



**Northumbria
University**
NEWCASTLE

In partnership with



#TakeOn Tomorrow

**Pathways and Pre-Masters
Programmes 2021/22**

northumbria.ac.uk/pathway

Committed to a Greener Planet

At Northumbria, we are passionate about saving our planet.

Northumbria has recently been named fourth most sustainable university in the UK in the 2019 People and Planet University League.

We are committed to optimising our contribution to the UN Sustainable Development Goals (SDG) through our research, teaching, campus and operations.

As part of our efforts to reduce our impact, we have produced this mini-guide in replacement of our larger prospectus. In doing so, we have saved paper when printing and distributing the guide.

All of the up-to-date information about coming to university is best found on our website.

CONTENTS

Why Northumbria?

Discover why you should study at Northumbria – a research-rich, business focussed, professional university with a global reputation for academic excellence.

Check out pages 4 – 11

Where You Belong

Learn more about life both at Northumbria and in the city of Newcastle. Become part of the #IAmNorthumbria family.

Check out pages 12 – 33

This is Your Time

Discover how to make the most of your time studying at Northumbria. Enhance your CV through placements and build connections for your future.

Check out pages 34 – 37

Support For You

At Northumbria we'll support you at every step of the journey. Whether it's helping you understand the application process, applying for that dream job, or just coping with the transition to university life.

Check out pages 38 – 51

It Starts Here

Whatever your passion or career ambitions, it's time to get into the details and find the perfect course for you. View the application journey, and find out how to get in touch.

Check out pages 52 – 82

#TakeOnTomorrow

At Northumbria University, we embrace tomorrow. We pursue new thinking, forge new partnerships, create and exchange new knowledge, and find new solutions.

Our inspirational academics, partners and students work together to tackle tomorrow's challenges head on. We're ready for the future whatever it may hold.

Confident and creative in everything we do, we offer leadership and direction in this fast-changing world. Those with courage will transform lives and make a remarkable impact on the world.

Tomorrow. How will you handle it? Join us today and we can tackle this exciting new world together.

OUR ACADEMICS ARE TAKING ON TOMORROW

Northumbria is leading debate and responding to today's challenges through ground-breaking research which is brought into the classroom.

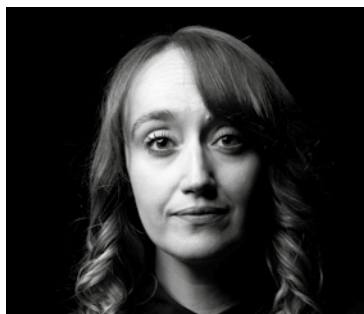
Northumbria ranked in the top 50 in the UK for research power (REF) 2014: marking the highest rise in any institution. Our academics explore some of the world's most urgent and complex problems and use their research to fight disease, increase life expectancy and protect our planet. They ask the questions that mean we can tackle tomorrow's challenges.



**Associate Professor
Eamon Scullion**

*Department of Mathematics,
Physics and Electrical Engineering*

Predicting solar flares that could damage the earth.



Dr Alana James

Northumbria School of Design

Creating a responsible future for fashion.



Professor Tanya Wyatt

Department of Social Sciences

Tackling the illegal wildlife trade to protect other species and the planet.



Professor Christopher Newman

Northumbria Law School

Bringing order and governance solutions to the space environment.



**Associate Professor
Longzhi Yang**

*Department of Computer
and Information Sciences*

Using AI to improve people's lives without negative side effects.



Professor Greta Defeyter

*Department of Social Work,
Education and Community
Wellbeing*

Leading on the fight against holiday hunger.

LEAD ON

We create confident leaders with the stamina, determination, talent and commitment to inspire and get results.

Fit for the 21st century and beyond, our students, staff and alumni do amazing things. Here are a handful of examples:



Karl Wharton MBE
Senior Lecturer in Sports Coaching

Recognised by the Queen, Karl has received an MBE for his leading work in gymnastics. Karl was Head Coach for the British National Gymnastics Team at six World Championships.



Sir Jonathan Ive
KBE, HonFREng, Hon DCL, RDI
Former Senior Design Officer – Apple

Sir Jonathan Ive is credited as being the designer of the MacBook Pro, iMac, MacBook Air, iPod, iPhone, iPad, Apple Watch and iOS 7. He is a Northumbria Design for Industry graduate (1989), and in 2012 he was knighted for his services to design and enterprise.

England Rugby Team

Northumbria graduate and team captain Owen Farrell, alongside students Anthony Watson and Mako Vunipola, led the England Rugby team to the 2019 World Cup Final in Japan against South Africa.



Professor Matt Baillie Smith
International Development

Working with the Swedish Red Cross, Matt is bringing to light the challenges faced by volunteering and developing ways to protect and support all volunteers.



Louise Trotter
Creative Director, Lacoste

Louise graduated from Fashion and Marketing (1991). Having held leadership roles at the likes of Gap, Tommy Hilfiger, Jigsaw, Calvin Klein and Joseph and more recently Creative Director at Lacoste.



TOP OF OUR GAME

Top 15 in the UK for the number of graduates* in highly skilled employment

(Graduate Outcomes 2017/18)

Top 50 in the UK for research power

Research Excellence Framework (REF 2014.) The national system for assessing the quality of research in all UK universities

2nd in the UK for enterprise

Based on the turnover of business start-ups (HEBCIS 2018/19)

Best UK student city

Student Hut 'Best for 2019' league table

Top-rated UK University

Times Higher Education Young Universities Rankings 2020

UK Top 30 University

The Guardian

Silver Teaching Excellence Award

Teaching Excellence Framework (TEF)

Top 40 in the UK for graduate earnings post graduation

Based on median graduate earnings. Graduate Outcomes (LEO) 2016/17

*UK full time graduates

WHERE YOU BELONG

You come to university to learn, but there's so much more to experience.

Newcastle is consistently ranked as one of the best cities in the UK for students. You're at the start of an incredible experience. New place, new people. With over 100,000 students across the North East, Newcastle is the perfect place to start your student journey.

Northumbria has modern facilities, extensive course choices and it's based in a cosmopolitan city with a vibrant student community. What more do you need?

Making the most at Northumbria means opening your mind, learning by doing, embracing the community, and shaping an adventure that is completely yours. You aren't just getting an education; you are building a foundation for lifelong success.

Whether you love sport or culture and creativity, want to make a difference or be part of a global community, this is where you belong.

Through societies, volunteering, team sport and our alumni society, this is your chance to challenge yourself, build your confidence, try new things and meet new people with different ideas and viewpoints.





At Northumbria we welcome talented, curious, confident and creative students and staff from all around the world.

We want you to embrace life at Northumbria, explore new opportunities, get involved and be part of our community of inclusive, like-minded people, who are making a difference.

Our culturally diverse environment will stimulate ideas, innovation and debate to enhance your learning and student experience. We're passionate about what we do and we are proud of our community.

By joining Northumbria you are joining a global family, we have alumni and staff from over 170 countries. Our alumni stay connected to Northumbria to offer future talent new opportunities. So even after you graduate, you'll always be a part of Northumbria.



Tyne Bridge

Newcastle is often voted one of the best and most affordable student cities in the UK and we're proud to call it our home.

Newcastle is the vibrant capital of North East England and one of the most exciting places in the UK.

The city blends the old and new beautifully, with rich historic landmarks and modern architecture.

Compact and easy to navigate, Newcastle offers a wealth of entertainment and activities. From galleries and museums to theatres and music venues; from restaurants and cafes to pubs and clubs, there is so much to do within walking distance of our city campus.



Quayside



City Centre

"As an international student, I was pleasantly surprised at how accessible oriental shops in Newcastle are! There's always something or somewhere to go in the city that suits everyone - whether you're into street photography or just looking for a good brew, you'll definitely find it here."

Jasmine Nanta | BA (Hons) Business with Marketing Management



Hadrian's Wall

The fun doesn't stop there. With even more to do just on our doorstep; from rugged countryside to fabulous beaches, historic market towns and intriguing attractions.

Newcastle's surrounding area of Northumberland is full of culture and places to explore. You can take a walk along the World Heritage site Hadrian's Wall, or head to Alnwick Castle which was made famous as 'Hogwarts' in the Harry Potter film franchise.



Bamburgh Castle



Whitley Bay

Six North East beaches have been granted the International Blue Flag status, making them amongst the best in the world. These include Tynemouth Longsands, where you can enjoy award-winning fish and chips, King Edward's Bay and Whitley Bay.

If you fancy something closer then you can head to Gateshead to view the Angel of the North, an iconic sculpture created by Anthony Gormley, and discover the powerful message behind its creation.

No matter what your interests, Newcastle and the North East have something for everyone.

MAP OF THE CITY

Take a look around and get to know the city of Newcastle.

Newcastle has its own international airport and national rail links, making it easy to explore the UK, Europe and the rest of the world.

TRAVEL BY RAIL

Edinburgh - 1h 30m

Manchester - 2h 30m

London - 3 hours

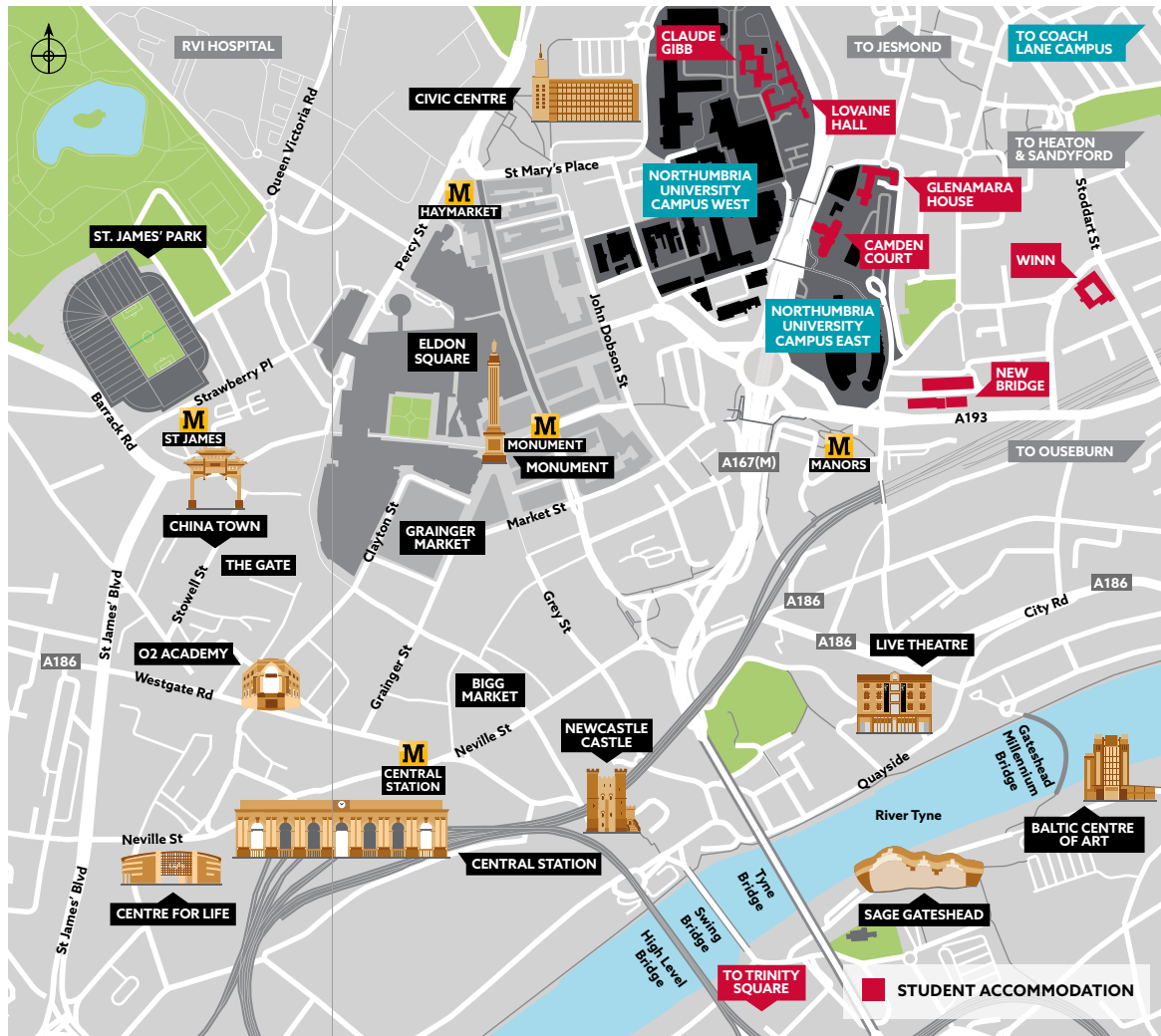
TRAVEL BY AIR

Dublin - 1h 10m

Amsterdam - 1h 20m

Paris - 1h 50m

Dubai - 7h 15m



OUR CAMPUS



CIS Building, City Campus

We are passionate about our campuses and have invested over £252 million since 2005 to provide new learning, working and social spaces to improve services and support for our students' welfare and education.



Coach Lane

City Campus

Our students study in a world-class campus that adds to an exceptional student experience.

We have recently completed Student Central and City Campus Library, a £7 million Computer and Information Sciences Building, new Architecture Studios in Sutherland Building, a 24/7 computer hub in Northumberland Building and the refurbishment of the University Gallery.

Our City Campus is in the heart of Newcastle city centre, so it's the perfect place to make the most of your time at university.

Coach Lane Campus

This campus is home to our healthcare and education courses. Our state-of-the-art Clinical Skills Centre is a purpose built facility that gives our students valuable experience of real life situations through a simulated environment.

Located just three miles from the city centre, Coach Lane is an extensive site with its own Students' Union, Library and IT suites.

Coach Lane can be easily reached from City Campus by a free bus service seven days a week.

"I loved living in student accommodation as I was able to meet new people. I lived in Glenamara and two years on I still live with the girls I lived with in first year."

Isobel Tallentire | BA (Hons) History



YOUR NEW HOME

Living in halls is a once in a lifetime experience. From meeting new people, to unwinding in your room. Where you live forms a large part of your student life.



Trinity Square



Glenamara House

We offer a wide range of options when choosing your accommodation including en suite rooms and catered accommodation. You can book your place as soon as you make Northumbria your firm choice. Much like choosing a seat in the cinema, you can pick your exact room from the building floorplans, giving you the opportunity to shape your experience from start to finish.

The whole process can be completed online in minutes:

- Enter your interests to help your flatmates learn more about you,
- Browse the live building availability and learn more about potential flatmates,
- Select your exact building, floor, flat and room and finalise the booking online within minutes.

All of our residences are within walking distance of the campus and are easily accessed through local transport links.

BE PART OF IT



It's not all work and no play. Far from it. You're in a city renowned for its friendliness, so why not get involved?



You'll never be short of things to do.

We have over 100 societies to join, from Surf and Snow to Dr Who and the DJ Society you're sure to meet your people here.

And if sport is more your game, Northumbria Sport is the perfect place to get fit, have fun or punch above your weight. Whether you want to take part in challenges, join clubs and leagues, or just get your mind and body on track, you'll be welcomed with open arms.



UP YOUR GAME

It's important to stay healthy, active and ready for an ever-changing environment. That's why our Sport Central building boasts state-of-the-art facilities including a six-lane 25m swimming pool, a running track, squash courts and a fully refurbished fitness centre.



We are committed to student wellbeing and ensuring students can access a wide variety of physical activities. In addition to the gym, student Fitness Members can access over 60 instructor led and virtual exercise classes each week. We also offer opportunities in over 35 different sports across our Sport Clubs, Social Sport programme and on-campus Student Football Leagues.

Our programmes are student led which means we have volunteer and internship positions available in roles including club committees, coaching, marketing, strength and conditioning, and much more.

Zambia Project



GET INVOLVED



Student Radio

If you want to make a difference or there's a cause close to your heart, there are lots of opportunities to become part of our community of volunteers.

At Northumbria, we roll up our sleeves. Students and staff alike get involved in a wide range of volunteer projects. Choose from things like sports, animals, teaching IT, arts or helping the elderly. You can get involved in the production of our magazine, TV and radio stations and get your name out there.

Volunteering helps you stand out. But don't just take our word for it. A UCAS survey stated that 70% of employers say they prefer candidates with a degree, plus experience. So you won't just be helping others. You'll be helping yourself.



Gardening Project



Our Students' Union makes a positive impact on the lives of all our students.

At Northumbria University, the Students' Union (NSU) is the centre of student life on our campus, with outstanding facilities made up of bars, entertainment venues, coffee shops, workspaces, chill out zones and meeting rooms.

The NSU is represented at City, Coach Lane, London and Amsterdam Campuses. It is run by a team of students called Sabbatical Officers who have been elected by students to represent you on all aspects of your university experience.



The Greenhouse Café

Here's a taster of what you can do at NSU:

- Enjoy great value food & drink at their on-campus bar, Habita, or The Greenhouse café,
- Find student housing through their in-house letting agency, NU:LETS.
- Join one of over 100 societies or get involved with volunteering,
- Attend numerous gigs each year – previous acts have included Editors and Frank Turner,
- Get discounted Starbucks,

 @NorthumbriaSU

 /mysnu

 NSU/TV

 @Northumbriastudentsunion

THIS IS YOUR TIME

Make it count.

Join a talented, global learning community filled with ambitious, inquisitive people – just like you.

Northumbria is the place to study courses shaped by world-leading research, and created in consultation with students, employers and professionals, statutory and regulatory bodies. Here, you'll learn to question, analyse, challenge, innovate, and make an impact.

"This is your opportunity to develop personally and professionally, transforming who you are, what you do and how you do it, in the best research-rich learning environment."

Professor Peter Francis | Deputy Vice-Chancellor

We play to your strengths.

At Northumbria, everything we do is about you. We're connected, so you'll get the chance to work with global companies, expand your horizons, stretch your knowledge, and build your CV.

Our inspirational academics will equip you with everything you need to fulfil your potential – professionally and personally. Your learning experience will be tailored to ensure you're ready for life beyond graduation – for a future yet to be explored.





RELEVANT & RECOGNISED

Northumbria has a long and successful history of professional accreditation for its courses. We are proud to provide our students with opportunities to gain the best education possible.

Studying a course with professional accreditation makes you more employable and will help you secure your dream job after graduation.

Over 400 of our courses are accredited by professional bodies, who periodically visit Northumbria to ensure our courses meet professional standards.

Our academic staff hold the same professional registrations and accreditations.





SUPPORT FOR YOU



Being a student can be one of the best experiences of your life, but we understand that sometimes it can also be a challenge. Students and their wellbeing are at the forefront of everything we do here at Northumbria.

Our Student Life and Wellbeing team are dedicated to providing quality support for a variety of needs ranging from mental health support to financial advice and guidance. Their dedication has been celebrated through achieving a Customer Service Excellence Award, and being awarded 'Outstanding

Student Services Team' in the Times Higher Education Leadership and Management Awards 2015.

Over half of all Northumbria students use our services in their academic life. You will even be able to access our Student Support teams before you're enrolled in the University.

"University is a huge step and the tutors and support teams have helped me adjust to the new environment of life at university. They make you feel comfortable to go and ask them anything."

Patience Moyo | BSc (Hons) Quantity Surveying

STUDENT CENTRAL



"Student Central is the perfect hub for students to get all the information they need in one place as well as being a great place to access the library and to study"

Emmanuel Kabengele |
Northumbria University
Students' Union President

Student Central can be found at our City Campus Library, City Campus East and Coach Lane Library, providing a focal point for students in the heart of our Campus.

Here you will find the Ask4Help team, the first point of contact for all student support enquiries. Students can contact the team in person, by phone or via their portal to raise queries and seek support or guidance on a range of topics.

At City Campus, the main Student Central is located within the University Library in a purpose-designed communal space. This includes our Student Skills Centre, where you can access a wide variety of group support, presentations and training sessions. Also, our state of the art, 24/7 Digital Commons is adjacent to Student Central.

Equipped with private consultation rooms, counselling services and experts in a wide range of fields, Student Central can provide support on:

- Accommodation,
- Applying for jobs,
- Assessments,
- Change of student status,
- Choosing a career,
- Counselling,
- Course information,
- Disability,
- Learning and research skills,
- Money and finance,
- Placements,
- On-course support,
- Using the Library,
- Visas and welfare.



"The library is like my second home. There are different floors for the type of study you are doing. I usually go with my course mates and like to discuss our ideas, so we work in the group study area."

Mark Robertson | MSc Health Psychology

Northumbria boasts one of the best academic libraries in the UK. We hold the Customer Service Excellence accreditation, with a collection of just under half a million print books, over 936,000 electronic books and over 82,000 electronic journals, to help support students during their degree.

Whether you're looking for a quiet place to work or a more social area to collaborate, there are over 2,300 study spaces in our City Campus Library so we're confident you'll find the ideal area for you.

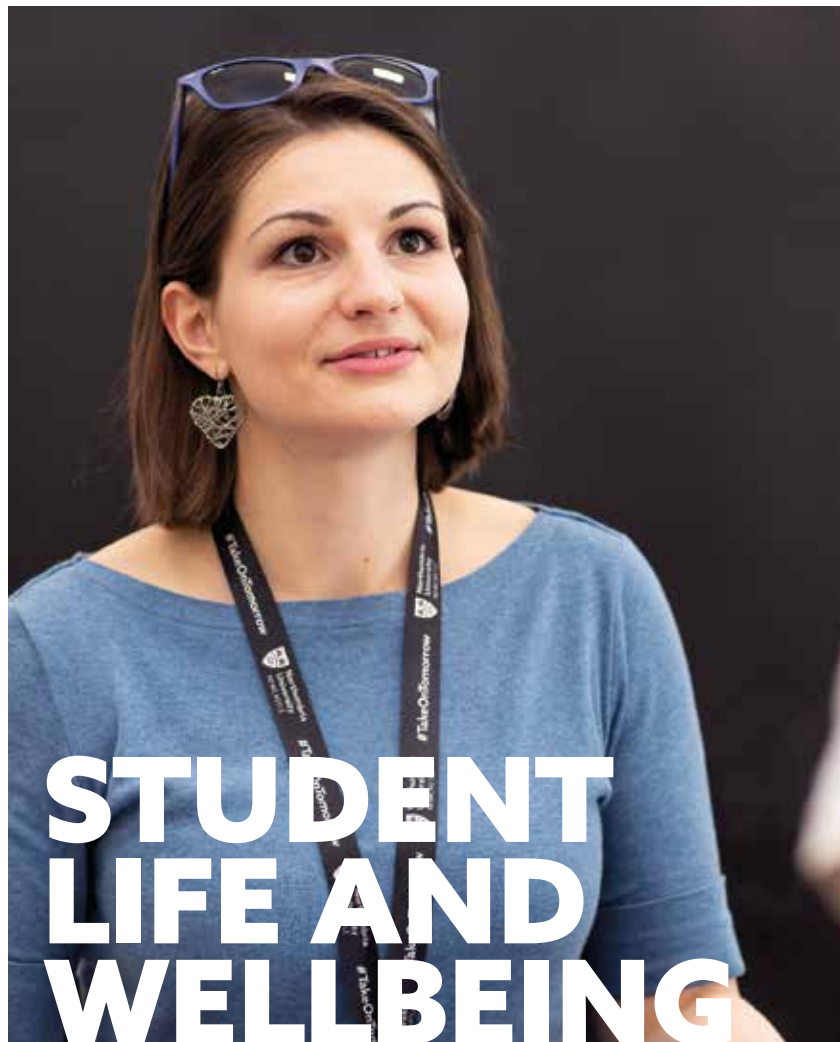
Our City Campus Library is open 24/7 and staffed by our Ask4Help team who are always on hand to help with your questions and queries. You can also take advantage of our academic support sessions to help you improve your academic writing, research and presentation skills.

The Law Practice Library, based in the Northumbria Law School,

is home to a reference collection of law resources, including textbooks, law reports and journals. The collection primarily supports the Legal Practice Course (LPC) and the Bar Course.

The University Library Digital Commons is located on the ground floor of Northumberland Building. It provides over 160 learning spaces, including spaces with PCs/Macs and collaborative tables for group work.

Coach Lane Library provides learning spaces over three floors and offers silent, quiet and collaborative spaces to enable you to find your perfect learning space.



"Receiving support from Student Life and Wellbeing improved my self-esteem and my approach towards my studies. It is one of the most valuable things I've done throughout my time at university."

Anonymous | Faculty of Arts, Design and Social Sciences

Our Student Life and Wellbeing service is always on hand to support you throughout your student journey.

Before you apply, our specialist advisers are here to explain your funding options, including information on scholarships, loans and grants. They can also advise you on how to apply for extra support, such as childcare.

We have a dedicated Inclusion team providing tailored support for under-represented student groups such as care leavers.

If you have a disability, we can explain how you can be assessed for support, so that any help you need can be put in place as early as possible. This support will continue throughout your studies and we can provide you with tailored advice on any disability or specific learning difficulty, such as dyslexia.

If you're an international student, we offer immigration and visa advice together with information on working in the UK.

Those flying into Newcastle International Airport can register for our free Meet and Greet service, which means someone will meet you and take you to your accommodation when you arrive.

Our services include:

- Financial support,
- International student support,
- Disability and dyslexia support,
- Counselling and mental health support,
- Welfare and health support,
- Inclusion support,
- Chaplaincy and faith advice.



Higher Education is an important investment in your future. At Northumbria we offer a range of support packages to ease the financial commitment of studying at university, allowing you to focus more on your studies.

Tuition Fees

All of our tuition fees can be found on our website. You can spread the cost of the tuition over the year through our payment plans*.

You can find payment plan information here: pathway.northumbria.ac.uk/dates-and-fees

Support Packages

There are a range of scholarships, bursaries and financial aid available depending on your circumstances. Alumni can also receive a 20% discount on their annual tuition

fees for a postgraduate course. For further information on what is available and how to apply please visit the website.

Managing Your Money

Learning to manage your money whilst studying is an integral part of university life. Graduate Futures, our careers and employment service, can support you in finding part-time work, whilst our Student Life and Wellbeing teams can provide advice and guidance on handling your finances.

*Not applicable to Graduate Certificate in Business



We strive to be the best, but don't just take our word for it. Our rankings show that we deliver on our promises.

**Ranked 6th in the UK
for Physiotherapy**

Times Good University Guide 2021

**Ranked 16th in the UK
for Communication and
Media Studies**

Times Good University Guide 2021

**Ranked 13th in the UK
for Architecture**

Guardian University Guide 2021

**Ranked 9th in the UK for
Building and Town and
Country Planning**

Guardian University Guide 2021

**Ranked 13th in the UK for
Design and Crafts**

Guardian University Guide 2021

**Ranked 8th in the UK for
Electronic and Electrical
Engineering**

Guardian University Guide 2021

**Ranked 6th in the UK
for Health Professions**

Guardian University Guide 2021

**Ranked 16th in the UK
for Journalism, Publishing
and Public Relations**

Guardian University Guide 2021

**Ranked 20th in the UK
for Law**

Guardian University Guide 2021

**Ranked 2nd in the UK
for Librarianship and
Information Management**

Complete University Guide 2021

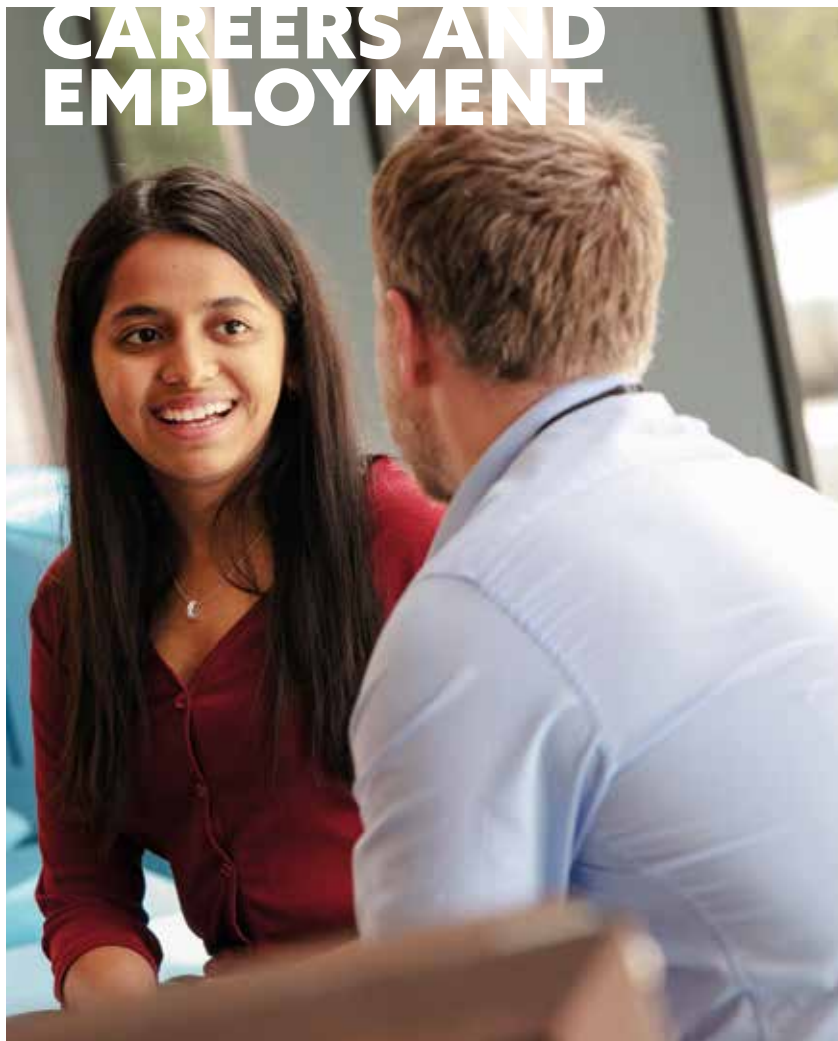
**Ranked 11th in the UK
for Nursing**

Complete University Guide 2021

**Ranked 11th in the UK
for Occupational Therapy**

Complete University Guide 2021

CAREERS AND EMPLOYMENT



Throughout your time at Northumbria, our Graduate Futures team will work with you to help you get that job, start your own business, or apply for further study.

Our services include:

- Careers guidance,
- Advice on CVs, applications and portfolios,
- Better use of LinkedIn,
- Networking through career fairs and other opportunities to meet recruiters,
- Free start-up support,
- Enterprise skills workshops and events.

All of this will maximise your opportunities when you graduate.

Get ahead with tools for success

Use the interactive resources in Careers Online, your employability hub, to help you explore your career options, research employers and write effective applications.

Find job opportunities

Employers targeting Northumbria students and graduates advertise vacancies on JobsOnline. You'll get exclusive access to all of these, including graduate jobs, student and graduate internships, part-time work, volunteering and work experience opportunities.

PATHWAY PROGRAMMES

Read on to find out why you should come to Northumbria University to study the subject of your choice, what makes our campus so special and what courses we have to offer.

Visit our website and use our course search to find out all you need to know about your course – from modules, country specific entry requirements and upcoming dates and deadlines.

Once you know which course you're interested in, how do you know what you need to achieve to get here? On the next page we have highlighted the entry points we would typically ask for. These requirements are provided as a guide to our standard offer levels and we may take into account alternative equivalent qualifications.

At Northumbria, we have a flexible and inclusive approach to assessing potential candidates. We know there are many different qualifications, skills and experiences which can all contribute to your application. We make an offer based on the individual and our published entry requirements are typical of our standard offer, so just think of them as a guideline.

Feel free to contact us about any queries that you may have. A member of our dedicated recruitment team will be happy to help.

Recruitment line

T: (+44) 191 640 3897

W: pathway.northumbria.ac.uk/enquire



Pathway Programmes

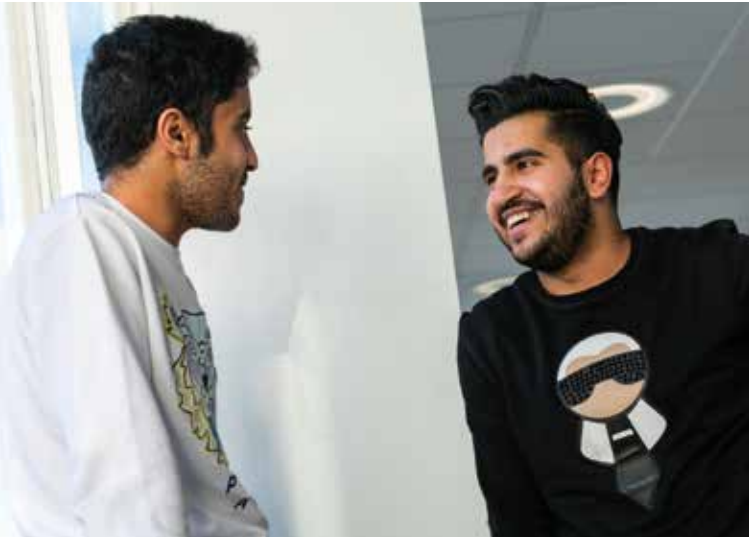
Courses	Entry Requirements	English Language Requirements (from a UKVI Approved Centre)
English for University Studies	You must be 16 or older to study this programme.	3 months: IELTS 5.5, with no single element below 4.0 6 months: IELTS 5.0, with no single element below 4.0
International Foundation Programme	GCSE/IGCSE – 5 passes at A-C.	6 months: IELTS 5.5, with no single element below 5.0 9 months: IELTS 5.0, with no single element below 4.0 12 months: IELTS 4.5, with no single element below 4.0
Art, Design and Media		
Applied Science		
Business and Law		
Computing		
Engineering		
Humanities and Social Sciences		
International Year One – Business	Good High School grades or equivalent.	9 months: IELTS 5.5, with no single element below 5.5 12 months: IELTS 5.5, with no single element below 5.0
Graduate Certificate in Business	Third class, pass or ordinary degree from a UK university, or equivalent.	IELTS 6.5, with no single element below 5.5

Find out more:

For information on course content, start dates and fees make sure you visit northumbria.ac.uk/pathway



English for University Studies



Level	English Language	
Start dates	July, October and January	July and October
Duration	3 months	6 months
Tuition fee	£4,000	£8,000
Mode of study	Full-time – seminars, practical activities, directed learning and independent learning	
Class hours per week	20 hours	
Average class size	16	
Assessment	In-class tests	

You will learn English but perhaps not as you may have learnt it before.

Designed specifically for international students, English for University Studies (EUS) offers you an opportunity to explore what it is like to study at university. This programme is applicable for those of you who are looking for a more gradual introduction into studying at University, without committing to long-term study.



Develop English in an academic and social context



Each term typically improves language skills by 0.5



Taught by TEFLQ qualified English tutors



Experience student-life without committing to long-term study



Learn along like-minded international students, from all across the world, who are progressing onto further study at Northumbria University

Further study

This is a great opportunity to experience what it's like to be a student at Northumbria University and study alongside other international students who are progressing into the university. Whilst this is a standalone course, you are encouraged to explore the courses on offer at Northumbria.

International Foundation Programme



Level	Foundation - NQF Level 3		
Start dates	March	October and January	July and October
Duration	6 months	9 months	12 months
Tuition fee	£10,000	£15,500	£19,500
Mode of study	Full-time – seminars, lectures, workshops, labs and tutorials.		
Class hours per week	22 – 24 hours		
Average class size	16 – 20		
Assessment	Coursework – including portfolios, essays, presentations and in-class tests (Applied Science includes exams)		

The International Foundation Programme offers an excellent opportunity to fully prepare for your undergraduate studies and adjust to life in the UK.

You will develop English language skills relevant to your subject, studying alongside other international students and guided by academics, tutors and support staff with experience in supporting international students in this important transition.



Prepare for UK undergraduate studies



Build your intercultural skills and integrate with UK student life



Various start dates depending on English level



6 subject specific pathways, guaranteeing you entry to one of over 90 undergraduate degrees at Northumbria University



Study in a fully embedded Pathway College where you're part of the university campus from day 1

"So far my experience has been absolutely perfect. I have really enjoyed the IT and intercultural communication modules of the course. The teaching is very engaging, in the reading class the teachers help me learn about the language which I find really useful. I am dreaming of working in the Ministry of Defence. I feel my course could help me achieve this dream."

Farhad Althuaini - Saudi Arabia | *International Foundation Programme*

International Foundation Programme



Example Modules	
Stage 1 IELTS 5.0 (study for 1 term) IELTS 4.5 (study for 2 terms)	English for University Studies (0 credits)
Stage 2 You will then progress onto the following modules	<ul style="list-style-type: none"> • English for Foundation • Academic Practice • Project
Stage 3 Pathway specific modules <i>All single modules are 20 credits unless otherwise stated.</i>	Applied Science <ul style="list-style-type: none"> • Introduction to Biology • Introduction to Biomedical Sciences • Introduction to Chemistry
	Art, Design and Media <ul style="list-style-type: none"> • Art, Design and Media Specialism Development • Digital Design Skills and Practice • Introduction to Theory and Practices in Art, Design and Media
	Business and Law <ul style="list-style-type: none"> • Contemporary Business Issues • Entrepreneurship and Innovation in Business • Ethical Practices in Action
	Computing <ul style="list-style-type: none"> • Digital Design Skills and Practice • Introduction to Computing and Coding • Information Systems Design and Performance
	Engineering <ul style="list-style-type: none"> • Applied Algebra and Trigonometry • Engineering Skills • Introduction to Engineering Design and Problem Solving
	Humanities and Social Sciences <ul style="list-style-type: none"> • Introduction to Cross Cultural Communication • Introduction to Humanities and Social Sciences • Ethical Practices in Action

Further study

Upon successful completion you can progress onto one of over 90 undergraduate degrees at Northumbria University. For more information on progression, see page 68.

International Year One - Business



Level	NQF Level 4 – 1st year of an undergraduate degree	
Start dates	October and January	July and October
Duration	9 months	12 months
Tuition fee	£15,500	£19,500
Mode of study	Full-time – seminars, lectures, tutorials and workshops.	
Class hours per week	24 hours	
Maximum class size	20	
Assessment	Coursework and exams – including portfolios, essays, reports, reflection, exams, poster presentation and group work	

The International Year One – Business is a degree preparation programme for international students who want to study on one of the many Northumbria University undergraduate business degrees, but need additional support to gain direct entry into year two.

The programme is the equivalent of the first year of an undergraduate degree and on successful completion of the International Year One, you will join directly into year two of your chosen programme of study.



Progress to Northumbria University's double AACSB-accredited Business School



Equivalent to year one of an undergraduate degree



More support and teaching hours than a standard 1st year undergraduate degree



Build your intercultural skills and integrate with UK student life



Study a specialist module applicable to your target degree



Complete your degree in 3 years (4 years with a work placement year)

"There are a wide range of business disciplines taught in this course which allows you to explore each field and learn more about what career you want to continue with."

Ruzumukhammad Marufov - Uzbekistan | International Year One (Business)

International Year One - Business

Example Modules

Core modules:

All modules are 20 credits unless otherwise stated.

- English for University Studies - (12-month only) (0 credits)
- Managing People in an Organisational Context
- Business in a Global Context
- Financial Information for Decision Making
- Business Investigation for Decision Making
- Academic Business Skills

Specialist modules:

You will study one of the following depending on your target degree:

- Fundamentals of Markets and Customers
- Fundamentals of Supply Chain Management and Marketing
- Fundamentals of Work Psychology

Further study

Upon successful completion you can progress onto the second year of a range of business undergraduate degrees at Northumbria University. For more information on progression, see page 68.



Graduate Certificate in Business*



Level	Pre-Masters – NQF Level 6
Start dates	September
Duration	3 months
Tuition fee	£6,750
Mode of study	Full-time – seminars, lectures and group project work
Class hours per week	10 hours
Average class size	12 – 15
Assessment	A mix of assignments, exams and a presentation

*Please note: this programme is undergoing revalidation late 2020. Changes are anticipated to course content and modules. Please refer to the online course page for the most up-to-date information.

If you need extra support to meet the entry criteria to study one of our Masters programmes, the Graduate Certificate in Business is designed to help you gain the skills, knowledge and confidence needed to successfully transition to postgraduate-level study.



Develop the skills, knowledge and confidence needed to transition to Masters-level study



Build your intercultural skills and integrate with UK student life



Opportunity to progress onto Northumbria University's double AACSB-accredited Business School



Start your Masters in January



Examine case studies and apply theory to real-world examples



Study in highly interactive lectures and seminars

Example Modules

- Developing Academic Skills for Business and Management (20 credits)
- Business and Management in Context (40 credits)

Further study

Upon successful completion of the Graduate Certificate with a 50% pass mark, you can progress on to one of our suite of Masters programmes at Northumbria University. For more information on progression, please visit the course page online.



IT STARTS HERE



Due to the variety of our pathway programmes, you can progress onto almost all of the undergraduate degrees offered here at Northumbria University.

On the following pages you will see the undergraduate courses that are available to you, along with the pathway programme that feeds into them. When you find your target undergraduate degree, you will also see which of our pathway programmes you will need to study, in order to progress onto it.

International Foundation Programmes

To progress onto the **first year** of your chosen undergraduate degree you must achieve at least 40% on your programme.

International Year One

To progress onto the **second year** of your chosen undergraduate degree you must achieve at least 40% on your programme.

UNDERGRADUATE COURSES 2021/22

APPLIED SCIENCES

Biochemistry <i>BSc (Hons)</i>	■
Biology (with optional pathways in Biotechnology and Human Neurobiology) <i>BSc (Hons)</i>	■
Biomedical Science <i>BSc (Hons)</i>	■
Chemistry <i>BSc (Hons)</i>	■
Criminology and Forensic Science <i>BSc (Hons)</i>	■
Food Science and Nutrition (with optional pathway in Human Nutrition) <i>BSc (Hons)</i>	■
Forensic Science <i>BSc (Hons)</i>	■

ARCHITECTURE AND BUILT ENVIRONMENT

Architecture <i>BA (Hons)</i>	●
Building Surveying <i>BSc (Hons)</i>	◆
Interior Architecture <i>BA (Hons)</i>	●
Quantity Surveying <i>BSc (Hons)</i>	◆
Real Estate <i>BSc (Hons)</i>	◆

ART

Animation <i>BA (Hons)</i>	●
Film and Television Studies <i>BA (Hons)</i>	◆
Fine Art <i>BA (Hons)</i>	●
Journalism and English Literature <i>BA (Hons)</i>	◆
Mass Communication <i>BA (Hons)</i>	◆
Mass Communication with Advertising <i>BA (Hons)</i>	◆
Mass Communication with Business <i>BA (Hons)</i>	◆
Mass Communication with Public Relations <i>BA (Hons)</i>	◆
Media and Journalism <i>BA (Hons)</i>	◆
Television <i>BA (Hons)</i>	●

All course information is correct at the time of printing.
To ensure you have the most up-to-date information please visit our website.



BUSINESS

Accounting <i>BSc (Hons)*</i>	▲
Business Management <i>BA (Hons)</i>	★▲
Business and Human Resource Management <i>BA (Hons)</i>	★▲
Business and Marketing Management <i>BA (Hons)</i>	▲
Entrepreneurship <i>BA (Hons)</i>	▲
International Business Management <i>BSc (Hons)</i>	▲
Marketing Management <i>BA (Hons)</i>	▲
Tourism and Events Management <i>BA (Hons)</i>	▲

COMPUTER AND INFORMATION SCIENCES

Computer and Digital Forensics <i>BSc (Hons)</i>	◆
Computer Networks and Cyber Security <i>BSc (Hons)</i>	◆
Computer Science <i>BSc (Hons)</i>	◆
Computer Science with Artificial Intelligence <i>BSc (Hons)</i>	◆
Computer Science with Games Development <i>BSc (Hons)</i>	◆
Computer Science with Web Development <i>BSc (Hons)</i>	◆
Information Technology Management for Business <i>BSc (Hons)</i>	◆

NORTHUMBRIA SCHOOL OF DESIGN

3D Design <i>BA (Hons)</i>	●
Design for Industry <i>BA (Hons)</i>	●
Fashion <i>BA (Hons)</i>	●
Fashion Communication <i>BA (Hons)</i>	●
Fashion Design and Marketing <i>BA (Hons)</i>	●
Graphic Design <i>BA (Hons)</i>	●
Interaction Media Design <i>BA (Hons)</i>	●
Interior Design <i>BA (Hons)</i>	●

GEOGRAPHY AND ENVIRONMENTAL SCIENCES

Environmental Science <i>BSc (Hons)</i>	◆
Geography <i>BA (Hons)</i>	◆
Geography <i>BSc (Hons)</i>	◆
Human Geography <i>MGeog (Hons)</i>	◆
Physical Geography <i>BSc (Hons)</i>	◆

*Additional entry requirements apply.

■ Applied Science ● Art, Design and Media ▲ Business and Law ◆ Computing

● Engineering ◆ Humanities and Social Sciences ★ International Year One

Undergraduate courses 2021/22

ENGLISH, HISTORY, AMERICAN STUDIES AND MUSIC

American Studies BA (Hons)	◆
English Language and Literature BA (Hons)	◆
English Language Studies BA (Hons)	◆
English Literature BA (Hons)	◆
English Literature and American Studies BA (Hons)	◆
English Literature and Creative Writing BA (Hons)	◆
English Literature and History BA (Hons)	◆
History BA (Hons)	◆
History and American Studies BA (Hons)	◆
History and Politics BA (Hons)	◆

NORTHUMBRIA LAW SCHOOL

Law LLB LLB (Hons)	▲
--------------------	---

MECHANICAL AND CONSTRUCTION ENGINEERING

Automotive Engineering BEng (Hons)	◐
Civil Engineering BEng (Hons)	◐
Construction Engineering Management BSc (Hons)	◐
Mechanical and Automotive Engineering BEng (Hons)	◐
Mechanical Engineering BEng (Hons)	◐

PHYSICS AND ELECTRICAL ENGINEERING

Electrical and Electronic Engineering BEng (Hons)	◐
Physics BSc (Hons)	■
Physics with Astrophysics BSc (Hons)	■

PSYCHOLOGY

Psychology (with optional pathways in Business, Clinical, Experimental, Forensic or Health Psychology) BSc (Hons)	◆
Psychology with Criminology BSc (Hons)	◆

All course information is correct at the time of printing.
To ensure you have the most up-to-date information please visit our website.

SOCIAL SCIENCES

Criminology BSc (Hons)	◆
Criminology and Sociology BSc (Hons)	◆
International Relations and Politics BA (Hons)	◆
Sociology BSc (Hons)	◆

SOCIAL WORK AND COMMUNITY WELLBEING

Childhood and Early Years Studies BA (Hons)	◆
Guidance and Counselling BA (Hons)	◆

SPORTS EXERCISE AND REHABILITATION

Applied Sport and Exercise Science BSc (Hons)	■
Sport Coaching BSc (Hons)	◆
Sport, Exercise and Nutrition BSc (Hons)	■
Sport Management BSc (Hons)	◆

■ Applied Science ● Art, Design and Media ▲ Business and Law ● Computing

◐ Engineering ◆ Humanities and Social Sciences ★ International Year One



"I enjoy the creativity of the programme and the balance of academic and informal teaching methods. The teaching and support helps me to find alternative methods to learn and approach assignments, which gives me confidence that I will do well in my studies at undergraduate level."

Oluwanisola Esele Oyefeko – Nigeria | International Foundation Programme – Business



"I am currently studying the International Foundation Programme to allow me to progress on to an undergraduate degree in Graphic Design. The International Foundation Programme has helped me to develop my English language skills and my ability to communicate and work in groups. I have really enjoyed meeting people from a wide range of cultures throughout the programme."

Aziza Zahran Saleh Al Ismaili – Oman | International Foundation Programme – Art, Design and Media

INTERNATIONAL APPLICANTS

This is a quick guide on how to apply for a course at Northumbria. For more details visit our website: pathway.northumbria.ac.uk/how-to-apply

Remember:

Research universities and attend our recruitment visits in your country. For more details visit northumbria.ac.uk/nuworldwide

HOW DO YOU APPLY?

Apply directly on our website northumbria.ac.uk/pathway through an agent or with our Regional Office in your country

Your offer will be emailed to you or your educational representative

Send your application with supporting documents, such as: passport details, references and visa history.

Check your applicant portal regularly for important information

ACCEPT YOUR OFFER

GET YOUR RESULTS
Met your conditions?

Receive information on how to book accommodation

CONGRATULATIONS YOU'RE COMING TO NORTHUMBRIA!

If required, receive your CAS

If required, pay your deposit

Book your free Meet and Greet service to take you direct to your accommodation from the airport

Complete self-registration online before you arrive

WELCOME TO NORTHUMBRIA!

ATTEND ENROLMENT, INDUCTION AND WELCOME WEEK

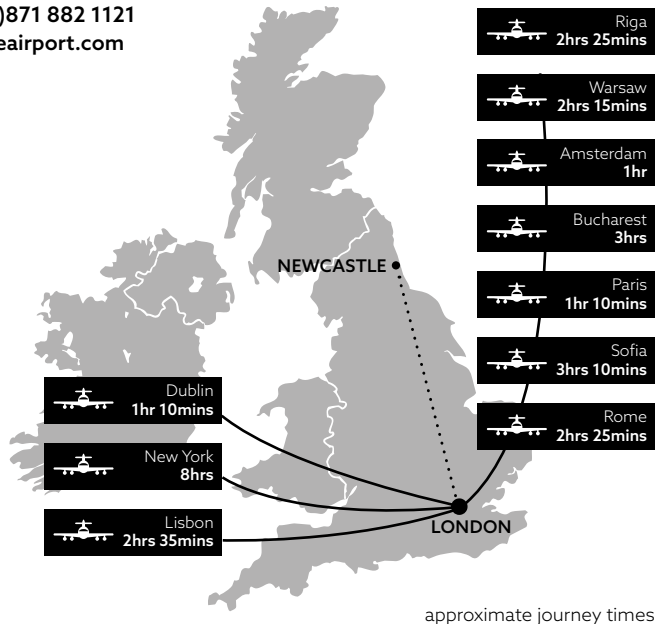
LOCATION

Whether travelling by air, sea, rail or road, Northumbria University is easily accessible.

Air

Newcastle has its own international airport operating both domestic and international flights to cities including London, Birmingham, Bristol, Cardiff, Aberdeen, Dublin, Belfast, Southampton, Amsterdam, Paris, Barcelona, Prague, Dubai and Copenhagen. London airports service many other parts of the world and from there it is a short 3 hr rail journey to Newcastle.

Newcastle International Airport
T: +44 (0)871 882 1121
newcastleairport.com



Sea

Car ferry and passenger services operate to Tyneside from Holland. The North Shields International Ferry Terminal at Royal Quays (Tyne Commission Quay) is seven miles east of Newcastle. Bus services run from the terminal building to the city centre.

DFDS Seaways
T: +44 (0)871 522 9955
dfdsseaways.co.uk

Rail

Rail services operate from many cities. Approximate travelling times are:

Birmingham	3 hours
Edinburgh:	1.5 hours
Glasgow	3 hours
London	3 hours
Manchester	2.5 hours
Sheffield	2 hours

Rail Enquiries
T: +44 (0)8457 484 950
nationalrail.co.uk

Road

The region is particularly well served by the A1(M) from London in the south and Edinburgh in the north, the A19 from York, the A69 from Carlisle and the M6 from the south west and west.

Coach

National Express operates services connecting Newcastle to the rest of the UK. Approximate travelling times are:

Birmingham	5 hours
Edinburgh	3 hours
Glasgow	4 hours
London	6 hours
Manchester	4 hours
Sheffield	3 hours

National Express
T: +44 (0)871 781 8178
nationalexpress.com

CONTACT US

There are a range of ways you can get in touch. Please contact the relevant team or message us via our other channels.

 Live chat across our website

 @NorthumbriaUni

 /NorthumbriaUni

 NorthumbriaUni

 @NorthumbriaUni



Enquiries: pathway.northumbria.ac.uk/enquire

Course Information: pathway.northumbria.ac.uk/courses

Accommodation: pathway.northumbria.ac.uk/accommodation

Campus Tour: pathway.northumbria.ac.uk/tour

International Students Information: pathway.northumbria.ac.uk/int

OVERSEAS OFFICES

Thailand - Bangkok

Also responsible for Indonesia, Cambodia, Myanmar, Pakistan and Vietnam.

Northumbria University
Thailand Office, 283/46 Unit 1001-1,
10th Floor, Home Place Building,
Sukhumvit 55 (Thonglor 13),
Bangkok 10110, Thailand

T: (+66) 2044 6430
E: thaioffice@northumbria.ac.uk

P. R. China - Beijing

Northumbria University
China Office, Room 1610, Block B,
Winterless Center,
Jia 1, Xi Da Wang Road
Chaoyang District,
Beijing 100026, P.R.China

T: (+86) 10 6538 8135
F: (+86) 10 6538 8136
E: teresa.zhao@northumbria.ac.uk

Malaysia

Also responsible for Brunei, Hong Kong, the Philippines, Singapore, Taiwan and South Korea.

Northumbria University
Malaysia Office, A-8-3, 8th Floor,
Northpoint Building @ Midvalley City,
1 Jalan Syed Putra Utara,
59200 Kuala Lumpur, Malaysia

T: (+60) 3 2287 8080
F: (+60) 3 2287 8282
E: malaysiaoffice@northumbria.ac.uk

Nigeria

Northumbria University
Pathway College, 5 Mekong,
Wuse, Abuja, Nigeria

T: (+234) 9065 235553
E: Oghale.onyeagoro@northumbria.ac.uk

India

Also responsible for Bangladesh and Nepal.

308, Plot No-2, Sector-5,
Aggarwal Tower, MLU Plaza,
Dwarka, New Delhi – 110075, India

T: (+ 91) 999 959 8771
E: vikas.sharma@northumbria.ac.uk

Columbia

M: (+44) 7367 193 956
T: (+57) 312 361 9711
E: juliana.cortes@northumbria.ac.uk

All programmes included in this prospectus are delivered as part of a partnership between Northumbria University and QA Higher Education – a UK higher education provider. All pathway programmes detailed are validated by the University and taught by QA Higher Education and University staff.

Northumbria University and QA Higher Education are committed to being equal opportunities education providers and will therefore make reasonable adjustments for disabled applicants and students.

The information given in this publication is accurate at the time of going to print in April 2021 and the University and QA Higher Education will use all reasonable efforts to deliver the programmes as described. The University and QA Higher Education reserve the right to withdraw or change the programmes or programme combinations included in this prospectus. These changes will only be made as a result of UK legal compliance, minimum student number requirements or for course validation reasons and applicants will be contacted by the University or QA Higher Education at the earliest opportunity in the instance of these changes occurring. Please check the website for up-to-date information on our programmes.

V1 04/21



Northumbria
University
NEWCASTLE

In partnership with



northumbria.ac.uk/pathway