



**Northumbria
University**
NEWCASTLE

Newcastle • London • Amsterdam

#TakeOn Tomorrow

**London Campus
Prospectus 2021/22**

northumbria.ac.uk/london

Committed to a Greener Planet

At Northumbria, we are passionate about saving our planet.

Northumbria has recently been named fourth most sustainable university in the UK in the 2019 People and Planet University League.

We are committed to optimising our contribution to the UN Sustainable Development Goals (SDG) through our research, teaching, campus and operations.

As part of our efforts to reduce our impact, we have produced this mini-guide in replacement of our larger prospectus. In doing so, we have saved almost 5 million pages of paper and over 10 tons in weight when printing and distributing the guide.

All necessary information remains and any additional up-to-date information can be found on our website.

CONTENTS

Why Northumbria?

Discover why you should study at Northumbria – a research-rich, business focussed, professional university with a global reputation for academic excellence.

Check out pages 4 – 11

Where You Belong

Learn more about life both at Northumbria and in the city of London. Become part of the #IAmNorthumbria family.

Check out pages 12 – 21

This is Your Time

Discover how to make the most of your time studying at Northumbria. Enhance your CV and build connections for your future.

Check out pages 22 – 27

Support For You

At Northumbria we'll support you at every step of the journey. Whether it's helping you understand the application process, applying for that dream job, or just coping with the transition to university life.

Check out pages 28 – 33

It Starts Here

Whatever your passion or career ambitions, it's time to get into the details and find the perfect course for you. Read our admissions and selection process, and find out how to get in touch.

Check out pages 34 – 99

#TakeOnTomorrow

At Northumbria University we embrace tomorrow. We pursue new thinking, forge new partnerships, create and exchange new knowledge, and find new solutions.

Our inspirational academics, partners and students work together to tackle tomorrow's challenges head on. We're ready for the future whatever it may hold.

Confident and creative in everything we do, we offer leadership and direction in this fast-changing world. Those with courage will transform lives and make a remarkable impact on the world.

Tomorrow. How will you handle it? Join us today and we can tackle this exciting new world together.

OUR ACADEMICS ARE TAKING ON TOMORROW

Northumbria is leading debate and responding to today's challenges through ground-breaking research which is brought into the classroom.

Northumbria ranked in the top 50 in the UK for research power (REF) 2014: marking the highest rise in any institution. Our academics explore some of the world's most urgent and complex problems and use their research to fight disease, increase life expectancy and protect our planet. They ask the questions that mean we can tackle tomorrow's challenges.



Associate Professor Eamon Scullion
Department of Mathematics, Physics and Electrical Engineering
Predicting solar flares that could damage the earth.



Dr Alana James
Northumbria School of Design
Creating a responsible future for fashion.



Professor Tanya Wyatt
Department of Social Sciences
Tackling the illegal wildlife trade to protect other species and the planet.



Professor Christopher Newman
Northumbria Law School
Bringing order and governance solutions to the space environment.



Associate Professor Longzhi Yang
Department of Computer and Information Sciences
Using AI to improve people's lives without negative side effects.



Professor Greta Defeyter
Department of Social Work, Education and Community Wellbeing
Leading on the fight against holiday hunger.

LEAD ON

We create confident leaders with the stamina, determination, talent and commitment to inspire and get results.

Fit for the 21st century and beyond, our students, staff and alumni do amazing things. Here are a handful of examples:



Karl Wharton MBE
Senior Lecturer in Sports Coaching

Recognised by the Queen, Karl has received an MBE for his leading work in gymnastics. Karl was Head Coach for the British National Gymnastics Team at six World Championships.



Sir Jonathan Ive
KBE, HonFREng, Hon DCL, RDI
Former Senior Design Officer – Apple

Sir Jonathan Ive is the designer of the MacBook Pro, iMac, MacBook Air, iPod, iPhone, iPad, Apple Watch and iOS 7. He is a Northumbria Design for Industry graduate (1989), and in 2012 he was knighted for his services to design and enterprise.

England Rugby Team

Northumbria graduate and team captain Owen Farrell, alongside students Anthony Watson and Mako Vunipola, led the England Rugby team to the 2019 World Cup Final in Japan against South Africa.



Professor Matt Baillie Smith
International Development

Working with the Swedish Red Cross, Matt is bringing to light the challenges faced by volunteering and developing ways to protect and support all volunteers.



Louise Trotter
Creative Director, Lacoste

Louise graduated from Fashion and Marketing (1991). She has held leadership roles at the likes of Gap, Tommy Hilfiger, Jigsaw, Calvin Klein and Joseph and more recently Creative Director at Lacoste.



TOP OF OUR GAME

Top 15 in the UK for the number of graduates* in highly skilled employment

(Graduate Outcomes 2017/18)

Top 50 in the UK for research power

Research Excellence Framework (REF 2014). The national system for assessing the quality of research in all UK universities

2nd in the UK for enterprise

Based on the turnover of business start-ups (HEBCIS 2018/19)

Best UK student city

Student Hut 'Best for 2020' league table

Top-rated UK University

Times Higher Education Young Universities Rankings 2020

UK Top 30 University

The Guardian University Guide 2021

Silver Teaching Excellence Award

Teaching Excellence Framework (TEF) 2017

Top 40 in the UK for graduate earnings post graduation

Based on median graduate earnings. Graduate Outcomes (LEO) 2016/17

**UK full time graduates*

WHERE YOU BELONG

Our London Campus is based in the heart of the UK's capital, a world-recognised centre of enterprise and international commerce.

Ranked No.1 for two consecutive years in the QS Best Student Cities (2018 & 2019), London offers an opportunity to experience university life in a fast-paced and industry-focused environment.

We provide a secure base for you to enjoy all that a world-class city has to offer, so you get the best of both worlds: engaging groups and individualised learning, within a city that has as many as 369,900 students in any one year.

Close to London's financial district, the London Campus is also ideally located for working professionals looking to study for a part-time postgraduate degree, enabling you to connect with like-minded individuals from various industries. Our highly popular postgraduate degrees can immediately benefit your current position as well as support you in the next step in your career.

Find out more:
northumbria.ac.uk/london



I AM NORTHUMBRIA



At Northumbria we welcome talented, curious, confident and creative students and staff from all around the world.

We want you to embrace life at Northumbria, explore new opportunities, get involved and be part of our community of inclusive, like-minded people, who are making a difference.

Our culturally diverse environment will stimulate ideas, innovation and debate to enhance your learning and student experience. We're passionate about what we do and we are proud of our community.

By joining Northumbria you are joining a global family. Our alumni stay connected to Northumbria to offer future talent new opportunities. So even after you graduate, you'll always be a part of Northumbria.

OUR INCREDIBLE CITY

London and the Thames

London is internationally recognised as being one of the most popular student cities in the world*. We're proud to call it our home.

Its diverse and inclusive culture and vibrant atmosphere make it one of the most exciting cities in the UK.

There's something for everyone with its blend of old and new, classic and modern, and memorable architecture and landscapes.

**QS Best Student Cities 2018 & 2019*

16 Visit us at northumbria.ac.uk/london

Tower Bridge



City Centre

The city offers a wealth of entertainment and activities to fulfil your university experience. From galleries and museums to theatres and music venues; from restaurants and cafes to pubs and clubs, there is so much to do within walking distance of our city campus.

"It's very culturally diverse here in London which is nice. I have people from Nigeria, Kenya, China, India - places all over the world - in my lectures."

Emua Rose Edebor Asuen | MSc Project Management with Advanced Practice



London is home to a wide range of accommodation; from en-suite top-of-the-range residences, to traditional student housing. Whether you're looking to socialise and meet new friends or prefer a quieter environment – there's something to suit all tastes and budgets.

Choosing where to live while you're studying in London is extremely important because it's where you'll spend most of your time when you're off campus. You can decide between en-suite rooms or standard rooms with shared living facilities. Most residences provide self-catering options, but there are also residences with catering available if you don't want to worry about cooking.

If you have any questions about the different options for accommodation or any other queries, please contact us:

T: +44 (0)20 8003 0673



Our London Campus allows students to combine the excellence of Northumbria University with a location in the capital's business and finance district. This offers you an excellent base to take full advantage of all that studying in one of the world's leading cities has to offer, including work experience and networking opportunities.

The Campus is located a short walk from Liverpool Street, Shoreditch High Street, and Aldgate stations as well as being near numerous bus stops, making it easily accessible for travelling in from your accommodation.

London Living Costs - NatWest Living Index 2020

In addition to your course fees, there are other expenses that you will need to take into consideration when studying at university; below provides an average monthly breakdown of these costings:

Rent: £716.90 pm

Food: £81.60 pm

Social life: £50.70 pm

Travel: £112.50* pm

**Based on similar student spends within the city.*

The costs highlighted above are a rough indication only and were accurate at the time of printing in March 2021 – NatWest Living Index 2020.

WORLDWIDE CONNECTIONS

London is a very accessible city. With multiple airports, national rail links, and a well-known underground transport system, it is easy to explore the UK, Europe and more, and is why our Northumbria community hosts students from more than 100 countries across the world.

TRAVEL BY AIR

London has six major airports operating both domestic and international flights to cities including Newcastle, Manchester, Dublin, Amsterdam, Paris, Rome, New York and Lisbon. These are:

London City

London Gatwick

London Heathrow

London Luton

London Stansted

London Southend

TRAVEL BY COACH

National Express operates services from London. Approximate travelling times are:

Edinburgh - 10 hours

Newcastle - 6 hours

Manchester - 5 hours

Birmingham - 3 hours

TRAVEL BY RAIL

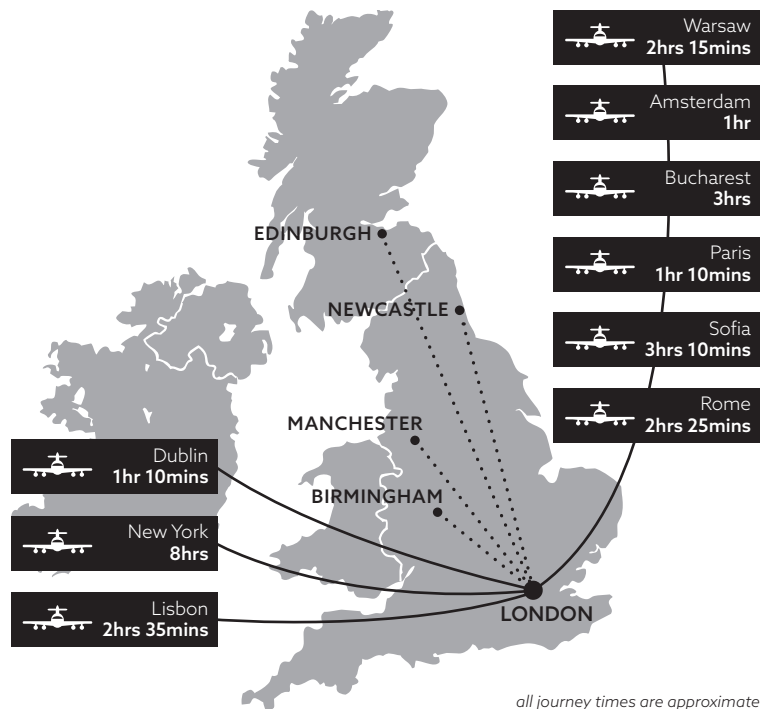
Rail services operate to many cities via national rail services and the Eurostar. Approximate travelling times are:

Edinburgh - 4h 30m

Newcastle - 3 hours

Manchester - 2h 10m

Paris - 2h 30m



all journey times are approximate

TRAVEL BY ROAD

London is very well served by the road system in the UK, with the A1(M) running from Scotland and the North, the M4 to the West and the M3 and M20 to the south coast.

TRAVEL BY SEA

Car and passenger ferry services link several ports around the UK with northern and southern Europe.

The South coast seaports are particularly accessible with train services running into central London.

THIS IS YOUR TIME

Make it count.

Join a talented, global learning community filled with ambitious, inquisitive people – just like you.

Northumbria is the place to study courses shaped by world-leading research and created in consultation with students, employers and professionals, statutory and regulatory bodies. Here, you'll learn to question, analyse, challenge, innovate, and make an impact.

We play to your strengths.

At Northumbria, everything we do is about you. We're connected, so you'll get the chance to work with global companies, expand your horizons, stretch your knowledge, and build your CV.

Our inspirational academics will equip you with everything you need to fulfil your potential – professionally and personally. Your learning experience will be tailored to ensure you're ready for life beyond graduation – for a future yet to be explored.

"This is your opportunity to develop personally and professionally, transforming who you are, what you do and how you do it, in the best research-rich learning environment."

Professor Peter Francis | Deputy Vice-Chancellor





RELEVANT & RECOGNISED

Northumbria has a long and successful history of professional accreditation for its courses. We are proud to provide our students with opportunities to gain the best education possible.

Studying a course with professional accreditation makes you more employable and will help you secure your dream job after graduation.

Over 400 of our courses are accredited by professional bodies, who periodically visit Northumbria to ensure our courses meet professional standards.

Our academic staff hold the same professional registrations and accreditations.





SUPERCHARGE YOUR CV

To build that perfect CV, you need to get hands-on experience.

Working on projects or choosing an Advanced Practice programme will build upon your skills and make your CV stand out to future employers.

An Advanced Practice programme will allow you to get workplace ready, test your knowledge and skills, and gain invaluable work experience.



At the heart of our network is the Careers and Employment Service supported by our JobsOnline website which provides access to information about job vacancies and routes to apply.

In addition, you can take advantage of our integrated programme for careers, employability and development of leadership and management skills.

Our programmes blend academic theory with expert practitioners, teaching you not only the foundation tools and skills of your chosen

subject, but also how to apply them to your existing or desired position.

Many of our postgraduate courses offer an Advanced Practice option, where you will have the opportunity to put your learning into practice in a 12-15 week internship or a research study project in your second year.

By the time you graduate, you'll really know what it takes to succeed in the workplace: to respond to a brief, develop innovative solutions and present yourself with confidence.

"Everything I learn in my first year will be shown, tested and enhanced in the Advanced Practice work experience opportunity."

Nargiza Akramova | MSc Cyber Security with Advanced Practice



CAREERS AND EMPLOYMENT



Throughout your time at Northumbria, our Careers and Employability Team will work with you to help you get that job, start your own business, or apply for further study.

This service includes:

- Careers guidance
- Advice on CVs, applications and portfolios
- Better use of LinkedIn
- Enterprise skills workshops and events

All of this will maximise your opportunities when you graduate.

Get ahead with tools for success

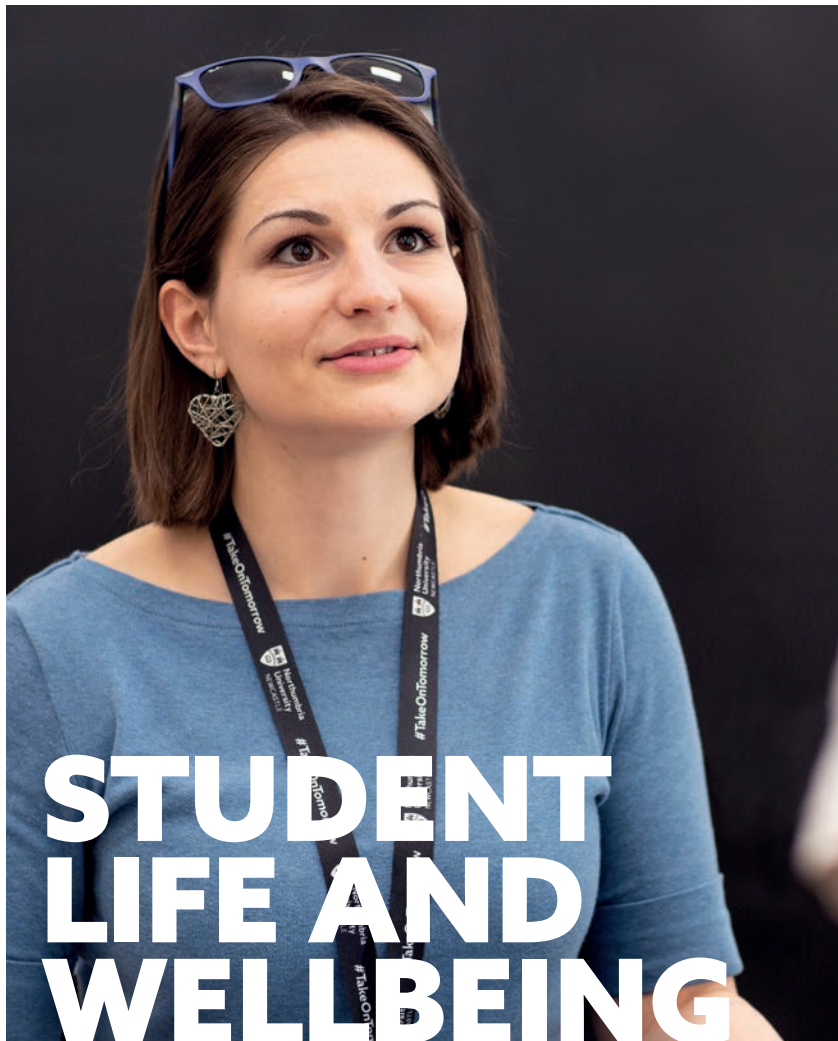
Use the interactive resources in Careers Online, your employability hub, to help you explore your career options, research employers and write effective applications.

Find job opportunities

Employers targeting Northumbria students and graduates advertise vacancies on JobsOnline. You'll get exclusive access to all of these, including graduate jobs, student and graduate internships, part-time work, volunteering and work experience opportunities.

"The Careers and Employment Service are an excellent bunch of staff who really care about your development and expanding your knowledge. There's a genuine focus on graduate employment and ensuring the best for your future."

Student Feedback from the National Student Survey



"Receiving support from Student Life and Wellbeing throughout my time at Northumbria has had a very positive impact on my self-esteem and the way I approach my studies. I consider it one of the most valuable things I've done throughout my time at university, and will take it with me through the rest of my life."

Undergraduate student of Northumbria University

Our Student Life and Wellbeing service is always on hand to support you throughout your student journey.

Before you apply, our specialist advisers are here to explain your funding options, including information on scholarships, loans and grants. They can also advise you on how to apply for extra support, such as childcare.

If you have a disability, we can explain how you can be assessed for support, so that any help you need can be put in place as early as possible. This support will continue throughout your studies and we can provide you with tailored advice on any disability or specific learning difficulty, such as dyslexia.

If you're an international student, we offer immigration and visa advice together with information on working in the UK.

This service includes:

- Financial support
- International student support
- Disability and dyslexia support
- Counselling and mental health support
- Welfare and health support

MONEY MATTERS

Financial support for UK students

Undergraduate Tuition Fee Loans

Tuition fee loans pay for your course and all undergraduate students are eligible for a loan to cover the cost of these fees, regardless of your household income. The money is paid directly to the university and you aren't required to start repaying the loan until you earn over the threshold amount.

For more information please visit:
gov.uk/student-finance

Government Loan for Postgraduate study

UK students are now able to apply for a £10,000+ postgraduate loan. The loan can be used to pay your course fees and help with living expenses.

You are able to split your loan across the duration of your course if your course lasts more than one year.

For more information please visit:
gov.uk/postgraduateloan

Instalment plan

For self-financing students studying our part-time postgraduate programmes, we are happy to offer an interest-free payment plan, allowing you to spread the cost of your course over 24 months.

For more information please visit:
northumbria.ac.uk/london-fees

Alumni Discount

If you are a graduate (both UK or international) of Northumbria University you will automatically receive a 20% discount on the annual tuition fees of most postgraduate courses.

Full terms and conditions, including exempt courses or modes of delivery, are available at:
northumbria.ac.uk/alumni

Financial support for International students

Bursaries and scholarships

The Northumbria University Bursary and Scholarship packages will provide financial help to a wide range of students, including rewarding high-achieving students and supporting those with an 'overseas' fee status.

All Scholarships and Bursaries awarded by the University are support that does not need to be paid back.

What is a bursary?

Northumbria University Bursaries are an automatic contribution towards the total cost of your tuition fees. The amount you get will depend on criteria such as income, background and personal circumstances, and in some cases geographical area.

For more information please visit:
northumbria.ac.uk/london-int-bursaries

What is a scholarship?

Scholarships are contributions towards tuition fees that are awarded to high-achieving students. It is non-repayable and will certainly help with your day-to-day finances.

For more information please visit:
northumbria.ac.uk/london-int-scholarships

Instalment plan

For self-financing international applicants studying our full-time postgraduate programmes, we are happy to offer the option of spreading the cost of your course over three months interest free.

For more information please visit:
northumbria.ac.uk/london-fees



IT STARTS HERE



You'll be part of a vibrant learning community engaging in lectures, seminars, workshops and experiential study. You'll help to shape your learning by choosing modules, projects and a dissertation topic to take you exactly where you want to be in your career.

Pre-Sessional

Ideal for those who wish to improve their English language and academic skills as well as reading, writing, listening and speaking. It is also a great introduction to the UK and British culture.

Top-Up

Equivalent to the final year of an Undergraduate degree, these one-year courses are a great way to build upon existing knowledge and skills from a previous qualification, and a popular choice for those looking to progress onto further education.

Pre-Master's

A great way to develop subject knowledge and prepare students for Master's-level study. These programmes aim to support academic development and introduce you to university life.

Postgraduate

An ideal way to continue education, support career progression and develop subject knowledge and confidence. Postgraduate degrees are designed with employability in mind and provide the chance to grow experience - putting students ahead of the competition.



OUR COURSES



The following pages list the courses we have to offer, how to apply, and some of your finance options.

Once you know which course you are interested in, how do you know what you need to achieve to get here? On every course page we've highlighted the entry points we would typically ask for. These requirements are provided as a guide to our standard offer levels and we may take into account alternative equivalent qualifications.

At Northumbria, we have a flexible and inclusive approach to assessing potential candidates. We know there are many different qualifications, skills and experiences which can all contribute to your application.

We make an offer based on the individual and our published entry requirements are typical of our standard offer, so just think of them as a guideline.

Feel free to get in touch to talk to us about any queries that you may have. A member of our dedicated recruitment team will be happy to help.

Pre-Sessional	p38
Top-Up	p42
Pre-Master's	p52
Postgraduate	p56

PRE-SESSIONAL ENGLISH AND STUDY SKILLS



Our Pre-Sessional English programme is designed to build your English language abilities ready for undergraduate or postgraduate study.

The programme teaches you the language and other academic skills necessary for you to gain the maximum benefit from your future academic course.

You will develop academic English skills in a content-based approach to learning as well as the ideas and concepts necessary to participate in the global academic community.

- Improve your academic study skills, as well as your reading, writing, listening and speaking skills
- Introduce yourself to life in the UK and British culture
- Develop your understanding of university systems, services and facilities

Duration	6 weeks	12 weeks
Tuition fee	£1,600	£3,250
Start dates	July, November, March	June, October, February
Assessment method	Coursework and final exam	
Delivery method	Full-time classroom based 16 hours per week + 3 hours for tutorials	
Entry requirements	Relevant target degree admissions requirements apply and must be over 18 years old	
English language requirements	0.5 to 1.0 below your target degree's English language requirements overall	

How will I be taught and assessed?

A particular emphasis is placed on reading and writing academic English and you will be supported in producing an extended essay as part of your assessment. You will also work in teams to engage in research projects and present your findings orally.

You will be assigned your own Personal Guidance Tutor who will provide academic and pastoral support and be your first point of contact if you have questions or problems.

Accredited by the British Council for the teaching of English in the UK.

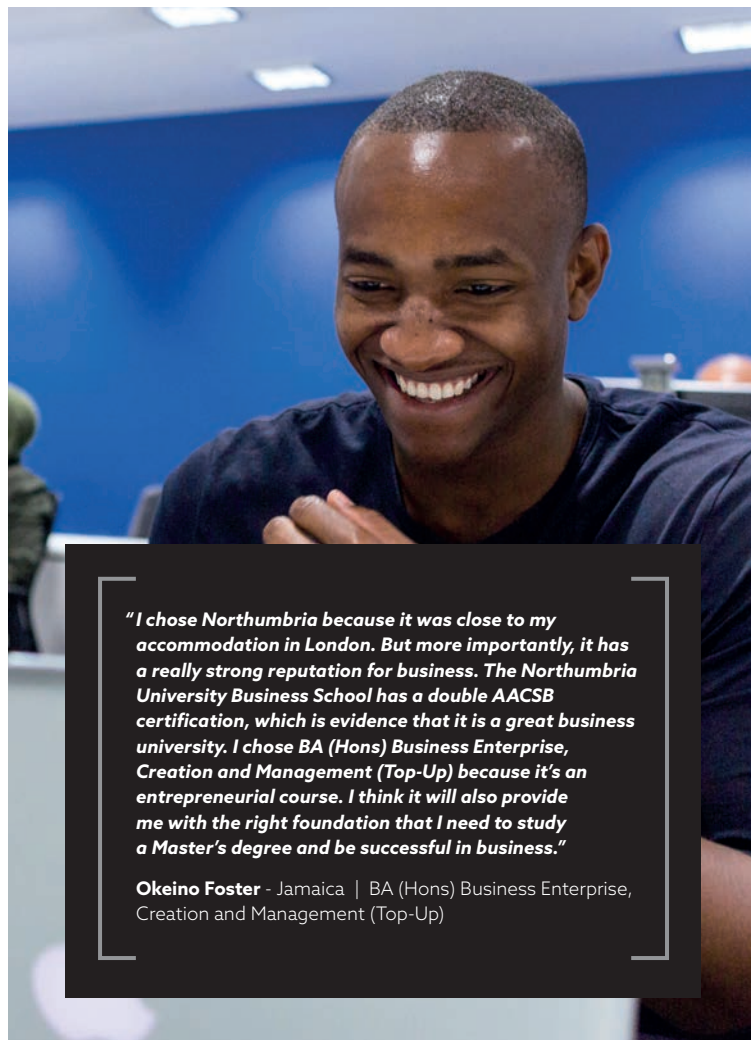
Careers and further study

Progression on to your chosen academic course depends on a mix of continuous assessment and an end-of-semester examination (not IELTS).

Example modules:

- Listening and Speaking
- Reading Skills
- Writing Skills
- Researching Life in Britain
- Social English

All modules are 0 credits unless specified



"I chose Northumbria because it was close to my accommodation in London. But more importantly, it has a really strong reputation for business. The Northumbria University Business School has a double AACSB certification, which is evidence that it is a great business university. I chose BA (Hons) Business Enterprise, Creation and Management (Top-Up) because it's an entrepreneurial course. I think it will also provide me with the right foundation that I need to study a Master's degree and be successful in business."

Okeino Foster - Jamaica | BA (Hons) Business Enterprise, Creation and Management (Top-Up)

TOP-UP DEGREES



There are lots of different routes in to higher education, each depending on the qualifications you hold, and at which level.

If you currently hold an HND, Foundation Degree or equivalent Level 5 qualification, you may be able to join one of our Top-Up degrees. These programmes are the final year of an undergraduate degree. They will build upon your knowledge and skills from your previous qualification and are a very popular choice among students looking to progress and achieve an undergraduate degree with just one year of study.

BA (Hons) Accounting and Finance (Top-Up)

p44

BA (Hons) Business (Top-Up)

p46

BA (Hons) Business Enterprise, Creation and Management (Top-Up)

p48

BA (Hons) International Banking & Finance (Top-Up)

p50



Progression options for Top-Up degrees

We offer a range of industry-focused postgraduate degrees designed with employability in mind, each developing the key skills and expertise that employers look for when hiring new recruits.

Find out more:
northumbria.ac.uk/london-pg

BA (Hons) Accounting and Finance (Top-Up)



This course will allow you to top up your existing qualifications to an honours degree in one year, while benefiting from all that Northumbria University has to offer. You'll build on your all-round knowledge of business, adding expertise in accounting and finance as well as transferable professional and managerial techniques.

Whatever you decide to do, you will have strong employability as a result of having acquired the characteristics of a Northumbria graduate. These include critical reflection and self-learning, collaboration and curiosity, and the ability to apply your knowledge to solve problems in ways that are sustainable and ethical.

The Newcastle Business School is part of a select group of business schools worldwide, following accreditation by the Association to Advance Collegiate Schools of Business (AACSB) in business and accounting - the first in Europe to gain the double accreditation.

UCAS	N77 N420
Duration	1 year
Tuition fee	UK: £9,250 International: £16,000
Start dates	September
Assessment method	Coursework
Delivery method	Full-time classroom based
Entry requirements	A HND (merit profile)/Foundation Degree (with 60% average) in a related discipline or equivalent with GCSE Maths and English language at Grade 4 (previously C) or above.
English language requirements	IELTS 6.5 (or above) with no single element below 5.5 or equivalent. Internal English language test is also accepted.

How will I be taught and assessed?

You will be taught through a combination of lectures and seminars, though for the more technical aspects you will also attend computer-based workshops. You will also be expected to engage in independent study involving directed and self-directed learning.

Careers and further study

At the end of this course, you could follow previous graduates into accounting and finance roles, including training contracts with leading accounting practices. Equally, you could move into a range of careers in business and management, both in the UK and around the world.

Example modules:

- Academic and Career Development
- Strategic Management Accounting
- Contemporary Corporate Reporting
- Contemporary Issues in Business
- Strategic Management and Corporate Responsibility
- International Finance and Financial Management
- Study Support (0 credits)
- Academic Language Skills for Northumbria Business School (0 credits)

All modules are core and worth 20 credits unless specified

BA (Hons) Business (Top-Up)



If you are interested in the world of business and its many applications, this course allows you to further your achievements gained from either a HND (Higher National Diploma) in Business, a Foundation Degree, SQA HND, or equivalent qualification.

The Newcastle Business School is part of a select group of business schools worldwide, following accreditation by the Association to Advance Collegiate Schools of Business (AACSB) in business and accounting - the first in Europe to gain the double accreditation.

UCAS	N77 N1N8
Duration	1 year
Tuition fee	UK: £9,250 International: £16,000
Start dates	September
Assessment method	Coursework
Delivery method	Full-time classroom based
Entry requirements	HND/Foundation Degree or BTEC/HND in a business related subject with average merits/commendations in final year
English language requirements	IELTS 6.5 (or above) with no single element below 5.5 or equivalent. Internal English language test is also accepted.

Throughout the course you will study a variety of different topics, each designed to develop your understanding of business and build the key skills that today's employers expect from top-calibre graduate recruits.

How will I be taught and assessed?

The course will be taught using a variety of teaching and learning strategies to encourage and develop your independent learning skills.

Careers and further study

Upon graduation you could enter a career in consultancy, marketing, health management, human resource management or operations management, as well as having the skills to set up your own business.

Example modules:

- Supporting Study in the UK (0 credits)
- Academic and Career Development
- Critical Organisational Analysis
- Strategic Supply Chain Management
- Contemporary Issues in Business
- Strategic Management and Corporate Responsibility
- International Business and Innovation (optional)
- Digital and Data Driven Marketing (optional)
- Academic Language Skills (0 credits)

All modules are core and worth 20 credits unless specified

BA (Hons) Business Enterprise, Creation and Management (Top-Up)



**Do you have plans to create your own business or work in an SME?
Do you want to develop your business, management and leadership skills
whilst gaining a valuable degree qualification?**

This highly practical degree assesses your performance through a range of tasks directly related to creating, working in and managing an SME.

The programme centres on developing your skills and knowledge in the areas of management, leadership, innovation, creativity, marketing, human resource management, finance, strategy and business planning.

We also spend a significant amount of time developing your own personal competence as a learner, leader and entrepreneur.

How will I be taught and assessed?

You will be taught through lectures, seminars, tutorials/workshops. You will be assessed via a range of practical tasks aimed at developing your understanding of, and competence in key areas of Business Planning, Strategic Management, HRM, Marketing, Creativity, Entrepreneurship and Financial Management.

UCAS	N77 N190
Duration	1 year
Tuition fee	UK: £9,250 International: £16,000
Start dates	September, January, May
Assessment method	Coursework and projects
Delivery method	Full-time classroom based
Entry requirements	HND/Foundation Degree with GCSE Maths and English Language at Grade 4 or above.
English language requirements	IELTS 6.5 (or above) with no single element less than 5.5 or equivalent. Internal English language test is also accepted.

Careers and further study

This programme is all about developing your ability to create and run your own successful business or work in an SME (small or medium enterprise) in a range of sectors.

All the skills acquired on this programme are in high demand by employers looking for resourceful and creative managers, providing you with a broad range of options on completion.

Example modules:

- Academic Language Skills (0 credits)
- Supporting Study in the UK (0 credits)
- Developing Research Informed Learning and Practice
- Leadership for SMEs
- Entrepreneurship, Creativity and Marketing
- SME Project
- Finance in an SME context
- Designing and Implementing SME Business Strategy

All modules are core and worth 20 credits unless specified

BA (Hons) International Banking and Finance (Top-Up)



Hoping to pursue a career in banking and finance, gain first-hand experience of financial market facilities with the chance to touch real-time data taught by experts from the banking and finance industry? Then this Top-Up degree may just be what you are looking for.

Throughout the course you will have the opportunity to build your portfolio and employability, distinguishing yourself from your competitors with first-hand experience of current market developments and financial data.

How will I be taught and assessed?

You will be taught through tutorials, seminars and workshops. The course also draws upon specialist database, OSIRIS, as part of your programme.

Assessments are based on coursework and projects.

UCAS	N77 N4N2
Duration	1 year
Tuition fee	UK: £9,250 International: £16,000
Start dates	September, January
Assessment method	Coursework and projects
Delivery method	Full-time classroom based
Entry requirements	HND (merit profile)/Foundation Degree in a related discipline with GCSE Maths and English Language at Grade 4 or above.
English language requirements	IELTS 6.5 (or above) with no single element below 5.5 or equivalent. Internal English language test is also accepted.

Careers and further study

Upon graduation you will be equipped with the skills and knowledge to join the banking and finance industry in areas such as financial services, financial advisory work, international banking, building societies, insurance companies, credit unions and other financial intermediaries.

For those students wishing to further enhance their CV, two modules are mapped towards the Associated Professional Risk Manager certification, therefore allowing easy transition to certification upon completion of the programme.

Example modules:

- Academic Language Skills (0 credits)
- Banking Risk 1
- International Finance and Responsible Financial Management
- Banking Risk 2
- Academic and Career Development
- Contemporary Issues in Business
- Study Support (0 credits)
- Strategic Management and Corporate Responsibility

All modules are core and worth 20 credits unless specified

PRE - MASTER'S



If you are looking to gain the entry qualifications to study one of our postgraduate degrees, our Graduate Certificate programme has been specifically designed to help further develop your academic skills, subject knowledge and prepare you for Master's-level study.

If you have a minimum of a third class pass or ordinary degree from a UK university or equivalent, then you will be eligible to study our Pre-Master's programme.

Progression options

Upon successful completion of the Graduate Certificate in Business, subject to a minimum pass mark, you will be able to progress on to one of our full-time postgraduate degrees at either our London or Newcastle Campus. You will automatically receive a conditional offer to study with us on one of our postgraduate programmes.

Fast-track your career

Whether you're looking to fast-track your first steps on the career ladder, change your direction, or take your knowledge and skills to the next level, our postgraduate degrees provide you with the chance to expand your horizons and give your career the edge, whether you want to work for yourself or another organisation.

Change direction

Northumbria University London enables you to specialise in a variety of subject areas including computing and project management courses as well as a diverse list of 'Business with' programmes featuring finance, marketing, international and entrepreneurship specialities.

Industry experience

Another additional advantage of choosing to progress on to one of our postgraduate courses is the opportunity to complete either an internship or a group consultancy/ research project by choosing to study the Advanced Practice option. This route involves extending your studies, providing you with an opportunity to gain real experience in a business environment to help you stand out from the crowd.

Graduate Certificate in Business



If you require additional academic support to study one of our Master's programmes, the Graduate Certificate in Business is designed to build your knowledge and skills to bridge this gap.

The Graduate Certificate in Business consists of two modules that will prepare you for the transition into our Master's programmes. These modules are designed to build your skills, knowledge and the confidence needed to study successfully at postgraduate level.

Duration	4 months/1 semester
Tuition fee	UK: £3,495 International: £6,750
Start dates	September, January, May
Assessment method	Coursework, presentation and exams
Delivery method	Full-time classroom based
Entry requirements	Minimum of a third class pass or ordinary degree from a UK university or equivalent.*
English language requirements	IELTS 6.5 (or above) with no single element below 5.5 or equivalent. Internal English language test is also accepted.

How will I be taught and assessed?

Throughout the course you will be expected to attend and engage in lectures and seminars to help you understand how to apply theory to practice and we use a range of materials and case studies to support your learning throughout the course.

Your assessments take place through coursework, presentation and exams.

Careers and further study

Studying the Graduate Certificate in Business is the ideal preparation for studying one of our Master's programmes at the London Campus. These programmes are heavily research informed and designed in consultation with industry partners.

Example modules:

- Developing Academic Skills for Business and Management (20 credits)
- Business and Management in Context (40 credits)

All modules are core

**For students from China, Da Zhuan Diploma is accepted*

POSTGRADUATE DEGREES



Whether you've just completed your undergraduate degree, are in the early stages of your career and want to take the next step, or you're currently juggling a career and family, this is your time. Use it wisely – develop your knowledge, pursue your interests, build your skills and career, and join a talented, global learning community filled with ambitious, inquisitive people – just like you.

Our inspirational academics will equip you with everything you need to fulfil your potential – professionally and personally. Ready for life beyond graduation – for a future yet to be explored.

Advanced Practice

If you are interested in studying a postgraduate degree in London you can choose between the normal course structure of two semesters of teaching followed by a dissertation or project, or you can choose to study an Advanced Practice programme.

See [page 58](#) for more information.

Find out more:
northumbria.ac.uk/london-ap

Professional Pathways

We want to make sure you have the professional skills to advance your career and believe that learning should be an ongoing process. Through our partner, QA Higher Education, each of our full-time London Campus Master's students may be eligible to undertake 3 short professional training courses through QA, on completion of your programme.

The Professional Pathways are available for eligible students at no extra cost. This gives you the opportunity to add further training which, depending on your course choice, can be worth more than £3,000, adding value to your CV and continuing to develop your skills from one of the UK's largest corporate training providers, QA.

Find out more:
northumbria.ac.uk/london-careers

ADVANCED PRACTICE

The Advanced Practice element of the programme allows you to extend your studies to include either an **Internship (may be paid or unpaid)**, a **Group Consultancy Project** or a **Research Project**, enabling you to work on a business problem, developing valuable work experience and industry insight.

Fast-track your career

The programmes offer you an opportunity to stand out in interviews, allowing you to recall real examples of skills learnt when applying for future jobs. Whether it is attending meetings, gathering market research or analysing recent figures – contributing to an organisation and communicating with staff will give you experience beyond the classroom.

For more information on the options available to you please refer to your specific programme page, or our website: northumbria.ac.uk/london-ap

Course structure

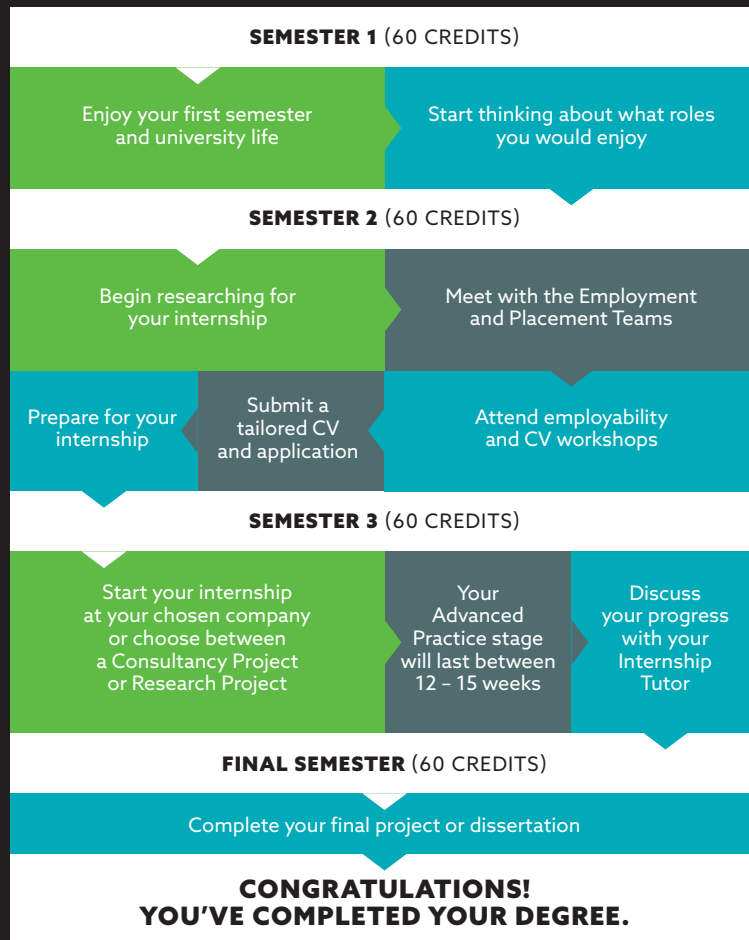
The Advanced Practice stage of the programme commences in your penultimate semester. If you start your programme in September, this will be after a summer break. If you start your programme in January you will have a summer break between semester 1 and 2, and again between the Advanced Practice stage and final semester. If you start your programme in May this will be straight after your second semester. You will work closely with our Employment and Placement Teams who will help you secure an internship of between 12 and 15 weeks. This will be equivalent to a full-time position.

Advanced Practice fees*:

UK: £3,000

International: £3,000

*This fee is in addition to the fees of your chosen course.



The above diagram represents the typical route to undertake an Internship. Consultancy Projects and Research Projects will differ - your tutor will guide you through this process.

MA Luxury Brand Management



The programme aims to develop an innovative approach to the professional luxury brand management of luxury consumable goods (cars, cosmetics, drinks, fashion, fragrances, handbags, jewellery, luggage, yachts and watches).

The programme provides you with the critical knowledge and awareness of the complex issues involved in the luxury consumable goods sector in the 21st century, working on concepts and platforms such as brand management, marketing, advertising and social media.

How will I be taught and assessed?

Teaching on this programme is delivered through a mix of lectures and seminars. You will also be expected to engage in independent study involving directed and self-directed learning. You will be assessed via coursework including presentations, portfolios, reports and case studies.

Careers and further study

This programme encourages the development of entrepreneurial behaviours such as setting clear goals that you need to enter and succeed in your future career aspirations, including becoming global luxury brand managers who are critical and independent thinkers and not afraid to ask the big and, often challenging questions.

	Master's Programme	Advanced Practice
Duration	1 year	21 - 24 months
Tuition fee	UK: £7,350 International: £16,000	UK: £10,350 International: £19,000
Start dates	September, January	
Assessment method	Coursework	
Delivery method	Full-time classroom based	
Entry requirements	Minimum of a 2:2 honours degree or equivalent from a recognised university. Professional qualifications may also be accepted.	
English language requirements	IELTS 6.5 (or above) with no single element below 5.5 or equivalent. Internal English language test is also accepted.	

Example modules:

- Academic and Professional Development (0 credits)
- Luxury Brand Management
- Luxury Brand Value
- Luxury Industry Project
- Design Process
- Luxury Brand Management Dissertation (60 credits)

Advanced Practice stage

For students completing an internship:

- ADSS Advanced Practice Internship (60 credits)

For students not completing an internship:

- ADSS Advanced Practice Consultancy Project (60 credits)
- or**
- ADSS Advanced Practice Research Project (60 credits)

All students will then progress to:

- Luxury Brand Management Dissertation (60 credits)

All modules are 30 credits unless specified

MSc Business with Specialisms



The 'MSc Business with' programmes are postgraduate degrees that develop broad business skills while offering a specialist pathway. This specialism focuses on a particular sector and provides a competitive edge that will enhance your employability.

Available programmes

MSc Business with Business Analytics

MSc Business with Entrepreneurship

MSc Business with Financial Management

MSc Business with Hospitality and Tourism Management

MSc Business with Human Resource Management

MSc Business with International Management

MSc Business with Marketing Management

Example modules:

- Strategic Management for Competitive Advantage (40 credits)
- Leadership and Management Development (20 credits)
- Research Methods and Analytics for Business Practice (20 credits)
- The Newcastle Business School Master's Dissertation (60 credits)
- Academic Language Skills for Post-Graduate Business Students (0 credits)

	Master's Programme	Advanced Practice
Duration	1 year	16-24 months
Tuition fee	UK: £9,450 International: £16,000	UK: £12,450 International: £19,000
Start dates	September, January, May	
Assessment method	Coursework (<i>some pathways include exams, see below</i>)	
Delivery method	Full-time classroom based	
Entry requirements	Minimum 2:2 honours degree from a UK university or equivalent. Substantial experience in a business organisation or relevant professional qualifications may also be considered.	
English language requirements	IELTS 6.5 (or above) with no single element below 5.5 or equivalent. Internal English language test is also accepted.	

Advanced Practice

These programmes are also available with an Advanced Practice option in which students are given the opportunity to secure a work placement or complete a group consultancy project. For more information, please see page 58.

The Newcastle Business School is part of a select group of business schools worldwide, following accreditation by the Association to Advance Collegiate Schools of Business (AACSB) in business and accounting - the first in Europe to gain the double accreditation.

How will I be taught and assessed?

Our academics use a variety of teaching methods including lectures, seminars and workshops. Assessments mostly include coursework, presentations and group work, some specialisms also include exams, specified below.

You'll be taught by experienced lecturers and academics who use their industry experience to demonstrate how the theories you will learn translate in to real life situations.

Careers and further study

Graduates of the MSc Business with programmes typically go into professional and graduate management positions.

Specialist Pathways

The following information details the additional example modules specific to each programme, as well as any differences in how the programme is presented.

MSc Business with Business Analytics

- Marketing Metrics and Analysis
- Business Intelligence

MSc Business with Entrepreneurship

- Entrepreneurship – Context, Process and Practice
- Contemporary Issues in Entrepreneurship

MSc Business with Financial Management*

- International Financial Markets and Institutions
- Corporate Financial Management

MSc Business with Hospitality and Tourism Management

- Contemporary Hospitality Management
- Tourists and Tourism

MSc Business with Human Resource Management*

- Organisational Behaviour and Practice
- HRM in Practice

MSc Business with International Management*

- Global and Transnational Business
- Global Consumers and Marketplaces

MSc Business with Marketing Management*

- Contemporary Issues in Consumer Behaviour
- Global Consumers and Marketplaces

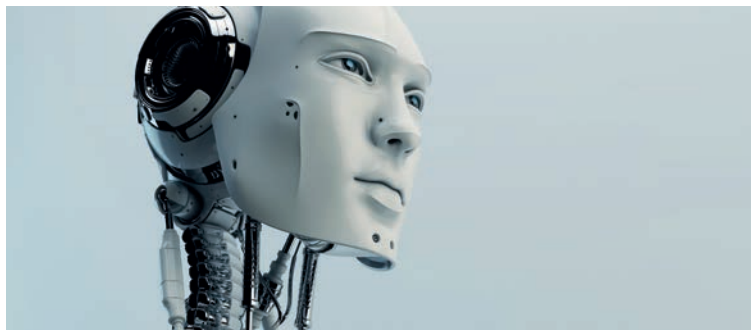
*This programme includes exams as well as coursework in its assessment methods.



“International Management appealed to me because of the potential to communicate and work with people across the entire world. I feel that the course has given me a lot of knowledge and I truly feel like I’m learning from the best.”

Diana Sanda Faieran | MSc Business with International Management

MSc Computing and Technology



The MSc Computing and Technology has been designed in consultation with partners in industry to ensure you graduate with up-to-date and industry-relevant skills and knowledge.

The Advanced Practice version of this course gives you the opportunity to put your learning into practice with an internship or research study project. See page 58 for more information.

The programme develops competences in a range of computing techniques alongside softer skills in leadership, communication, problem solving and commercial reasoning.

How will I be taught and assessed?

Your tutors will use a range of teaching methods including lectures and seminars, as well as tutorials in our fully equipped computing labs. You will be expected to engage in additional independent study each week, involving directed and self-directed learning. Assessments are based on coursework only.

Careers and further study

Graduates from this course will have opportunities in a range of exciting careers in the IT industry. The programme in particular develops your competencies in leadership and management within IT, typical roles include Software Engineer, Database Developer or Analyst.

	Master's Programme	Advanced Practice
Duration	1 year	16-24 months
Tuition fee	UK: £8,400 International: £16,000	UK: £11,400 International: £19,000
Start dates	September, January, May	
Assessment method	Coursework	
Delivery method	Full-time classroom based	
Entry requirements	Minimum of a 2:2 honours degree or equivalent in any discipline. Professional qualifications may also be accepted.	
English language requirements	IELTS 6.5 (or above) with no single element below 5.5, or equivalent. Internal English language test is also accepted.	

Example modules:

- Information Governance and Cyber Security
- Leadership in a Digital Age
- Principles of Software Engineering
- Database and Analytics Principles
- Innovations in Business and Technology
- Research Methods for Professional Practice
- Academic Language Skills for Computer and Information Sciences (0 credits)
- Computing and Digital Technologies Project (60 credits)

Advanced Practice stage

For students completing an internship:

- Advanced Practice Internship (60 credits)

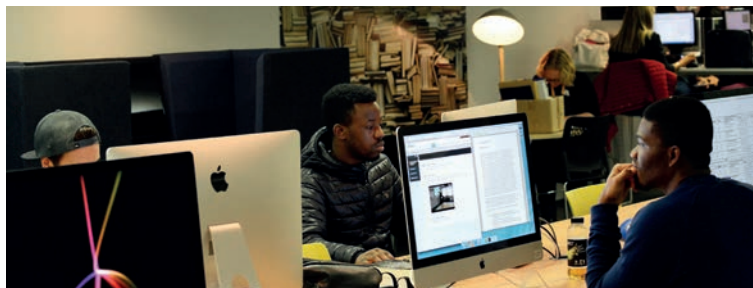
For students not completing an internship:

- Advanced Practice Group Consultancy Project (60 credits)
- or**
- Advanced Practice Research Project (60 credits)

All modules are 20 credits unless specified

Also available as a part-time programme. See page 83 for more information.

MSc Cyber Security



Our MSc Cyber Security provides you with a critical understanding of information governance and assurance, combined with technology risk management practices.

You will be introduced to key theoretical and practical aspects using real world scenarios and case studies. The course will develop and enhance your ability to handle security incidents as well as identifying new and existing threats and determining methods to minimise them.

How will I be taught and assessed?

Throughout the course, you will be able to trial new approaches and processes in a safe environment, working on real-life scenarios and case studies. You will have an individual guidance tutor as well as weekly academic support sessions enabling you to build your confidence and ability as a postgraduate learner. Assessment includes coursework and exams.

Careers and further study

Graduates from this programme will be well equipped to work in a variety of careers in the IT industry or to progress to academic or research-orientated careers. This programme will also prepare you to meet the educational requirements of the BCS, The Chartered Institute for IT for professional membership.

	Master's Programme	Advanced Practice
Duration	1 year	16-24 months
Tuition fee	UK: £8,400 International: £16,000	UK: £11,400 International: £19,000
Start dates	September, January, May	
Assessment method	Coursework and exams	
Delivery method	Full-time classroom based	
Entry requirements	Minimum of a 2:2 honours degree or equivalent from a recognised university in a related subject area. Professional qualifications may also be accepted.	
English language requirements	IELTS 6.5 (or above) with no single element below 5.5 or equivalent. Internal English language test is also accepted.	

Example modules:

- Information Governance and Security
- Ethical Hacking for Cyber Security
- Network Security
- Information Assurance and Risk Management
- Research Methods and Project Management
- Wireless Networks and Security
- MSc Computer Science and Digital Technologies Project (60 credits)

Advanced Practice stage

For students completing an internship:

- Master's Internship (60 credits)

For students not completing an internship:

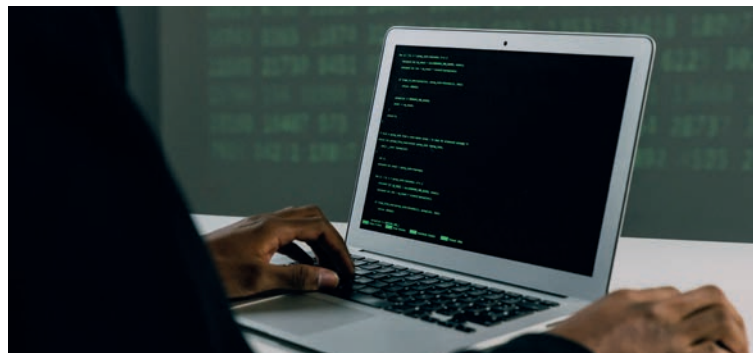
- Research Placement (60 credits)

All modules are 20 credits unless specified

Also available as a part-time programme. See page 83 for more information.

This MSc Cyber Security has been awarded provisional certification in Cyber Security from the NCSC (National Cyber Security Centre).

MSc Cyber Security Technology



Our MSc Cyber Security Technology has been designed for those who have an undergraduate degree in any discipline, with no prior cyber security experience, and wish to study a cyber security qualification in order to develop a career path in this discipline.

How will I be taught and assessed?

You'll be taught by experienced lecturers and academics who use their industry and research experience to demonstrate how the theories, tools, technologies and methods you will learn on the programme translate in to real life situations. Teaching will take place in a mix of workshops, tutorials and directed study. Assessments include report writing, a physical artifact such as a programme or database, portfolio and final project.

Careers and further study

This Master's programme provides a foundation to ensure that graduates will be equipped to work in a variety of careers in the cyber security/IT industry or to progress to academic or research-orientated careers. Indeed, the qualification is designed to accelerate your skills and competence in a range of job roles, including roles in leadership and management in IT.

	Master's Programme	Advanced Practice
Duration	1 year	16-24 months
Tuition fee	UK: £8,400 International: £16,000	UK: £11,400 International: £19,000
Start dates	September, January, May	
Assessment method	Coursework	
Delivery method	Full-time classroom based	
Entry requirements	Minimum of a 2:2 honours degree or equivalent from a recognised university in any subject (except Cyber Security). Professional qualifications may also be accepted.	
English language requirements	IELTS 6.5 (or above) with no single element below 5.5 or equivalent. Internal English language test is also accepted.	

Example modules:

- Information Governance and Cyber Security
- Leadership in a Digital Age
- Big Data and Cloud Security
- Computer Networks and Security
- Computer Security
- Research Methods for Professional Practice
- Academic Language Skills for Computer and Information Sciences (0 credits)
- Computing and Digital Technologies Project (60 credits)

Advanced Practice stage

For students completing an internship:

- Master's Internship (60 credits)

For students not completing an internship:

- Advanced Practice Research Project (60 credits)
- or**
- Advanced Practice Group Consultancy Project (60 credits)

All modules are 20 credits unless specified

Also available as a part-time programme. See page 83 for more information.

MSc Digital Marketing



Whether you are a business student looking to build your knowledge and specialise in the digital domain or looking to join the marketing world, the MSc Digital Marketing programme has been designed to accelerate your career potential in a rapidly developing sector.

You will understand the value of, and methods for, determining return on investment of internet marketing programs, as well as online visitor and buyer behaviour, customer journey mapping, mobile marketing and social media.

We have established working relationships with key bodies such as CIM and IDM allowing the course content to be reflective of their syllabus.

How will I be taught and assessed?

You will be taught through a mix of lectures, seminars and workshops to enable you to grow your knowledge of the business world. In addition, you will be expected to engage in independent study involving directed and self-directed learning.

Assessments include group work, assignments, presentations and exams giving you multiple methods to demonstrate your understanding of the course.

Careers and further study

Graduates will be well suited to join a wide range of businesses, including graduate training schemes or even start up their own business, or begin a professional qualification with one of the marketing industry bodies.

	Master's Programme	Advanced Practice
Duration	1 year	16-24 months
Tuition fee	UK: £9,450 International: £16,000	UK: £12,450 International: £19,000
Start dates	September, January, May	
Assessment method	Coursework and exams	
Delivery method	Full-time classroom based	
Entry requirements	Minimum of a 2:2 honours degree or equivalent from a recognised university. Professional qualifications may also be accepted.	
English language requirements	IELTS 6.5 (or above) with no single element below 5.5 or equivalent. Internal English language test is also accepted.	

Example modules:

- Marketing Metrics and Analysis
- Strategic Marketing in the Digital Era
- The Digital Customer Journey: Data, Profiling and CRM
- Digital Campaign Management and Media
- Leadership and Management Development
- Research Methods for Analytics for Business Practice
- Dissertation Preparation and Research Methods (0 credits)
- Academic Language Skills for Post-Graduate Business Students (0 credits)

- The Newcastle Business School Master's Dissertation (60 credits)

Advanced Practice stage

For students completing an internship:

- Master's Internship (60 credits)
- The Newcastle Business School Master's Dissertation (60 credits)

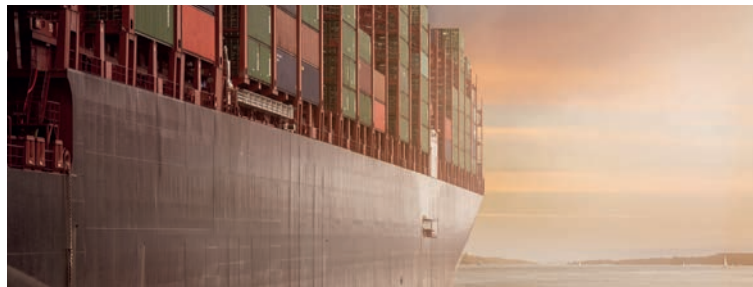
For students not completing an internship:

- Business Clinic PG Group Consultancy Project (60 credits)
- Applied Management Work Investigation (60 credits)*

All modules are 20 credits unless specified

*Progression to the Applied Management Work Investigation is subject to specific entry requirements, otherwise you will progress on to a Dissertation.

MSc Global Logistics, Operations and Supply Chain Management*



The MSc in Global Logistics, Operations and Supply Chain Management has been designed to enable you to acquire an in-depth understanding of the major areas of knowledge and philosophical approaches that underpin the concept of the Global Supply Process.

The key specialist modules are resultant from both academic and professional influence as to strategic change factors within the global supply process.

How will I be taught and assessed?

You will be taught through a mixture of lectures, seminars and workshops. Assessments include coursework, presentations and exams.

Careers and further study

Graduates will be well placed to secure roles in a variety of sectors in a range of areas, including Operations, Quality Management, Distribution and E-Commerce, to name a few.

This programme is accredited by the Chartered Institute of Purchasing and Supply (CIPS) and the Chartered Institute of Logistics and Transport (CILT).

*This programme is due for revalidation in Summer 2021. Changes are anticipated to course content and modules. Please visit the online course page for the most up-to-date information.

**Progression to the Applied Management Work Investigation is subject to specific entry requirements, otherwise you will progress on to a Dissertation.

	Master's Programme	Advanced Practice
Duration	1 year	21-24 months
Tuition fee	UK: £8,400 International: £16,000	UK: £11,400 International: £19,000
Start dates	September, January	
Assessment method	Coursework and exams	
Delivery method	Full-time classroom based	
Entry requirements	Minimum of a 2:2 honours degree or equivalent from a recognised university. Professional qualifications may also be accepted.	
English language requirements	IELTS 6.5 (or above) with no single element below 6.0, or equivalent. Internal English language test is also accepted.	

Example modules:

- Operations and Supply Chain Improvement
- Sustainable Supply Chain Management and Risk
- Dissertation Preparation and Research Methods (0 credits)
- Leadership and Management Development
- Research Methods and Analytics for Business Practice
- Strategic Partnership and Value Creation
- The Newcastle Business School Master's Dissertation (60 credits)
- or
- The Newcastle Business School Master's Consultancy Project (60 credits)

- Strategic Procurement and Logistics
- Academic Language Skills for Post-Graduate Business Students (0 credits)

Advanced Practice stage

For students completing an internship:

- Master's Internship (60 credits)
- The Newcastle Business School Master's Dissertation (60 credits)

For students not completing an internship:

- Business Clinic PG Group Consultancy Project (60 credits)
- Applied Management Work Investigation (60 credits)**

All modules are 20 credits unless specified

MSc International Project Management



This Master's programme addresses the knowledge, skills and behaviours required to successfully overcome project challenges and manage projects that span organisations, national boundaries and cultural differences.

In this programme you will explore the impact of culture, language variations, religious, contractual, regulatory and legal practices, technology penetration, temporal orientation, gender issues, corruption, ethics, personal liberty and political contexts on project management.

How will I be taught and assessed?

You will be taught through a mix of lectures, seminars and workshops to enable you to grow your knowledge of project management frameworks and skills.

Assessments include report writing, practical exercises, individual and group project work.

Careers and further study

This course will open up opportunities in many industries in a variety of project management roles, including: project managers, programme managers, project portfolio managers, management consultants, business developers, entrepreneurs, quality managers and directors.

	Master's Programme	Advanced Practice
Duration	1 year	16-24 months
Tuition fee	UK: £7,350 International: £16,000	UK: £10,350 International: £19,000
Start dates	September, January, May	
Assessment method	Coursework	
Delivery method	Full-time classroom based	
Entry requirements	Minimum of a 2:2 honours degree or equivalent from a recognised university. Professional qualifications may also be accepted.	
English language requirements	IELTS 6.5 (or above) with no single element below 5.5 or equivalent. Internal English language test is also accepted.	

Example modules:

- Strategic Management
- Project Implementation in a Multinational Context
- International Financial and Contractual Management
- Managing Programmes and Projects
- Research Methods for Professional Practice
- People Management in Global Organisations
- Academic Language Skills (0 credits)
- Professional Practice in Project Management Project (60 credits)

Advanced Practice stage

For students completing an internship:

- Engineering and Environment Internship (60 credits)

For students not completing an internship you will choose between one of the following:

- Engineering and Environment Research Project (60 credits)
- Engineering and Environment Consultancy Project (60 credits)

All students will then progress to:

- Professional Practice in Project Management Project (60 credits)

All modules are 20 credits unless specified

MSc Web and Mobile Development Technologies*



The MSc Web and Mobile Development Technologies is designed to help you develop the lifelong skills needed to rise to the challenge and opportunity of emerging technologies, and engage in an area which is notoriously high risk and has an increased potential of unreliability.

During this course key themes of study include theories and principles relating to emerging design, the development and testing of web and mobile applications and User Experience/User Interface (UX/UI) design processes.

How will I be taught and assessed?

You will be taught through lectures, tutorials, workshops and directed study, and will also be expected to invest equal time on self-directed learning.

Assessments include assignments, presentations and group work.

You will develop independent research skills to manage risk and identify, recommend and deploy relevant technologies, learning alongside a diverse group of like-minded IT students, share ideas, and build your network.

Duration	1 year
Tuition fee	UK: £8,400 International: £16,000
Start dates	September, January
Assessment method	Coursework
Delivery method	Full time classroom based
Entry requirements	Minimum of a 2:2 honours degree or equivalent from a recognised university in a related subject area. Professional qualifications may also be accepted.
English language requirements	English language requirements: IELTS 6.5 (with no component below 5.5), or equivalent. GCSE English grade A-C.

Careers and further study

This programme has been designed in consultation with partners from industry to ensure you learn up-to-date computing knowledge required by employers across the industry. Graduates from the programme will be equipped to work in a variety of careers in the IT industry or progress to academic or research-orientated careers.

Suitable roles include Cloud Architect, Web Security Analyst, Software Engineer, Web or User Experience Designer and Developer, User Experience Designer and Developer, and roles in leadership and management in IT.

Example modules:

- Web Engineering
- UX/UI Theory, Experience and Development
- Web & Mobile Application Security
- Cloud Computing
- Internet of Things
- Mobile App Development
- Research Methods and Dissertation Preparation (0 credits)
- MSc Computer Science and Digital Technologies Project (60 credits)

All modules are 20 credits unless specified

Also available as a part-time programme. See page 83 for more information.

*This programme is due for revalidation in October 2021. Changes are anticipated to course content and modules. Please visit the online course page for the most up-to-date information.

PART-TIME POSTGRADUATE DEGREES



Our part-time postgraduate degrees are specifically designed to allow you to advance your career whilst accommodating work and personal life.

Build your network

Throughout your course you will be taught by experienced academics and practitioners, learning alongside like-minded working professionals from a wealth of industries and backgrounds, growing your professional network.

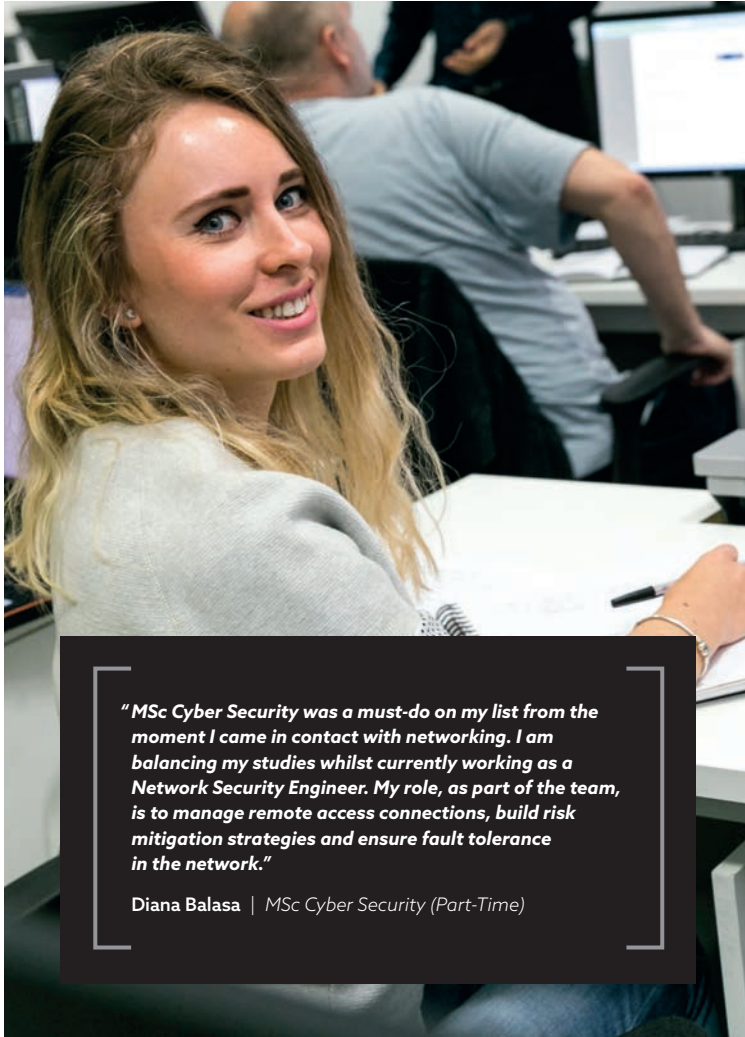
Change direction

Whether you are looking for a career change or to advance in your current role, our highly applied, practical programmes in project management, IT and technology can enable you to reach your career goals.

Accessible education

All applications are reviewed and approved by Northumbria University on an individual basis. We take into consideration your full education and working background and as such, we do accept students who do not have an undergraduate degree.

If you would like to contact us directly, please email pt.admissions@northumbria.ac.uk



"MSc Cyber Security was a must-do on my list from the moment I came in contact with networking. I am balancing my studies whilst currently working as a Network Security Engineer. My role, as part of the team, is to manage remote access connections, build risk mitigation strategies and ensure fault tolerance in the network."

Diana Balasa | MSc Cyber Security (Part-Time)

	MSc Computing and Technology	MSc Cyber Security	MSc Cyber Security Technology	MSc Web and Mobile Development Technologies
Duration	2 years (15 weekends)			2 years (16.5 weekends)
Tuition fee	UK: £8,400			UK: £7,350
Start dates	October, January, April, July			
Assessment	Coursework	Coursework & exams	Coursework	Coursework
Delivery method	Part-time, classroom based and blended learning			
Entry requirements	Minimum of a 2:2 honours degree or equivalent from a recognised university	Minimum of a 2:2 honours degree or equivalent from a recognised university in a related subject area	Minimum of a 2:2 (second class) honours or equivalent from a recognised university in any subject (except Cyber Security)	Minimum of a 2:2 honours degree or equivalent from a recognised university in a related subject
	Professional qualifications and experience may also be accepted			
English language requirements	GCSE English Grade 4/C, or equivalent			
Full-time available	Yes; see page 66	Yes; see page 68	Yes; see page 70	Yes; see page 78

MSc Information Security Management



The MSc Information Security Management aims to develop your technical competences in information assurance, incident management and information governance alongside the enhancement of your leadership skills and ability to contribute to the development of organisational information security strategies, board level risk and crisis management strategies.

The MSc will enable you to develop and enhance your learning capability and to make sense of the need to continually improve your professional practice and career development in the areas of Information Security and related management issues.

Duration	2 years (15 weekends)
Tuition fee	UK: £7,350
Start dates	October, January, April, July
Assessment method	Coursework
Delivery method	Part-time blended learning
Entry requirements	Minimum of a 2:2 (second class) honours or equivalent from a recognised university in any subject (except Cyber Security)
English language requirements	GCSE English Grade 4/C, or equivalent

How will I be taught and assessed?

You'll be taught using a range of methods such as workshops, tutorials, directed study and discussion forums, and led by experienced lecturers and academics who use their industry and research experience to demonstrate how the theories, tools, technologies and methods you will learn on the programme translate into real life situations.

Careers and further study

Increasingly, managers in a senior position find that they have become accountable for information security management in their organisation, particularly with GDPR, as the scope of their role creeps to include risk handling, management of cyber technologists and governance.

Example modules:

- Information Governance and Cyber Security
- Leadership in a Digital Age
- Information Assurance and Cyber Risk Management
- Contemporary Issues in Information Security Management
- Digital Forensics and Incident Management
- Research Methods for Professional Practice
- Academic Language Skills for Computer and Information Sciences (0 credits)
- Computing and Digital Technologies Project (60 credits)

All modules are 20 credits unless specified

MSc Programme and Project Management



Our MSc Programme and Project Management has been designed for those who have an undergraduate degree from any discipline, or suitable work experience, who wish to further develop knowledge, skills and career prospects in Programme and Project Management.

On this programme you will be exposed to theories and principles relating to financial and contractual management, leading teams including those that are geographically diverse, strategic leadership and the management of change, risk and opportunities.

How will I be taught and assessed?

You will be taught through a mix of lectures, workshops, simulations and seminars, totalling, to enable you to grow your knowledge of project management frameworks and skills. In addition, you will also be expected to engage in independent study involving directed and self-directed learning.

Assessments include critical report writing, practical exercises and research project work.

You are encouraged to draw on your own experience and link your teaching and assessments to your own context.

Duration	2 years (15 weekends)
Tuition fee	UK: £7,350
Start dates	October, January, April, July
Assessment method	Coursework
Delivery method	Part-time classroom based blended learning
Entry requirements	Minimum of a 2:2 (second class) honours or equivalent or professional qualifications that are equivalent to an honours degree or work experience may also be acceptable.
English language requirements	GCSE English Grade 4/C, or equivalent

Careers and further study

This course will open up opportunities in project management roles in many industries. Past Northumbria University graduates have gone on to work for multinational companies such as BAE Systems, Volvo Car Group, NHS, Siemens, IBM, Hewlett-Packard, Shell and Virgin Money.

This qualification is designed to accelerate your skills and competence in a range of job roles, including the specific roles of in programme and project management.

Example modules:

- Strategic Management
- Managing Programmes and Projects
- Research Methods for Professional Practice
- Financial and Contractual Management
- Leading Change, Risk and Opportunities
- Leading People and Teams
- Academic Language Skills (0 credits)
- Professional Practice in Project Management Project (60 credits)

All modules are 20 credits unless specified

MSc Strategic Leadership



Designed for those who wish to gain a postgraduate degree whilst balancing employment and a range of other commitments, this programme will develop your knowledge, skills and competence in the areas of personal and professional development, leadership, people management, innovation, finance and organisational strategy.

How will I be taught and assessed?

You'll be taught using a range of methods such as workshops, tutorials, directed study and discussion forums, and led by experienced lecturers and academics who use their industry and research experience to demonstrate how the theories, tools, technologies and methods you will learn on the programme translate in to real life situations.

Duration	2 years (14 weekends)
Tuition fee	UK: £7,350
Start dates	October, January, April, July
Assessment method	Coursework
Delivery method	Part-time classroom based blended learning
Entry requirements	Minimum 2:2 honours degree or equivalent academic or professional qualification and 3 years minimum work experience with supervisory responsibility.
English language requirements	GCSE English Grade 4/C, or equivalent

Careers and further study

This programme is specifically designed for those in employment and who are seeking to develop their careers as a strategic leader. As such significant emphasis is placed upon developing the competencies required to accelerate leadership career potential.

As a registered student on the programme, you will become an affiliate member of CMI throughout the duration of your studies and have access to all of their online resources. The programme is also mapped against the Chartered Management Institute (CMI) enabling you to also receive a CMI level 7 Diploma in Strategic Management and Leadership upon successful completion of the programme.

Example modules:

- Leader Identity, Leadership and Responsible Organisation
- Leading Organisational Strategy and Change
- Finance and Operations Leadership
- Future of Work and Organisation Development
- Leading Innovation in the Digital Organisation
- Management Inquiry and Data Analytics for Decision Making
- Academic and Professional Skills (0 credits)
- Management Investigation (60 credits)

All modules are 20 credits unless specified

ADMISSIONS AND SELECTION



Entry requirements

All of our entry requirements can be found on individual course pages and on our website. At Northumbria we accept a wide variety of academic and vocational qualifications for entry.

Advice and information

If you require any additional information about any of our courses, or need advice on entry requirements or the application process, please contact our Admissions team on:
+44 (0)20 8023 7118

Selection process

We will read your application in detail, looking very carefully at the information you have told us about yourself. We are interested in your academic qualifications and potential; work and life experiences; and your personal skills and qualities.

For further information on the selection process for a specific course, visit our website.

UK APPLICANTS

This is a quick guide to your application journey. For more information on applying to Northumbria, visit our website.

UK applicants follow the application process outlined overleaf. Once you have selected a course, you need to ensure that you have, or are working towards, the appropriate entry qualifications.

Undergraduate courses

To apply for an undergraduate programme at Northumbria University London, you should apply via UCAS at: ucas.com

The UCAS institution code for Northumbria University is NORTH N77.

Postgraduate courses

Applications for all postgraduate courses should be made direct to the University via our online application form. You can find this form on our website: northumbria.ac.uk/london-pg

While most of our courses do not set an exact deadline for applications, you are advised to apply early to secure your place and organise any student funding.

HOW DO YOU APPLY?

Choose the course you want to study

Upload all supporting documents and submit your application

Complete all required sections of the application form

ACCEPTING YOUR OFFER

Accept your offer

Review and meet any outstanding conditions

Wait for the decision about your application

CONGRATULATIONS YOU'RE COMING TO NORTHUMBRIA!

Await any further instruction from the University

Ensure your Finance and accommodation needs are arranged

WELCOME TO NORTHUMBRIA!
ATTEND ENROLMENT AND INDUCTION WEEK

INTERNATIONAL APPLICANTS

This is a quick guide on how to apply for a course at Northumbria. For more details visit our website.

Applications can be made to most undergraduate and postgraduate taught courses by using the apply

Apply Now buttons on our online course pages. For information on international entry qualifications visit: northumbria.ac.uk/london-applications

1

Completing your application

Once you have completed all sections of your application form you can either submit it directly to the Admissions Team or the Northumbria University Regional Office responsible for your country (see page 98 for details).

Please ensure you include all required supporting documents with your application as indicated by the guidelines.

2

Entry requirements

Full details about the academic entry requirements for each course can be found on the course information pages accessed via northumbria.ac.uk/london-courses



3

What happens next?

Once we receive your completed application, you should receive a decision by email within a few weeks. This will include any outstanding conditions you will need to meet to satisfy the conditions of your offer.



4

Accepting your offer

To accept your offer, you should complete and return an Offer Acceptance Form, and, unless your fees are being paid by a recognised financial sponsor, you will also need to pay a deposit and send us your Deposit Payment Form.

If your offer is conditional, please send us evidence that you have met the conditions of your offer as soon as possible so that we can confirm your place on your course.



5

Applying for a Visa

In order to apply for a Student Route visa (if applicable), you will need a Confirmation of Acceptance for Studies (CAS), which you can request on your Offer Acceptance Form once you have satisfied all conditions and paid any necessary deposit. Please note, in order for you to receive your CAS in time for your visa application and the start of your course, you will need to send your offer acceptance and CAS request to us by the advertised deadlines on our website.

You are required to inform us of any previous Student or Tier 4 (General) visas you may have previously held, or your current visa if you currently live in the UK.



6

Deadlines

We strongly recommend that you apply as early as possible to allow enough time to complete all the preparations you need. After receiving an offer it can take several months to arrange your finances and apply for a visa and it is important that you arrive in good time for our international enrolment session.

Further details on important dates can be found at northumbria.ac.uk/london-deadlines

CONTACT US



There are a range of ways you can get in touch. Please contact the relevant team via our channels.

Campus:
London Campus,
Northumbria University,
110-114 Middlesex Street,
London E1 7HT

 /NorthumbriaLondon

Student applications/admissions: london.admissions@northumbria.ac.uk

Part-time enquiries/admissions: pt.admissions@northumbria.ac.uk

Recruitment line (international students): +44 (0)20 8003 0673

Recruitment line (part-time students): +44 (0)20 8108 3750

OVERSEAS OFFICES

Thailand - Bangkok

Also responsible for Indonesia, Cambodia, Myanmar, Pakistan and Vietnam.

Northumbria University
Thailand Office, 283/46 Unit 1001-1,
10th Floor, Home Place Building,
Sukhumvit 55 (Thonglor 13),
Bangkok 10110, Thailand

T: (+66) 2044 6430
E: thaioffice@northumbria.ac.uk

P. R. China - Beijing

Northumbria University
China Office, Room 1610, Block B,
Winterless Center,
Jia 1, Xi Da Wang Road
Chaoyang District,
Beijing 100026, P.R.China

T: (+86) 10 6538 8135
F: (+86) 10 6538 8136
E: teresa.zhao@northumbria.ac.uk

Malaysia

Also responsible for Brunei, Hong Kong, the Philippines, Singapore, Taiwan and South Korea.

Northumbria University
Malaysia Office, A-8-3, 8th Floor,
Northpoint Building @ Midvalley City,
1 Jalan Syed Putra Utara,
59200 Kuala Lumpur, Malaysia

T: (+60) 3 2287 8080
F: (+60) 3 2287 8282
E: malaysiaoffice@northumbria.ac.uk

Nigeria

Northumbria University
Pathway College, 5 Mekong,
Wuse, Abuja, Nigeria

T: (+234) 9065 235553
E: Oghale.onyeagoro@northumbria.ac.uk

India

Also responsible for Bangladesh and Nepal.

308, Plot No-2, Sector-5,
Aggarwal Tower, MLU Plaza,
Dwarka, New Delhi – 110075, India

T: (+ 91) 999 959 8771
E: vikas.sharma@northumbria.ac.uk

Colombia

M: (+44) 7367 193 956
T: (+57) 312 361 9711
E: juliana.cortes@northumbria.ac.uk

Northumbria University and QA Higher Education are committed to being equal opportunities education providers and will therefore make reasonable adjustments for disabled applicants and students. All programmes included in this prospectus are delivered as part of a partnership between Northumbria University and QA Higher Education – a UK higher education provider. All of our programmes at the London Campus are validated by the University and taught by QA Higher Education and University staff.

The information given in this publication is accurate at the time of going to print in April 2021 and the University and QA Higher Education will use all reasonable efforts to deliver the programmes as described. The University and QA Higher Education reserve the right to withdraw or change the programmes or programme combinations included in this prospectus. These changes will only be made as a result of UK legal compliance, minimum student number requirements or for course validation reasons and applicants will be contacted by the University or QA Higher Education at the earliest opportunity in the instance of these changes occurring. Please check the website for up-to-date information on our programmes.

V1 04/21



**Northumbria
University**
NEWCASTLE

Newcastle • London • Amsterdam

northumbria.ac.uk/london