



# A Unique Student Experience

International Guide



**Northumbria University**  
NEWCASTLE





**One of the  
UK's best  
student cities**

Newcastle has been voted the  
best student city six times in  
the last nine years\*



**30,000  
Students**



**131  
Nationalities**



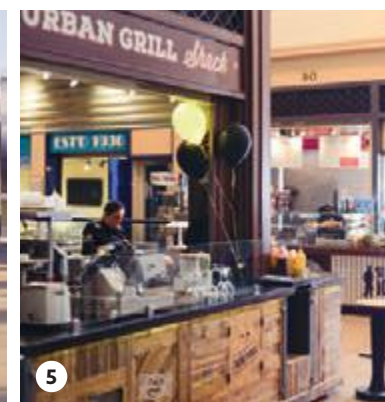
**3<sup>rd</sup> place in the  
International  
category at  
the Whatuni  
Student Choice  
Awards 2018**



**No.1  
Destination  
to visit in 2018\***



Consistently voted one of the best and most affordable places for students to live in the UK.

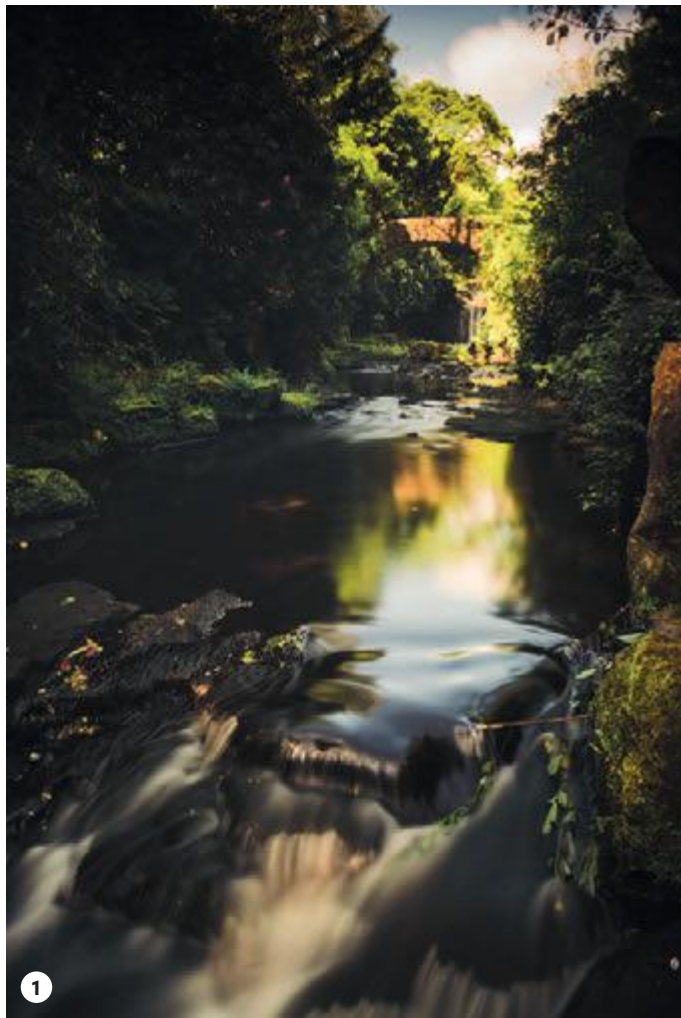


- 1. Grey's Monument and Grey Street**  
An iconic monument in one of the UK's best loved architectural streets
- 2. Coffee shops**  
So many places to meet and relax
- 3. Central Arcade**  
A beautiful triple-domed arcade in the centre of town, dating back to 1837
- 4. Intu Eldon Square Shopping Centre**  
A shopping paradise in the heart of the city
- 5. Grainger Market**  
A thriving, busy market

**"My favourite thing about Newcastle is the Quayside and city centre. There are great cafes and restaurants, as well as nightlife."**

Dobrina Koleva,  
BA (Hons) Marketing Management,  
Bulgaria

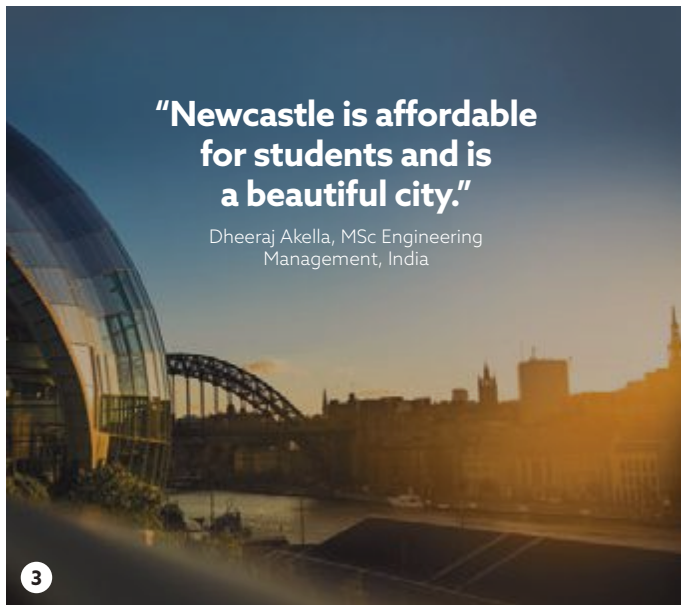




1



2



3

**"Newcastle is affordable  
for students and is  
a beautiful city."**

Dheeraj Akella, MSc Engineering  
Management, India



4



5



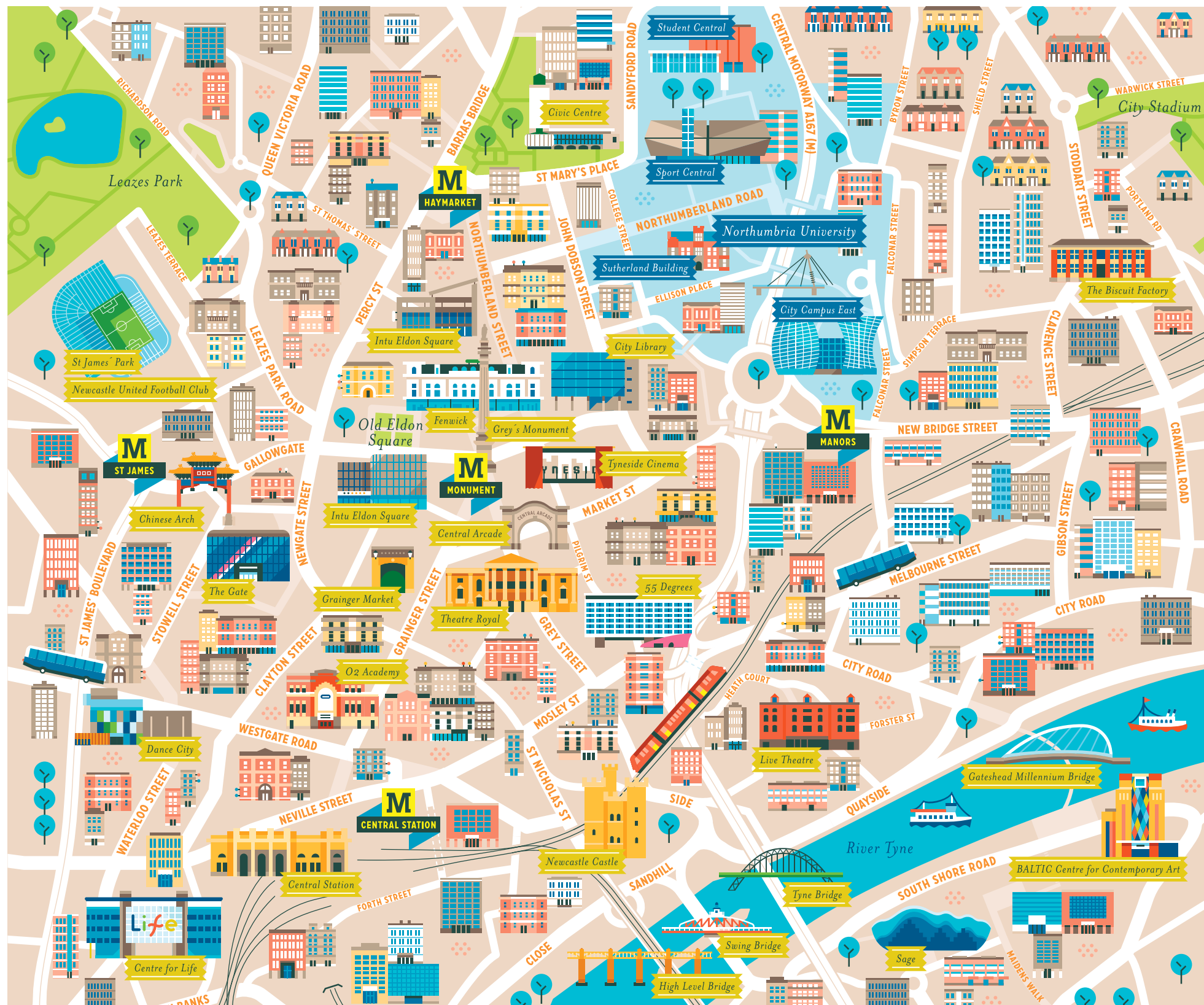
6

**From iconic landmarks  
to beautiful landscapes  
and world class culture,  
you'll never be short of  
things to do.**

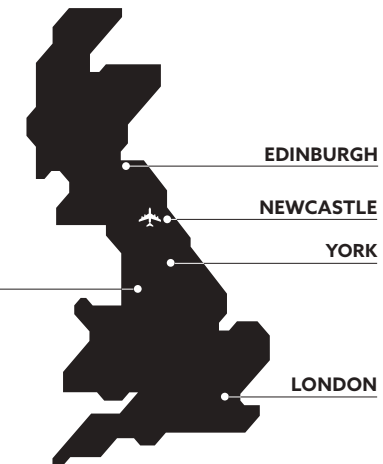
- 1. Jesmond Dene**  
A beautiful park in the heart  
of the city
- 2. Ouseburn Valley**  
Students admiring the  
Quayside view
- 3. Sage Gateshead**  
A landmark live music  
venue and concert hall

- 4. Chinatown**  
Revellers welcome  
in Chinese New Year
- 5. Newcastle Quayside**  
A busy day on the banks  
of the River Tyne
- 6. BALTIC Centre for  
Contemporary Art**  
One of our world-renowned  
cultural venues





Newcastle has its own international airport and national rail links, making it easy to explore the rest of the UK and Europe.



## THE UK BY RAIL



**LONDON**  
3 HOURS



**EDINBURGH**  
1H 30M



**YORK**  
1 HOUR

## EUROPE BY AIR



**AMSTERDAM**  
1H 20M



**BARCELONA**  
2H 35M



**BERLIN**  
2H 10M



**BRUSSELS**  
1H 25M



**COPENHAGEN**  
1H 35M



**DUBLIN**  
1H 10M



**GENEVA**  
2H 05M



**PARIS**  
1H 50M

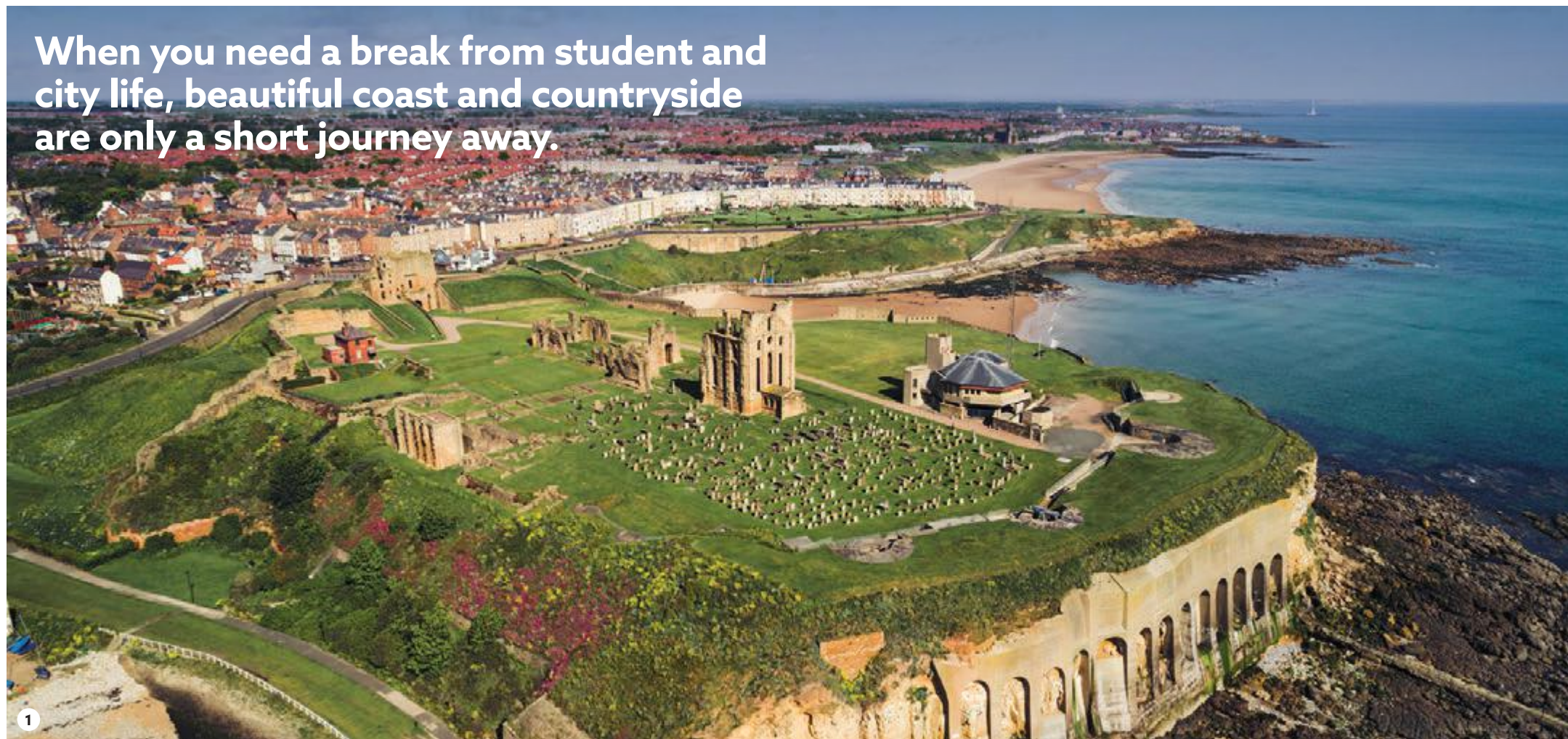


**ROME**  
3H 05M

Scale  
10 minute walk



When you need a break from student and city life, beautiful coast and countryside are only a short journey away.



1

**1. Tynemouth Castle and Priory**

A stunning view of the 2000 year old settlement, overlooking the North Sea and River Tyne

**2. Cullercoats Bay**

Beautiful seascape just minutes from the city centre

**3. Tynemouth**

A sunny stroll along the pier

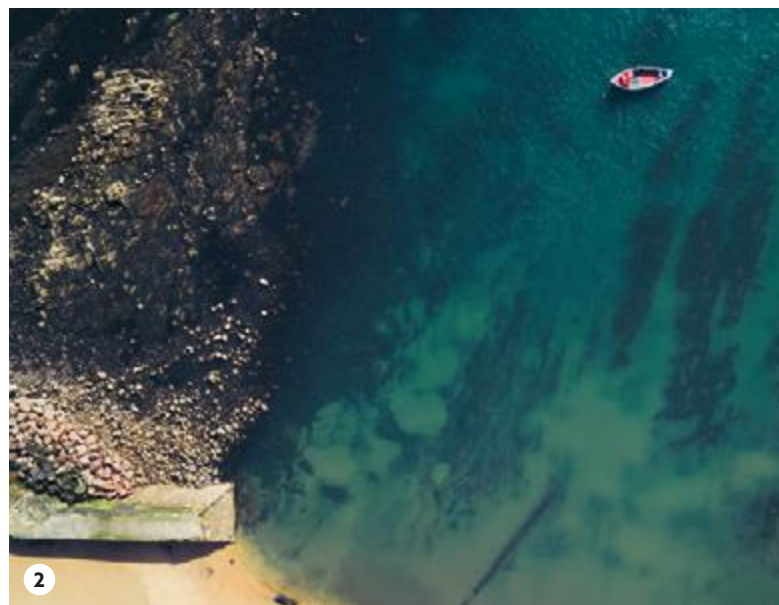
**4. St. Mary's**

**Lighthouse**

Climb the 137 steps to the top for the most spectacular views of the North East coast

**"My favourite thing to do on a weekend is probably visiting Tynemouth and going for fish and chips by the beach."**

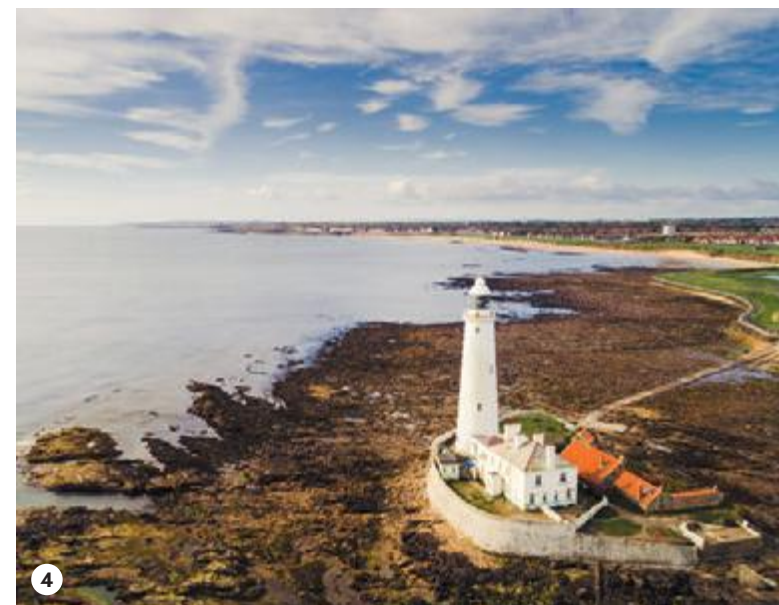
Veronica de Gongora ,  
BA (Hons) Fashion Design  
and Marketing, Spain



2



3



4





**From world heritage sites to majestic castles, our scenery is simply stunning.**

**1. Hadrian's Wall**

Part of Northumberland National Park — a World Heritage Site

**2. Durham Cathedral**

A millennium of history resides at this World Heritage Site

**3. Angel of the North**

World famous Anthony Gormley sculpture in Gateshead

**4. Alnwick Castle**

The home of the Duke of Northumberland, made famous as 'Hogwarts' in the Harry Potter film franchise





## A UK top 50 University

Complete University Guide 2020  
and Guardian University League Tables 2019

## Shortlisted for University of the year

Times Higher Education Awards 2017

## Top 50 in the UK for research power

2014 Research Excellence Framework

## Silver for teaching excellence

Teaching Excellence Framework 2017

## No. 1 in the UK for graduate start-ups three years running

Based on estimated turnover (HEBCIS 2015/16, 2016/17 & 2017/18)



**"Facilities at the University are top class, Northumbria University is investing in the future."**

Timothy Tan, MSc Business  
with International  
Management, Malaysia



Using our education, research and campuses to support the Sustainable Development Goals.

Discover more at  
**[northumbria.ac.uk/sustainability](http://northumbria.ac.uk/sustainability)**



**Four stars overall in the OS stars University ratings**



**Our amazing campuses and first class facilities make us one of the biggest, most advanced and exciting universities in the UK.**



1

**A £52 million investment in our campus has created two new state of the art buildings for Computer & Information Sciences and Architecture & Built Environment students.**



Find out more at  
[northumbria.ac.uk/virtualtour](http://northumbria.ac.uk/virtualtour)

1. Student Central  
2. School of Architecture



2



Our city centre campus in the heart of Newcastle.



#### Coach Lane Campus

Our Coach Lane campus is a short bus journey from the City Campus and is home to education, nursing, healthcare and social work students. It hosts a Clinical Skills Centre, cafés and sports facilities and links to the city centre campus via a free bus.

**"The facilities are top-notch. The 24 hour library caters for different learning styles of students and has a quiet study area."**

Rafael Antonio David,  
MSc International Sport Management,  
Philippines



# Amsterdam campus

**Northumbria University has expanded its international presence through a partnership agreement with Amsterdam University of Applied Sciences (AUAS).**



Amsterdam is one of mainland Europe's most dynamic and beautiful cities. With an easy-going atmosphere and rich history, Amsterdam is a great place to visit and study. World class museums, theatre, live music, bars and restaurants mean there is always something new to discover. Northumbria's collaboration with AUAS allows students to study a UK accredited Masters programme in this fantastic city – **MSc Project Management, MSc Business with International Management or MSc Business with Business Analytics.**

Undergraduate students will also be able to study in Amsterdam as part of the **Year in International Business**. In this extra year, your first semester will be in Newcastle



developing applied business theory. The second semester is delivered in Amsterdam where you will undertake a real-world, Group Business Consultancy Project.

[northumbria.ac.uk/amsterdam](http://northumbria.ac.uk/amsterdam)

# London campus



**Northumbria University also has a London campus, which allows students to combine our academic excellence with a campus in the UK's capital city.**

The University's central London campus offers a range of programmes in areas such as Business, Computing, Cyber Security and Project Management. Ideally situated just minutes away from Liverpool Street Station, this offers you an excellent base from which to take full advantage of all that studying in one of the world's leading cities has to offer, including work experience and networking opportunities.

[london.northumbria.ac.uk](http://london.northumbria.ac.uk)



With an award winning students' union, over 130 student societies, live music venues and plenty of places to eat and drink, Northumbria has it all.



1



2



3



4

1. **Habita**  
One of the many social venues on campus
2. **Students' Union**  
Live music venue
3. **Longsands Beach**  
Students enjoying a sunny day at the beach
4. **Tynemouth village**  
So much to see and do, on campus, in the city and beyond

Our Students' Union hosts over 30 gigs a year

## The Top Student City in the UK

Source: The Student Hut 2018

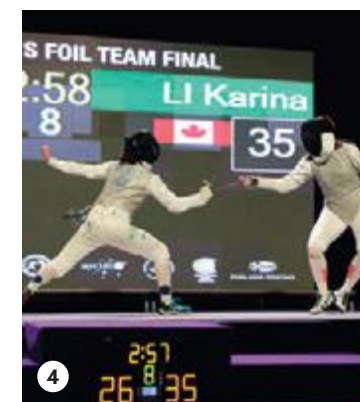
**"I've been involved in volunteering events such as RAG (Raise and Give). Helping people is always a good thing to do. Participating in these events has been a great experience and has made me a lot of friends."**

Sandean Fernandes,  
BSc Mechanical Engineering, India

Find out more at  
[mysu.co.uk](http://mysu.co.uk)



We have numerous opportunities for you to get involved in sport, whatever your level of ability.



1. Northumbria Women's Football beat Loughborough in a thrilling final to lift the national cup
2. **Swimming Pool**  
25m swimming pool within Sport Central at city campus
3. **BUCS Super Rugby**  
Northumbria Men compete in the national student Super League playing all home games at Kingston Park, home of Newcastle Falcons.
4. **Junior commonwealth Fencing**  
Our on-campus sporting facilities host many outstanding events

Our city-centre based £30 million Sport Central boasts state-of-the-art facilities including a six-lane 25m swimming pool, a running track, squash courts, sports halls and a fitness centre.

Top 5 in UK Varsity Sport in Soccer, Basketball, Volleyball, Rugby Union and Rugby League

Winners of the 2019 National Volunteer Award at the Sport & Recreation Alliance Community Awards

Our competitive sports teams are ranked Top 15 in the UK in the British Universities & Colleges Sport League (BUCS)

"I've loved every minute, from representing the University in BUCS, being a volunteer and intern, spending a summer coaching in Zambia to supporting our teams student sport president."

Brogan O'Connor,  
BSc (Hons) Applied Sport  
and Exercise Science, UK

Find out more at  
[northumbriasport.com](http://northumbriasport.com)

Northumbria  
University Sport

@northumbriasport

northumbriaunisport



# Accommodation

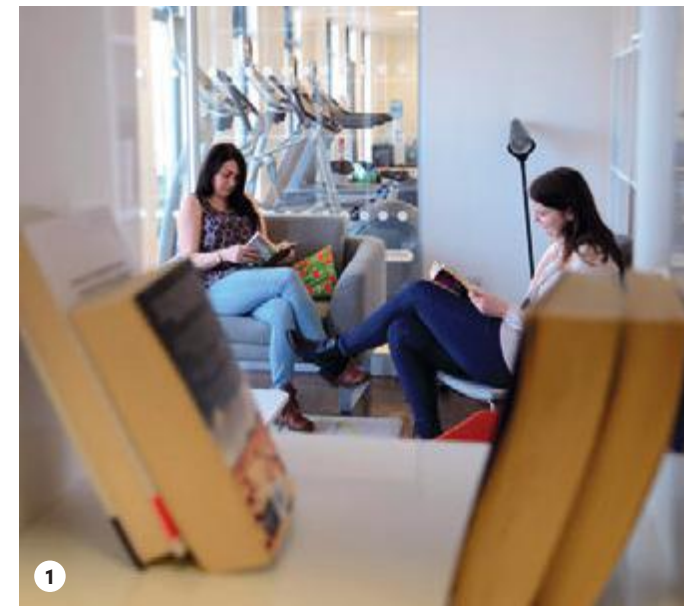


Scale

10 minute walk

**With accommodation on and off campus, you're never more than 20 minutes walk from the city campus.**

1. Camden Court
2. Claude Gibb Hall
3. Glenamara House
4. Lovaine Hall & Flats
5. Liberty Quay
6. New Bridge Street Residence
7. Bryson & Marshall
8. Trinity Square
9. Liberty Central
10. Winn Studios
11. Rosedale Court



1. **Relaxation between studies**  
Students reading on campus
2. **Student bedroom**  
An example of a one-bedroom halls of residence
3. **Student kitchen**  
An example of a shared student kitchen

**You can book accommodation as soon as you make Northumbria your firm choice**

**We guarantee accommodation for all first year Northumbria University students**

**24 hour security**

**All of our residences are within walking distance of the campus or have convenient transport links**

**"The best thing about living in halls is meeting new people from different backgrounds and cultures."**

Kong Lim,  
Bar Professional Training  
Course (BPTC), Malaysia

**"Trinity Square definitely stood out the most to me when applying for accommodation. It's nice modern accommodation with good facilities and social areas, and also located above a shopping high street which includes a 24 hour Tesco's, Vue Cinema, Nando's and much more."**

James Bingham  
BA (Hons) Business with Financial Management



Find out more at  
[northumbria.ac.uk/accommodation](http://northumbria.ac.uk/accommodation)





**#TakeOnTomorrow**

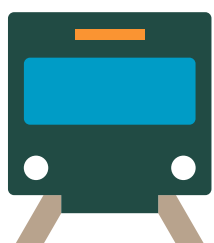


**Newcastle is one of the most affordable places for students to live in the UK. Here's a quick guide to help you plan your finances.**



**Accommodation**  
£70 – £130 per week

Northumbria University has some of the most affordable student accommodation in the UK, with high speed Wi-Fi and bills included as standard.



**Transport**  
Bus £1.50 – £3  
Metro £2 – £4  
Train £6+

You can walk to most places in the city centre, but if you want to explore, our public transport is budget friendly.



**Food**

There are a number of low cost supermarkets near both the campus and our accommodation. Grainger Market in the city centre has a range of low cost, fresh produce. There are also a large number of international food stores offering familiar products, but expect to pay a higher price than back home for some things.

**Tip:** Cook meals with friends and flatmates to share the cost and socialise.

**NU Sport Central**  
£24 per month

Our £30 million state of the art sports facility offers students the chance to get fit, have fun and go the extra mile. Whether you're a talented athlete or an enthusiastic beginner, Northumbria Sport has something for everyone. Students can get involved in sport at club and league level as well as gain valuable experience through our volunteering and internship programme.



**Mobile Phone**  
£10 – £45 per month

These can range in price but a sim only deal can cost around £10 per month. Shop around for the best deal!

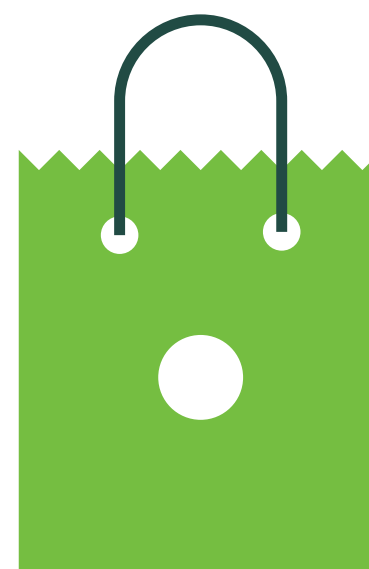
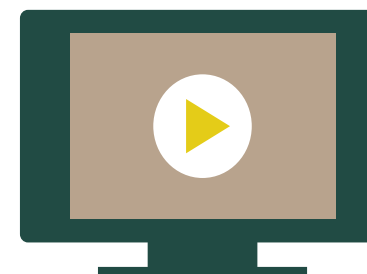
**Cinema Ticket**  
£6 – £11

These can range in price but there are many deals to be had if you shop around.



**TV Licence**  
£13 – £25 per month

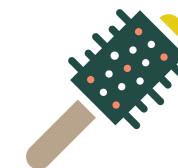
If you have a TV you need a licence by law. You'll usually pay for your first licence over six months at around £25.10 a month. After this, you pay for your next licence in 12 monthly instalments of around £12.56.



**Shopping**

Newcastle has a vast array of retail outlets to suit all budgets. We have budget friendly markets and high street shops to high-end department and designer stores and everything in-between!

**Health & beauty**  
£30 – £60 per month



**Eating out**  
£7 – £11

Newcastle has a wide range of budget friendly places to eat. A one course meal in an inexpensive restaurant will typically be around £7 – £11.



**Drinks**  
Soft drinks £1.50  
Wine £2.50 – £5.00  
Beer £2.50 – £4.00



**Tip:** Buy an NUS card for around £12 and you can save 10–20% in many places.



**Enhance your employability  
by gaining professional work  
experience while you study.**



- 1. Northumbria University Congregation Ceremony**  
All the hard work has paid off, a time to celebrate our students' achievements
- 2. Business Clinic**  
State-of-the-art premises in the heart of the city, enabling business students to participate in a 'consultancy firm' to provide advice for real clients

**Newcastle Business School was the first university in Europe to gain double accreditation from AACSB**

The Association Of Advanced Collegiate Schools Of Business

**7th in the UK for graduate employment**

Destination of Leavers from Higher Education 2016/17

**50 professional bodies accredit our courses**

**430 employers sponsor our programmes**



## How we can help your future:

- Placements and internships
- Accreditations and partnerships
- Live projects with clients and customers
- Dedicated careers and Employment Service support
- Student and graduate enterprise

Some of the national and international businesses that offer placements and internships to our students:



**"I did a three month summer placement at the Institute of Genetic Medicine at Centre for Life, Newcastle. I used all the molecular biology techniques I learned in class and also learnt new techniques that I think will be very useful in my professional life."**

Leonardo Amorim,  
BSc Forensic Science, Brazil



## Sir Jonathan Ive KBE

BA (Hons) Design for Industry

Chief Design Officer at Apple overseeing the Apple Industrial Design Group and also providing leadership and direction for the Human Interface software teams. He is credited as being the designer of the MacBook Pro, iMac, MacBook Air, Mac mini, iPod, iPod Touch, iPhone, iPad, iPad Mini, Apple Watch and iOS 7. In 2012 he was appointed Knight Commander of the Order of the British Empire for services to design and enterprise.



## Neil Marshall

BA (Hons) Media, Culture & Society

Film director, editor and screenwriter best known for his work on Game of Thrones for which he was nominated for a Primetime Emmy Award for Outstanding Directing of a Drama Series.



## Jules Quinn

BA (Hons) Fashion Marketing

Named in the Forbes 30 Under 30 Europe list—in retail and commerce, North East entrepreneur Jules' company The\*Teashed has continued to grow from strength to strength, since it launched in 2011. Her teas are available online and through high street retailers such as Fenwick and John Lewis with her newer product Popaball being sold in Fenwick, Lakeland and Selfridges.



## Victoria Pendleton CBE

BSc Sport & Exercise Science

One of Britain's most successful female track cyclists and Olympic gold medallist. She was appointed Member of the Order of the British Empire (MBE) in 2009 and Commander of the Order of the British Empire (CBE) in 2013 for services to cycling.



## Tim Brown

BA (Hons) Design for Industry

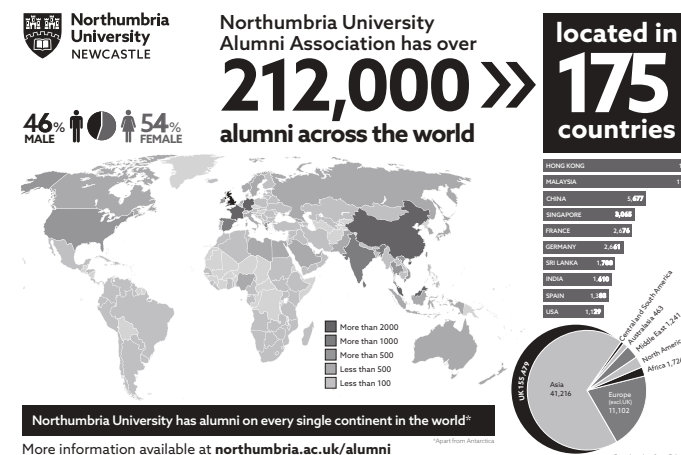
Chief Executive of IDEO USA, one of the world's leading design consultancies. Tim has earned numerous design awards and has exhibited work at the Axis Gallery in Tokyo, the Design Museum in London and the Museum of Modern Art in New York. He also advises senior executives and boards of global Fortune 100 companies and writes for the Harvard Business Review.



## Dr Tshering Lama

Health Development Studies, MA Public Health & PhD Telemedicine

Dr Tshering Lama came to Northumbria University in 2002, the first student from the Hyolmo ethnic group in Nepal to go to a British university. He stayed on to take MA in Public Health and then a PhD in Telemedicine to improve healthcare in remote parts of his home country. Dr Lama, is now the director of the independent child rights organisation Childreach Nepal.







**Start your journey in the UK to a world-class medical degree and gain a global perspective on modern medicine.**

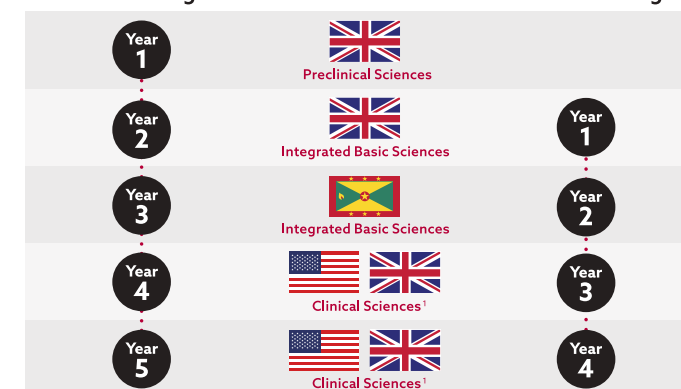
St George's University, Grenada

Thanks to a unique partnership with Northumbria University, St. George's University (SGU) gives international students the opportunity to earn a Doctor of Medicine (MD) and complete up to 50% of your degree in the United Kingdom. You will begin your studies at Northumbria University in Newcastle upon Tyne and will undergo one or two years of study, dependent upon your enrolment in either the four- or five-year program, leaving Northumbria with a stand-alone Certificate in Higher Education or a Diploma in Higher Education in Medical Sciences. You will

then complete one year of integrated basic sciences at St George's University in Grenada, which will lead on to your clinical rotations across the globe. St George's University is the third largest source of physicians in the US Healthcare system\*, with over 16,000 physicians having graduated from St George's University over the last 40 years. St George's University is the number one provider into first-year US Residency positions for the last 10 years combined, with over 950 US residencies in 2019...and counting.

\* According to US Medical Regulatory Trends and Actions 2018 as published by the Federation of State Medical Boards.

## 5-Year MD Program



<sup>1</sup> Students in the 5-year program will spend 1 year in preclinical, 1 year in basic sciences and may do 6 months of clinical rotations in the UK. Students in the 4 year program will spend 1 year in basic sciences and up to one year in the UK. Clinical rotations may not be done in the UK for the last six months of year four/five.

## 4-Year MD Program



# 97%

**USMLE pass rate for all first-time test takers from the SGU/NU four-year programme**

# 78%

**of 2018-2019 SGU/NU entering students received a scholarship**

# 91%

**of all eligible SGU/NU graduates who applied for a US residency position in 2018 obtained one within one year of graduation**

# 1238

**MD graduates have participated in the SGU/NU four-year programme**



Find out more at  
[northumbria.ac.uk/medicine](http://northumbria.ac.uk/medicine) OR [sgu.edu/sgunu](http://sgu.edu/sgunu)



**We offer the chance to study in another country as part of your Northumbria experience, for a whole semester or even a full academic year, in countries as diverse as Spain or South Korea, Canada or China.**



**"BRB. going to South Korea."**

Dexter Mudondo studying International Business Management at Korea University, South Korea



**"When you travel and you eat the delicacies."**

Ben Walker studying Marketing Management at Université Claude Bernard Lyon, France

**"Those blue skies of NYC."**

Laura Whittle studying International Business Management at The College of New Jersey, USA



**"The World is too beautiful to not explore."**

Daniel Siddle studying Business Management at Deakin University, Australia



**"Reflecting on a once in a lifetime experience"**

Norbert Durko studying Business with Marketing Management at Kedge Business School in France



**"Don't be afraid to soar to new heights!"**

Victoria Sanson studying International Business Management at The College of New Jersey, USA

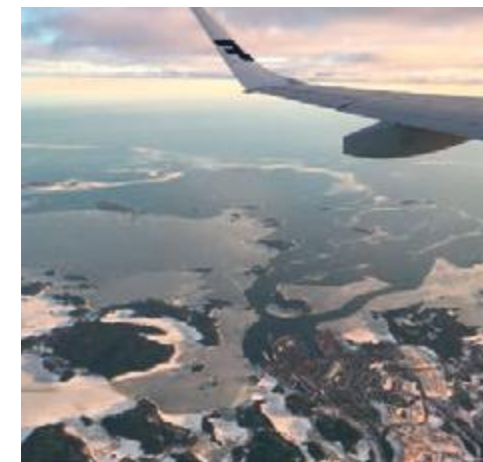


**"Remember exploring the country you make home for a semester or two is all part of the study abroad experience."**

Millie Price studying Food Science & Nutrition at Edith Cowan University, Perth, Australia

**"Touching down for the year ahead."**

Matt Wheeler studying Business with International Management at Metropolia Ammattikorkeakoulu, Finland



**"On top of the world!"**

Amber Turley studying English Language Studies at Georgia State University.



**4,500 students currently studying abroad**

**"The experience of studying and working abroad was priceless. I'd recommend it to everyone."**

Marius Nazare, BA (Hons) International Business Management, UK



nustudentsabroad





#### Pre-sessional

6 week or 11 week options to improve your English.

#### In-sessional

Additional support from dedicated tutors once you begin your studies to develop your academic language skills.

#### UniLang

Additional classes in a range of other languages, useful if you are spending the summer in Europe or studying abroad as part of your course.

Languages include:

- French
- German
- Spanish
- Italian
- Japanese
- Mandarin Chinese.

#### Northumbria International Summer School

Northumbria International Summer School is open to EU and international undergraduate students.

The three week programme includes field trips and visits around the region to sample some of our amazing culture and heritage.

Our English and Study Skills programme helps you improve your English language level and your academic skills before starting your main programme. We have intakes in September, January or June and each Semester is 11 weeks in length. We also have a 6 week programme in July. The number of semesters you need to take will depend on your current IELTS level and the IELTS requirements for your academic programme.

Accredited by the  
**BRITISH COUNCIL**  
for the teaching  
of English in the UK

# Foundation and pre-masters

We have a range of Foundation and Pre-Masters Pathway Programmes which are designed to bridge the gap between your current academic and English level and your chosen route of study.



#### Undergraduate

##### University Foundation Year programmes

If you are an EU student and have met our English language requirements but are unable to meet the academic requirements for direct entry, we have a range of foundation programmes to suit you. Visit our website to find out more.

##### International Foundation Programme

If you are a non-EU international student who does not meet the academic or English language requirements for an undergraduate degree, this 2 semester course can help. This multi-disciplinary programme provides progression to a wide range of degree programmes at Northumbria University.

You can choose one of the pathways:

- Social Sciences and Humanities
- Art, Design and Media
- Business
- Engineering.

You will also study core modules in:

- Global Studies and Grammar
- Reading and Critical Analysis
- Intercultural Communication
- Essay and Report Writing.



#### Postgraduate

##### Graduate Diploma in Business

This course will support you in managing the transition into our Masters in Business programmes. The diploma offers integrated English language development for business as well as modules which are designed to give you a detailed understanding and knowledge of how business works.

##### Graduate Certificate in Business

This certificate course is designed to help students gain the skills, knowledge and confidence needed for successful Masters-level study. Students will be supported in managing the transition onto Masters programmes at Northumbria University.



Discover more at  
[pathway.northumbria.ac.uk](https://pathway.northumbria.ac.uk)



<b>Applied Sciences</b> <ul style="list-style-type: none"><li>• Applied Sciences (Foundation Year)</li><li>• Biochemistry</li><li>• Biology</li><li>• Biology (Biotechnology)</li><li>• Biology (Neurobiology)</li><li>• Biomedical Science</li><li>• Chemistry</li><li>• Criminology and Forensic Science</li><li>• Food Science and Nutrition</li><li>• Food Science and Nutrition (Human Nutrition)</li><li>• Forensic Science</li><li>• Medicine Pathway Programme</li></ul>
<b>Architecture and Built Environment</b> <ul style="list-style-type: none"><li>• Architecture</li><li>• Architecture (MArch)</li><li>• Architecture and Built Environment (Foundation Year)</li><li>• Building Surveying</li><li>• Interior Architecture</li><li>• Quantity Surveying</li><li>• Real Estate</li></ul>
<b>Arts</b> <ul style="list-style-type: none"><li>• Animation</li><li>• Art (Foundation Year)</li><li>• Drama</li><li>• Drama (Applied Theatre)</li><li>• Drama (Scriptwriting)</li><li>• Drama (Acting and Performance)</li><li>• Film and TV Production</li><li>• Film and Television Studies</li><li>• Fine Art</li></ul>

<b>Business</b> <ul style="list-style-type: none"><li>• Accounting</li><li>• Accounting and Finance (Top-up course)</li><li>• Business (Foundation Year)</li><li>• Business (Top-up course)</li><li>• Business with Law (Top-up course)</li><li>• Business and Finance (Top-up course)</li><li>• Business and International Management (Top-up course)</li><li>• Business and Marketing (Top-up course)</li><li>• Business Management</li><li>• Business with Accounting</li><li>• Business with Economics</li><li>• Business with Entrepreneurship</li><li>• Business with Financial Management</li><li>• Business with Human Resource Management</li><li>• Business with International Management</li><li>• Business with Logistics and Supply Chain Management</li><li>• Business with Management</li><li>• Business with Marketing Management</li><li>• Business with Tourism Management</li><li>• Entrepreneurial Business Management (WBL*)</li><li>• Finance and Investment Management</li><li>• Human Resource Management</li><li>• International Banking and Finance (Top-up course)</li><li>• International Business Management</li><li>• International Business Management with French</li><li>• International Business Management with Spanish</li><li>• International Hospitality and Tourism Management (Top-up course)</li><li>• Leadership and Management</li><li>• Logistics and Supply Chain Management (Top-up course)</li><li>• Marketing Management</li><li>• Tourism and Events Management</li></ul>
<b>Computer and Information Sciences</b> <ul style="list-style-type: none"><li>• Applied Computing (top-up course)</li><li>• Computer and Digital Forensics BSc/MComp</li><li>• Computing and Information Technology (Foundation Year)</li><li>• Computer Networks and Cyber Security BSc/MComp</li><li>• Computer Science BSc/MComp</li><li>• Computer Science with Artificial Intelligence BSc/MComp</li><li>• Computer Science with Games Development</li><li>• Computer Science with Web Development BSc/MComp</li><li>• Information Technology Management for Business</li></ul>
<b>Design</b> <ul style="list-style-type: none"><li>• 3D Design</li><li>• Design for Industry</li><li>• Fashion</li><li>• Fashion Communication</li><li>• Fashion Design and Marketing</li><li>• Graphic Design</li><li>• Interaction Design</li><li>• Interior Design</li></ul>

<b>English, History, American Studies and Music</b> <ul style="list-style-type: none"><li>• American Studies</li><li>• English Language Studies</li><li>• English Language and Literature</li><li>• English Literature</li><li>• English Literature and Creative Writing</li><li>• English Literature and History</li><li>• English Literature and American Studies</li><li>• History</li><li>• History and American Studies</li><li>• History and Politics</li><li>• Humanities (Foundation Year)</li><li>• Music</li><li>• Music (Foundation Year)</li></ul>
<b>Foundation and English Language courses</b> <ul style="list-style-type: none"><li>• Foundation Year Programmes</li><li>• Graduate Certificate</li><li>• Graduate Diploma</li><li>• International Foundation Programme</li><li>• Pre-sessional courses</li><li>• Summer school pre-sessional courses</li></ul>
<b>Geography and Environmental Sciences</b> <ul style="list-style-type: none"><li>• Environmental Science</li><li>• Geography BA (Hons)</li><li>• Geography BSc (Hons)</li><li>• Geography and Environmental Science (Foundation Year)</li><li>• Physical Geography BSc (Hons)</li><li>• Human Geography MGeog</li></ul>
<b>Healthcare, Public Health and Wellbeing</b> <ul style="list-style-type: none"><li>• Midwifery Studies (pre-registration)</li><li>• Nursing Science (top-up course)</li><li>• Occupational Therapy</li><li>• Physiotherapy</li></ul>
<b>Law</b> <ul style="list-style-type: none"><li>• Common Professional Examination GDL/CPE</li><li>• Graduate Diploma in Law</li><li>• LLB (Hons) Law</li><li>• LLB (Hons) Law (Foundation Year)</li><li>• M Law Exempting</li></ul>
<b>Mathematics</b> <ul style="list-style-type: none"><li>• Mathematics BSc/MMath</li><li>• Mathematics and Physics (Foundation Year)</li></ul>
<b>Mechanical and Construction Engineering</b> <ul style="list-style-type: none"><li>• Automotive Engineering BEng/MEng</li><li>• Civil Engineering BEng/MEng</li><li>• Construction Engineering Management</li><li>• Engineering (Foundation Year)</li><li>• Mechanical and Automotive Engineering BEng/MEng</li><li>• Mechanical Design and Engineering (Top-up course)</li><li>• Mechanical Engineering BEng/MEng</li></ul>

<b>Nursing, Midwifery and Health</b> <ul style="list-style-type: none"><li>• Midwifery</li><li>• Nursing Studies /Registered Nurse (Adult)</li><li>• Nursing Studies/Registered Nurse (Child)</li><li>• Nursing Studies/Registered Nurse (Learning Disabilities)</li><li>• Nursing Studies/Registered Nurse (Mental Health)</li><li>• Occupational Therapy</li><li>• Operating Department Practice</li></ul>
<b>Physics and Electrical Engineering</b> <ul style="list-style-type: none"><li>• Electrical and Electronic Engineering BEng/MEng</li><li>• Electronic Design Engineering (Top-up course)</li><li>• Engineering (Foundation Year)</li><li>• Mathematics and Physics ( Foundation Year)</li><li>• Mobile Communications Engineering (Top-up course)</li><li>• Physics BSc/MPhys</li><li>• Physics with Astrophysics BSc/MPhys</li></ul>
<b>Psychology</b> <ul style="list-style-type: none"><li>• Psychology</li><li>• Psychology (Foundation Year)</li><li>• Psychology (Business)</li><li>• Psychology (Clinical)</li><li>• Psychology (Experimental)</li><li>• Psychology (Forensic)</li><li>• Psychology (Health)</li><li>• Psychology with Criminology</li></ul>
<b>Social Sciences</b> <ul style="list-style-type: none"><li>• Criminology</li><li>• Criminology and Sociology</li><li>• International Relations and Politics</li><li>• Journalism and English Literature</li><li>• Mass Communication</li><li>• Mass Communication and Advertising</li><li>• Mass Communication with Business</li><li>• Mass Communication with Public Relations</li><li>• Media and Journalism</li><li>• Professional Policing</li><li>• Sociology</li><li>• Social Science (Foundation Year)</li></ul>
<b>Social Work, Education and Community Wellbeing</b> <ul style="list-style-type: none"><li>• Childhood and Early Years Studies</li><li>• Guidance and Counselling</li><li>• Integrated Health and Social Care</li><li>• Primary Education</li><li>• Social Work</li></ul>
<b>Sport, Exercise and Rehabilitation</b> <ul style="list-style-type: none"><li>• Applied Sport and Exercise Science</li><li>• Applied Sport Science with Coaching</li><li>• Physiotherapy</li><li>• Sport Coaching</li><li>• Sport Development</li><li>• Sport Development and Management (Foundation Year)</li><li>• Sport, Exercise and Nutrition</li><li>• Sport Management</li></ul>

 Discover more at [northumbria.ac.uk/coursesearch](https://northumbria.ac.uk/coursesearch)

\* Work-based learning.  
Not open to students on a Tier 4 visa  
  
Courses correct at time of going to print.  
Check website for up-to-date information.



Distance Learning for these courses

Applied Sciences

- Biotechnology
- Forensic Science
- Medicine Pathway Programme
- Microbiology
- Nutritional Science

Architecture and Built Environment

- Architecture
- Interior Architecture
- Real Estate
- Real Estate (International)

Architecture and Built Environment (Distance Learning)

- Surveying (Quantity Surveying)
- Surveying (Building Surveying)
- Surveying (Real Estate)
- Surveying (Housing)

Arts

- Animation
- Art
- Conservation of Fine Art
- Creative and Cultural Industries Management
- Fine Art
- Preventive Conservation\*
- Theatre and Performance

Business

- Business with Business Analytics^ \*\*\*
- Business with Entrepreneurship^ \*\*
- Business with Financial Management^ \*\*
- Business with Hospitality and Tourism Management^ \*\*
- Business with Human Resource Management^ \*\*
- Business with International Management^ \*\* \*\*\*
- Business with International Management and Finance
- Business with International Management and Marketing
- Business with Logistics and Supply Chain Management^
- Business with Management^
- Business with Management and Finance
- Business with Management and Marketing
- Business with Marketing Management^ \*\*
- Coaching MA/PG Diploma/PG Cert
- Digital Marketing\*\*
- Entrepreneurship
- Finance
- Forensic Accounting
- Global Logistics, Operations and Supply Chain Management^
- Human Resource Management and Development
- International Business Management^
- International Finance and Investment^
- International Financial Management^
- Leadership and Management
- MBA\*
- Marketing
- Multidisciplinary Innovation
- Professional Accounting

Computer and Information Sciences

- Computer Science
- Computing and Technology†
- Cyber Security Technology†
- Advanced Computer Science
- Cyber Security†
- Information Security Management†
- Professional Practice in Computing and IT†
- Web and Mobile Development Technologies†
- Information Science (Data Analytics)
- Information Science (Library Management)

Design

- Communication Design
- Design\*
- Design Management†
- Luxury Brand Management†
- Multidisciplinary Innovation

Geography and Environmental Sciences

- Disaster Management and Sustainable Development
- Environmental Health
- Environmental Monitoring, Modelling and Reconstruction
- Safety, Health and Environmental Management

History, English and Creative Writing

- Applied Linguistics for TESOL
- Creative Writing
- English Literature
- History\*
- TESOL\*

Law

- Advanced Legal Practice\*
- Bar Professional Training Course (BPTC)
- Data Protection Law and Information Governance\*
- Employment Law in Practice\*
- Graduate Diploma in Law (GDL)\*
- Information Rights Law and Practice\*
- Law (International Commercial Law)
- Law (International Criminal Justice)
- Law (Cyber Law)
- Law (Space Law)
- Legal Practice (LPC)
- LLM in Bar Professional Training
- LLM in Legal Practice
- Medical Law\*
- Mental Health Law\*
- Professional Practice in Mental Health Law\*

Mathematics, Physics and Electrical Engineering

- Electrical Power Engineering
- Microelectronic and Communication Engineering
- Statistics

Mechanical Construction and Engineering

- Construction Project Management with BIM\*
- Engineering Management
- Mechanical Engineering
- Project Management\* ^ \*\* \*\*\*
- Renewable and Sustainable Energy Technologies
- Professional Practice in Project Management†

Nursing, Midwifery and Health Courses

- Healthcare in Professional Practice
- Healthcare Management
- Professional Non-Surgical Aesthetic Practice
- Nursing
- Nursing Leadership

Psychology

- Psychology
- Health Psychology
- Occupational and Organisational Psychology
- Sport and Exercise Psychology

Social Sciences

- Criminology and Criminal Justice
- International Development
- International Relations, Conflict and Security
- Social Sciences

Social Work, Education and Community Wellbeing

- Early Primary Education (Blended Learning)
- Education
- Healthcare Management
- Occupational Therapy
- Primary Education (PGCE)
- Public Health
- Public Health (Nutrition)
- Secondary Art, Craft and Design (PGCE)
- Social Work
- Special and Inclusive Education
- Teaching Pupils with Dyslexia within an Education and Training Setting

Sport, Exercise and Rehabilitation

- Clinical Exercise Physiology
- Exercise Science
- International Sport Management
- Physiotherapy
- Strength and Conditioning

2 Year Masters

A number of our PG courses are offered over a longer period than the traditional one-year route, taking into account a second year where you have the option of undertaking an Advanced Practice or Study Abroad option.

Advanced Practice options

**Internship:** This route offers the opportunity to spend three months working full-time in one of the many companies and organisations with which we have close links.

**Business Clinic (Business Courses):** Work in the Business Clinic within our Business School and gain experience providing consultancy services to businesses in the region.

**Research (Engineering, Environment, Computing Courses):** Carry out work with one of the Research Groups within the Faculty. There is every possibility that you may contribute to published research and therefore you may be named as part of the research team, which would be a great start to a research career.

**Study Abroad:** Spend a semester studying at one of our many partner institutes, where we have exchange agreements with universities all over the world, including partners in Europe, Asia, South America and Oceania.

**Discover more and a full list of courses that offer the 2-year Masters option at [www.northumbria.ac.uk/coursesearch](http://www.northumbria.ac.uk/coursesearch)**

Postgraduate Research

Postgraduate students are a vitally important part of our research landscape, with over 500 students studying for research degrees (MPhil, MRes, PhD, Professional Doctorate) across the university.

We have a vibrant community of postgraduate researchers, supported by excellent facilities and offer a range of PhD/MPhil programmes, research projects, and studentships throughout the year, across all academic departments.

**Discover current research opportunities at [www.northumbria.ac.uk/research](http://www.northumbria.ac.uk/research) and select postgraduate research.**



Discover more at [northumbria.ac.uk/coursesearch](http://northumbria.ac.uk/coursesearch)

- \* Available to study via distance learning degrees.
- ^ Advanced Practice or Study Abroad module option
- \*\* Also available at London campus
- † Only available at London Campus
- \*\*\* Also available at Amsterdam Campus

Courses correct at time of going to print. Check website for up-to-date information.



# Fees and finance



Individual course fees available online at [northumbria.ac.uk/internationaldiscounts](http://northumbria.ac.uk/internationaldiscounts)

**International students**  
20% Alumni discount for Postgraduate study

A range of scholarships and bursaries

Early payment discounts available

## Fees

You'll find all of our fees on our website, and we can tell you with confidence that they're very competitive. We also offer financial incentives throughout the year - keep checking the website or register for updates to be the first to find out the details.

Discover more [northumbria.ac.uk/fees](http://northumbria.ac.uk/fees)

## Scholarships

We offer a number of scholarships, to learn more and how to apply please visit [northumbria.ac.uk/fees](http://northumbria.ac.uk/fees)



Find out more at [northumbria.ac.uk/internationaldiscounts](http://northumbria.ac.uk/internationaldiscounts)



Find out more at [northumbria.ac.uk/UGscholarshipsEU](http://northumbria.ac.uk/UGscholarshipsEU)  
[northumbria.ac.uk/PGscholarshipsEU](http://northumbria.ac.uk/PGscholarshipsEU)

**GENEROUS  
SCHOLARSHIPS  
FOR ELITE LEVEL  
STUDENT ATHLETES**



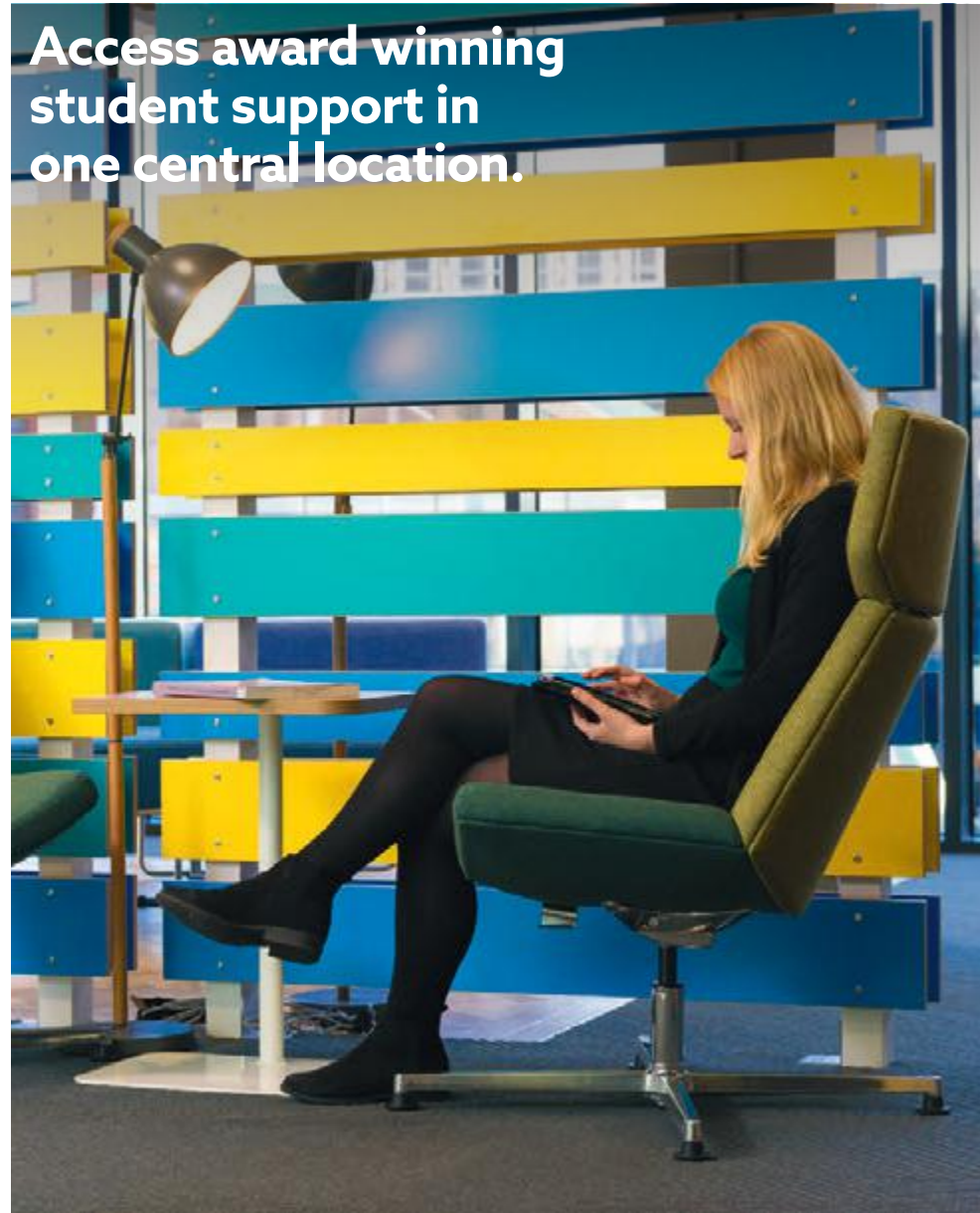
**You don't have to study sport to be a student athlete.**

Our Sport Scholarship Scheme helps the most talented student athletes achieve their academic and athletic ambitions through a nationally leading programme of athlete support services and a number of part-funded tuition fee scholarships.



Find out more at [northumbriasport.com](http://northumbriasport.com)

# Student support



Student Central

## Services include:

Finance  
Welfare  
Health  
Visa and immigration  
Disability and dyslexia  
Free airport pick up service





## Your International application journey starts here

This is our guide to the undergraduate admissions process, showing the main steps you'll need to follow. Remember to allow plenty of time to apply and take note of our application deadlines.

Applications can be made to most of our courses by using the Apply Online function on the individual course listing.

Applicants can also apply for undergraduate courses via the Universities and Colleges Admissions Service (UCAS).

As well as team of dedicated staff in the UK, we also have regional offices in China, Malaysia, India, and Thailand and a permanent representative in West Africa.

### International postgraduate applicants

Apply online via our website [northumbria.ac.uk](http://northumbria.ac.uk)\*

\*Exceptions include PGCE and Law professional courses, where you apply directly to the professional body.

### 1. Research

Visit: [northumbria.ac.uk/international](http://northumbria.ac.uk/international) for information on how to apply, our courses and what the university and region has to offer.

### 2. Apply

You can apply for our programmes online via our course search facility or via UCAS if you are applying for an undergraduate programme.

### 3. Selection

Northumbria will consider your application and decide whether to make you an offer. We may request further information such as a portfolio or invite you to an interview, either in person or via Skype.

### 7. Deposit

Most applicants are required to pay a deposit to secure their place.

### 6. Meet your conditions

If your offer was conditional, it is important for you to provide us with your results as soon as possible.

If you don't meet your conditions, don't worry we may be able to offer you an alternative programme so it is important to still send us your results.

### 5. Accommodation

Once you have an offer from Northumbria you will be sent details on how to apply online for accommodation by email.

We guarantee to find all new international students accommodation and you can even select your own room when you book.

### 4. Decisions

Once we have considered your application we will let you know the outcome by email. An offer will either be unconditional or conditional, depending if you have completed your qualifications or are still working towards them.

### 8. VISA

Once you have completed all the previous steps, the university will issue you a CAS to apply for your visa if you require one. It is important to prepare your visa application in good time so you can arrive in time for inductions.

### 9. Book meet and greet

We have a dedicated team who will meet you at Newcastle International Airport and help you settle into your accommodation. This is a free service but you must book in advance.

### 10. Self-registration

Before you arrive you should complete self-registration online.

### Welcome to Northumbria!

Once you arrive at the university, you will need to attend a campus enrolment session. Our induction and welcome events will help you find out more about life at Northumbria and make new friends from around the world.



## Your EU application journey starts here

### 1. Research

Visit [www.northumbria.ac.uk/study](http://www.northumbria.ac.uk/study) to explore your study options, or meet the university's EU team at an education fair in your home country.

### 2. Apply

Submit your application through UCAS Apply. Remember the key deadlines.

### 3. Selection

Each university will consider your application and decide whether to make you an offer. You may be asked to provide further information, submit a portfolio or attend an interview.

### 6. Accommodation

If you accept an offer from the university, you will receive information about how to book your accommodation via e-mail.

### 5. Make your firm and insurance choices

Once you have received all of your decisions use UCAS Track to choose your first (firm) and second (insurance) choices.

### 4. Decisions

Check UCAS Track regularly to see the decisions from each university. An unconditional offer means that you meet all the requirements for the course. A conditional offer means that you will need to meet conditions (e.g. achieve certain grades in your final exams) before you can join your chosen programme.

### 7. Meet your conditions

If you have a conditional offer, you need to meet the conditions on that offer before you can join the university.

### 8. I have met my conditions - what next?

We need to see evidence that you have met your conditions. You can upload documents such as exam certificates and test results using the applicant portal. You can also e-mail documents to [bc.applicantservices@northumbria.ac.uk](mailto:bc.applicantservices@northumbria.ac.uk). You should also supply translations if any of your documents are not in English.

### What if I don't meet my conditions?

Please contact our admissions team at [bc.applicantservices@northumbria.ac.uk](mailto:bc.applicantservices@northumbria.ac.uk) as soon as possible as we may still be able to accept you.

### 9. Enrol online

You will be sent further information on how to enrol on your programme before you arrive in Newcastle.

### 10. Meet and greet

We have a dedicated team who will meet you at Newcastle International Airport and help you settle into your university accommodation. This is a free service but you must book in advance.

### Welcome to Northumbria!

Our induction and welcome events will help you find out more about life at Northumbria and make new friends from around the world.

This is our guide to the undergraduate admissions process, showing the main steps you'll need to follow. Remember to allow plenty of time to apply and take note of our application deadlines.

The Universities and Colleges Admissions Service (UCAS) processes applications for all undergraduate courses. The UCAS institution code for Northumbria University is NORTH N77.

Applications are made using the secure, web based application system UCAS Apply at [ucas.com](http://ucas.com)

You can apply for up to five courses. Each course can be at a different university or you can apply for multiple courses at each institution.

All applications are treated equally and admissions selectors will not be able to see which other institutions you have applied to, so you should not express any order of preference when you apply.

#### EU postgraduate applicants

Apply online via our website [northumbria.ac.uk](http://northumbria.ac.uk)\*

\*Exceptions include PGCE and Law professional courses, where you apply directly to the professional body.



International enquiries

(+44) 191 227 4274

bc.applicantservices@northumbria.ac.uk

International Admissions

(+44) 191 243 7906

bc.applicantservices@northumbria.ac.uk

EU enquiries

eurecruitment@northumbria.ac.uk

EU admissions

bc.applicantservices@northumbria.ac.uk

London campus

Northumbria University  
110 Middlesex Street  
London  
E1 7HT

Student general enquiries

london.enquiries@northumbria.ac.uk

Recruitment line

(International students)

Tel: +44 (0)20 8003 0673

Recruitment line (EU students)

Tel: +44 (0)20 8108 2180

[www.northumbria.ac.uk/london](http://www.northumbria.ac.uk/london)

Overseas Offices

Thailand

Also responsible for  
Indonesia, Cambodia,  
Laos, Myanmar, Pakistan  
and Vietnam.

Northumbria University  
Thailand Office, 283/46,  
Unit 1001-1, 10th Floor,  
Home Place Building,  
Sukhumvit 55 (Thonglor 13),  
Bangkok 10110, Thailand

Tel: (+66) 2044 6430  
thaioffice@northumbria.ac.uk

India

Also responsible for  
Bangladesh and Nepal.

Northumbria University  
India Liaison Office, 1606 Spaces,  
Level 16, Building 9A,  
Cyber City DLF Phase-2,  
Gurugram Haryana 122002,  
India

Tel: (+91) 124 402 0550  
er.indiaoffice@northumbria.ac.uk

P. R. China

FAO: Sunny Sun  
Northumbria University  
China Office  
Room 1610, Block B  
Winterless Centre  
Jia 1, Xi Da Wang Road  
Chaoyang District  
Beijing 100026, P. R. CHINA

Tel: (00) 86 10 6538 8135  
chinaoffice@northumbria.ac.uk

Malaysia

Also responsible for  
Brunei, Hong Kong, the  
Philippines, Singapore,  
Taiwan and South Korea.

Northumbria University  
Malaysia Office,  
Unit A-8-3, 8th Floor, Block A,  
Northpoint Building @  
Midvalley City,  
1 Jalan Syed Putra Utara,  
59200 Kuala Lumpur,  
Malaysia

Tel: (+603) 2287 8080  
malaysiaoffice@northumbria.ac.uk

Nigeria

FAO: Doyin Adetula  
- Nigeria Country Officer  
Northumbria University  
Nigeria Office  
2A Louis Solomon Close  
(Street beside Silverbird Galleria)  
Off Ahmadu Bello Way  
Victoria Island  
Nigeria

Mobile: (00) 234 8188 157535  
nigeriaoffice@northumbria.ac.uk

Connect with us

@NorthumbriaUni


NorthumbriaUni

NorthumbriaUni





[www.northumbria.ac.uk](http://www.northumbria.ac.uk)  
(+44) 191 227 4274

Connect with us  
 @NorthumbriaUni  
 NorthumbriaUni  
 NorthumbriaUni

**#TakeOnTomorrow**