



GET

**READY**

TO MAKE A DIFFERENCE

International Pathway Programmes  
**2022/23**

[qa.solent.ac.uk/pathway](https://qa.solent.ac.uk/pathway)

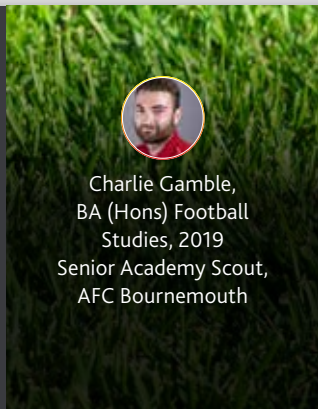


## CONTENTS

SOLENT AND OUR CITY	6
CUTTING-EDGE CAMPUS	12
WHY SOLENT	16
LIVING IN SOUTHAMPTON	18
OUR STUDENT RESIDENCES	20
INTERNATIONAL PATHWAYS	22
INTERNATIONAL FOUNDATION PROGRAMME	24
MONEY AND SUPPORT	30
APPLICATION JOURNEY	31
HOW TO APPLY	32



Adam Lewis,  
BSc (Hons) Merchant Ship Operations, 2005  
Head of Training and Operations for International Maritime Employers' Council



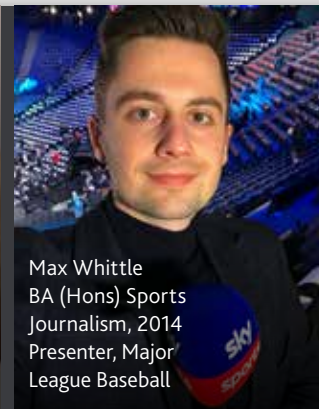
Charlie Gamble,  
BA (Hons) Football Studies, 2019  
Senior Academy Scout,  
AFC Bournemouth



Nadia Lele,  
BEng (Hons) Yacht and Powercraft Design, 2017  
Structural Engineer at Olesinski Naval Architects



Nisha Haq, BA (Hons) Photography, 2014  
IPSE UK's Young Freelancer of the Year 2017,  
shortlisted in UK  
Wedding Awards Best Photographer category (2018)



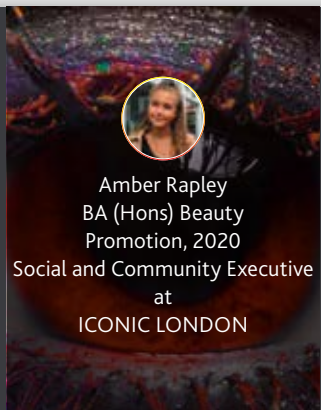
Max Whittle  
BA (Hons) Sports Journalism, 2014  
Presenter, Major League Baseball



Sebastian Graves-Read  
LLB (Hons) Law, 2019  
Senior Policy Advisor,  
UK Home Office

## #SOLENTSTORIES

Solent students learn from practising professionals, hear from leading experts, get hands-on experience and develop fantastic industry connections. Their stories start with us – and that can take them anywhere. Don't just take our word for it – take a look at some recent success stories from Solent alumni; who knows, one day you too could be sharing yours here.



Amber Rapley  
BA (Hons) Beauty Promotion, 2020  
Social and Community Executive at  
ICONIC LONDON



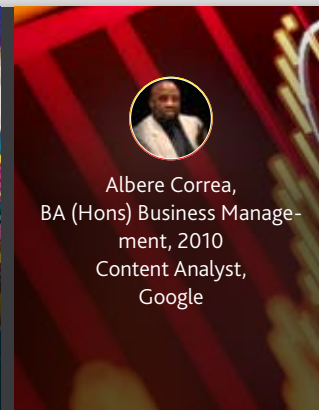
Jason Livingstone,  
BA (Hons) Interior Design Decoration, 2017  
Store Designer for Ted Baker



Dean Massey  
BA (Hons) Television and Video Production, 2017  
Camera Operator/Editor,  
Sky News



Kev Munday,  
BA (Hons) Graphic Design, 2009  
'A British Artist to Invest In  
Right Now' The Telegraph



Albere Correa,  
BA (Hons) Business Management, 2010  
Content Analyst,  
Google



Jo Howarth,  
BSc (Hons) Music Management, 2018  
YM&U Group,  
Management Assistant





# SOLENT AND OUR CITY

Southampton is our home – a vibrant and modern city. It's big enough to have something for everyone, yet small enough to put everything within easy reach.

And Solent University is right in the middle of it.

Our city-centre campus gives students access to all the benefits of the south coast's biggest city – whether that's shopping, culture, diversity, sport or career opportunities.

And we do everything we can to improve those opportunities. Strong ties throughout the city – in art, in sport, in government, in business – mean our students have all the chances they could ever need to get professional experience in their industry.

Plus there's a variety of ways to make a difference in the local community – from volunteering at Southampton Pride to raising funds through the ABP Southampton Marathon.

We also play an active role in key city celebrations and festivals, working with community partners every year to host cultural exhibitions, public speakers and sporting events.

Take Solent Gallery, for example. This dedicated gallery brings modern and innovative art to the centre of Southampton – free for anyone to appreciate. But it also brings opportunity, providing residencies and exhibition space each year for the most promising students.

Or take the coaching innovation programme, through which students design and carry out a range of community health and fitness programmes.

Or Solent Creatives, connecting student freelancers with the businesses that need their skills.

Or Re:So, our award-winning student-run retail outlet in the local Marlands shopping centre. You get the picture.





## Food and drink



Oxford Street. Guildhall Square. Bedford Place. Bevois Valley. Ocean Village... If you're looking for cafes, restaurants, pubs and bars, there are little clusters of nightlife scattered around the city – plus Westquay's huge new complex, packed full of international dining options.



## Shopping



Westquay, one of the biggest shopping centres in the country, with around 150 big high street names. Plus the Marlands Centre just up the road, and unique boutiques scattered all around the city.



## Music



Southampton's thriving local music scene includes small and indie venues like the legendary Joiners, as well as megaclub Oceana – and everything in between.



## Sport



Premier League football. County and international cricket. Climbing and bouldering not far from campus. Plus watersports on the Solent, made world-famous for sailing during the 2012 Olympics.

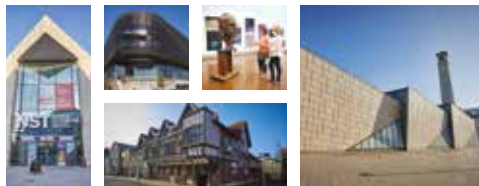




## Culture



The south coast's biggest theatre, with all the big West End tours. Three cinemas, from arthouse to high-end. City-centre theatres and art galleries – including Solent's own art gallery.



## Transport links



Southampton is perfect for exploring the UK, with flights all over from Southampton Airport, and fast rail and road links to London and beyond.



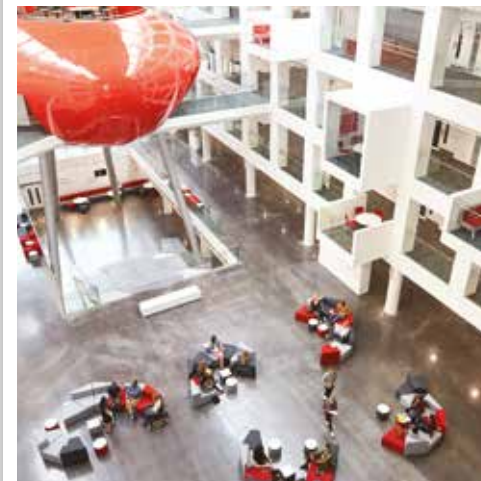
## Countryside



Our campus is surrounded by just a few of the city's many parks. Southampton Common has 365 acres of managed woodland and open space. Plus the New Forest National Park is just east of the city, a perfect playground for runners, walkers, cyclists and anyone looking for a breath of fresh air.



## Campus



Our vibrant city-centre campus gives you easy access to Southampton's shops, culture, diversity and sport. Plus our new on-campus sports centre is perfect for a quick gym session between lectures.






# CUTTING-EDGE CAMPUS

Over the last few years we have made a £100 million investment in our campus, introducing state-of-the-art facilities to enhance your learning.

## THE SPARK BUILDING

Our award-winning teaching and learning building, the Spark, is a centrepiece of our campus – and everything about it is centred around you and your learning. Our lecture theatres include at-seat charging sockets for laptops and tablets, while the latest lecture-capture technology uploads to our virtual learning environment, so you can really focus on learning, not note-taking.

The Spark is a BREEAM 'excellent'-rated building for its sustainability credentials.

 Solent is working towards a 33% carbon reduction target by implementing a wide range of energy efficiency projects across our campuses.



## Virtual tour

Take a virtual tour of our facilities; visit [www.solent.ac.uk/virtual-tour](http://www.solent.ac.uk/virtual-tour)



## STATE-OF-THE-ART SPORTS COMPLEX

Featuring two sports halls, two fitness studios, a health and fitness gym, a strength and conditioning gym and high-quality teaching facilities.



## A FULLY EQUIPPED OUTSIDE BROADCAST VEHICLE

Used by Solent students to broadcast live from events such as the Glastonbury Festival, and package up footage for international broadcasters such as the BBC.



## DIGITAL CINEMA WITH DOLBY ATMOS AUDIO

Our student-run cinema makes us one of just a handful of universities worldwide with Dolby Atmos encoding capabilities.



## £43 MILLION INVESTED IN OUR MARITIME TECHNOLOGY AND CAMPUSES

Together with brand-new high-tech campuses for deck and engineering education – and one of the world's leading manned model ship-handling centres – our unrivalled new simulator centre ensures we continue to deliver the very highest standards of professional ship and port training.



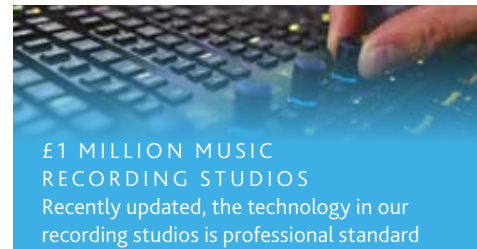
#### A 60-METRE HYDRODYNAMIC TESTING TANK

Provides professional testing facilities for watercraft design. Students also have access to our temperature-controlled composite materials lab, 3D scanning and printing facilities, and a dedicated design suite.



#### BIOMEDICAL SCIENCE LABORATORY

Our biomedical science laboratory is purpose-built to support teaching and research in biomedical science and nutrition. The space includes two teaching laboratories, one tissue culture laboratory and one preparation and instrumentation room.



#### £1 MILLION MUSIC RECORDING STUDIOS

Recently updated, the technology in our recording studios is professional standard throughout. The primary studio features an industry-leading 24-fader, six-knob Avid S6 M40 control surface; all nine studios run on Pro Tools HD and Logic Pro X software, complemented by quality microphone pre-amps and hardware compressors, EQs and a suite of plug-ins from Sonnox, McDSP, Avid and Melodyne.



#### £1.3 MILLION HI-TECH SPORT SCIENCE LABORATORIES

Including purpose-built labs for biomechanics, nutrition and psychology, and a BASES-accredited physiology lab, plus all the tools you need to monitor your subjects: data collection software, motion capture, eye-tracking, reaction timers, force transducers and more.



#### A MULTI-FUNCTION PERFORMANCE SPACE AND HD TV STUDIO

One of the biggest HD studios in the south of England. Plus two fully equipped HD TV studios, eight radio studios and ten audio recording studios; photography, animation and green-screen studios; and a professional-grade newsroom.



#### BESPOKE NURSING LABORATORY

Built to a bespoke design following consultation with industry, our six-bed simulated nursing ward reflects acute patient care in a clinical environment, enabling student nurses to practise their skills without any risk to patients. State-of-the-art equipment includes a high-fidelity Nursing Anne simulator – capable of verbal noises, breathing, blinking, and palpate pulses.



#### SPECIALIST PHOTOGRAPHY STUDIO

Our campus is also home to a specialist infinity cove – a photography studio specifically designed to give the impression that the background of an object extends to infinity.



#### A WELL-STOCKED LIBRARY WITH FLEXIBLE OPENING HOURS

Our well-stocked library is open 24 hours a day during term-time, and features a huge range of books, journals and other materials in both print and electronic format – as well as over 800 study places, including group and individual study rooms and silent study areas.



# WHY SOLENT

KNOWLEDGE.  
SKILLS.  
CONNECTIONS.

Everything we do at Solent is focused on you - your learning, your life, your career. We offer all the skills, knowledge and practical experience you'll need - all of the things employers are looking for. So when you graduate, you'll already feel like a professional.

You'll benefit from our superb industry contacts and cutting-edge facilities throughout your studies - and we'll encourage you to be more confident, develop your subject knowledge, and expand your skills. We pride ourselves on our values and giving you the best experience we can while inspiring you to reach your full potential.

## STRONG LINKS WITH INDUSTRY

Our course teams have strong links with local, national and international industries. While our mentoring programme can match you with a local industry specialist to help you develop your professional confidence.

Plus, our online student jobs board and our in-house creative agencies provide employment and experience opportunities throughout your studies.

## KNOWLEDGE AT YOUR FINGERTIPS

Our modern libraries are home to a huge range of online and offline resources, plus award-winning service and support, and hundreds of bookable, Wi-Fi-enabled study spaces. Plus, our online learning environment puts learning materials, study guides and a personal ePortfolio page at your fingertips.



We are an Adobe Creative Campus, offering free student access to Adobe's suite of professional-grade creative software.



Four-star rated overall, with five stars for employability, facilities, inclusiveness, internationalisation and teaching.  
QS World University Rankings, 2019



Home to world-leading research in communication, cultural and media studies, and art and design.



Fourth in the sector for number of graduate start-ups – our fourth top-ten year in a row.  
Higher Education Business and Community Interaction (HE-BCI) survey, 2018/19



One of the world's leading maritime training academies.

# LIVING IN SOUTHAMPTON

Our campus is right in the heart of this exciting city, giving you easy access to everything from food and drink to culture and sport.

## ENTERTAINMENT

Southampton's Westquay and Marlands shopping centres offer over 150 shops and a huge and varied selection of food options.

Our high street has all the familiar names, while Oxford Street, Bedford Place and other avenues tempt you out to the fringes with clusters of boutique stores.

Southampton has a wide selection of pubs, bars, microbreweries and restaurants - everything from well-known chains to the unique menus of independent gems.

## CULTURE

Film lovers are spoiled for choice, with multiplexes - including the new Showcase Cinema de Lux - and arthouse releases at Harbour Lights.

Southampton is home to one of the largest regional theatres in the UK, the Mayflower, which hosts all the West End's major touring productions, while Guildhall Square - just five minutes' walk from Solent's main campus - is at the heart of the city's cultural quarter. Here you'll find the new Nuffield theatre, the John Hansard Gallery, Southampton City Art Gallery, Sea City Museum and Solent's own Showcase Gallery.

## SPACE TO CHILL

Whether you're looking for a place to sit and read, a quiet cafe for lunch with friends or somewhere for a quick football game, there's plenty of room to relax.

Southampton is also one of the greenest cities in the country, with five central parks clustered around Solent's East Park Terrace campus, plus a vast, 326-acre common.





# OUR STUDENT RESIDENCES

Where you live while studying means more than just a roof over your head. It's a place of your own – to relax, study and spend time with your friends.



#SOLENTSTORIES

**Giorgia Pizzimenti**  
BA (Hons) Fashion Journalism student

"I lived in Kimber in my first year of university, which is in a lovely location. There was always someone to chat to in the common room or kitchen – we were all from different countries, so it was nice to find out about other cultures."



## Virtual tour

Take a closer look at our modern student residences; visit:  
[solent.ac.uk/virtual-tour](https://solent.ac.uk/virtual-tour)



## Private housing

Do you want a bit more independence? Southampton offers many private housing options – for details, visit [solent.ac.uk/accommodation](https://solent.ac.uk/accommodation) or contact our dedicated housing adviser on [@accommodation](https://twitter.com/accommodation) [@solent.ac.uk](https://www.facebook.com/accommodation)

**DAVID MOXON**  
117 rooms | En-suite  
8-minute walk to campus

**KIMBER**  
274 rooms | En-suite  
8-minute walk to campus

**HAMWIC**  
228 rooms | En-suite  
8-minute walk to campus

**CHANNY**  
208 rooms | Shared bathrooms  
10-minute walk to campus

**DEANERY**  
422 rooms | En-suite  
12-minute walk to campus

## WHAT'S INCLUDED IN YOUR RENT?

- Up to 100 Mb WiFi access in each study-bedroom
- Personal contents insurance
- Social rooms with table tennis and pool tables
- All utility bills
- Cleaning of communal areas
- Repairs and maintenance
- Residence management team available 24 hours a day
- Adapted and accessible rooms for students with disabilities

# INTERNATIONAL PATHWAY PROGRAMMES

If you're looking to study at Solent University and need to build on your existing qualifications to meet the entry requirements, our pathway programmes are designed to do just that. Our pathway programmes will support and help you develop your English language ability and academic study skills to offer you progression onto Creative, Engineering, Art, Computing and Business undergraduate degrees at Solent University.

"My best experience so far is how welcoming the university is to international students. They threw a welcome party and the teaching techniques here are very understandable."

Tenu Evans

International Foundation Programme



## WHY STUDY WITH US

- Prepare yourself for UK undergraduate studies
- Taught by lecturers and academic with experience supporting international students
- Be part of a university campus from day 1, with access to all of the universities facilities
- Gradual familiarisation to living and studying in the UK



# INTERNATIONAL FOUNDATION PROGRAMME



OVERVIEW

The International Foundation Programme is designed to develop your academic skills and English language levels to progress on to an undergraduate programme in a specific subject area.

INTERNATIONAL FOUNDATION PROGRAMME	
Level	Foundation – NQF Level 3
Duration	2 terms
Start dates	October, January
Tuition fee	£11,500
English language requirements	IELTS 5.5 overall (minimum 5.5 in each individual component), or equivalent from a UKVI approved centre
Academic entry requirements	12 or 13 years of schooling dependent on the education system in country. Specific country entry requirements apply.
Mode of study	Full-time: Lectures, seminars and workshops
Assessment methods	Coursework, in-class tests and portfolios
Class hours per week	16-20 hours
Minimum age	17 years old - you must turn 18 within the first 6 months of your programme



EXAMPLE MODULES		
Term 1 and 2 All single modules are 20 credits unless otherwise stated	Academic English	
	Academic Language in Context	
	Applied Academic Skills	
	Research Project	
Pathway specific modules All single modules are 20 credits unless otherwise stated	Business and Management Pathway	Business Environment
		Management Fundamentals
	Creative Industries Pathway*	Introduction to Creative Practice or, Introduction to Media (Term 1)*
		Creative Project
	STEM Pathway	Foundation Mathematics Problem Solving

\* Which module you study will depend on your target undergraduate degree.



### BUSINESS AND MANAGEMENT PATHWAY

The International Foundation Programme - Business and Management Pathway equips you with the essential skills to maximise your learning in a wide range of disciplines, from business and management, to marketing and accounting.

Investigating the business world through multiple lenses, you will develop an understanding of the environment in which businesses operate and the roles different functions within a business play. The pathway also introduces management theories practically, approaching business operations through the role of a manager.



### CREATIVE INDUSTRIES PATHWAY

The Creative Industries Pathway introduces you to the key principles and skills in media, art and design. You will have the opportunity to develop your knowledge in an area of which you have a particular interest within the creative industries. The aim is to develop your creative capacity, confidence and skills, so that you are able to communicate your ideas effectively. The course involves a Creative Project module which allows you to build upon your ideas, well-preparing you to progress on to a creative industries or media-related programme at undergraduate level.



### STEM PATHWAY

The STEM Pathway will teach you the fundamentals of scientific and mathematical reasoning, developing your use of statistics to test hypothesis and validity of scientific data. Assessments are based on demonstrating the application of the theory in projects and portfolios that are typical at undergraduate level, leaving you well-placed for successful undergraduate studies in a range of fields including sustainability, biomedical science and design and manufacture.



# INTERNATIONAL FOUNDATION PROGRAMME PROGRESSION OPTIONS

On these pages, you can find the typical progression routes that feed into each undergraduate degree at Solent University.

Combined CAS options are available for your pathway programme and all of these undergraduate degrees, meaning you will have just one visa application that covers all of your studies at Solent.

Upon successfully completing your pathway programme you will be able to progress onto the following degrees:

## BUSINESS AND MANAGEMENT PATHWAY

- BSc (Hons) Accountancy and Finance
- BSc (Hons) Business Management
- BSc (Hons) Business Management with Digital Technologies
- BSc (Hons) Business Management with Finance
- BSc (Hons) Business Management with Marketing
- BSc (Hons) Construction Management
- BA (Hons) Fashion Management with Marketing
- BSc (Hons) Football Studies
- BSc (Hons) International Business Management

- BSc (Hons) Maritime Business
- BA (Hons) Music Business
- BSc (Hons) Shipping and Port Management
- BA (Hons) Sociology
- BSc (Hons) Sport Management

## CREATIVE INDUSTRIES PATHWAY

- BA (Hons) Acting and Performance
- BA (Hons) Animation
- BA (Hons) Architectural Design and Technology
- BA (Hons) CGI and Visual Effects
- BA (Hons) Computer Games (Art)
- BA (Hons) Fashion
- BA (Hons) Fashion and Beauty Media
- BA (Hons) Fashion Photography
- BA (Hons) Fashion Styling and Creative Direction
- BA (Hons) Film and Television
- BA (Hons) Film Production
- BA (Hons) Fine Art
- BA (Hons) Graphic Design
- BA (Hons) Illustration
- BA (Hons) Interior Design
- BA (Hons) Interior Design Decoration
- BA (Hons) Make Up and Hair Design

- BA (Hons) Media Production
- BA (Hons) Photography
- BSc (Hons) Popular Music Production
- BA (Hons) Post Production for Film and Television
- BA (Hons) Prosthetics and Special Effects Design
- BA (Hons) Television Production

## STEM PATHWAY

- BA (Hons) Computer Games (Design)
- BSc (Hons) Computer Games Technology
- BSc (Hons) Computer Systems and Networks Engineering
- BSc (Hons) Computing
- BSc (Hons) Criminology and Psychology
- BSc (Hons) Cyber Security Management
- BSc (Hons) Digital Design and Web Development
- BEng (Hons) Electronic Engineering
- BSc (Hons) Health, Nutrition & Exercise Science
- BEng (Hons) Mechanical Engineering
- BSc (Hons) Psychology
- BSc (Hons) Psychology with Counselling and Mental Health
- BSc (Hons) Psychology and Sociology
- BEng (Hons) Renewable Energy Engineering

- BSc (Hons) Software Engineering
- BSc (Hons) Sport and Exercise Science
- BSc (Hons) Sport and Exercise Psychology
- BEng (Hons) Yacht Design and Production
- BEng (Hons) Yacht and Powercraft Design

Find out more:  
[qa.solent.ac.uk/progression](http://qa.solent.ac.uk/progression)

# MONEY AND SUPPORT

As a pathway student, you'll have two main types of expenses - tuition fees and your living costs. Some courses also have additional or optional costs - for field visits or equipment, for example - and you can find details of these on our online course pages.

## FINANCE

Cost is an important factor for most students and we fully appreciate what a big investment you are making in your future. We have a number of measures in place to help make your study more affordable.

View all our information on finances and payments here:

[qa.solent.ac.uk/pathway-finance](https://qa.solent.ac.uk/pathway-finance)

## SCHOLARSHIPS AND BURSARIES

Scholarships and bursaries are available for eligible students. You can find details of our financial support packages and eligibility here:

[qa.solent.ac.uk/scholarships](https://qa.solent.ac.uk/scholarships)

# APPLICATION JOURNEY

## CHECK YOUR ENTRY POINT

Check which entry point is most suitable for you and the minimum grades for your target course.

Find out more:

[qa.solent.ac.uk/pathway-entry](https://qa.solent.ac.uk/pathway-entry)

## TALK TO US

If you would like more information, please contact us and our advisers will be able to discuss the details of your academic history and recommend the best entry point for you.

## COLLECT YOUR SUPPORTING DOCUMENTS

In order for you to make a successful application to Solent University, you are required to submit supporting materials. This will include; references, a copy of your passport, and current and previous UK visas

## START YOUR APPLICATION

Once you have decided which course you want to apply for, click the 'Apply online' link on the course page, to begin your online application.

## DRAFT YOUR STATEMENT

Draft your personal statement carefully so that it reflects your choice of course(s) and why you have chosen this/these course(s) at Solent.

## SUBMIT YOUR APPLICATION

Submit your application along with your supporting documents via our online admissions portal.



# HOW TO APPLY

## REQUEST MORE INFORMATION

If you are unsure which course is suitable for you, or would like to find out more information about how to apply, you can register your interest at:

[qa.solent.ac.uk/pathway-apps](https://qa.solent.ac.uk/pathway-apps)

Once you complete the enquiry form, one of our study advisers will contact you to discuss your options.

## WHEN TO APPLY

We strongly recommend that you apply as early as possible for your chosen course to allow enough time to complete all the preparations you need to make in order to study in the UK. For more information on key dates and deadlines, please visit: [qa.solent.ac.uk/keydates](https://qa.solent.ac.uk/keydates)

## WHAT HAPPENS NEXT

The Admissions Team will consider your application. Successful applicants will receive an offer to study along with details for registration and enrolment.

## QUESTIONS ABOUT YOUR APPLICATION

You can contact our Admissions Team for advice at any time during or after the application process. The Admissions Team will help you with enquiries about admission and the progress of your application.

T: **+44 (0)20 3475 0351**  
E: [qahe.admissions@qa.com](mailto:qahe.admissions@qa.com)



### #SOLENTSTORIES

**Su Min Lee**  
International Foundation  
Programme (Creative Industries)

"The best part of my experience so far has been able to try new and different creative methods."

The lecturers and resources have helped me to wider my thinking and taught me to approach things in a new way."



### #SOLENTSTORIES

**Francky Victor**  
International Foundation  
Programme (Business  
Management)

"My experience at Solent University so far has been wonderful; the teachers and institution have exceeded my expectations and I'm satisfied with the teaching I'm receiving."

The lecturers have helped me so much; they always try their best to make sure we understand what we're being taught."



# HOW TO FIND US

## BY ROAD

Southampton is just 75 miles from London.

- From the north, London and the home counties: the M3, M27 and A34 provide fast, direct road links to the city.
- From the west: the M4/A34 and the A36 are the major routes from the West Country, Bristol and Wales.
- From the east: follow the A27/M27 and leave at Junction 8.

The University's postcode is SO14 0YN.

**Parking:** As a city-centre university, there is little parking on campus, but there are plenty of car parks close by.

A map can be found at [www.southampton.gov.uk/roads-parking/parking](http://www.southampton.gov.uk/roads-parking/parking)

## BY RAIL

The closest train station is Southampton Central. From London, take the regular train service from London Waterloo station.

## BY COACH

National Express and Megabus both provide regular services to Southampton.



For more information and downloadable maps (including our accessibility map), visit [www.solent.ac.uk/find-us](http://www.solent.ac.uk/find-us)



# CONTACT US

T: +44 (0)20 3475 0351

E: [qahe.admissions@qa.com](mailto:qahe.admissions@qa.com)

Connect with other new students on social media

- f solentuniversity
- @solentuni
- solentuniversity
- solentuni

## DISCLAIMER

The Pathway programmes in this prospectus are delivered by Solent Pathway Campus, a college of Solent University which is jointly owned by Solent University and QA Higher Education – a UK higher education provider. These programmes are validated by the University and taught by Solent Pathway Campus staff.

Solent University and QA Higher Education are committed to being equal opportunities education providers and will therefore make reasonable adjustments for disabled applicants and students. The information given in this publication is accurate at the time of going to print in January 2022 and the University and QA Higher Education will use all reasonable efforts to deliver the programmes as described.

The University and QA Higher Education reserve the right to withdraw or change the programmes or programme combinations included in this prospectus. These changes will only be made as a result of UK legal compliance, minimum student number requirements or for course validation reasons and applicants will be contacted by the University or QA Higher Education at the earliest opportunity in the instance of these changes occurring.

Please check the website for up-to-date information on our programmes.

Visit us at [qa.solent.ac.uk/pathway](http://qa.solent.ac.uk/pathway) 35



**SOLENT**  
UNIVERSITY  

---

SOUTHAMPTON

IN PARTNERSHIP WITH



T: **+44 (0)20 3475 0351**

E: **[qa.solent.ac.uk/pathway](mailto:qa.solent.ac.uk/pathway)**