



**Northumbria
University**
NEWCASTLE

In partnership with



#TakeOn Tomorrow

**Pathways and Pre-Master's
Programmes 2023/24**

northumbria.ac.uk/pathway

Committed to a Greener Planet

At Northumbria, we are passionate about saving our planet.

Northumbria has recently been rated 17th overall in the UK and 'first class for sustainability' in the People & Planet University League 2021.

We are committed to optimising our contribution to the UN Sustainable Development Goals (SDG) through our research, teaching, campus and operations.

As part of our efforts to reduce our impact, we have produced this mini-guide in replacement of our larger prospectus. In doing so, we have saved almost 5 million pages of paper and over 10 tons in weight when printing and distributing the guide.

All of the up-to-date information about coming to university is best found on our website.

CONTENTS

Why Northumbria?

Discover why you should study at Northumbria – a research-rich, business focussed, professional university with a global reputation for academic excellence.

Check out pages 4 – 11

Where You Belong

Learn more about life both at Northumbria and in the city of Newcastle. Become part of the #IAmNorthumbria family.

Check out pages 12 – 33

This is Your Time

Discover how to make the most of your time studying at Northumbria. Enhance your CV through placements and build connections for your future.

Check out pages 34 – 37

Support For You

At Northumbria we'll support you at every step of the journey. Whether it's helping you understand the application process, applying for that dream job, or just coping with the transition to university life.

Check out pages 38 – 51

It Starts Here

Whatever your passion or career ambitions, it's time to get into the details and find the perfect course for you. View the application journey, and find out how to get in touch.

Check out pages 52 – 83



#TakeOnTomorrow

At Northumbria University, we embrace tomorrow. We pursue new thinking, forge new partnerships, create and exchange new knowledge, and find new solutions.

Our inspirational academics, partners and students work together to tackle tomorrow's challenges head on. We're ready for the future whatever it may hold.

Confident and creative in everything we do, we offer leadership and direction in this fast-changing world. Those with courage will transform lives and make a remarkable impact on the world.

Tomorrow. How will you handle it? Join us today and we can tackle this exciting new world together.

OUR ACADEMICS ARE TAKING ON TOMORROW

Northumbria is leading debate and responding to today's challenges through ground-breaking research which is brought into the classroom.

Northumbria ranked in the top 25 in the UK for research power (REF 2021): recording the highest rise in any institution for the second time.

Our academics explore some of the world's most urgent and complex problems and use their research to fight disease, increase life expectancy and protect our planet. They ask the questions that mean we can tackle tomorrow's challenges.



Dr Sainan Sun

Department of Geography and Environmental Sciences

Predicting the Antarctic's future contribution to sea level rise in a warming world.



Professor Neil Beattie

Department of Mathematics, Physics and Electrical Engineering

Developing new materials for solar photovoltaics that will power the future world.



Professor Clare Watt

Department of Mathematics, Physics and Electrical Engineering

Creating new models of space weather to protect humanity in space.



Dr Andrew Nelson

Department of Applied Sciences

Using genomics sequencing to prevent pathogenic bacterial communities in pre-term infants.



Professor Katy Jenkins

Department of Geography and Environmental Sciences

Supporting women activists in the global south to demand more sustainable and equitable futures.



Dr Kyle Montague

Department of Computer and Information Sciences

Designing accessible digital technologies to empower marginalised communities.

LEAD ON

We create confident leaders with the stamina, determination, talent and commitment to inspire and get results.

Fit for the 21st century and beyond, our students, staff and alumni do amazing things. Here are a handful of examples:



Karl Wharton MBE
Senior Lecturer in Sports Coaching

Karl has received an MBE for his leading work in gymnastics. Karl was Head Coach for the British National Gymnastics Team at six World Championships.



Sir Jonathan Ive KBE, Hon FREng, Hon DCL, RDI
Co-founder, LoveFrom & former Chief Design Officer, Apple

Sir Jony Ive KBE is a designer and joined Apple in 1992 as Chief Design Officer. Jony was responsible for all hardware, user interface and packaging design, as well as the major architectural projects Apple Park and Apple retail stores. In 2019, Jony and long-time friend and collaborator Marc Newson gathered the creative collective LoveFrom. He is a Design for Industry (1985) graduate.

Professor Matt Baillie Smith

International Development

Working with the Swedish Red Cross, Matt is bringing to light the challenges faced by volunteering and developing ways to protect and support all volunteers.



Professor Sir Chris Whitty
Chief Medical Officer (CMO) for England

Professor Sir Chris Whitty is the UK government's Chief Medical Adviser and head of the public health profession. He is also Chief Scientific Adviser for the Department of Health and Social Care and a practising NHS Consultant Physician. He is an LLM Medical Law (2005) graduate.



Louise Trotter
Creative Director, Lacoste

Louise graduated from Fashion and Marketing (1991). She has held leadership roles at Gap, Tommy Hilfiger, Jigsaw, Calvin Klein and Joseph and more recently Creative Director at Lacoste.



TOP OF OUR GAME

Top 25 in the UK for research power

Research Excellence Framework (REF 2021). The national system for assessing the quality of research in all UK universities

One of the best UK young universities in global rankings

Times Higher Education Young Universities Rankings 2021

Top 10 Student City

Student Hut Top UK Cities for 2022

Top 25 in the UK for the number in graduate jobs

Graduate Outcomes 2019/20

Top 50 UK university

Times Good University Guide, Guardian University Guide and Complete University League Tables 2023

5th in the UK for graduate start-up businesses

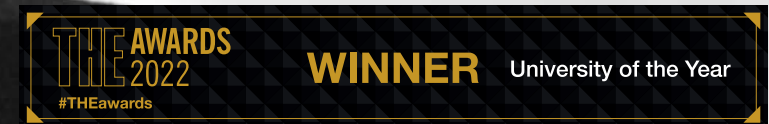
Higher Education Business Community Interaction Survey 2019/20 (HEBCIS)

Top 30 for sport in the UK

British Universities & Colleges Sport (BUCS)

17th in the UK and 'first class for sustainability'

People & Planet University League 2021



WHERE YOU BELONG

You come to university to learn, but there's so much more to experience.

Newcastle is consistently ranked as one of the best cities in the UK for students (*Student Hut Top UK Cities for 2022*). You're at the start of an incredible experience. New place, new people. With over 100,000 students across the North East, Newcastle is the perfect place to start your student journey.

Northumbria has modern facilities, extensive course choices and it's based in a cosmopolitan city with a vibrant student community. What more do you need?

Making the most at Northumbria means opening your mind, learning by doing, embracing the community and shaping an adventure that is completely yours. You aren't just getting an education; you are building a foundation for lifelong success.

Whether you love sport or culture and creativity, want to make a difference or be part of a global community, this is where you belong.

Through societies, volunteering, team sports and our alumni society, this is your chance to challenge yourself, build your confidence, try new things and meet new people with different ideas and viewpoints.



I AM NORTHUMBRIA



At Northumbria we welcome talented, curious, confident and creative students and staff from all around the world.

We want you to embrace life at Northumbria, explore new opportunities, get involved and be part of our community of inclusive, like-minded people just like you, who are making a difference.

Our culturally diverse environment will stimulate ideas, innovation and debate to enhance your learning and student experience. We're passionate about what we do and we are proud of our community.

By joining Northumbria you are joining a global family, we have alumni and staff from over 170 countries. Our alumni stay connected to Northumbria to offer future talent new opportunities. So even after you graduate, you'll always be a part of Northumbria.



Tyne Bridge

Newcastle is often voted one of the best (*Student Hut Top UK Cities, 2022*) and most affordable student cities in the UK and we're proud to call it our home.

Newcastle is the vibrant capital of North East England and one of the most exciting places in the UK.

The city blends the old and new beautifully, with rich historic landmarks and modern architecture.



Quayside



City Centre

Compact and easy to navigate, Newcastle offers a wealth of entertainment and activities. From galleries and museums to theatres and music venues; from restaurants and cafés to pubs and clubs, there is so much to do within walking distance of our city campus.

"Newcastle has everything! Great transport links, great night life - definitely one of the best student friendly cities in the country."

Rebecca Craig | BA (Hons) Fashion Communication



Hadrian's Wall

The fun doesn't stop there. With even more to do just on our doorstep; from rugged countryside to fabulous beaches, historic market towns and intriguing attractions.

Newcastle's surrounding area of Northumberland is full of culture and places to explore. You can take a walk along the World Heritage site Hadrian's Wall, or head to Alnwick Castle which was made famous as 'Hogwarts' in the Harry Potter film franchise.



Tynemouth



Alnwick Castle

Six North East beaches have been granted the International Blue Flag status, making them amongst the best in the world. These include Tynemouth Longsands, where you can enjoy award-winning fish and chips, King Edward's Bay and Whitley Bay.

If you fancy something closer then you can head to Gateshead to view the Angel of the North, an iconic sculpture created by Anthony Gormley, and discover the powerful message behind its creation.

No matter what your interests, Newcastle and the North East have something for everyone.

MAP OF THE CITY

Take a look around and get to know the city of Newcastle.

Newcastle has its own international airport and national rail links, making it easy to explore the UK, Europe and the rest of the world.

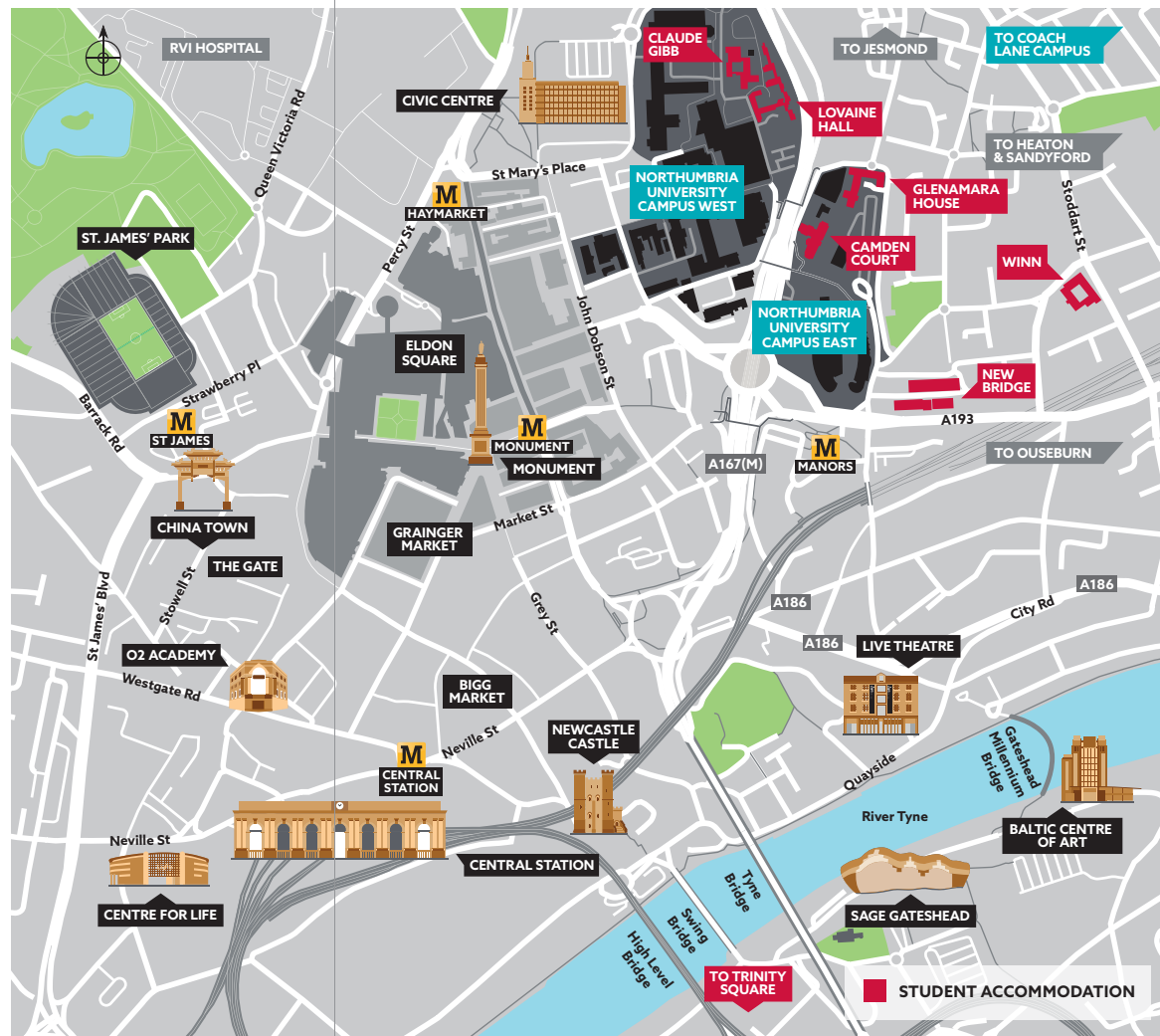


TRAVEL BY RAIL

Edinburgh - 1h 30m
Manchester - 2h 30m
London - 3 hours

TRAVEL BY AIR

Dublin - 1h 10m
Amsterdam - 1h 20m
Paris - 1h 50m
Dubai - 7h 15m





CIS Building, City Campus

We are passionate about our campuses and have invested almost £300 million since 2005 to provide new learning, working and social spaces to improve services and support for our students' welfare and education.



Coach Lane

City Campus

Our students study in a world-class campus that adds to an exceptional student experience.

We have invested in Student Central and City Campus Library, a £7 million Computer and Information Sciences Building, new Architecture Studios in Sutherland Building, a 24/7 computer hub in Northumberland Building and the refurbishment of the University Gallery.

Our City Campus is in the heart of Newcastle city centre, so it's the perfect place to make the most of your time at university.

Coach Lane Campus

This campus is home to our healthcare and education courses. Our state-of-the-art Clinical Skills Centre is a purpose built facility that gives our students valuable experience of real life situations through a simulated environment.

Located just three miles from the city centre, Coach Lane is an extensive site with its own Students' Union, Library and IT suites.

Coach Lane can be easily reached from City Campus by a free bus service seven days a week.

Camden Court

"I loved living in student accommodation as I was able to meet new people. I lived in Glenamara and two years on I still live with the girls I lived with in first year."

Isobel Tallentire | BA (Hons) History



YOUR NEW HOME

Living in halls is a once in a lifetime experience. From meeting new people, to unwinding in your room. Where you live forms a large part of your student life.

Trinity Square



We offer a wide range of options when choosing your accommodation including en suite rooms and catered accommodation. You can book your place as soon as you make Northumbria your firm choice. Much like choosing a seat in the cinema, you can pick your exact room from the building floorplans, giving you the opportunity to shape your experience from start to finish.

Glenamara House



The whole process can be completed online in minutes:

- Enter your interests to help your flatmates learn more about you,
- Browse the live building availability and learn more about potential flatmates,
- Select your exact building, floor, flat and room and finalise the booking online within minutes.

All of our residences are within walking distance of the campus and are easily accessed through local transport links.



It's not all work and no play. Far from it. You're in a city renowned for its friendliness, so why not get involved?



You'll never be short of things to do.

We have over 100 societies to join, from Surf and Snow Sports to Nursing and the Dance Society you're sure to meet your people here.

And if sport is more your game, Northumbria Sport is the perfect place to get fit and have fun. Whether you want to take part in challenges, join clubs and leagues, or just get your mind and body on track, you'll be welcomed with open arms.

UP YOUR GAME

Northumbria Sport offers sport, physical activity and personal development opportunities to students, and pride ourselves on getting as many students as active as possible.

We have a longstanding reputation for Student Sport, with 69 BUCS teams we are consistently ranked within the Top 30* overall, with many of our teams ranked in the Top 10*.

**British University and College Sport (BUCS)*



We offer opportunities in over 30 different sports across our Sport Clubs, Social Sports, and Campus Leagues, ensuring our students can access a wide range of opportunities to be active. Whether it's to try a new fun sport, meet new people, or represent the University in a sport you already love.

For students wishing to pursue their sporting talent whilst studying, we offer a range of Sport Scholarships and Support Services aimed at supporting student athletes to have a dual career.

Student Leadership is at the heart of what we do. We have hundreds of volunteer and paid internship opportunities available within areas such as sports coaching, club committees, marketing and strength and conditioning plus positions with our community partners.

If you're looking to stay fit, then why not become a Fitness Member at Sport Central? The facility boasts a six-lane 25m swimming pool, sauna, steam room and fitness centre with over 60 instructor led classes each week.

Zambia Project



If you want to make a difference or there's a cause close to your heart, there are lots of opportunities to become part of our community of volunteers.

At Northumbria, we roll up our sleeves. Students and staff alike get involved in a wide range of volunteer projects. Choose from things like sports, animals, teaching, IT, arts or helping the elderly. You can get involved in everything from helping thousands of freshers to move into halls each September, to being trained as a mentor to help other students, being a sustainability ambassador or representing students as a Programme Rep.

Volunteering helps you stand out, with many employers saying they prefer candidates with a degree plus experience. So you won't just be helping others. You'll be helping yourself.





Our Students' Union makes a positive impact on the lives of all our students.



At Northumbria University, the Students' Union (NSU) is the centre of student life on our campus, with outstanding facilities made up of bars, entertainment venues, coffee shops, workspaces, chill out zones and meeting rooms.

NSU is represented at City, Coach Lane, London and Amsterdam Campuses. It is run by the Sabb Team, who have been elected by students to represent you on all aspects of your university experience.



The Greenhouse Café

Here's a taster of what you can do at NSU:

- Enjoy great value food & drink at their on-campus bar, Habita, or The Greenhouse Café
- Join one of over one hundred societies or get involved with volunteering
- Get support through our free, independent advice service. We offer everything from advice with academic appeals and academic misconduct to housing advice and Personal Extenuating Circumstances (PECs)
- Attend numerous gigs each year – previous acts have included Frank Turner and Blossoms
- Get discounted Starbucks

 @NorthumbriaSU

 /mysnu

 NSU/TV

 @Northumbriastudentsunion

THIS IS YOUR TIME

Make it count.

Join a talented, global learning community filled with ambitious, inquisitive people – just like you.

Northumbria is the place to study courses shaped by world-leading research and created in consultation with students, employers and professionals, statutory and regulatory bodies. Here, you'll learn to question, analyse, challenge, innovate and make an impact.

"This is your opportunity to develop personally and professionally, transforming who you are, what you do and how you do it, in the best research-rich learning environment."

Professor Tom Lawson | Deputy Vice-Chancellor

We play to your strengths.

At Northumbria, everything we do is about you. We're connected, so you'll get the chance to work with global companies, study abroad, expand your horizons, stretch your knowledge and build your CV.

Our inspirational academics will equip you with everything you need to fulfil your potential – professionally and personally. Your learning experience will be tailored to ensure you're ready for life beyond graduation – for a future yet to be explored.





Northumbria has a long and successful relationship with a number of professional and statutory bodies accrediting a range of our courses.

Studying a course with accreditation strengthens your employability and may provide a license to work in a particular discipline or specialist area.

Working with over 60 Professional, Statutory, and Regulatory Bodies, over 400 of our courses are accredited and are subject to stringent compliance processes such as annual review and monitoring, inspection, and periodic reaccreditation. This ensures course curriculum is compliant and up to date with professional standards.

Academic staff hold professional registrations where required and are subject to annual registration requirements.





SUPPORT FOR YOU



Being a student can be one of the best experiences of your life, but we understand that sometimes it can also be a challenge. Students and their wellbeing are at the forefront of everything we do here at Northumbria.

As well as the academic support you'll receive from tutors, our dedicated and professional services – which hold the Customer Service Excellence Award – provide advice and support at every stage of your student journey. From money matters and plans for the future, to keeping your studies on track, visas and international issues,

your health and wellbeing and much more, our support teams are there every step of the way.

Over half of all Northumbria students use our services in their academic life. You will even be able to access our Student Support teams before you're enrolled in the University.

"University is a huge step and the tutors and support teams have helped me adjust to the new environment of life at university. They make you feel comfortable to go and ask them anything."

Patience Moyo | BSc (Hons) Quantity Surveying



"Student Central is in the heart of our campus. Students can access advice from Ask4Help and books in the Library collection. It is also a great place to study collaboratively, accessing online learning in the hub spaces and independent study is made easy in the quiet zones."

Emma Collier | Northumbria University Students' Union President

Student Central can be found at our City Campus Library and Coach Lane Library, providing a focal point for students in the heart of our Campus.

Here you will find the Ask4Help service, the first point of contact for all student support enquiries. Students can contact the team in person, by phone or via their Student Portal to raise queries and seek support or guidance on a range of topics.

At City Campus, the main Student Central is located within the University Library in a purpose-designed communal space. This includes our Student Skills Centre, where you can access a wide variety of group support, presentations and training sessions, plus private consultation rooms and access to experts in a wide range of fields.

Our state of the art, 24/7 Digital Commons is also adjacent to Student Central.

Ask4Help can provide support on:

- Accommodation
- Applying for jobs
- Assessments
- Change of student status
- Choosing a career
- Counselling and mental health
- Course information
- Disability and specific learning difficulties
- Learning and research skills
- Money and finance
- Placements
- On-course support
- Using the Library
- Visas and welfare



LIBRARY

Northumbria boasts one of the best academic libraries in the UK. We hold the Customer Service Excellence accreditation, with a collection of just under half a million print books, over a million electronic books and over 82,000 electronic journals, to help support apprentices, students and researchers during their studies.

"The library is like my second home. There are different floors for the type of study you are doing. I usually go with my course mates and like to discuss our ideas, so we work in the group study area."

Mark Robertson | MSc Health Psychology

Wherever, and whenever, you choose to study you'll find the University Library has the resources and services you need. Our online Reading List service ensures that you have access to the print and digital material needed for your programme modules, and Library Search, your single point of discovery for exploring the Library collection, will enable your independent study by allowing you to access resources within and outside the Library collection. We also have an extensive collection of online learning skills guides that can help you become an effective, independent scholar.

On campus, our learning spaces are inspiring places where you can think, read, write and learn. Whether you're looking for a quiet place to work or a more social area to collaborate, there are over 2,300 study spaces in our City Campus Library so we're confident you'll find the ideal area for you. There are also dedicated spaces in our libraries for postgraduate students.

Our University Library operates generous opening hours and Ask4Help are always on hand to support you with any queries. You can also take advantage of our academic support sessions to help you improve your academic writing, research and presentation skills.

The Law Practice Library, based in the Northumbria Law School, is home to a reference collection of law resources, including textbooks, law reports and journals. The collection primarily supports the Legal Practice Course (LPC) and the Bar Course.

The University Library Digital Commons is located on the ground floor of Northumberland Building. It provides over 160 learning spaces, including spaces with PCs/Macs and collaborative tables for group work.

Coach Lane Library provides learning spaces over three floors and offers silent, quiet and collaborative spaces to enable you to find your perfect learning space.



"Receiving support from Student Life and Wellbeing improved my self-esteem and my approach towards my studies. It is one of the most valuable things I've done throughout my time at university."

Student | Faculty of Arts, Design and Social Sciences

Our Student Life and Wellbeing service is always on hand to support you throughout your student journey.

Before you apply, our specialist advisers are here to explain your funding options, including information on scholarships, loans and grants. They can also advise you on how to apply for extra support, such as childcare.

We have a dedicated Inclusion Team providing tailored support for under-represented student groups such as care leavers, while our Counselling and Mental Health Team provides support for those with personal, emotional or mental health issues.

If you have a disability, we can explain how you can be assessed for support, so that any help you need can be put in place as early as possible. This support will continue throughout your studies and we can provide you with tailored advice on any disability or specific learning difficulty, such as dyslexia.

If you're an international student, we offer immigration and visa advice together with information on working in the UK.

Those flying into Newcastle International Airport can register for our free Meet and Greet service, which means someone will meet you and take you to your accommodation when you arrive.

Our services include:

- Financial support
- International student support
- Counselling and mental health support
- Welfare and health support
- Chaplaincy and faith advice



Higher Education is an important investment in your future. At Northumbria we offer a range of support packages to ease the financial commitment of studying at university, allowing you to focus more on your studies.

Tuition Fees

All of our tuition fees can be found on our website. You can spread the cost of the tuition over the year through our payment plans*.

You can find payment plan information here: **pathway**.
northumbria.ac.uk/dates-and-fees

Support Packages

There are a range of scholarships, bursaries and financial aid available depending on your circumstances. Alumni can also receive a 20% discount on their annual tuition

fees for a postgraduate course. For further information on what is available and how to apply please visit the website.

Managing Your Money

Learning to manage your money whilst studying is an integral part of university life. Graduate Futures, our careers and employment service, can support you in finding part-time work, whilst our Student Life and Wellbeing teams can provide advice and guidance on handling your finances.

*Not applicable to Graduate Certificate in Business



We strive to be the best, but don't just take our word for it. Our rankings show that we deliver on our promises.

**Ranked 7th in the UK
for Interior Design**

Guardian University Guide 2023

**Ranked 5th in the UK
for Chemistry**

Guardian University Guide 2023

**Ranked 7th in the UK
for Fashion and Textiles**

Guardian University Guide 2023

**Ranked 1st in the UK
for Children's Nursing**

Guardian University Guide 2023

**Ranked 7th in the UK
for Civil Engineering**

Guardian University Guide 2023

**Ranked 11th in the UK
for Product Design**

Guardian University Guide 2023

**Ranked 5th in the UK
for Forensic Science**

Guardian University Guide 2023

**Ranked 7th in the UK for
Construction, Surveying
and Planning**

Guardian University Guide 2023

**Ranked 10th in the UK
for Hospitality, Leisure,
Recreation and Tourism**

Times Good University Guide 2023

**Ranked 6th in the UK
for Building**

Times Good University Guide 2023

**Ranked 4th in the UK
for Information Systems
and Management**

Times Good University Guide 2023

**Ranked 5th in the UK
for Physiotherapy**

Times Good University Guide 2023

**Ranked 6th in the UK for
Counselling, Psychotherapy,
and Occupational Therapy**

Complete University Guide 2023

CAREERS AND EMPLOYMENT



Throughout your time at Northumbria, our Graduate Futures team will work with you to help you get that job, start your own business, or apply for further study.

Our services include:

- Careers guidance
- Advice on CVs, applications and portfolios
- Better use of LinkedIn
- Networking through career fairs and other opportunities to meet recruiters
- Free start-up support
- Enterprise skills workshops and events

All of this will maximise your opportunities when you graduate.

Get ahead with tools for success

Use the interactive resources in Careers Online, your employability hub, to help you explore your career options, research employers and write effective applications.

Find job opportunities

Employers targeting Northumbria students and graduates advertise vacancies on JobsOnline. You'll get exclusive access to all of these, including graduate jobs, student and graduate internships, part-time work, volunteering and work experience opportunities.

PATHWAY PROGRAMMES

Our Pathway programmes are specifically designed to develop our students' skills to a level where they can successfully study one of our degree courses in their chosen subject.

Visit our website and use our course search to find out all you need to know about your course – from modules, country-specific entry requirements and upcoming dates and deadlines.

Once you know which course you're interested in, how do you know what you need to achieve to get here? On the next page we have highlighted the entry points we would typically ask for. These requirements are provided as a guide to our standard offer levels and we may take into account alternative equivalent qualifications.

At Northumbria, we have a flexible and inclusive approach to assessing potential candidates. We know there are many different qualifications, skills and experiences which can all contribute to your application. We make an offer based on the individual and our published entry requirements are typical of our standard offer, so just think of them as a guideline.

Feel free to contact us about any queries that you may have. A member of our dedicated recruitment team will be happy to help.

Contact us

T: (+44) 191 640 3897

W: pathway.northumbria.ac.uk/enquire

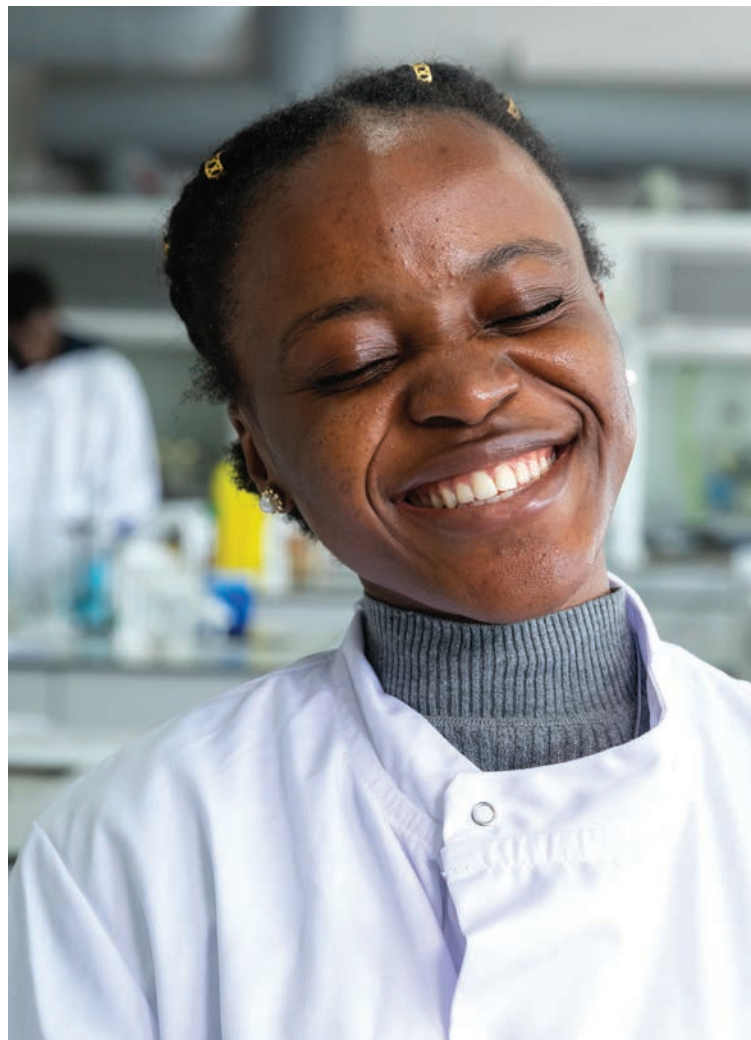


Pathway Programmes

Courses	Entry Requirements	English Language Requirements (from a UKVI Approved Centre)
International Foundation Programme	GCSE/IGCSE – 5 passes at A-C.	6 months: IELTS 5.5, with no single element below 5.0
Art, Design and Media		9 months: IELTS 5.0, with no single element below 4.0
Applied Science		12 months: IELTS 4.5, with no single element below 4.0
Business and Law		
Computing		
Engineering		
Humanities and Social Sciences		
International Year One – Business	Good High School grades or equivalent.	IELTS 5.5, with no single element below 5.5
Pre-Master's	Third class, pass or ordinary degree from a UK university, or equivalent.	IELTS 5.5, with no single element below 5.5, or equivalent, will study the 2-semester Graduate Diploma
Business		IELTS 6.0, with no single element below 5.5, or equivalent, will study the 1-semester Graduate Certificate
Computing		
Engineering		

Find out more:

For information on course content, start dates and fees make sure you visit northumbria.ac.uk/pathway



International Foundation Programme



Level	Foundation - NQF Level 3		
Start dates	March	October and January	July and October
Duration	6 months	9 months	12 months
Tuition fee	£11,000	£16,500	£20,500
Mode of study	Full-time – seminars, lectures, workshops, labs and tutorials		
Class hours per week	22 – 24 hours		
Average class size	16 – 20		
Assessment	Coursework – including portfolios, essays, presentations and in-class tests (Applied Science includes exams)		

The International Foundation Programme offers an excellent opportunity to fully prepare for your undergraduate studies and adjust to life in the UK.

You will develop English language skills relevant to your subject, studying alongside other international students and guided by academics, tutors and support staff with experience in supporting international students in this important transition.



Prepare for UK undergraduate studies



Build your intercultural skills and integrate with UK student life



Various start dates depending on English level



6 subject specific pathways, guaranteeing you entry to one of over 90 undergraduate degrees at Northumbria University



Study in a fully embedded Pathway College where you're part of the university campus from day one

"So far my experience has been absolutely perfect. I have really enjoyed the IT and intercultural communication modules of the course. The teaching is very engaging, in the reading class the teachers help me learn about the language which I find really useful. I am dreaming of working in the Ministry of Defence. I feel my course could help me achieve this dream."

Farhad Althuwaini - Saudi Arabia | *International Foundation Programme*

International Foundation Programme



Example Modules	
Stage 1 IELTS 5.0 (study for 1 term) IELTS 4.5 (study for 2 terms)	English for University Studies (0 credits)
Stage 2 You will then progress onto the following modules	<ul style="list-style-type: none"> • English for Foundation • Academic Practice • Project
Stage 3 Pathway specific modules <i>All single modules are 20 credits unless otherwise stated</i>	Applied Science <ul style="list-style-type: none"> • Introduction to Biology • Ethical Practices in Action • Introduction to Chemistry
	Art, Design and Media <ul style="list-style-type: none"> • Art, Design and Media Specialism Development • Digital Design Skills and Practice • Introduction to Theory and Practices in Art, Design and Media
	Business and Law <ul style="list-style-type: none"> • Contemporary Business Issues • Entrepreneurship and Innovation in Business • Ethical Practices in Action
	Computing <ul style="list-style-type: none"> • Digital Design Skills and Practice • Introduction to Computing and Coding • Information Systems Design and Performance
	Engineering <ul style="list-style-type: none"> • Applied Algebra and Trigonometry • Engineering Skills • Introduction to Engineering Design and Problem Solving
	Humanities and Social Sciences <ul style="list-style-type: none"> • Introduction to Cross Cultural Communication • Introduction to Humanities and Social Sciences • Ethical Practices in Action

Further study

Upon successful completion you can progress onto one of over 90 undergraduate degrees at Northumbria University. For more information on progression, see page 70.

International Year One - Business



Level	NQF Level 4 – First year of an undergraduate degree
Start dates	October and January
Duration	9 months
Tuition fee	£16,500
Mode of study	Full-time – seminars, lectures, tutorials and workshops.
Class hours per week	24 hours
Maximum class size	20
Assessment	Coursework and exams – including portfolios, essays, reports, reflection, exams, poster presentation and group work

The International Year One – Business is a degree preparation programme for international students who want to study a Northumbria University undergraduate Business degree, but need additional support to gain direct entry into year two.

The programme is the equivalent of the first year of an undergraduate degree and on successful completion of the International Year One, you will join directly into year two of your chosen programme of study.



Progress to Northumbria University's double AACSB-accredited Business School



Equivalent to year one of an undergraduate degree



More support and teaching hours than a standard first year undergraduate degree



Build your intercultural skills and integrate with UK student life



Study a specialist module applicable to your target degree



Complete your degree in 3 years (4 years with a work placement year)

"There are a wide range of business disciplines taught in this course which allows you to explore each field and learn more about what career you want to continue with."

Ruzimukhammad Marufov - Uzbekistan | International Year One - Business

International Year One - Business

Example Modules	
Core Modules: <i>All modules are 20 credits unless otherwise stated.</i>	<ul style="list-style-type: none">• Introducing Marketing• Business Interaction with Society and the Economy• Financial Information for Decision Making• Business Analysis for Decision Making• Academic Business Skills
Optional Modules: You can study one of the following depending on your target degree:	<ul style="list-style-type: none">• Introducing Entrepreneurship• Managing People and Organisations• Study and Consultancy Skills for Marketing• Introducing Tourism and Events

Further study

Upon successful completion you can progress onto the second year of a range of business undergraduate degrees at Northumbria University. For more information on progression, see page 70.



Pre-Master's



Level	Pre-Master's - NQF Level 6	
Start dates	September, May	January, May
Duration	1 semester	2 semesters
Tuition fee	£6,750	£10,000
Mode of study	Full-time – seminars, lectures and tutorials	
Class hours per week	15–20 hours	
Average class size	12–15	
Assessment	A mix of portfolios, coursework including essay writing, reading and writing skills examination	

Our Pre-Master's are specifically designed to support international students prepare for postgraduate studies on one of our Master's programmes.

You will study a combination of subject-specific modules alongside English language preparation, to enhance your study, employability and academic skills necessary to successfully progress onto your postgraduate studies.



Bridge the skills gap: designed to help you meet the required entry criteria for an MSc programme



Prepare for postgraduate study: build core subject knowledge and boost your confidence and build academic skills, such as academic writing, critical thinking skills and understanding of research



Develop your English language skills: improve your written and spoken English language skills



Access to university learning support: you will have access to sessions facilitated by library staff on core academic skills and a wealth of online support materials



Guaranteed progression: 3 subject specific pathways, guaranteeing you entry on one of our many postgraduate degrees in Newcastle or London (subject to a 50% pass rate)

Pre-Master's

Modules		
All students will study		
Business pathway	Computing pathway	Engineering pathway
Developing Academic Skills for Business and Management	Academic Research Skills for Postgraduate Studies	
<ul style="list-style-type: none">• Strategy in an Organisational Context• Business Environment and Strategy	<ul style="list-style-type: none">• Implementing and Managing IT Projects• Computer Information Systems	<ul style="list-style-type: none">• Advanced Engineering Modelling and Problem Solving• Advanced and Applied Mathematics for Engineers

2-semester students will also study
<ul style="list-style-type: none">• Communicative Skills in Speaking and Listening• Communicative Skills in Reading and Writing• Applied Language Development

Further study

Upon successful completion of the Pre-Master's with a 50% pass mark, you can progress on to one of our suite of Master's programmes at Northumbria University. For more information on progression, please see page 74.





IT STARTS HERE



Due to the variety of our pathway programmes, you can progress onto almost all of the undergraduate degrees offered here at Northumbria University.

On the following pages you will see the undergraduate courses that are available to you, along with the pathway programme that feeds into them. When you find your progression undergraduate degree, you will also see which of our pathway programmes you will need to study, in order to progress onto it.

International Foundation Programmes

To progress onto the **first year** of your chosen undergraduate degree you must achieve at least 40% on this programme.

International Year One

To progress onto the **second year** of your chosen undergraduate degree you must achieve at least 40% on this programme.

Pre-Master's

To progress onto your chosen postgraduate degree you must achieve at least 50% on this programme. Please see page 74 to see the postgraduate courses that are available to you.

UNDERGRADUATE COURSES 2023/24

APPLIED SCIENCES

Biochemistry BSc (Hons)	■
Biology (with optional pathways in Biotechnology and Human Neurobiology) BSc (Hons)	■
Biomedical Science BSc (Hons)	■
Chemistry BSc (Hons)	■
Criminology and Forensic Science BSc (Hons)	■
Food Science and Nutrition (with optional pathway in Human Nutrition) BSc (Hons)	■
Forensic Science BSc (Hons)	■

ARCHITECTURE AND BUILT ENVIRONMENT

Architecture BA (Hons)	●
Building Surveying BSc (Hons)	◆
Construction Management BSc (Hons)	◐
Interior Architecture BA (Hons)	●
Quantity Surveying BSc (Hons)	◆
Real Estate BSc (Hons)	◆

ARTS

Film and Television Production BA (Hons)	●
Fine Art BA (Hons)	●
Mass Communication BA (Hons)	◆
Mass Communication with Advertising BA (Hons)	◆
Mass Communication with Business BA (Hons)	◆
Mass Communication with Public Relations BA (Hons)	◆

Accounting BSc offers 42 individual exemptions across six of the world's largest professional accounting bodies

All course information is correct at the time of printing.
To ensure you have the most up-to-date information please visit our website.



BUSINESS

Accounting BSc (Hons)*	▲
Business and Human Resource Management BA (Hons)	★▲
Business Management BA (Hons)	★▲
Business and Marketing BA (Hons)	★▲
Business and Supply Chain Management BA (Hons)	▲
Economics BSc (Hons)	▲
Economics and Finance BSc (Hons)	▲
Entrepreneurship BA (Hons)	★▲
Finance and Investment Management BSc (Hons)	▲
International Business Management BSc (Hons)	▲
Law LLB (Hons)*	▲
Marketing BA (Hons)	▲
Tourism and Events Management BA (Hons)	★▲

COMPUTER AND INFORMATION SCIENCES

Artificial Intelligence BSc (Hons)	◆
Business Computing BSc (Hons)	◆
Computer Science BSc (Hons)	◆
Data Science BSc (Hons)	◆
Games Computing BSc (Hons)	◆
Networks and Cyber Security BSc (Hons)	◆

ENGLISH, HISTORY, AMERICAN STUDIES AND MUSIC

American Studies BA (Hons)	◆
English Language and Literature BA (Hons)	◆
English Language Studies BA (Hons)	◆
English Literature BA (Hons)	◆
English Literature and American Studies BA (Hons)	◆
English Literature and Creative Writing BA (Hons)	◆
English Literature and History BA (Hons)	◆
History BA (Hons)	◆
History and American Studies BA (Hons)	◆
History and Politics BA (Hons)	◆

*Additional entry requirements apply.

■ Applied Science ● Art, Design and Media ▲ Business and Law ◆ Computing

◐ Engineering ◆ Humanities and Social Sciences ★ International Year One

Undergraduate courses 2023/24

GEOGRAPHY AND ENVIRONMENTAL SCIENCES

Environmental Science <i>BSc (Hons)</i>	◆
Geography <i>BA (Hons)</i>	◆
Geography <i>BSc (Hons)</i>	◆
Physical Geography <i>BSc (Hons)</i>	◆

MECHANICAL AND CONSTRUCTION ENGINEERING

Automotive Engineering <i>BEng (Hons)</i>	☾
Civil Engineering <i>BEng (Hons)*</i>	☾
Mechanical Engineering <i>BEng (Hons)</i>	☾

NORTHUMBRIA LAW SCHOOL

Law LLB <i>LLB (Hons)*</i>	▲
----------------------------	---

NORTHUMBRIA SCHOOL OF DESIGN

3D Design <i>BA (Hons)</i>	●
Design for Industry <i>BA (Hons)</i>	●
Fashion <i>BA (Hons)</i>	●
Fashion Communication <i>BA (Hons)</i>	●
Fashion Design and Marketing <i>BA (Hons)</i>	●
Graphic Design <i>BA (Hons)</i>	●
Interior Design <i>BA (Hons)</i>	●

PHYSICS AND ELECTRICAL ENGINEERING

Electrical and Electronic Engineering <i>BEng (Hons)</i>	☾
Physics <i>BSc (Hons)*</i>	■
Physics with Astrophysics <i>BSc (Hons)*</i>	■

PSYCHOLOGY

Psychology (with optional pathways in Business, Clinical, Experimental, Forensic or Health Psychology) <i>BSc (Hons)</i>	◆
Psychology with Criminology <i>BSc (Hons)</i>	◆

All course information is correct at the time of printing.
To ensure you have the most up-to-date information please visit our website.

SOCIAL SCIENCES

Construction Management <i>BSc (Hons)</i>	☾
Criminology <i>BSc (Hons)</i>	◆
Criminology and Sociology <i>BSc (Hons)</i>	◆
International Relations and Politics <i>BA (Hons)</i>	◆
Professional Policing/Humanities and Social Sciences <i>BSc (Hons)</i>	◆
Sociology <i>BSc (Hons)</i>	◆

SOCIAL WORK AND COMMUNITY WELLBEING

Childhood and Early Years Studies <i>BA (Hons)*</i>	◆
Guidance and Counselling <i>BA (Hons)*</i>	◆
Health and Social Care <i>BA (Hons)*</i>	◆

SPORTS EXERCISE AND REHABILITATION

Sport Coaching <i>BSc (Hons)</i>	◆
Sport, Exercise and Nutrition <i>BSc (Hons)</i>	◆
Sport and Exercise Science <i>BSc (Hons)</i>	■
Sport Management <i>BSc (Hons)</i>	◆

*Additional entry requirements apply.

■ Applied Science ● Art, Design and Media ▲ Business and Law ◆ Computing

☾ Engineering ◆ Humanities and Social Sciences ★ International Year One

POSTGRADUATE COURSES 2023/24

On this page you can see the postgraduate courses that are available to progress onto, beneath the Pre-Master's programme that feeds into them.

PRE-MASTER'S IN BUSINESS

Business Analytics *MSc*

Business with Hospitality and Tourism Management *MSc*

Business with Human Resource Management *MSc*

Business with Logistics and Supply Chain Management *MSc*

Business and Management *MSc*

Construction Management with Building Information Modelling *MSc*

Construction Project Management with BIM *MSc*

Digital Marketing *MSc*

Engineering Management *MSc*

Entrepreneurship and Innovation Management *MSc*

Global Logistics, Operations and Supply Chain Management *MSc*

International Business Management *MSc*

International Development *MSc*

International Finance and Investment *MSc*

Marketing *MSc*

Project Management *MSc*

Psychology *MSc*

PRE-MASTER'S IN COMPUTING

Computer Science *MSc*

Data Science *MSc*

Information Science (Data Analytics) *MSc*

PRE-MASTER'S IN ENGINEERING

Electrical Power Engineering *MSc*

Mechanical Engineering *MSc*

Microelectronic and Communications Engineering *MSc*

Renewable and Sustainable Energy Technologies *MSc*

All course information is correct at the time of printing. To ensure you have the most up-to-date information please visit our website.



INTERNATIONAL APPLICANTS

This is a quick guide on how to apply for a course at Northumbria. For more details visit our website: pathway.northumbria.ac.uk/how-to-apply

Remember:

Research universities and attend our recruitment visits in your country. For more details visit northumbria.ac.uk/nuworldwide

HOW DO YOU APPLY?

Apply directly on our website northumbria.ac.uk/pathway through an agent or with our Regional Office in your country

Your offer will be emailed to you or your educational representative

Send your application with supporting documents, such as: passport details, references and visa history

Check your applicant portal regularly for important information

ACCEPT YOUR OFFER

GET YOUR RESULTS
Met your conditions?

Receive information on how to book accommodation

CONGRATULATIONS YOU'RE COMING TO NORTHUMBRIA!

If required, receive your CAS

If required, pay your deposit

Book your free Meet and Greet service to take you direct to your accommodation from the airport

Complete self-registration online before you arrive

WELCOME TO NORTHUMBRIA!

ATTEND ENROLMENT, INDUCTION AND WELCOME WEEK

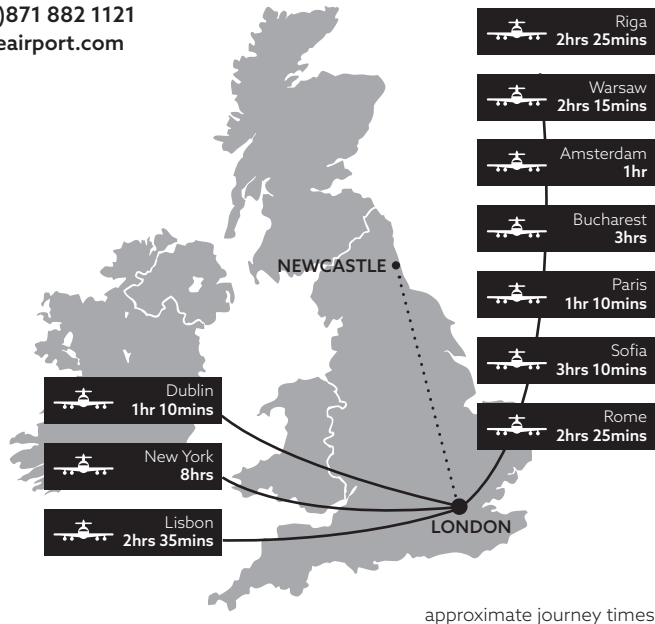
LOCATION

Whether travelling by air, sea, rail or road, Northumbria University is easily accessible.

Air

Newcastle has its own international airport operating both domestic and international flights to cities including London, Birmingham, Bristol, Cardiff, Aberdeen, Dublin, Belfast, Southampton, Amsterdam, Paris, Barcelona, Prague, Dubai and Copenhagen. London airports service many other parts of the world and from there it is a short 3 hour rail journey to Newcastle.

Newcastle International Airport
T: +44 (0)871 882 1121
newcastleairport.com



Sea

Car ferry and passenger services operate to Tyneside from Holland. The North Shields International Ferry Terminal at Royal Quays (Tyne Commission Quay) is seven miles East of Newcastle. Bus services run from the terminal building to the city centre.

DFDS Seaways
T: +44 (0)871 522 9955
dfdsseaways.co.uk

Rail

Rail services operate from many cities. Approximate travelling times are:

Birmingham	3 hours
Edinburgh	1.5 hours
Glasgow	3 hours
London	3 hours
Manchester	2.5 hours
Sheffield	2 hours

Rail Enquiries
T: +44 (0)8457 484 950
nationalrail.co.uk

Road

The region is particularly well served by the A1(M) from London in the South and Edinburgh in the North, the A19 from York, the A69 from Carlisle and the M6 from the South West and West.

Coach

National Express operates services connecting Newcastle to the rest of the UK. Approximate travelling times are:

Birmingham	5 hours
Edinburgh	3 hours
Glasgow	4 hours
London	6 hours
Manchester	4 hours
Sheffield	3 hours

National Express
T: +44 (0)871 781 8178
nationalexpress.com

CONTACT US

There are a range of ways you can get in touch. Please contact the relevant team or message us via our other channels.

 Live chat across our website

 @NorthumbriaUni

 /NorthumbriaUni

 NorthumbriaUni

 @NorthumbriaUni



Enquiries: pathway.northumbria.ac.uk/enquire

Course Information: pathway.northumbria.ac.uk/courses

Accommodation: pathway.northumbria.ac.uk/accommodation

Campus Tour: pathway.northumbria.ac.uk/tour

International Students Information: pathway.northumbria.ac.uk/int

OVERSEAS OFFICES

Thailand - Bangkok

Also responsible for Indonesia, Cambodia, Myanmar, Pakistan and Vietnam.

Northumbria University
Thailand Office, 283/46 Unit 1001-1,
10th Floor, Home Place Building,
Sukhumvit 55 (Thonglor 13),
Bangkok 10110, Thailand

T: (+66) 2044 6430
E: thaioffice@northumbria.ac.uk

P. R. China - Beijing

Northumbria University
China Office, Room 1610, Block B,
Winterless Center,
Jia 1, Xi Da Wang Road
Chaoyang District,
Beijing 100026, P.R.China

T: (+86) 10 6538 8135
F: (+86) 10 6538 8136
E: teresa.zhao@northumbria.ac.uk

Malaysia

Also responsible for Hong Kong SAR, the Philippines, Singapore, Taiwan and South Korea.

Northumbria University
Malaysia Office, A-8-3, 8th Floor,
Northpoint Building @ Midvalley City,
1 Jalan Syed Putra Utara,
59200 Kuala Lumpur, Malaysia

T: (+60) 3 2287 8080
F: (+60) 3 2287 8282
E: malaysiaoffice@northumbria.ac.uk

Nigeria

Northumbria University
Pathway College, 5 Mekong,
Wuse, Abuja, Nigeria

T: (+234) 9065 235553
E: qahe.africa@qa.com

India

Also responsible for Bangladesh and Nepal.

308, Plot No-2, Sector-5,
Aggarwal Tower, MLU Plaza,
Dwarka, New Delhi – 110075, India

T: (+ 91) 999 959 8771
E: vikas.sharma@northumbria.ac.uk

Colombia

M: (+44) 7367 193 956
T: (+57) 312 361 9711
E: juliana.cortes@northumbria.ac.uk

All programmes included in this prospectus are delivered as part of a partnership between Northumbria University and QA Higher Education – a UK higher education provider. All pathway programmes detailed are validated by the University and taught by QA Higher Education and University staff.

Northumbria University and QA Higher Education are committed to being equal opportunities education providers and will therefore make reasonable adjustments for disabled applicants and students.

The information given in this publication is accurate at the time of going to print in January 2023 and the University and QA Higher Education will use all reasonable efforts to deliver the programmes as described. The University and QA Higher Education reserve the right to withdraw or change the programmes or programme combinations included in this prospectus. These changes will only be made as a result of UK legal compliance, minimum student number requirements or for course validation reasons and applicants will be contacted by the University or QA Higher Education at the earliest opportunity in the instance of these changes occurring. Please check the website for up-to-date information on our programmes.

V1 01/23



Northumbria
University
NEWCASTLE

In partnership with



northumbria.ac.uk/pathway