

DISCOVER YOUR TOMORROW



WELCOME TO THE UNIVERSITY OF SOUTH WALES



Search: USW International



新浪微博
weibo.com



THE INTERNATIONAL TEAM

We will help with questions about studying at USW and we provide support every step of the way, from your application to graduation.

Find out about USW and meet our friendly team online, in your country, or with a visit to our campuses in the UK.

IN YOUR COUNTRY

We have team members and trusted representatives in countries all over the world. They can help you with entry requirements, your application, scholarships, accommodation and visa applications.

Visit the 'Your Country' section of our website for details: www.southwales.ac.uk/international

USW welcomes 2,500 students to its global community each year, from over 200 countries all over the world.



SEE OUR CAMPUSES

We hold events online, bringing our campuses to the comfort and convenience of your office or home. You can register for our next event online: myusw.southwales.ac.uk/events

We also hold open days at our campuses in the UK. You can find out more and book your place online: www.southwales.ac.uk/visitusw

If you cannot attend an open day but would still like to visit campus, please contact us and we'll be happy to arrange a visit. Email: international@southwales.ac.uk

OVER 170-YEAR TRADITION OF EDUCATION DATING BACK TO 1841.

Pontypridd Campus, Glyntaff



USW IS IN THE UK, WITH CAMPUSES IN AND AROUND CARDIFF, THE CAPITAL CITY OF WALES.



Cardiff Campus



Newport Campus

CONTENTS

About USW	6
Careers	10
Work placements	10
Location	12
Campuses	16
COURSES	22
International Pathway College at USW	50
Fees and scholarships	52
Living costs	55
Entry requirements	56
How to apply	58
English language courses	60
Student support	62
Visas and immigration	64
Arriving at USW	66
Information for parents	68
Accommodation	70
Students' Union	72
USW Sport	74
What next?	78

USW SPORT

We have some of the best facilities in the UK.

PAGE 74



STUDENT FINANCE

We make studying at USW affordable with scholarships and tuition fee payment plans.

PAGE 52

Search:
USW International



新浪微博
weibo.com





STUDENT SUPPORT

For wellbeing and advice, you'll find a network of people ready to help.

PAGE 62



VISAS AND IMMIGRATION

Our Immigration and International Student Advice team can answer your questions any time.

PAGE 64





**FIND YOUR
TOMORROW**

A course at USW is more than just a qualification. We create graduates who are ready for tomorrow.

COURSES

We offer smaller class sizes with exceptional support from lecturers and student support departments. What you learn is informed by employers and what happens in the workplace. You'll gain relevant skills and hear from people with real work experience in your field.

Many courses at USW have been accredited by professional bodies – this means they are of the highest standard and can lead to professional qualifications too.

See our courses



PROFESSIONAL SKILLS

Our students learn about their profession in environments that recreate the workplace, using the same equipment and software they'll find there too. This ensures you will build confidence and be ready for the workplace.

GENEROUS SCHOLARSHIPS

USW offers generous scholarships for international and EU students, as well as competitive tuition fees and flexible payment plans. Turn to page 54.



Civil Engineering students testing concrete in the Materials Testing Laboratory, USW Pontypridd

RESEARCH THAT MATTERS

Research at USW makes a difference in the real world. We change lives and our world for the better. You'll be taught by lecturers who are at the forefront of their fields, giving you a window to the latest thinking and developments.



“

OUR STUDENTS ARE AT THE HEART OF EVERYTHING WE DO. WE MAKE A POSITIVE DIFFERENCE TO THE LIVES OF OUR STUDENTS, EQUIPPING THEM WITH THE SKILLS THEY NEED FOR TOMORROW.

Dr Ben Calvert
Vice-Chancellor





**MANY OF OUR COURSES
START IN FEBRUARY AS
WELL AS SEPTEMBER.**



USW FAMILY

At USW you'll make friends for life and try lots of new things. Thousands of students come here every year, so you'll be part of a great community. This doesn't end when you graduate – you will automatically become a lifetime member of the University and join a global network of over 200,000 alumni in more than 200 countries.

Search: USW International

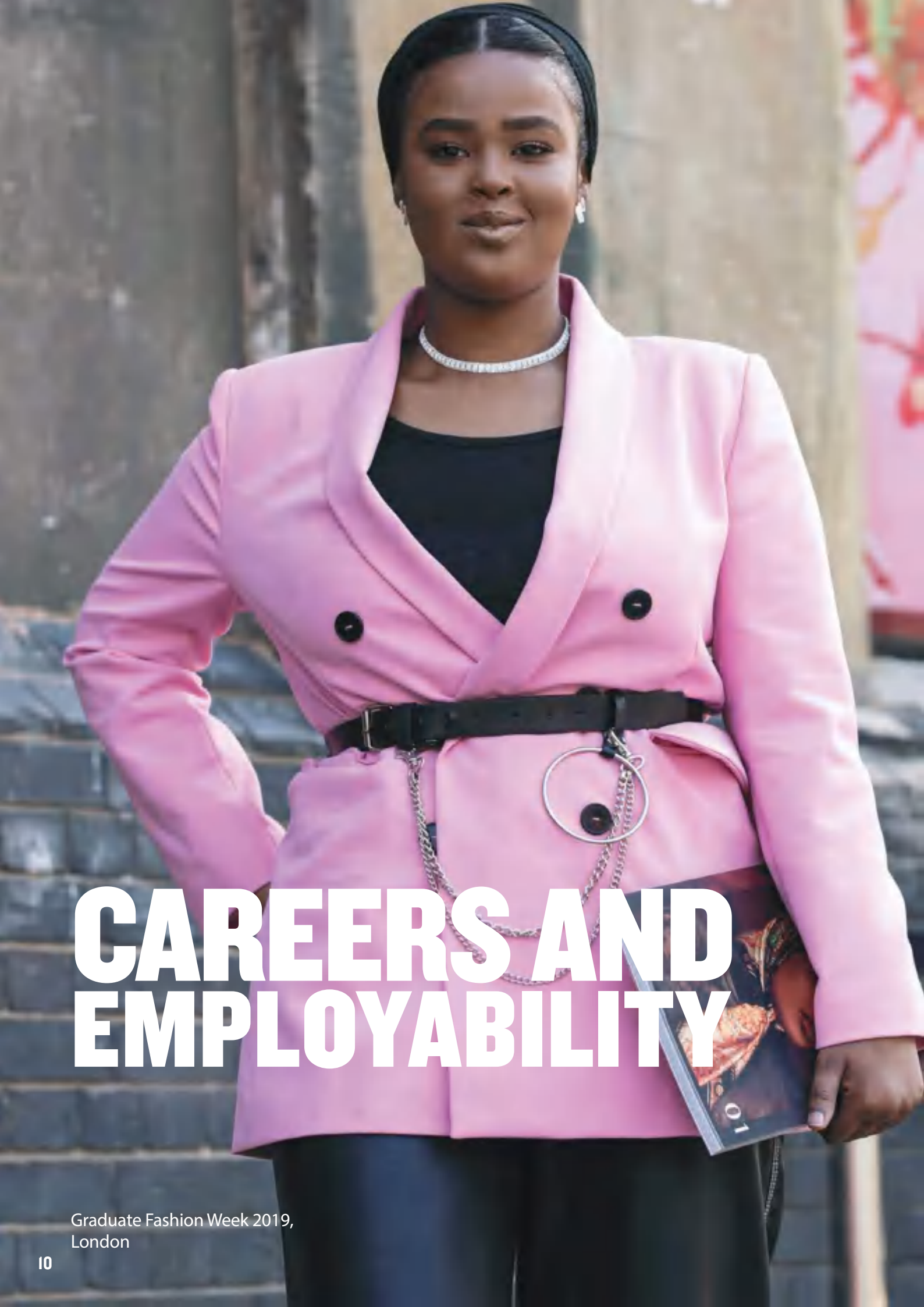


“

**I HAVE RECEIVED GREAT
SUPPORT FROM THE
UNIVERSITY AND WOULD
RECOMMEND THE UK AND
USW TO ANY STUDENT.**

Grace Mungkaje

Chevening Scholar, Papua New Guinea



CAREERS AND EMPLOYABILITY

Graduate Fashion Week 2019,
London

At USW, we want to help you achieve your ambitions. We create graduates who are prepared for a successful career. Our courses offer work-related experience, reflect employer demands and give students practical skills for the real world.



WORK EXPERIENCE

Work-related experience is an advantage in today's competitive job market. We have a team to help you find work experience in the UK and overseas. There are lots of types of work experience: it might be part of your course, a work placement, voluntary work, or working on projects. We also have business start-up support on campus.

USW EXCHANGE

The Exchange is an education scheme. Our industry clients give business students a problem to work on, and they provide advice with a report and recommendations. USW Exchange can help you gain industry experience, develop your communication skills and enhance your CV.



COURSES WITH WORK PLACEMENTS

We encourage our students to take up a work placement. Many of our courses offer work placements as part of your study. These will enhance your employability, improve your CV and allow you to build industry networks. For a list of courses, visit our website.

CAREER PLANNING

The Careers and Employability Service helps you think about your career options, and how to develop the skills and experience you need. We will help you while you are a student, and for up to three years after you graduate. We also offer practical help with finding work placements, completing job applications or practising interview techniques.

GRAD EDGE AWARD

We want our graduates to stand out, so we created the Grad Edge Award: it is an optional programme of events and activities to get you thinking about graduate careers. You will complete work experience, develop your workplace skills, and take part in a mock interview. All this will give your CV a solid foundation and help you perform well in graduate interviews.



PART-TIME WORK

Most international students studying on a student visa are able to work up to 20 hours per week during term-time and longer during vacations. We support you to find part-time work by organising a part-time jobs fair in October, where you can meet employers.

**VISIT THE
CAREERS
PAGES OF OUR
WEBSITE**





Cardiff Bay, Cardiff



DISCOVER SOUTH WALES

The University is in south Wales, UK, with campuses in and around the capital city of Wales, Cardiff.

South Wales has vibrant city life, culture, nightlife and music festivals, award-winning beaches, outdoor adventure, history and breathtaking countryside. There are excellent links to all major cities in the UK, and London is just two hours away by train.





Wales is a country in its own right, but is part of the UK. It has its own unique culture and is a welcoming place to live and study. It is safe and affordable, and our students love the friendly atmosphere at USW - you're always welcome.

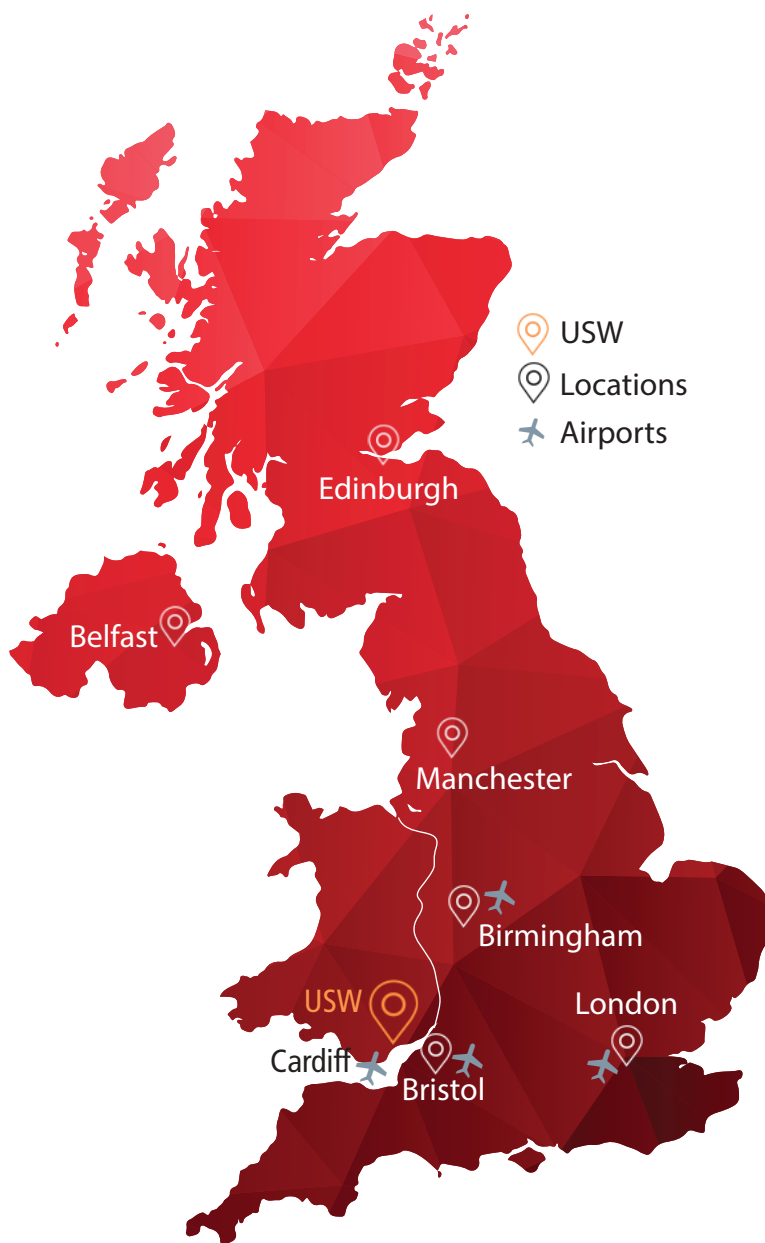


**ALL OUR CAMPUSES ARE
EASILY REACHED BY ROAD,
RAIL AND AIR, WITH
AN INTERNATIONAL
AIRPORT IN CARDIFF.**



TRAVEL TIMES TO CARDIFF

London		2 hours
Birmingham		2 hours
Bristol		50 minutes
Manchester		3 hours



Brecon Beacons



Glamorgan Heritage Coast





Cardiff Castle, Cardiff

LOVE CARDIFF

Cardiff is a modern, multicultural, safe city. It's a great place to live and study, and is home to thousands of students from around the world.

Cardiff is the fastest growing major city in the UK. Here, you'll find an amazing quality of life, more green space per person than any UK city, and fantastic people. It is a small city, but there's lots going on and it's easy to get around.

Cardiff is also one of the most affordable cities in the UK. It's a popular student city that knows how to enjoy itself. From shopping to live sport to music, arts and history, there's something for everyone. Lots of USW students choose to live in Cardiff, even if they study in Pontypridd or Newport.



THE PURPLE FLAG HAS BEEN AWARDED TO THE CITY OF CARDIFF FOR OFFERING AN ENTERTAINING, DIVERSE, SAFE AND ENJOYABLE NIGHT OUT.



WALES WITHOUT DOUBT HAS BECOME ONE OF MY FAVOURITE SPOTS IN THE UK. THE PEOPLE ARE VERY WARM AND FRIENDLY, AND CARDIFF IN PARTICULAR IS MULTICULTURAL.

Muhammed Kalash
Chevening Scholar, Libya,
MSc Global Governance

USW CARDIFF

Cardiff is a modern, multicultural capital city. Our campus for creative courses is in Cardiff city centre, putting you at the heart of the country's capital.



USW Cardiff

At USW Cardiff you can develop your creative work in a professional environment. You'll find modern specialist facilities, study spaces, a library and the Students' Union – all in one building.

Cardiff is well known as a city of culture and entertainment, so there are many opportunities for creative industries students. Our location in central Cardiff has allowed us to establish collaborations with leading venues, producers and companies. It's a great place to start your career.

SEE WHAT THE CAPITAL CITY HAS TO OFFER STUDENTS

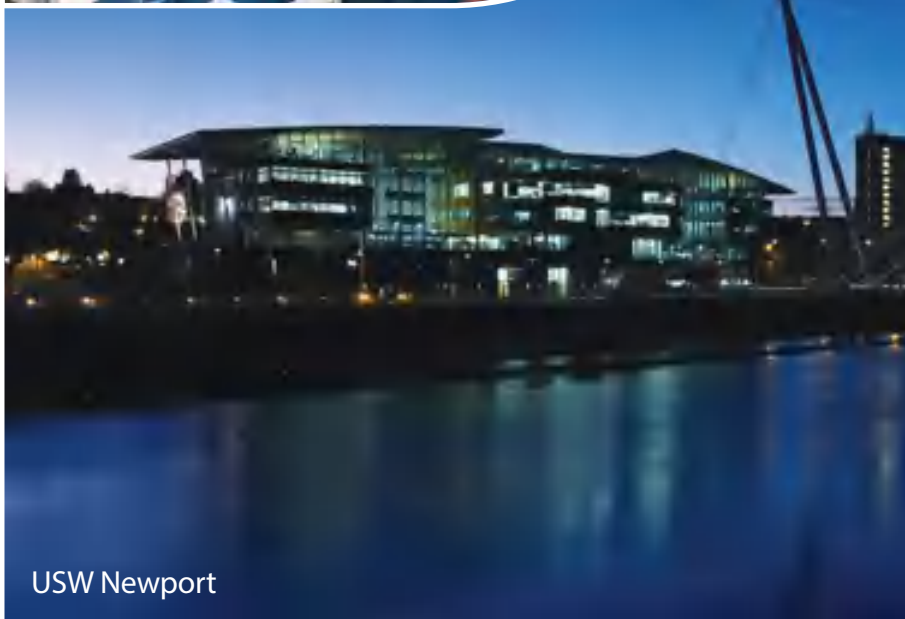


USW NEWPORT

Newport is an independent, multicultural city that's full of ideas and opportunities.

USW Newport is at the heart of the city, overlooking the River Usk. Our modern campus is on the riverfront, home to a community of learning that's dedicated to improving people's lives.

Like the rest of USW, our Newport Campus is diverse and friendly. Everything you need is in one place, like the library and Starbucks, and most other things can be found in the city around campus. Halls of Residence are just a couple of minutes' walk from campus, with different room packages to choose from.



**SEE WHAT
NEWPORT
HAS TO OFFER
STUDENTS**





Newport City Centre

USW PONTYPRIDD



USW Pontypridd, Treforest



A diverse and friendly community is at the heart of our Pontypridd Campus, just 20 minutes from Cardiff city centre.

USW Pontypridd is surrounded by green open spaces. Our students say they love the community atmosphere, and the convenience of living and studying in the same place.

Everything you need is in one place – your classes, the library, cafes and bars, and friends to spend time with. Halls of residence are on the campus, home to students from all over the UK and the world.

“

**SOUTH WALES IS DEFINITELY
SOMEWHERE YOU CAN MAKE A
HOME AWAY FROM HOME.
MY OVERALL EXPERIENCE HERE
HAS BEEN AMAZING.**

Oscar Ferreira do Carmo
Chevening Scholar, Brazil, Master of
Business Administration (MBA)



**USW PONTYPRIDD IS OUR
LARGEST CAMPUS AND HAS
TWO SITES; TREFOREST AND
GLYNTAFF. THERE IS A TRAIN
STATION NEXT TO CAMPUS
WITH REGULAR TRAINS TO
CARDIFF AND LINKS TO THE
REST OF THE UK.**



ACCOUNTING AND FINANCE

Accounting and finance teaching at USW has everything you need. We offer a solid grounding in theory that's backed up by practical experience, so you can start work with confidence.

Victoria Tomlinson, BA (Hons) Accounting and Finance graduate and FP&A Finance Analyst at GE Aviation



PROFESSIONAL RECOGNITION

USW is an ACCA Platinum Approved Learning Partner, the highest level of accreditation that a tuition provider can obtain. Our degrees offer maximum exemptions from the Association of Chartered Certified Accountants (ACCA) – the global body for professional accountants. You can also gain exemptions from other professional bodies: the Chartered Institute of Management Accountants (CIMA), the Institute of Chartered Accountants in England and Wales (ICAEW), the Chartered Institute of Public Finance and Accountancy (CIPFA).



CAREER OPPORTUNITIES

Accounting and financial professionals are in demand all over the world. There's probably no better entry point to top jobs in business, industry, management and financial consulting, than becoming a highly qualified accountant or a finance specialist.

PRACTICAL LEARNING

Learn how to use accountancy and auditing software that you'll find in the workplace when you graduate. We also have a trading room that uses Global Investor's Finance Lab software to simulate equity trading, as well as access to Thomson Reuters Eikon database that is widely used by the financial services sector. A USW student has achieved top place in the world in their final Strategic Professional Level ACCA papers for the last two years in a row.

GM FINANCIAL

Matthew Sensier,
BA (Hons) Accounting
and Finance graduate



STUDY AREAS

- Accounting and Finance
- Banking, Finance and Investment
- Finance and Investment
- Forensic Accounting
- Forensic Audit and Accounting
- Professional Accounting (with ACCA tuition)

SEE OUR FULL LIST OF COURSES



**USW IS RATED TOP 20 IN THE UK
FOR ACCOUNTING AND FINANCE.**

(Guardian League Table 2022)



BUSINESS AND MANAGEMENT

South Wales Business School offers professionally recognised degrees and outstanding industry engagement opportunities.



Jamiel Ankail,
Logistics and Supply Chain
Management student on placement

PROFESSIONAL COURSES

Making you more employable is at the heart of everything we do. All business courses at USW have been designed in consultation with industry and many are accredited by professional bodies.

CIM

Accredited Study Centre



PRACTICAL EXPERIENCE

We have partnerships with over 100 employers for employment-based teaching, including a 10-week internship for all undergraduate students. You can also improve your employability and develop skills for your career path at the South Wales Business Clinic, offering consultancy to local businesses.

CAREER OPPORTUNITIES

By the time you graduate from the South Wales Business School, you'll have the tools and confidence to contribute to the management of an organisation or start your own business.

**OUR MBA GLOBAL OFFERS
AN OPPORTUNITY FOR UP
TO EIGHT MONTHS'
POSTGRADUATE-LEVEL
WORK EXPERIENCE
IN THE UK.**



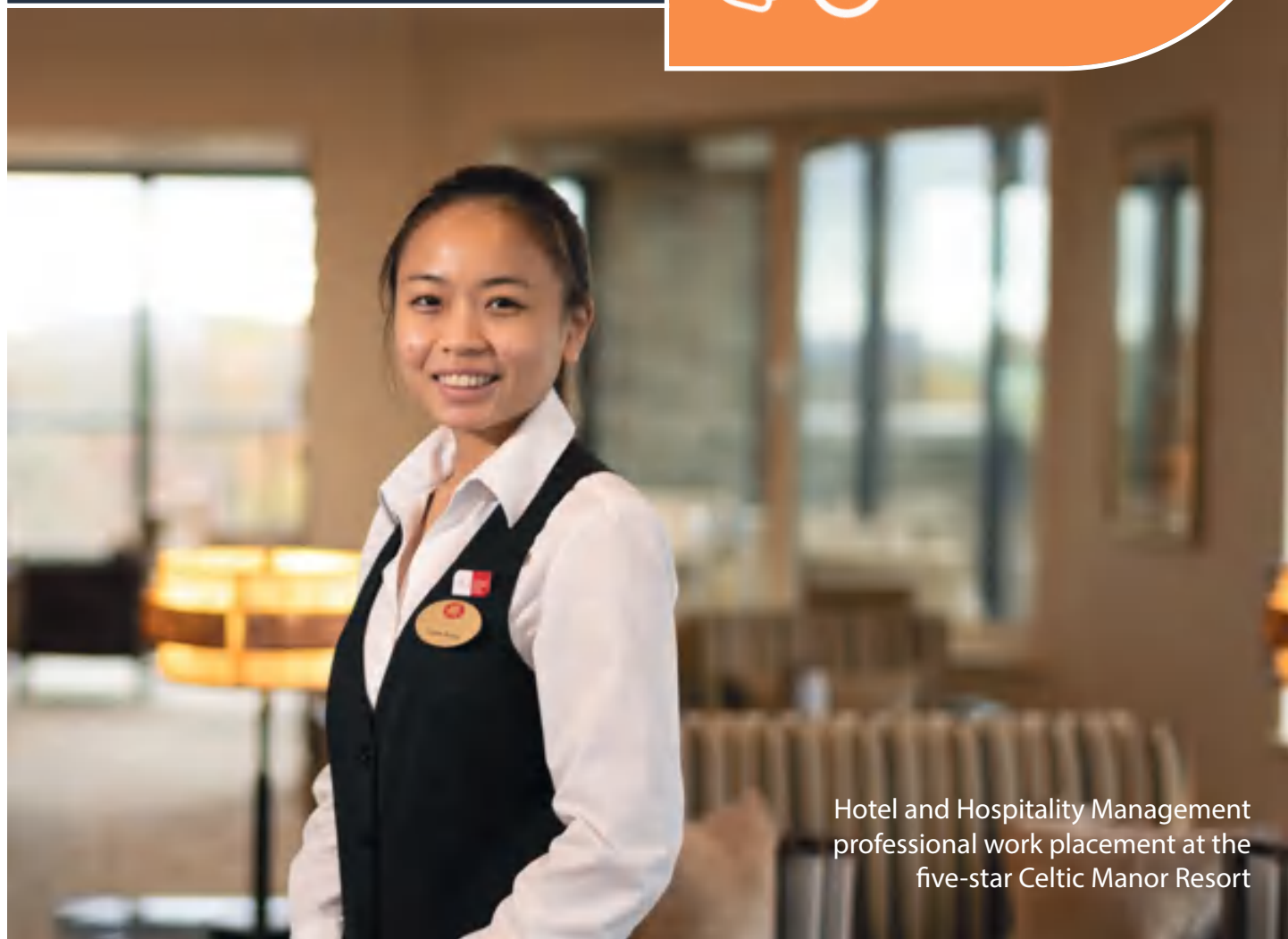
COURSES

We have a range of courses, so you can specialise in an area of industry that matches your career plans. Our flexible learning also means that on many of our undergraduate courses, you can choose where to specialise after completing your first year of study.

STUDY AREAS

- Business and Management
- Hotel and Hospitality Management
- International Business and Enterprise
- International Event Management
- International Logistics and Supply Chain Management
- MBA Global

SEE OUR FULL LIST OF COURSES



Hotel and Hospitality Management
professional work placement at the
five-star Celtic Manor Resort

CHIROPRACTIC

Chiropractors play a vital role in the prevention, diagnosis and treatment of a huge number of health conditions, as well as rehabilitation. USW offers specialist skills, education and training to prepare you for practice.



**USW IS RATED
TOP IN THE UK
FOR HEALTH
PROFESSIONS
COURSES.**

(Guardian League Table 2022)

Welsh Institute of Chiropractic,
USW Pontypridd

PROFESSIONAL RECOGNITION

This course is professionally recognised by the General Chiropractic Council (GCC) and the European Council on Chiropractic Education (ECCE). Our graduates are qualified to apply to register with the GCC, have the ability to work in European states, and are eligible to sit many entry examinations worldwide.



PROFESSIONAL EQUIPMENT

Students learn in a professional environment with access to a digital X-ray suite, diagnostic ultrasound unit, DXA scanning unit, MRI facilities and 18 patient treatment rooms. Training is also supported by the 'Anatomage' – an advanced 3D anatomy visualisation table, a first for chiropractic education in Europe.

PRACTICAL EXPERIENCE

Clinical experience is a major part of your training. The University is home to the Welsh Institute of Chiropractic – an outpatient clinic that offers diagnostic, assessment and treatment services to the public. Here, students can treat and manage real-life patients with musculoskeletal disorders, including a 13 month, professionally supervised placement.

Students also spend a week at a local hospital under the supervision of a Consultant Orthopaedic Surgeon. There are opportunities to work with University sports teams and provide care at external events such as triathlons.

**FIND OUT MORE
ABOUT MCHIRO
CHIROPRACTIC ON
OUR WEBSITE.**



Welsh Institute of Chiropractic,
USW Pontypridd

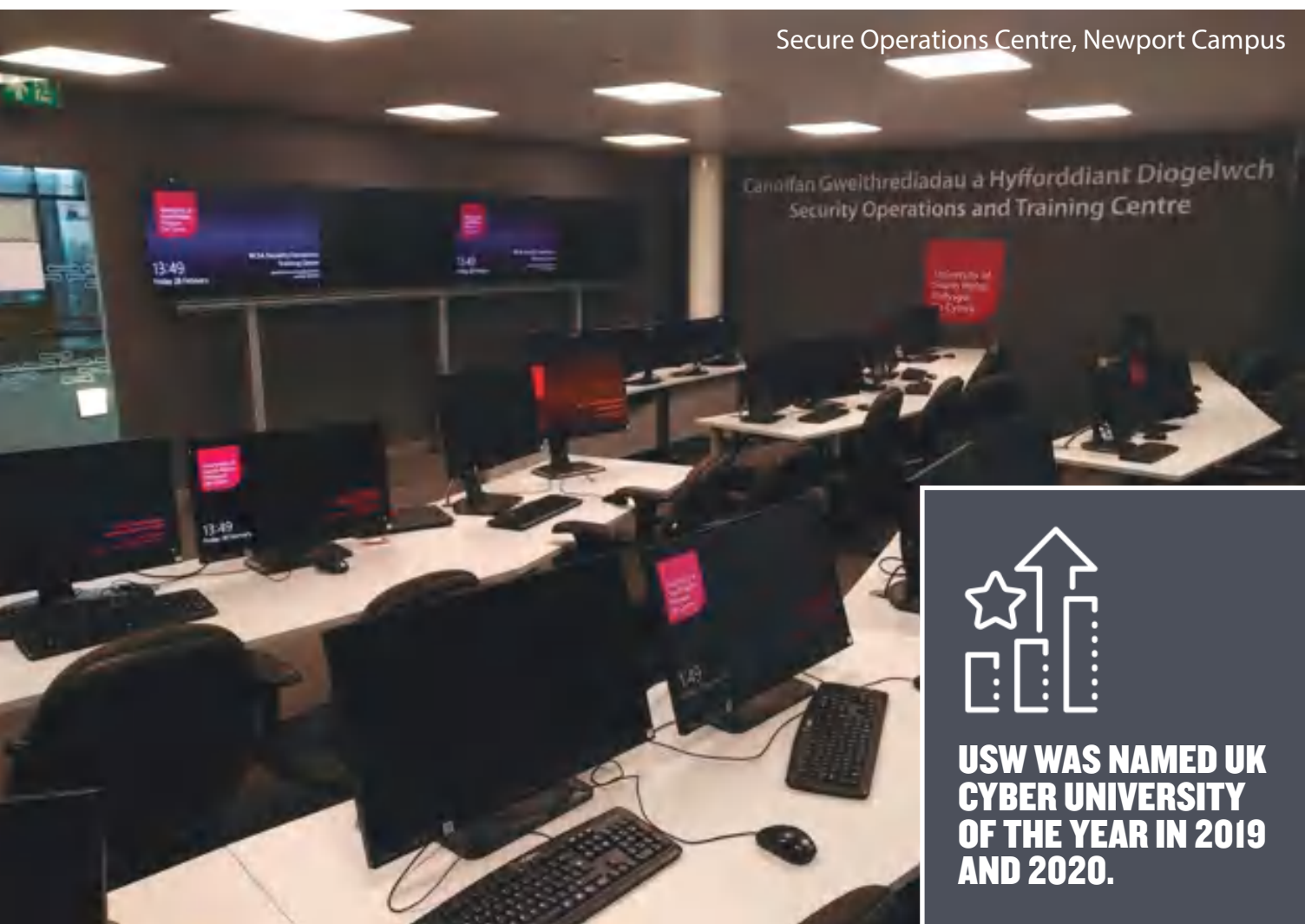


COMPUTING AND MATHS

All our courses benefit from direct industry engagement, so USW students gain the skills and support they need to excel in their chosen field, in a world that won't stop changing.

PROFESSIONAL RECOGNITION

Many of our courses are accredited by professional bodies. These accreditations demonstrate the value we place on industry endorsement, as well as the quality of our courses, teaching and facilities.



**USW IS RATED TOP
20 IN THE UK FOR
MATHEMATICS.**



(Guardian League Table 2022)



Mathematics student Lizzie Williams

ADDITIONAL TRAINING AND ACCREDITATION

To enhance your employability, most of our undergraduate computing courses have extra certification available that is specific to each specialist area. This means that you can gain industry-recognised certificates as well as your degree.

FACILITIES AND EXPERIENCE

To be career-ready, it's important you learn about your chosen profession in the right environment. As well as using industry-standard software and equipment, and learning through projects, there are opportunities for work experience as part of your course.

STUDY AREAS

- Artificial Intelligence
- Computer Science
- Cyber Security
- Data Science
- Mathematics

SEE OUR FULL LIST OF COURSES



DESIGN AND VISUAL PRODUCTION

At USW, you'll be part of a strong community of creatives who embrace change and solve problems. Our courses provide skills and experience, so you are career-ready when you graduate.

Our students and graduates work on the blockbuster BBC drama 'His Dark Materials' in Cardiff



USW IS IN THE TOP 20 EDUCATIONAL INSTITUTIONS IN THE WORLD FOR 3D ANIMATION AND GAMES DESIGN AND DEVELOPMENT, IN THE ROOKIES GLOBAL SCHOOL RANKINGS 2020.

SKILLS FOR YOUR PROFESSION

Our graduates have skills that employers look for and can demonstrate these through their showreels, portfolios and games. All students learn through a mixture of live competitions, projects and briefs, and are encouraged to undertake work experience as part of their course – anywhere in the world.

PROFESSIONAL FACILITIES

USW is home to the **Film & TV School Wales** and is a major breakthrough in creative industries education. It has been developed in consultation with the Welsh Government and the wider creative industries sector. Film & TV School Wales brings together a range of film and television courses to provide students with the best opportunities to build a successful career in 21st century film and television.

To be career-ready, it's important you learn about your chosen profession in the right environment. Our studios are designed to emulate what happens in industry, including creative collaborative spaces and our industry pitching room. For technical skills, we have green screen studios, a motion capture suite, 3D printing labs, photography studios with an infinity cove, and editing and post-production suites.

GREAT LOCATION: CARDIFF

Our campus is in the heart of Cardiff's creative industry and we see the city as our wider campus. This city centre location and our excellent links with industry provide an ideal launchpad for your career. Well known as a city of culture and entertainment, the opportunities for creative industries students in Cardiff are endless. Cardiff is also a major centre for TV and media production in the UK. With major production studios and the BBC on the doorstep, you'll have the potential to reach people from around the globe.

STUDY AREAS

- Animation and Games
- Design and Communication
- Fashion
- Film and VFX
- Photography

SEE OUR FULL LIST OF COURSES



**USW IS RATED TOP 5 IN
THE UK FOR TEACHING
IN DESIGN.**

(Guardian League Table 2022)



Cardiff Campus -
Green Screen Studio

EDUCATION AND TEACHING

The education sector offers a range of satisfying and rewarding careers. If you want to inspire and support others to learn, then training in education might be right for you.



REAL-LIFE LEARNING

We deliver Primary Initial Teacher Education in partnership with many excellent schools, to offer a diverse range of high-quality placement experiences. These partners also help inform what you learn at university, which ensures that the course accurately reflects teaching in the real world. Graduates have Qualified Teacher Status (QTS) to teach in the UK or overseas.





Professional facilities

To be career-ready, it's important you learn about your chosen profession in the right environment. We emulate school classrooms and flexible and outdoor learning spaces to support you to develop your practical skills and range of authentic learning experiences on campus.

DIGITAL SKILLS

USW is an accredited Apple Regional Training Centre, so students have expert guidance and bespoke Apple-certified training to enhance teaching and learning. We're recognised in the prestigious 2020 Edtech Top 50 list for the work of our students to develop digital skills as future teachers.



STUDY AREAS

- Education
- Early Years Education and Practice
- Leadership and Management (Education)
- Post Compulsory Education and Training
- Primary Initial Teacher Education
- SEN/ALN (Additional Learning Needs)
- SEN/ALN (Autism)

SEE OUR FULL LIST OF COURSES



**100% OF THE ASSESSMENTS
ON OUR UNDERGRADUATE
DEGREES ARE COURSEWORK-
BASED, MEANING NO EXAMS.**



ENGINEERING AND CONSTRUCTION

Engineers shape, innovate and create the world around us. We offer traditional and specialist engineering and construction courses, all giving students skills and experiences that prepare them for their career.



Wayne Kwenda, Aerospace graduate, works in Product Support Engineering at GE Aviation Wales

PROFESSIONAL RECOGNITION

Many of our courses are accredited by professional bodies. These accreditations demonstrate how our degrees meet employer standards, as well as the quality of our courses, teaching and facilities. Many of our accreditations also provide the basis for achieving Chartered Engineer status following graduation and suitable work experience.



FACILITIES AND EXPERIENCE

To be career-ready, it's important you learn about your chosen profession in the right environment. Our students learn using industry-standard equipment on campus, like in our Aerospace Centre and Materials Testing Laboratory. In addition to site visits and learning through real-life projects, there are opportunities for work experience as part of your course.

Mercedes Vaughan-Matthews,
Construction Project
Management graduate



ADDITIONAL TRAINING AND ACCREDITATION

We are the only university in the UK that has integrated the industry-standard aircraft maintenance qualification 'EASAPart-66' with an Honours degree.



Approval Number:
UK.147.0111

STUDY AREAS

- Aerospace Engineering
- Automotive Engineering
- Civil Engineering
- Construction Project Management
- Electronic Engineering
- Mechanical Engineering
- Renewable Energy and Sustainable Technology

SEE OUR FULL LIST OF COURSES



HEALTH

USW offers exceptional training, facilities and support for healthcare students. If you're caring, compassionate and have a commitment to helping people, we can help you start your career.



**WE OFFER ONLINE COURSES
FOR HEALTHCARE
PROFESSIONALS - SEE A
FULL LIST ON OUR WEBSITE.**

Sophia McKirdy
Midwifery student

PROFESSIONAL RECOGNITION

USW is an NMC Approved Education Institution (AEI). This means that graduates from our courses in Nursing and Midwifery can apply to join the NMC professional register and start to practise in the UK.



FACILITIES AND EXPERIENCE

To be career-ready, it's important you learn about your chosen profession in the right environment. We value a hands-on approach to study. You'll learn and undertake practical work in a purpose-built environment that recreates different clinical and care settings, gaining skills from using real healthcare equipment.



WORK PLACEMENTS

To prepare you for practice after you graduate, a great deal of your studies take place in a range of clinical settings – this could be in a school, a medical ward, surgical ward, or in the community. On placement, you'll be assigned a mentor and you'll be supported by healthcare workers, managers, practice facilitators, and link lecturers.

STUDY AREAS

- Allied Health Professions
- Health and Social Care Management
- Midwifery
- Nursing
- Public Health
- Professional Practice

SEE OUR FULL LIST OF COURSES



**USW IS RATED TOP IN
THE UK FOR HEALTH
PROFESSIONS.**

(Guardian League Table 2022)



LAW AND CRIMINOLOGY

The legal and criminal justice systems offer valued career paths that make a difference to society. Our degrees provide the theory and practical skills you need to work in these fields.

Hafsah Abdul Hardi,
LLB (Hons) Law student
on placement



LLB (HONS) LAW (ACCELERATED ROUTE)

Achieve an LLB (Hons) degree after just two years of full-time study.

PROFESSIONAL RECOGNITION

All our undergraduate Law degrees are recognised as Qualifying Law Degrees (QLD) and are professionally accredited by the Solicitors Regulation Authority (SRA). This means that they satisfy the academic stage of training for progression to the professional stage to become a solicitor or a barrister.



REAL-LIFE CASES

The Innocence Project gives our Criminology students a chance to work on real cases and investigations, with the potential to overturn a miscarriage of justice. We also operate a Cold Case Unit where students work with policing and missing person experts.

PRACTICAL LEARNING AND PLACEMENTS

Work experience is a key part of study at USW and we encourage all students to spend time in the workplace. Law students can also volunteer at our Legal Advice Clinic, offering pro bono legal advice to local businesses and members of the community.

STUDY AREAS

- Criminology and Criminal Justice
- Law
- Law (Accelerated Route)
- International Commercial Law

SEE OUR FULL LIST OF COURSES



Students gaining practical skills in the Moot Court, USW Pontypridd

MEDIA AND PERFORMANCE

USW is in the perfect location for you to begin your career in media and performance. Here, you'll be part of a strong creative community that thrives from opportunities on campus and in the city.

**OUR GRADUATES WORK
AT NETFLIX, DISNEY,
SKY, AND THE BBC.**

Media Production Studio, USW Cardiff

SKILLS FOR YOUR PROFESSION

Our graduates have skills that employers look for and can demonstrate these through their innovative portfolios and performances. All students learn through a mixture of live competitions, projects and briefs, and are encouraged to undertake work experience as part of their course.

PROFESSIONAL FACILITIES

To be career-ready, it's important you learn about your chosen profession in the right environment. Our studios are designed to emulate what happens in the industry, and you'll work with students from other courses for an inter-disciplinary experience that mirrors real life. For technical skills, there's a multi-camera HD TV studio and radio studios, a theatre, dance studios, rehearsal spaces, and nine music recording studios – all on campus.

GREAT LOCATION: CARDIFF

Our campus is in the heart of Cardiff's creative industry and we see the city as our wider campus. This city centre location and our excellent links with industry provide an ideal launchpad for your career. Well known as a city of culture and entertainment, the opportunities for media and performance students in Cardiff are endless. Cardiff was recently named the UK's first Music City and it's a key location for media in the UK, with major outlets in easy reach of campus, including the BBC.

STUDY AREAS

- Journalism and Media
- Music and Sound
- Theatre and Drama
- Film and VFX

SEE OUR FULL LIST OF COURSES



Music Recording Studio, USW Cardiff

PSYCHOLOGY, PSYCHOTHERAPY AND COUNSELLING

USW is recognised for excellent teaching and facilities that prepare students to become professional practitioners, ready for careers that make a difference to people's lives.

PROFESSIONAL RECOGNITION

Many of our degrees are accredited by the relevant professional body. These accreditations demonstrate that what you learn is excellent preparation for your chosen field, as well as the quality of our courses, teaching and facilities.



Psychology Suite, USW Pontypridd



PRACTICAL LEARNING AND PLACEMENTS

Our campuses have specialist resources for psychology and counselling so you can develop specialist techniques. All undergraduate degrees at USW have elements of work experience built in. Our Psychology Plus scheme, for example, offers clinical experience at our clinic on campus, specialist short courses, professional certificates and work placements.

ON-CAMPUS CLINICS

The USW Behaviour Analysis Clinic offers clinical services to the public with a focus on treating behavioural challenges associated with a wide range of disorders. The USW Therapy Centre is a counselling service for people in the local area. Both of these serve the community and offer students valuable experience.

STUDY AREAS

- Behaviour Analysis and Therapy
- Clinical Psychology
- Creative and Therapeutic Arts
- Professional Doctorate
- Psychology

SEE OUR FULL LIST OF COURSES



SOCIAL POLICY AND HUMANITIES

Our degrees are designed to make a difference to the lives of people and communities around the world. Your studies at USW will give you the skills and insight you need to help others and lead social change locally and globally.



Muhanned Kalash,
Chevening Scholar, Social Policy

PRACTICAL EXPERIENCE

Gaining skills for the workplace is a key part of our courses. We have strong partnerships with employers and external organisations to provide work experience, placements and networking opportunities. As well as learning from your lecturers, you'll engage with people who are working in the sector too.

EMPLOYABILITY

Making you more employable is at the heart of everything we do. Modules have clear outcomes that are linked to the skills employers want from graduates. You'll develop analytical skills that will prepare you for a range of careers, as well as communication and digital skills.

TOMORROW MATTERS

The USW Tomorrow Matters lecture series addresses some of the most complex and pressing challenges facing the world today. We invite inspiring, high-profile speakers to campus who have witnessed and been participants in major world events. Find out more on our Tomorrow Matters web pages.

STUDY AREAS

- English
- International Relations
- Health and Social Care Management
- History
- Policing
- Public Services
- Sociology
- Youth and Community Work

SEE OUR FULL LIST OF COURSES



Sara Daniels,
BSc (Hons) Sociology

SCIENCE

A science degree provides a career for life. At the University of South Wales, you'll gain the right skills, knowledge and practical experience to be an attractive candidate to employers.



Practical session, Forensic Evidence Search Laboratory, USW Pontypridd

PROFESSIONAL RECOGNITION

Many of our courses are accredited by professional bodies. These accreditations demonstrate that what you learn is excellent preparation for your chosen field, as well as the quality of our courses, teaching and facilities.





International Wildlife Biology students on safari

USW IS RATED TOP 15 IN THE UK FOR GEOGRAPHY AND ENVIRONMENTAL SCIENCES.

(Guardian League Table 2022)



FACILITIES AND EXPERIENCE

To be career-ready, it's important you learn about your chosen profession in the right environment. We value a hands-on approach to study. You'll learn in a purpose-built learning environment and undertake practical work in specialist laboratories on campus. As well as using industry-standard software and equipment, and learning through projects, there are opportunities for work experience as part of your course.

FIELDWORK

Many of our courses offer exciting fieldwork opportunities, bringing to life what you learn in the classroom. As well as making use of the varied habitats on our doorstep, you may travel much further afield. In recent years, locations have included Honduras, South Africa, Mexico and, more locally, the Brecon Beacons and Pembrokeshire National Parks.

STUDY AREAS

- Biological Science
- Pharmaceutical Science
- Environmental Science
- Forensic Science
- Medical Sciences
- Renewable Energy and Sustainable Technology

SEE OUR FULL LIST OF COURSES



SPORT

We have courses that reflect different aspects of the sport industry, at many different levels. From coaching and performance to science and therapy, we help students from all over the world prepare for the sporting career they want.

USW IS THE ONLY UNIVERSITY IN ENGLAND AND WALES TO OFFER A FULL-SIZE INDOOR 3G PITCH BUILT TO FIFA PRO AND WORLD RUGBY STANDARD, FOR GUARANTEED TRAINING ALL YEAR ROUND.



Indoor training pitch, USW Sport Park

PROFESSIONAL RECOGNITION

Many of our courses are accredited by professional bodies. These accreditations demonstrate that what you learn is excellent preparation for your chosen field, as well as the quality of our courses, teaching and facilities.



PROFESSIONAL FACILITIES

To be career-ready, it's important you learn about your chosen profession in the right environment. USW Sport Park is an elite training facility that attracts professional clubs and associations from all over the world. We value a hands-on approach to study and all students are provided with high-quality sportswear to ensure you are professionally equipped.

PRACTICAL EXPERIENCE

We have many partnerships with national governing bodies, professional sport teams and local businesses, which provide work experience opportunities that match your course and interests. Plus, all of our coaching courses are mapped to industry standards to offer you an industry-recognised qualification in addition to your degree.



Students training in the Strength and Conditioning room, USW Sport Park

STUDY AREAS

- Football Coaching and Performance
- Rugby Coaching and Performance
- Sport and Exercise Therapy
- Sports Coaching and Performance
- Sport, Health and Exercise Science
- Strength and Conditioning

SEE OUR FULL LIST OF COURSES



YOUR PATHWAY TO A BETTER TOMORROW

University
of South
Wales

IN PARTNERSHIP WITH



The University of South Wales is working in partnership with QA Higher Education (QAHE) to deliver an International Pathway College at our Cardiff and Pontypridd campuses.

These pathway programmes give you the foundation to begin your studies at USW. With our support, you can develop your English-language ability and academic study skills. After successfully completing the programme, pathway students can progress to degree study.

Pathway foundation programmes lead to degree study in Business and Social Science, Creative Industries, Computer Science, Engineering, or Science, so you can choose the pathway that's right for your goals.

Pathway programmes are validated by the University of South Wales and taught by QA Higher Education staff.

**FIND YOUR PATHWAY
AT USW**

qa.southwales.ac.uk



WHAT WILL YOUR PATHWAY LEAD TO?

International Foundation Programme

Once you successfully complete the International Foundation Programme you are guaranteed to progress to the first year of the degree programme you applied for at the University of South Wales.

However, for degrees that have additional requirements, a new application will be necessary after your foundation programme year. Additional entry requirements will be featured on our website where appropriate.

	START DATES	TUITION FEE 2022-23 2 TERMS	TUITION FEE 2022-23 3 TERMS
International Foundation Programme	October and January	£10,500	£13,000

International Year One Business

Once you successfully complete the International Year One Business, you will progress to the second year of the business degree programme you applied for at the University of South Wales.

	START DATES	TUITION FEE 2022-23
International Year One Business	October and January	£13,500



HOW TO FIND YOUR PATHWAY

There is a degree selector on our website to help you find the foundation pathway you need to progress to your degree of choice:

qa.southwales.ac.uk/courses

If you meet the necessary English language requirements, you'll be able to apply for a joint CAS for the whole of your foundation programme and undergraduate study at University of South Wales. This means you will only need to apply for your Student Route visa once for your entire UK study, with no additional English testing requirements.

CHECK OUT THE DEGREE SELECTOR ON OUR WEBSITE

FEEES AND SCHOLARSHIPS

We understand that studying in the UK is a big financial investment, so we make studying at USW affordable by offering:

- **COMPETITIVE TUITION FEES**
- **GENEROUS SCHOLARSHIPS**
- **CONVENIENT PAYMENT PLANS**



UNDERGRADUATE DEGREES: 2022-23	TUITION FEE	SCHOLARSHIP
Degree/Foundation Degree courses in Business or Creative Industries (per year)	£13,700	£1,500-£2,500
Degree/Foundation Degree courses in Computing, Engineering, Sciences or Education (per year)	£14,000	£1,500-£2,500
Degree placement year	£2,700	/

POSTGRADUATE DEGREES: 2022-23	TUITION FEE	SCHOLARSHIP
MBA Global/LLM Legal Practice Course	£15,500	£2,000-£2,500
MBA/MA/MSc/LLM in Business, Creative Industries or Law	£14,500	£2,000-£2,500
MA/MSc in Computing, Engineering, Sciences or Education	£14,700	£2,000-£2,500

RESEARCH: 2022-23	TUITION FEE	SCHOLARSHIP
PhD	£15,500	£2,000-£2,500
DBA	£14,500	£2,000-£2,500

SCHOLARSHIPS

You will be considered for a scholarship automatically when we receive your application to study; you don't need to make a separate scholarship application. You will receive confirmation of a scholarship with your offer letter and it applies to all years of study.

Scholarships and discounts do not apply to sponsored students, those studying a placement year or English language programmes. Scholarships may be withdrawn if conditions of the scholarships are not adhered to.

International scholarships

Partial tuition scholarships of up to £2,500 are available to self-funded international students for each year of study:

Chancellor's International Development Scholarship

Undergraduate and postgraduate students from the following regions are eligible for a scholarship of £2,500:

• Africa • Latin America • South Asia • South East Asia • Central Asia and Turkey • Caribbean • Lebanon • Norway

Commonwealth and Chevening Scholarships

USW is a popular destination for Commonwealth and Chevening scholars and we offer a number of general and partnership scholarships. For more information visit: www.southwales.ac.uk/international

TUITION FEES

- Fees are charged per academic year.
- Accommodation and living costs should be calculated separately.
- Please refer to course web pages for any additional field trip fees: www.southwales.ac.uk/courses

Payment schedule

Students studying Pre-session English Language Programmes must pay the balance of fees in full before enrolment.

International students studying undergraduate and postgraduate courses must pay a minimum 50% of fees before enrolment.

Payment options

1. An early payment discount of £300 may be available upon full payment of fees on or before enrolment. Terms and conditions apply.
2. Payment of the balance of fees in monthly instalments.

For further information about payment schedule of tuition fees, including payment by wire transfer, visit: www.southwales.ac.uk/international



NORTH AMERICAN LOANS

USA

If you are a US citizen, you may be able to take out a loan to meet the cost of your studies. The University of South Wales is a participating institution in the William D. Ford Federal Direct Loan Program. Money is loaned by the US Department of Education directly to students via their schools. The University is certified to originate Direct Loans for full-time Bachelor or graduate degrees only. The School Code for the University is: G35473

Canada

The University of South Wales is a designated institution that enables students from British Columbia and Ontario to attend and still be eligible for student financial assistance from their home province.

For more information about eligibility and how to apply, please visit British Columbia Student Aid www.studentaidbc.ca or Ontario Student Assistance Program: www.ontario.ca/page/osap-ontario-student-assistance-program

EU STUDENTS: FEES AND SCHOLARSHIPS

The University is proud of our links to Europe, and the friendly and multicultural atmosphere at USW is enhanced by our diverse student and staff community from Europe and around the world.

For EU, other EEA and Swiss nationals starting a course in September 2022, course fees will be the equivalent to our international fees and funding from the Student Loans Company will have finished.

However, the University is committed to making fees for EU students as affordable as possible. To help students affected by this change, we offer an attractive range of scholarships for EU students. Eligible EU students starting a course with USW in September 2022 will be automatically awarded a scholarship, which will bring the tuition fee amount in line with the fee paid by UK students. This will apply for the duration of your course. EU students studying undergraduate and postgraduate courses must pay a deposit of at least £3,000 before enrolment. Payment options are on page 53.

Please note the Common Travel Area (CTA) means that Ireland and the UK will take steps to ensure Irish and British citizens can continue to access further and higher education on the same fee basis in the future, and will not need to apply for a visa. For details, see: www.dfa.ie/brexit

This information is correct at the time of publication. For the latest information, please contact the Immigration and International Student Advice team service by email: international.advice@southwales.ac.uk

EUROPEAN PARTNERS

The University has a strong network of European partner institutions through which students are able to access opportunities to study abroad. Students from USW's partner universities who are interested in studying at USW should contact their university's International/Student Exchange (Outgoing) Office for advice on the process.

LIVING COSTS IN SOUTH WALES

South Wales offers great value for money. Food, entertainment, accommodation and other day-to-day costs are likely to be lower than in many other parts of the UK. However, it is vital that all students prepare their finances before they attend university.

The amount of money you need during your time studying with us will vary depending on the sort of lifestyle you lead. The UKVI requires all students applying for a visa for programmes of nine months or more to provide evidence of £9,207 plus any unpaid course fees for the first year.



**FOR THE LATEST
INFORMATION ON
FEES AND
SCHOLARSHIPS,
VISIT OUR WEBSITE.**



ENTRY REQUIREMENTS



USW Pontypridd, Treforest

We recognise academic qualifications from around the world. You can find requirements for your country on our website: www.southwales.ac.uk/international/your-country

English language

The University recognises a number of English language qualifications that include:

- IELTS with an average overall score of 6.0 with a minimum of 5.5 in each component*
- GCSE pass in English at grade C or above
- Equivalent country-specific English qualifications are also considered on an individual basis
- TOEFL with a score of 72 overall and a minimum of 18 in reading, 17 in listening, 20 in speaking and 17 in writing
- PTE Academic and PTE Academic UKVI with score of 64 overall and 59 in each component

For more information and a complete list of English qualifications we accept, visit:

www.southwales.ac.uk/international/courses/ielts-english-programmes-requirements

Please note we offer English language courses if your IELTS is below the course entry requirement. See page 61.

OVER 500 COURSES



CHOOSE FROM OVER 500 COURSES, SOME WITH GUARANTEED WORK PLACEMENTS AND MANY LEADING TO PROFESSIONAL CERTIFICATION.

*A very small number of USW's programmes require a higher IELTS (or equivalent) score. Please check individual courses for details. Courses below undergraduate level will require a UKVI SELT IELTS.

Considering your application

To consider your application, we require the following documents:

- Academic transcripts and certificates (include documents from both your high school and university or college qualifications)
- Evidence of English language ability (IELTS or equivalent)
- Academic/employment reference letter
- Personal statement

We recommend submitting all of these documents when you submit your application, but if you don't have them available, we may still be able to make you a conditional offer to study with us.

A conditional offer means you still need to meet some requirements to study with us – usually exam results. Your offer letter should state what you need to submit in order to achieve an unconditional offer. Other conditions include submitting a work reference or your transcripts, for example.

Our trusted partners around the world

We have an extensive network of trusted agents who work with students in countries around the world on our behalf. The agent in your country can help you with the application and admissions process. You will find their contact details on the relevant 'Your Country' page on our website.

VISIT 'YOUR COUNTRY' WEB PAGES



HOW TO APPLY

1 FIND OUT MORE

Visit www.southwales.ac.uk/international to find out more about our courses, location, fees and scholarships.

2 CONTACT US

If you still have any questions, contact our Admissions Team at international@southwales.ac.uk or one of our representatives in your country to discuss any questions you may have – visit Your Country pages at: www.southwales.ac.uk/international/your-country

3 APPLY

Apply for your course online, using the My USW online portal: www.southwales.ac.uk/apply

4 YOUR OFFER

We aim to respond to your application within five working days with an offer to study, but it might take longer if you need an interview. If your offer is conditional, please send us the information we require as soon as possible and we will update your offer to an unconditional offer.

5 ACCEPT YOUR PLACE

Instructions on how to accept your offer will be in the unconditional offer email, as well as how to obtain a CAS to apply for your student visa (if required).

6 APPLY FOR ACCOMMODATION

Our Accommodation Team will send you an email inviting you to apply once you hold a firm offer of a place on your course.

7 JOIN US

Join us for the International Welcome Programme!

**IF YOU STILL
HAVE ANY
QUESTIONS
ABOUT THE
ADMISSIONS PROCESS,**



please email the Admissions Team at:
**international.admissions@
southwales.ac.uk**



ENGLISH LANGUAGE COURSES

The USW Centre for International English offers English language courses for students who do not meet the English language requirements for their course. These pre-sessional courses also help students develop academic and social skills in the university environment.

“

THE TEACHING STAFF ARE LOVELY PEOPLE. THEY HELPED ME NOT ONLY WITH ENGLISH, BUT ALSO WITH OTHER ISSUES I HAD WHEN I FIRST ARRIVED AS EVERYTHING WAS SO NEW.

Ziwen Yao

10 week Pre-sessional English Language Programme
and BA (Hons) International Business (Top Up)



Newport Campus



These intensive courses will improve your English and academic skills, and help you communicate in an English-speaking environment.

- Courses are taught by fully qualified and professional English language teachers.
- The programme you are offered will depend on your English level and academic qualifications.
- We even support students after their English course has finished. You may also be able to attend weekly English language modules free of charge, to support you throughout your studies.
- Courses are taught at our Pontypridd Campus.
- We strongly recommend you allow at least 10 weeks (300 hours of English) to improve your English level by up to one (1.0) IELTS band (or equivalent).

Entry requirements

- Applicants must hold an offer for a course at USW (undergraduate or postgraduate levels).
- Applicants must satisfy the English language requirements as detailed in the table below.
- International applicants must hold a UK Visas and Immigration (UKVI) IELTS, taken at an approved UKVI SELT IELTS centre.

FOR INFORMATION ON UKVI SELT IELTS CENTRES ACROSS THE WORLD, VISIT WWW.GOV.UK OR CONTACT YOUR COUNTRY REPRESENTATIVE FOR FURTHER INFORMATION.



CURRENT ENGLISH LANGUAGE LEVEL	RECOMMENDED PRE-SESSIONAL ENGLISH LANGUAGE PROGRAMME	DATE (START-END)	TUITION FEE 2022-23
IELTS 3.5* or equivalent (with a minimum of 3.5 in all components)	25 weeks	May-December	£9,500
IELTS 4.0* or equivalent (with a minimum of 4.0 in all components)	20 weeks	June-December	£7,600
IELTS 4.5* or equivalent (with a minimum of 4.0 in all components)	15 weeks	May-September OR August-December	£5,700
IELTS 5.0* or equivalent (with a minimum of 4.5 in writing and 4.0 in all other components)	10 weeks	June-September OR September-December	£3,800
IELTS 5.5* or equivalent (with a minimum of 5.5 in writing and 5.0 in all other components)	5 weeks	January-February OR August-September OR November-December	£1,900

*Students applying for a course requiring a higher IELTS score than 6.0 may require a longer pre-sessional English course. Please note that the fees stated above are subject to change. For full terms and conditions, visit our website: www.southwales.ac.uk/money

STUDENT SUPPORT



For wellbeing, information and advice, whatever the issue, there's a network of people at USW ready to help you.

International and EU student support

We offer excellent support and advice at every stage of your journey – from making your application to graduation and beyond. Our Immigration and International Student Advice team can give you information about non-academic issues such as immigration and daily life in the UK, plus they arrange lots of events and social activities. To find out more, visit: www.southwales.ac.uk/intsupport



Disability Services provide information and advice, and co-ordinate disability-related support. Whether you have a physical, sensory or unseen disability, or a specific learning difficulty, we will draw up a support plan to ensure you receive the learning support you need.

Religion: The Chaplaincy offers an open and affirming service to all USW students. We offer confidential guidance and support to students whether they are religious or not.

Wellbeing Service offers free advice, counselling and support. We are concerned with your overall wellbeing, including physical and mental health, social welfare, and ways to improve these.

Campus Life Co-ordinators look after students living in Halls and are a useful contact for any Halls-related issues.

Student mentoring aims to make your start to university life easy and enjoyable, with practical advice and support.

Student Money Advice can help you manage your money and offer advice on student funding.

USW Careers can help with all things related to your career and advise you how to get the most from your studies – turn to page 11 for more.



STUDYING AT THE UNIVERSITY OF SOUTH WALES HAS ALLOWED ME TO MAKE FRIENDS FROM DIFFERENT COUNTRIES, CULTURES AND BACKGROUNDS, I FEEL I HAVE DEVELOPED INTO A WELL-ROUNDED INDIVIDUAL.

Filipe Galamba
Portugal, MA Journalism



VISA AND IMMIGRATION PROCEDURES

Visas to study in the UK

- It is important you read the University's guide to visas and application processes:
www.southwales.ac.uk/international/visas-and-pre-arrival
- You can apply for a Student Visa six months before the start of your course and you will need a Confirmation of Acceptance to Study (CAS) from USW. We can issue this statement up to six months before your course start date.
- Once you have accepted an offer to study at USW, our Immigration and International Student Advice team (IISA) will guide you through applying for a visa under the Student Route, or any appropriate alternative immigration category.
- The visa application can be broken down into four stages:
 - ✓ Gather the documents needed for your application, and wait for your finances to mature.
 - ✓ Complete the Student Route online form and pay all application fees due.
 - ✓ Book and attend an appointment at a Visa Application Centre OR use the UKVI ID App to complete the biometrics process.
 - ✓ Post your documents to the Embassy.
- A standard visa application usually takes three weeks to process, though this can be longer at peak times (September/October). Some countries offer a Priority Visa Application Service that takes three to five days. You can check the current visa processing time for your country at: **www.gov.uk**

Immigration Health Surcharge (IHS)

International students in the UK must pay a health surcharge if their visa is for six months or longer. For information, visit our website:

www.southwales.ac.uk/international/visas-and-pre-arrival/visas

Bringing your family

If you want to bring family members to the UK with you as your dependents, visit the 'Bringing your family' section on our website for information and guidance.

Graduate Immigration Route

Find out more about the new Graduate Immigration Route, which allows eligible international students to stay in the UK to work full-time for two years after graduation if you have completed a Bachelors or Masters degree, and for three years if you have completed a PhD.

**FOR DETAILED
INFORMATION
ABOUT VISAS,
PLEASE VISIT OUR
WEBSITE.**





**THE IMMIGRATION AND
INTERNATIONAL STUDENT
ADVICE TEAM (IISA)
CAN ANSWER YOUR
QUESTIONS ABOUT
IMMIGRATION AT
ANY TIME.**



You can chat with an adviser
through our website or e-mail:
**[international.advice@
southwales.ac.uk](mailto:international.advice@southwales.ac.uk)**



ARRIVING AT USW



HOW DO I SIGN UP?

Being part of the IWP is easy. Visit
www.southwales.ac.uk/international
for more information and an online booking form.



INTERNATIONAL WELCOME PROGRAMME (IWP)

IWP is primarily a social programme for international and EU students each September and February. These events will help you make friends and get used to being in the UK before your academic induction and enrolment. It is likely that a blended approach will be taken for the IWP in the 2022-23 academic year.

- There are lots of trips and activities, and you can choose activities and information sessions that interest you, like Living and Learning in the UK, Keeping Safe Under the Student Immigration Route, and Driving in the UK.
- Social activities can include trips, cooking, picnics, quizzes, city walks or guest lectures from local historians. You could even learn new skills such as world dance, Zumba or drumming! Whether you like to party or you prefer something a little quieter, there will be something for everyone.
- Registration and most of the activities are free, though there is a small charge for some of the optional coach trips and meals.
- As well as all the fun activities, staff and students will show you around campus, make sure you have somewhere to live, and help you with opening a bank account.
- The IWP is also an opportunity to meet other new students, as well as students who have been here a while and can share their experiences. It will help you prepare for the start of term and feel at home here.



ARRIVAL SERVICES

To make your travel to USW as easy as possible, we organise arrival services for when you first arrive in the UK.

These services are available throughout the year from Cardiff International Airport (CWL) and Heathrow Airport (LHR), London.



We recommend you arrange your flight to land at Cardiff International Airport (CWL). On request, we can arrange a free taxi service from the airport to your accommodation at USW.

If you arrive at London Heathrow (LHR), we can arrange for a University representative to meet you and help you with the rest of your journey to USW. Please note, this is not a pick-up service and our representative will neither transport you nor travel with you to the University.

It is important to remember that you must request the arrival services at least five working days before you travel. For more information and a booking form, visit: www.southwales.ac.uk/arrivalservices





INFORMATION FOR PARENTS

University is a life-changing experience for parents as well as students. But rest assured, we do our utmost to provide a safe and supportive environment in which your child can thrive.

WHY GO TO UNIVERSITY?

From improved career prospects to self-confidence and independence, there are many reasons to go to university:

- Gain a qualification that's internationally recognised. UK higher education qualifications are recognised and respected by employers worldwide.
- Develop the essential skills needed for a career and working life: communication, organisation, time management, team work, leadership and problem solving.
- We prepare our students to start their career through the curriculum – employability is built in.
- Teaching at USW is informed by employers and what happens in the workplace.
- Increased earning potential. Having a UK degree makes you more attractive to employers, you'll have a greater choice of jobs and you'll earn more. 95% of USW graduates were in work or further study within six months of leaving university (DLHE 2016/17).

WHY CHOOSE USW?

South Wales and USW are wonderful places to live and study. We'll support your child's academic progress, ensure their safety and prepare them for their future career.

South Wales is full of life and things to do, and yet it is safe. The capital city, Cardiff, is not too big and you can walk everywhere, there are masses of green spaces, and it is on the coast.



Also, Cardiff has been awarded the Purple Flag for offering an entertaining, diverse, safe and enjoyable night out.

FOR ADVICE AND WELLBEING, WE HAVE SPECIALIST TEAMS READY TO HELP YOUR CHILD:

- Immigration and International Student Advice
- Student Money Advice
- USW Careers
- Student Mentoring
- Study Skills Service
- The Chaplaincy
- Disability Services
- Students' Union
- Campus Security



Practical session, USW Pontypridd





Mountain Halls, USW Pontypridd

ACCOMMODATION



**I LIVE IN HALLS ON CAMPUS.
IT IS CONVENIENT AS IT'S
VERY CLOSE TO MY CLASSES,
LIBRARY, STUDENTS' UNION,
AND SPORT CENTRE.**

Sharif Khoshnaw

MSc Renewable Energy and
Resource Management



Mountain Halls,
USW Pontypridd



Halls of Residence, Newport

We want you to feel at home while you are studying at USW, so we have a range of good quality accommodation.

PONTYPRIDD HALLS

USW has Halls on campus at Pontypridd, so you can live and study in a friendly, community atmosphere that our students love. There are nearly 1,200 rooms of different sizes, and 20 self-contained studio flats.

- From £110 per week*
- Own room with en suite shower and toilet
- Shared kitchen, dining and living area with TV
- Mini fridge
- Self catering
- Internet access and bills included
- Insurance for personal belongings
- Smart phone app/card operated laundry
- Staffed 24 hours a day

CARDIFF HALLS

We work with Unite to offer rooms in their Halls of Residence. These rooms are right in the city centre – one building is directly opposite USW Cardiff.

- From £125 per week*
- Own room with en suite shower and toilet
- Shared kitchen, dining and living area
- Self catering
- Internet access and bills included
- Study and social space, with free printing
- USW welfare support on site
- On site laundry facilities
- Staffed 24 hours a day

NEWPORT HALLS

We work with private provider, CLV, to offer modern Halls of Residence close to campus. There are six room packages to choose from, as well as studio flats.

- From £97 per week*
- Own room with en suite shower room and toilet
- Shared kitchen
- Self catering
- Common room with Sky TV, including Sky Sports
- Internet access and bills included
- Insurance for personal belongings
- On site laundry facilities
- Staffed 24 hours a day

PRIVATELY RENTED ACCOMMODATION

If you don't want to live in Halls, private accommodation could be an option. We keep a database of registered landlords whose properties meet standard and safety regulations:

www.southwales.ac.uk/accommodation

HOW WILL I PAY?

International students must pay Halls rental in full at the beginning of the academic year. EU students must pay Halls rental for Newport and Cardiff campuses in full at the beginning of the year, unless they have a UK guarantor. Students staying in a privately rented house should refer to their contract for payment details.

WE HAVE LOTS OF ACCOMMODATION OPTIONS, SO YOU CAN CHOOSE WHAT SUITS YOU BEST. OUR ACCOMMODATION TEAM WILL SEND YOU AN EMAIL INVITING YOU TO APPLY ONCE YOU HOLD A FIRM OFFER OF A PLACE ON YOUR COURSE.

TAKE A TOUR OF OUR ACCOMMODATION ONLINE:
www.southwales.ac.uk/accommodation



* Based on 2021 prices. Please check our website for the latest information.

Want to know more about living in South Wales or what it's like to study at USW? Message one of our friendly student ambassadors – they're here to help: www.southwales.ac.uk/chat-to-our-students



STUDENT LIFE

You are expected to study, but your time at university should also be fun. Whatever your interests, there is a huge range of clubs, societies and a diverse social life at USW.



Students' Union Building, USW Pontypridd

STUDENTS' UNION

The Union is where you can play sport, make new friends from all over the world, get advice, find work and have your voice heard. You automatically get membership of the Students' Union when you enroll.



Undeb Myfyrwyr
Prifysgol De Cymru
University of South Wales
Students' Union

CLUBS AND SOCIETIES

If you join a club or society, you will meet lots of new people and get involved in all sorts of activities, from demonstrations and day trips, to nights out and parties.

SOCIAL LIFE

There is lots of entertainment at the Union. It's a friendly place, where you can watch live sport on the big screen, enjoy a meal, grab a coffee, or just take a break and relax. In the evenings, you can enjoy live bands, pub quizzes, film screenings, theme nights and more.



USW Bloggers, Class of 2019

MEET OUR STUDENTS



USW Bloggers share what student life is like through their vlogs. Follow them to hear about USW life in their own words. If you've got a question about being a student here, just get in touch with them through Instagram.

Students' Union
Officers, 2019-20



SPORT AT USW

USW Sport has some of the best facilities in the UK, offering clubs, courses and qualifications.



USW Sport is for everyone. Trying a new sport or joining a club is a great way to make friends – from indoor climbing to yoga, archery and everything in between, there's sure to be something you'll enjoy.

GET ACTIVE, STAY HEALTHY

The Sport Centre at USW Pontypridd has everything you'll need. All students can use the Sport Centre at Pontypridd, but we've arranged discounted rates with gyms and health clubs in Cardiff and Newport for students who live or study in the city.

USW has a strong competitive sport environment and it's a major part of student life. We have over 60 teams playing in the British Universities and Colleges (BUCS) leagues. Over the last few years, we've had outstanding success in football, rugby, basketball, water polo, swimming, volleyball and badminton.



USW SPORT PARK

This is one of the best university sport coaching and training venues in the country.



Our full-sized indoor football pitch is the only one at a university in England and Wales and is built to FIFA Pro and World Rugby 22 standard.

We have 11 other pitches, including four floodlit pitches, an artificial training pitch and a 3G rubber crumb floodlit football pitch.



Our sports hall includes a national standard six badminton court with sprung floor.

Specialist centre for strength and conditioning with 12 lifting platforms, providing a high-performance environment for aspiring athletes.



USEFUL INFORMATION

ABOUT THIS GUIDE

This guide provides general guidance and does not form part of any contract. The information given has been produced well in advance of delivery of the courses outlined for students due to enter the University in 2022-23 academic year. While it is believed to be correct at the time of production, our website should be checked for the latest position. The University reserves the right to amend or discontinue courses, or alter facilities, as a response to circumstances beyond its control or where it considers it reasonably necessary to do so. The University will endeavour to respond to change by consulting with those affected and/or taking remedial actions to help them. For the latest information visit: www.southwales.ac.uk/money

QUALITY ASSURANCE

The QAA diamond logo and 'QAA' are registered trademarks of the Quality Assurance Agency for Higher Education and demonstrate that the University has undergone independent review of the standard of higher education provision, and achieved a successful result.



DESIGN

Produced by the Marketing & Student Recruitment Department. Many thanks to all those who helped with this project.

Design: USW Print and Design
www.uswprintanddesign.co.uk

COVID-19 IMPACT

The wellbeing, health and safety of our students and staff is paramount to us. We are committed to delivering our courses, research opportunities and other services as safely as possible. This guide contains information about the courses and facilities that USW intends to offer in 2022-23 and adheres to the University Quality Assurance processes and government guidelines as they currently stand for study in 2022-23.

Due to the ongoing nature of the Covid-19 pandemic the information in this guide may be subject to change in order to comply with any government guidelines that apply at the date of study. At the date of publication, some of the courses and facilities set out in this guide are operating in an amended way due to the Covid-19 pandemic. Up to date details about how our courses and facilities are currently affected can be found at www.southwales.ac.uk. There are links to more information on blended learning and how facilities are impacted by the pandemic and government guidelines throughout this guide. We aim to keep you updated on changes, and will reissue the guide should we consider this to be reasonably necessary.

CHARITY STATUS

The University of South Wales is a registered charity. Registration No. 1140312.

UNIVERSITY OF SOUTH WALES GROUP



The University of South Wales Group comprises the University of South Wales, The College Merthyr Tydfil, and the Royal Welsh College of Music & Drama.



ACCESSIBILITY

The University of South Wales is committed to developing websites and publications that are fully inclusive. We make every effort to ensure all pages on the website and in publications comply with accessibility guidelines. Due to the size and complexity of the University's web presence this is an ongoing process.

To make our publications as accessible as possible, we offer two ways of accessing, viewing and reading them. You can either read them through the ISSUU platform or view online and download a PDF. The PDF file has been developed to be accessible. We then use this exact file and upload it to ISSUU to retain as many of the accessibility features as possible through the platform.

To read what accessibility features have been implemented within the PDF, please visit our website. If you have any questions or feedback regarding the accessibility of this website or our publications, or if you experience any difficulty, please contact us.

For help with accessibility, please e-mail:
accessibility@southwales.ac.uk For help with disabilities or additional needs, please e-mail:
disabilityadviser@southwales.ac.uk

WHAT NEXT?

There are lots of ways to connect with us and find out more about USW.


1 Find out more about USW:
www.southwales.ac.uk/international



2  Visit the 'Your Country' pages on our website.

3 Check the latest fees and scholarships information.



4  Contact us or our representatives in your country to answer any questions you may have.

5 Search: USW International



新浪微博
weibo.com



Issue 01: Information in this brochure is correct at the time of publication, September 2021, but may be subject to change. For the most up-to-date information, call or check our website: www.southwales.ac.uk

The University of South Wales is a registered charity. Registration No. 1140312.