



LONDON  
METROPOLITAN  
UNIVERSITY

IN PARTNERSHIP WITH

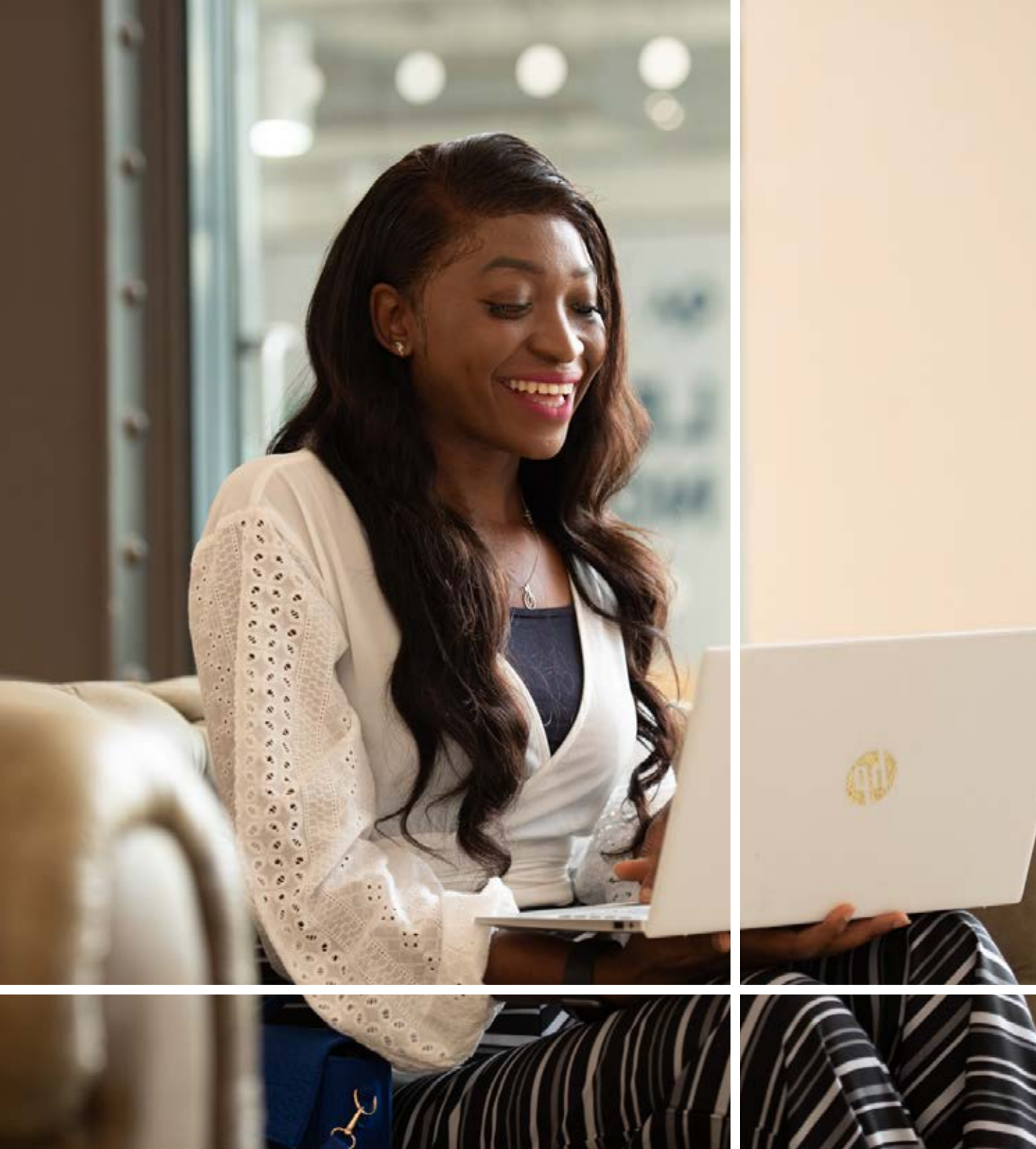


# Undergraduate Prospectus

# 24

# 25

[qahighereducation.com/londonmet](http://qahighereducation.com/londonmet)



# Contents

<u>Welcome</u>	<u>4</u>
<u>Locations</u>	<u>7</u>
<u>Our courses</u>	<u>8</u>
<u>Student support</u>	<u>18</u>
<u>Blended learning</u>	<u>23</u>
<u>Fees and funding</u>	<u>24</u>
<u>How to apply</u>	<u>26</u>

Scan here to view our digital prospectus:



# Welcome

We're here to help you gain all the skills and experience you need to kick-start your career after graduating.

We offer a selection of foundation year and undergraduate degrees, with modern teaching facilities and subject specialist academic staff. Our centres located in the heart of three popular UK cities and blended learning approach allow you to study where and how you want.

## Why study with us



Flexible study options with either daytime or evening and weekend learning.



Multiple intakes throughout the year



Foundation year study option available

# Our students

We pride ourselves on our diverse and vibrant community. Our students possess a thirst for knowledge and a determination to excel in their chosen studies, and we're here to make sure they achieve their goals. With a commitment to excellence, our students are empowered to become leaders in their respective field, equipped with the necessary skills and with the confidence to make a meaningful impact in the world.

"The 3 words I would use to describe my experience with QA so far would be, happy, intensive, and challenging. I would also add one more, rewarding."

**Beata, Business Management**



"This course has helped me break down many barriers. At first, I was a little bit frightened to speak to new people, but since studying with QA I do not have that barrier anymore and that makes me feel so comfortable for the future. It has brought me new friends and future colleagues."

**Petru Balan, Business Management**



# Locations

## London

Based in the vibrant West End, our London centre is at the heart of London's iconic attractions. Our friendly multi-university centre offers a contemporary space for reflective study and a peaceful library.

### The campus includes:

- PCs, printing services and a modern library
- Social and refreshment spaces
- Dedicated careers and employability areas
- Academic Community of Excellence (ACE) support area



## Birmingham

The Birmingham centre is located minutes away from the refurbished New Street station. The campus offers spacious classrooms with interactive learning facilities, as well as relaxed breakout areas, with easy access to the renowned Bullring.

### The campus includes:

- Spacious classrooms with interactive learning facilities
- Extensive resources in a welcoming library
- Academic Community of Excellence (ACE)
- Careers Team support
- On-site café and catering facilities



## Manchester

Manchester is thriving with culture, creativity and a large business community. It offers great opportunities for career development. Our centre is a modern learning environment with plenty of space to study and relax.

### The campus includes:

- Spacious classrooms
- Interactive learning facilities
- On-site self-catering facilities and nearby cafés





# Our courses

# Business Management

## Business Management BA (Hons) (including foundation year)

### About this course

Effective business management requires both theory and practice, and this course provides you with an opportunity to develop your understanding across both areas. You will explore business theory and its application in real-world situations, while also developing the practical skills required in a business context. The course provides you with the skills and attributes that will enable you to compete and succeed in a wide range of fields that require management.

You will develop an understanding of the purposes, structures, governance, operations and management of business processes. You will also gain an insight into corporate behaviours and cultures which exist within and between different organisations.

### What you'll study

During your foundation year, you will engage with business challenges in a stimulating environment, while boosting your confidence and acquiring crucial academic skills. This acts as excellent preparation for your subsequent three years of study, which will allow you to specialise in more specific and advanced areas of business.

During the programme, modules will cover accounting, marketing, project management, strategy and leadership, you will also develop a business plan and complete a research project (dissertation). In addition, you will undertake personal and academic skills development. The overall aim of the course is to deliver a contemporary and dynamic programme of study. You will be provided with the knowledge and skills inherent in the subject to prepare you for a career in business management. You will also increase your understanding of organisations, their management, the economy and the business environment.

Find out more:  
[qahighereducation.com/  
londonmetbm](http://qahighereducation.com/londonmetbm)

	Business Management BA (Hons)	Business Management BA (Hons) (including foundation year)
Level	Undergraduate degree	
Duration	Three years	Four years
Location	London, Birmingham or Manchester	
Intakes	November, April, August	
UK/Home Tuition fee	£9,250 (per annum)	
Mode of study	Full-time blended learning: daytime or evening and weekend	
Teaching hours	You will have lectures, workshops and tutorials totalling nine to 12 hours per week. You are also expected to complete independent study totalling 28 to 31 hours per week.	
Assessment methods	Coursework and exams	
Entry requirements	<b>96 UCAS points:</b> Minimum of grades CCC in three A Levels, or equivalent Level 3 qualification. GCSE Maths at grade C/4 or equivalent. Alternatively, applicants can sit the QA Higher Education Maths test and achieve a minimum score of 8.	<b>32 UCAS points:</b> At least one A Level (or from equivalent Level 3 qualification, such as BTEC/ Subsidiary/National/BTEC Extended Diploma).
English language requirements	GCSE English Language at grade C/4 or above (or equivalent). Alternatively, applicants can sit the QA Higher Education English test.	

# Business Management

## Example modules

### Foundation year

- Development for Success in Business (30 credits)
- Orientation for Success in Higher Education (30 credits)
- The Context of Business (30 credits)
- Using and Managing Data and Information (30 credits)

### Year 1

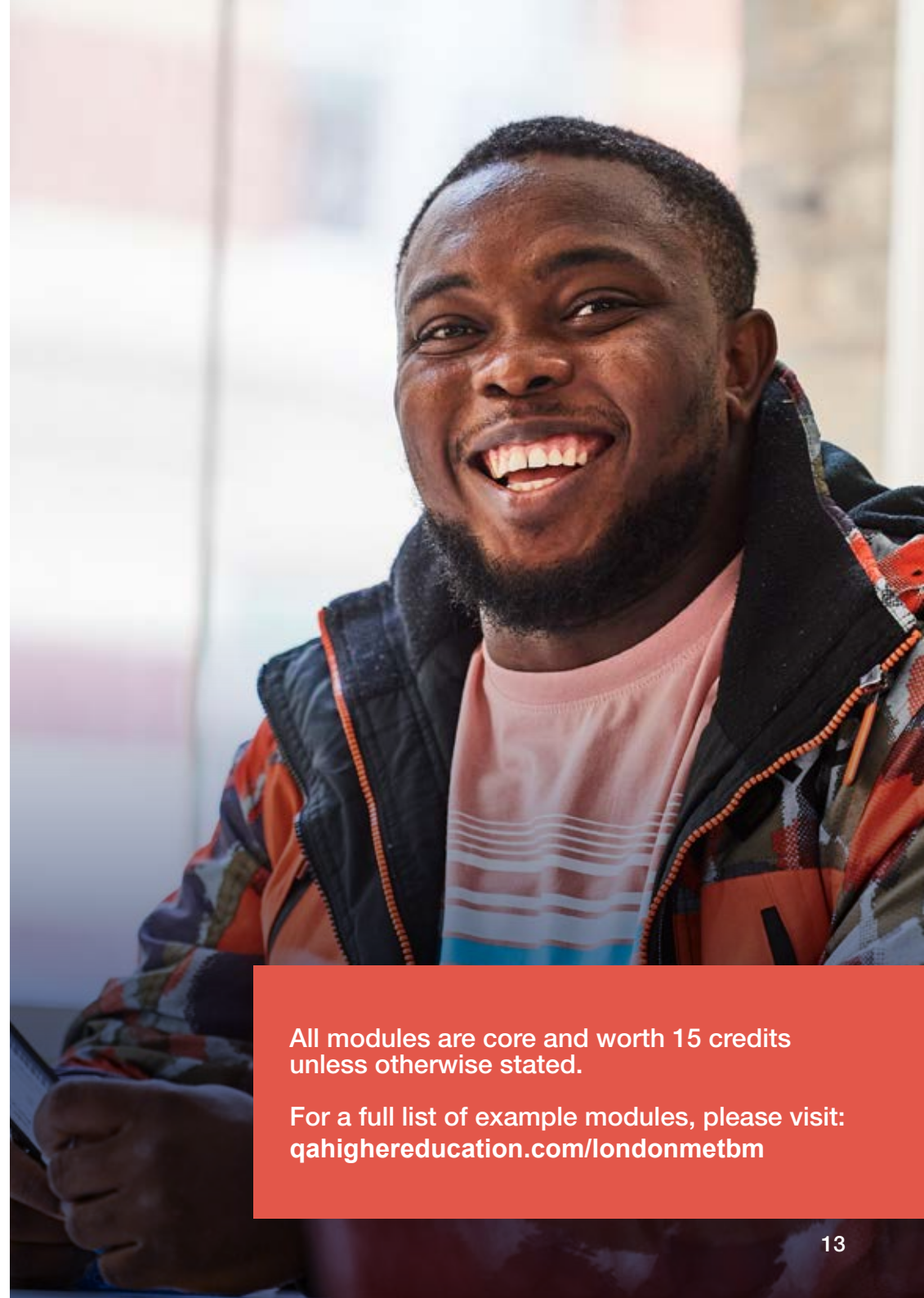
- Understanding and Managing Data
- Financial Accounting
- Managing People in Organisations
- Principles of Marketing
- Digital Business Management and Emerging Technologies
- Understanding the Business and Economic Environment

### Year 2

- Problem Solving: Methods and Analysis
- Leadership in Practice
- International Selling and Negotiation
- Organisation Design and Management
- Creating a Winning Business
- The Practice of Consultancy

### Year 3

- Dissertation (30 credits)
- Practising Business Strategy (with simulation)
- Organising and Managing Across Cultures
- Marketing Communications in Practice
- The Practice of Management



All modules are core and worth 15 credits unless otherwise stated.

For a full list of example modules, please visit: [qahighereducation.com/londonmetbm](http://qahighereducation.com/londonmetbm)

# Health and Social Care

## Health and Social Care BSc (Hons) (including foundation year)

### About this course

This programme is designed to help you develop the skills, knowledge and confidence to start a professional career in the health and social care sector over three years. The programme is aligned to the standards specified by Skills for Health (the Sector Skills Council for the NHS) and upon completion of the course, you'll be able to demonstrate to prospective employers that your advanced skills conform to the National Occupational Standards (NOS).

This course has a built-in foundation year (Year 0) that provides you with an alternative route into higher education if you need extra support to meet the entry requirements for an undergraduate degree.

**This course is fully accredited by the Chartered Institute of Housing (CIH), so if you choose to specialise in housing you'll receive free student membership of the CIH.**

### What you'll study

Each year of the course identifies a particular stage of student development. Beginning in year one as The Inquiring Student, the second year casts students as Emerging Practitioners before students become Effective Graduates by the end of the course.

Start thinking critically, explore introductory ideas around the themes of self and society amongst other modules to get you right on track for your further studies.

The activities you will take part in will teach you crucial values needed to work effectively in models of self delivery, and will help you understand the importance of self-management.

Find out more:

**[qahighereducation.com/](http://qahighereducation.com/)  
[hslondonmet](http://hslondonmet)**

	Health and Social Care BSc (Hons)	Health and Social Care BSc (Hons) (including foundation year)
Level	Undergraduate degree	
Duration	Three years	Four years
Location	London, Birmingham or Manchester	
Intakes	November, April, August	
UK/Home Tuition fee	£9,250 (per annum)	
Mode of study	Full-time blended learning: daytime or evening and weekend	
Teaching hours	You will have lectures, workshops and tutorials totalling nine to 12 hours per week. You are also expected to complete independent study totalling 28 to 31 hours per week.	
Assessment methods	Coursework including essays, presentations and podcasts	
Entry requirements	<b>112 UCAS points:</b> A minimum of grades BBC in three A levels (or from an equivalent Level 3 qualification, such as BTEC National or Advanced Diploma)	<b>32 UCAS points:</b> At least one A Level (or from equivalent Level 3 qualification, such as BTEC/ Subsidiary/National/BTEC Extended Diploma)
English language requirements	GCSE English Language at grade C/4 or above (or equivalent). Alternatively, applicants can sit the QA Higher Education English test.	



# Health and Social Care

## Example modules

### Foundation year

- Critical Thinking
- Reflecting on Self and Society
- Media, Crime and Race
- Researching Discrimination
- Interventions for Change
- Social Issues in Context: Text to Essay

### Year 1

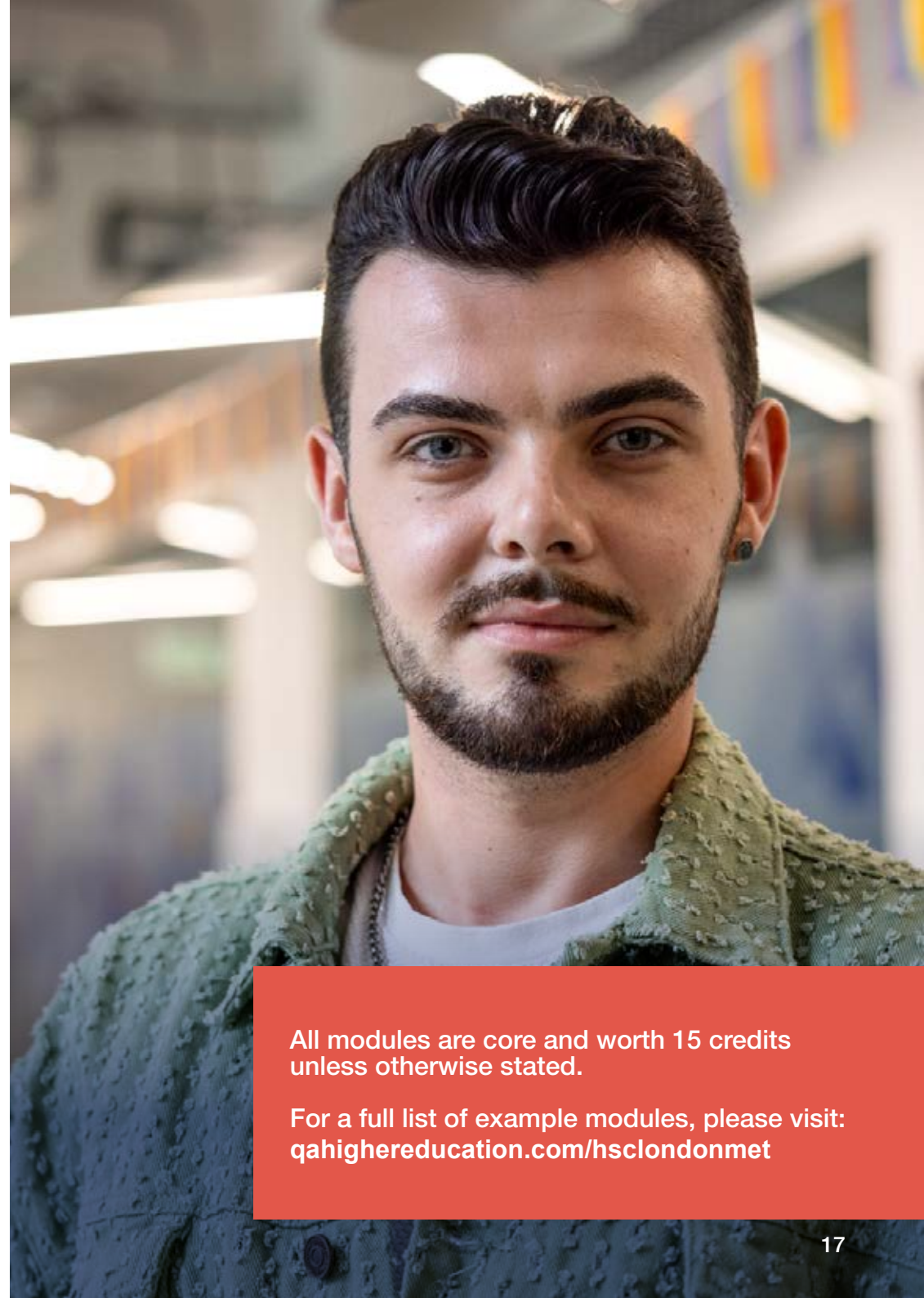
- Introduction to Health & Social Care: Concepts of Health & Well-being (30 credits)
- The Context of Health & Social Care: Cultural, Social & Ethical Perspectives (30 credits)
- An Introduction to Knowledge and Inquiry in Health & Social Care
- Personal & Professional Development: Self-management
- Introduction to Effective Practice in Health & Social Care
- Academic Skills & Literacy: Finding & Presenting Information

### Year 2

- Advancing the Health of the Population: Understanding Public Health (30 credits)
- Ethical Research in Professional Contexts (30 credits)
- Personal & Professional Development: Managing Professional Relationships
- Issues in Health, Illness and Society
- Academic Skills & Literacy: Developing Critical Thinking
- Becoming Employable

### Year 3

- Effective Responses to Emerging Issues in Health & Social Care (30 credits)
- Personal & Professional Development: Management & Leadership of Others
- Global Health (optional)
- Mental Health & Well-being (optional)
- Academic Skills and Literacy: Effective Critical Thinking' (Core)
- Health Project (30 credits)



All modules are core and worth 15 credits unless otherwise stated.

For a full list of example modules, please visit: [qahighereducation.com/hsclondonmet](http://qahighereducation.com/hsclondonmet)

# Student support



## ACE team

The Academic Community of Excellence (ACE) team are always on hand to help you excel within your academic career. They offer the following free services:

**Tutorials:** one-to-one tutorials are available to help you develop your academic skills

**Workshops:** learn critical academic skills to help plan assignments, use sources and avoid plagiarism

**Self-access Learning Materials:** a collection of materials based on common questions and needs of current students and alumni.

Find out more:

[qahighereducation.com/ace](http://qahighereducation.com/ace)



## Careers and employability team

Our Careers and Employability service offers friendly advice to help you plan your career. On the Careers Portal, you can find out more about internships & placements or book a one-to-one appointment with our career consultants.

Their areas of expertise include:

- General career advice
- Job searching
- CV writing skills
- Application form guidance
- Interview preparation

Find out more:

[qahighereducation.com/careers](http://qahighereducation.com/careers)



## Library service

Our librarians are available to help you get the most out of your learning and research resources on-campus and online. They also offer one-to-one consultations for personalised support, bookable through the Library Portal, which has a range of videos, guides, databases and more.

Find out more:

[qahighereducation.com/library](http://qahighereducation.com/library)



# Student support



## Welfare team

The dedicated welfare team work alongside mental health practitioners and a counselling service to support you when you need it during your studies. The team are on hand for any queries or personal matters that you may come across during your studies, and are here to help, no matter how big or small you think your issue is.

Find out more:

[qahighereducation.com/welfare](http://qahighereducation.com/welfare)



## Accommodation team

Whatever your budget, location or accessibility needs, our expert team will guide and support your transition to your new home.

Our team can help you with:

- Private rentals
- Shared accommodation
- Homestays

Find out more:

[qahighereducation.com/accommodation](http://qahighereducation.com/accommodation)

# Blended learning

Learning in a blended way helps you to develop the digital skills needed for the digital workplace.

The world is fast becoming more digital-focused with hybrid working becoming a permanent feature for many businesses across the globe. We aim to ensure that our students are equipped with the knowledge, skills and competencies to achieve course learning outcomes and the confidence to succeed in the digital revolution.

## How does blended learning work?

Blended learning combines live online learning with face-to-face on-campus sessions. This flexibility means students can balance studying in and around other commitments whilst also building friendships and joining a community both live online and on-campus.

Blended timetables will typically follow one of the below:

**Daytime students** – you will have two days of tuition per week, with a fifty percent split on-campus and live online.

**Evening and weekend students** – you will have two evenings of live online study and one weekend day of face-to-face learning on-campus, or two evenings face-to-face on campus learning and one weekend day live online.

Find out more:

[qahighereducation.com/blended-learning](http://qahighereducation.com/blended-learning)



# Fees and funding

Finances are an important consideration for all students. A variety of funding is available for students based on your individual circumstances. UK/Home students can benefit from tuition fee and maintenance loans which can be used to supplement living expenses.

## Tuition fee loan

You can receive a Tuition Fee Loan from Student Finance England (SFE) if you live in England and you have secured a place in higher education for studying your first degree or other higher education course.

This loan doesn't depend on your household income and is paid directly to the University on your behalf. In addition to the tuition fees, you should be prepared to buy some of the course texts which are around £30 each. This would average around £200 per annum.

## Maintenance loan

Full-time UK/Home undergraduate students can also apply for a Maintenance Loan to help towards living costs, such as accommodation, food, books, travel and other expenses.

The amount you can borrow depends on where you live, where you study and your household income. Maintenance Loans are paid straight into your bank account and will be transferred in three payment instalments at the start of each term.

## Living costs

It's important that you are aware of your everyday costs as a student and how these differ between cities.

Your living costs need to cover everything from accommodation and utility bills to socialising and food costs.

For more information, eligibility and full terms and conditions please visit:  
**[www.gov.uk/student-finance](http://www.gov.uk/student-finance)**



# How to apply

Our friendly admissions team are here to help you through every step of your application process.

## Non-standard entry

Applicants may be able to satisfy their course requirements by substituting a combination of alternative qualifications to the same standard as defined by UCAS. Applicants are encouraged to provide all qualifications that attract UCAS tariff points in their application. These qualifications may be considered by the University should conditional offer grades be narrowly missed.

## What happens next?

The admissions team will consider your application and send you details of the outcome. Successful applications will receive an offer to study along with details for registration and enrolment.

For more information visit:

[qahighereducation.com/londonmet](http://qahighereducation.com/londonmet)



1  
2  
3  
4  
5

Find your chosen programme

Make sure you meet the minimum entry requirements for your chosen course

Once you have decided which course you want to apply for, you can begin your application

Draft your personal statement carefully so that it reflects your choice of course(s) and why you have chosen them

Submit your application along with your supporting documents via our online admissions portal



LONDON  
METROPOLITAN  
UNIVERSITY

IN PARTNERSHIP WITH



# Undergraduate Prospectus

## Contact us

[qahighereducation.com/londonmet](http://qahighereducation.com/londonmet)

Tel: (+44) 020 3925 1206

### London

10 Rosebery Avenue,  
London,  
EC1R 4TF

### Birmingham

Louisa Ryland House,  
44 Newhall St,  
Birmingham,  
B3 3PL

### Manchester

Saint James Buildings,  
61-95 Oxford Street,  
Manchester,  
M1 6FQ