

**University
of South
Wales**

IN PARTNERSHIP WITH



CARDIFF | NEWPORT | PONTYPRIDD

qa.southwales.ac.uk

A smiling man with a beard, wearing a red and white tracksuit, is sitting on concrete steps outdoors. The background is a dark, textured wall.

INTERNATIONAL PATHWAY PROGRAMMES 2023-2024

CONTENTS

Welcome	4
Why USW	6
Locations	8
Accommodation	18
Student Life	20
USW Sport	22
Our Pathway Programmes	24
Student Support	34
Finances	36
How to Apply	38

**USW welcomes
2,500 students
to its global
community each
year, from over
180 countries all
over the world.**

LOCATIONS

Cardiff is the fastest growing major city in the UK (PwC, 2022) and is home to thousands of students from around the world.

PAGE 8



ACCOMMODATION

We want you to feel at home while you are studying at USW, that's why we offer a range of good quality accommodation.

PAGE 18

Search: USW International



新浪微博
weibo.com



OUR COURSES

If you need to build on your existing qualifications to meet degree entry requirements, our programmes are designed to do just that.

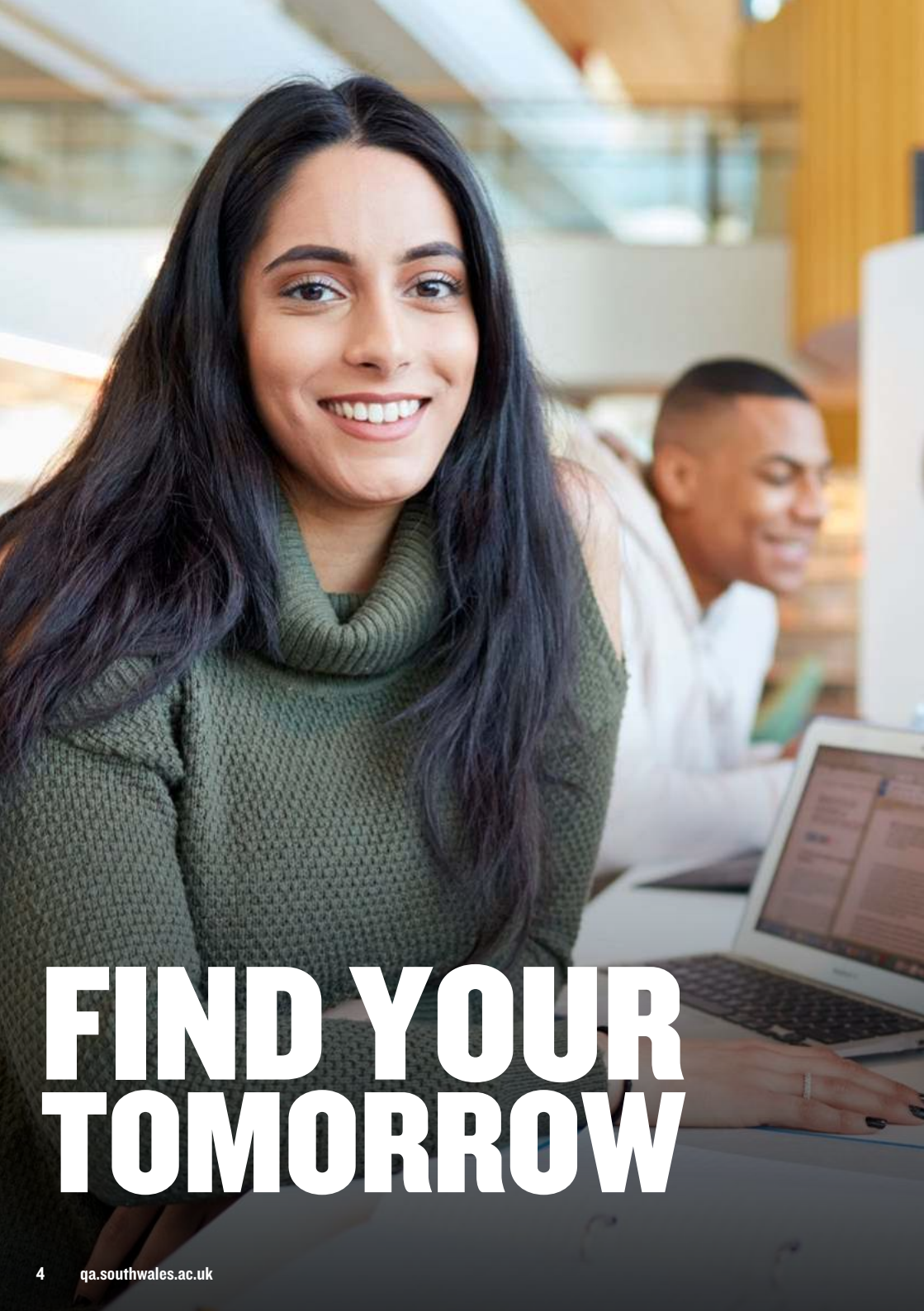
PAGE 24

STUDENT SUPPORT

For wellbeing and advice, you'll find a network of people ready to help.

PAGE 34





FIND YOUR TOMORROW

WELCOME

USW has ambition and intent. We explore and share ideas. We widen access to learning and serve our learners with passion and equip them for success. We are a modern, forward-thinking university. We are the University for Tomorrow.

The University of South Wales is one of the largest universities in the UK, offering our students excellent opportunities and prospects.

A course at USW is more than just a qualification. Inside and outside the classroom, we help you achieve your full potential professionally and personally.

At the University of South Wales Pathway, we pride ourselves on helping international students to kick-start their career, by providing tailored routes of study leading to degree-level education.

Read on to discover how USW will help you to find your tomorrow.

“ Our students are at the heart of everything we do. We make a positive difference to the lives of our students, equipping them with the skills they need for tomorrow. If you choose USW, we will broaden your horizons, teach you new ways of looking at the world around you, and unlock your potential to make the most of your career.

Dr Ben Calvert
Vice-Chancellor





**BECOME QUESTIONING,
BRAVE, SOCIABLE.
A SUCCESSFUL
GRADUATE**

WHY USW?



Large
University



Global
Community



Generous
Scholarships



Career
focused



Varied
Choice



Flexibility
January & October
start dates



Value
for money



High
Achieving
Alumni



Study
support



Placements
accreditation and over 600 programmes



Student Outcomes
95% of our graduates are in
employment or further study
within 6 months of graduation
(Graduate Survey DLHE, 2018)



Cardiff Bay, Cardiff



DISCOVER SOUTH WALES

The university is in south Wales, UK, with campuses in and around Cardiff, the capital city of Wales. 

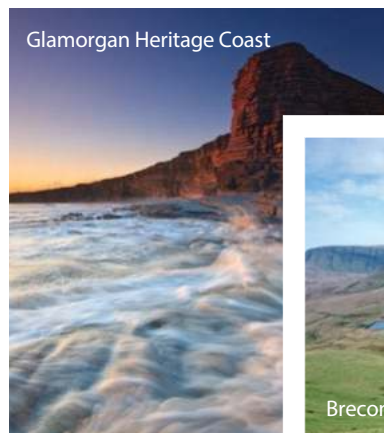
South Wales has vibrant city life, culture, nightlife and music festivals, award-winning beaches, outdoor adventure, history and breath-taking countryside. There are excellent links to all major cities in the UK, and London is just two hours away by train.

Wales is a country in its own right, but is part of the UK. It has its own unique culture and is a welcoming place to live and study. It is safe and affordable, and our students love the friendly atmosphere at USW.

All our campuses are easily reached by road, rail and air, with an international airport in Cardiff, so you're never far from home.



Glamorgan Heritage Coast



Brecon Beacons



 USW

 Locations

 Airports

Travel times to Cardiff

London		2 hours
Birmingham		2 hours
Bristol		50 minutes
Manchester		3 hours



There are a lot of reasons for choosing to study in south Wales, for example, Wales offers a low cost of living compared to other parts of the UK. Food, accommodation, entertainment, travel and education are all very affordable.

Nurshuhada Abdul Rahman,
Malaysia.



Cardiff Castle, Cardiff

Cardiff is a modern, multicultural and safe city. It's a great place to live and study, and is home to thousands of students from around the world.

Cardiff is the fastest growing major city in the UK (PwC, 2022). Here you'll find an amazing quality of life, fantastic people, and stunning natural environment, with Bute Park in the top 10 most valuable green spaces in the UK (The Guardian, 2022). It is a small city, but there's lots going on and it's easy to get around.

Cardiff is also one of the most affordable cities in the UK. It's a popular student city that knows how to enjoy itself. From shopping to live sport to music, arts and history, there's something for everyone and great company to do it with.



THE PURPLE FLAG HAS BEEN AWARDED TO THE CITY OF CARDIFF FOR OFFERING AN ENTERTAINING, DIVERSE, SAFE AND ENJOYABLE NIGHT OUT FOR A THIRD YEAR IN A ROW (2020-2022)



LOVE CARDIFF

“ Wales without doubt has become one of my favourite spots in the UK because of its cosy feeling and how easily you can fit in, which helped me feel at home. The people are very warm and friendly, and Cardiff in particular is multicultural.

Muhammed Kalash,
Libya.

USW PONTYPRIDD

All of our Pathway courses are delivered at USW Pontypridd, just 20 minutes from Cardiff city centre by train.

USW Pontypridd is surrounded by green open spaces. Our students say they love the community atmosphere, and the convenience of living and studying in the same place. If you are progressing onto an undergraduate degree within the South Wales Business School or the School of Engineering, your undergraduate study will be at USW Pontypridd.

From historic buildings to modern structures, USW Pontypridd reflects the University's history and its ambitions. Here, everything you need is in one place – your classes, the library, cafes and bars, and friends to spend time with.

USW Pontypridd is our largest campus and is made up of two sites: Treforest and Glyntaff. There is a train station next to campus with regular trains to Cardiff and links to the rest of the UK.



“ South Wales is definitely somewhere you can make a home away from home. I've adopted a healthy lifestyle by joining the gym and making the most of the opportunities available to me. My overall experience here has been amazing.

Oscar Ferreira do Carmo,
Brazil.



USW Pontypridd, Treforest

USW CARDIFF

**Cardiff is a modern, multicultural capital city.
Our campus for the creative courses is in Cardiff city
centre, putting you at the heart of the country's capital.**

Upon successful completion of your Pathway programme, you will progress onto your undergraduate degree at one of our three campuses. If you are progressing onto a Creative Industries degree you will study at the USW Cardiff campus, in the heart of the country's capital.

At USW Cardiff you can develop your creative work in a professional environment. You'll find modern specialist facilities, study spaces, a library and the Students' Union – all in one building.

Cardiff is well known as a city of culture and entertainment, so there are many opportunities for creative industries students. It's a great place to start your career.



**See what the Welsh
capital has to offer
to students**



USW Cardiff

USW NEWPORT

Newport is an independent, multicultural city that's full of ideas and opportunities.

Just 20 minutes from Cardiff, USW Newport is at the heart of the city of Newport, overlooking the River Usk. Our modern campus is on the riverfront, home to a community of learning that's dedicated to improving people's lives.

Like the rest of USW, our Newport Campus is diverse and friendly. Everything you need is in one place, like the library and cafes, and most other things can be found in the city around campus. Halls of Residence are just a couple of minutes' walk from campus, with different room packages to choose from.



Studying at USW.
Location and virtual tour.



Friars Walk, Newport

ACCOMMODATION

“
I LIVE IN HALLS
ON CAMPUS. IT IS
CONVENIENT AS IT'S
VERY CLOSE TO MY
CLASSES, LIBRARY,
STUDENTS' UNION,
AND SPORT CENTRE.

Sharif Khoshnaw
Kurdistan.



Mountain Halls, USW Pontypridd

We want you to feel at home while you are studying, so we have a range of good quality accommodation.

Pontypridd Halls

USW has Halls on campus at Pontypridd, so you can live and study in a friendly, community atmosphere loved by our students. There are nearly 1,200 rooms of different sizes, and 20 self-contained studio flats.

- From £111 per week*
- Own room with en suite shower and toilet
- Shared kitchen, dining and living area
- Mini fridge
- Self catering
- Internet access and bills included
- Insurance for personal belongings
- Smart phone app/card operated laundry
- Staffed 24 hours a day

Privately rented accommodation

If you don't want to live in Halls, private accommodation could be an option. We keep a database of registered landlords whose properties meet standard and safety regulations: www.southwales.ac.uk/accommodation

How will I pay?

International and EU students must pay Halls rental in full at the beginning of the academic year unless they use the services of our UK guarantor company. For further information about our approved UK guarantor company, please contact accomm@southwales.ac.uk. Students staying in a privately rented house should refer to their contract for payment details.

Mountain Halls, USW Pontypridd



Halls of Residence, Newport



We have lots of accommodation options, so you can choose what suits you best. Our Accommodation Team will send you an email inviting you to apply once you hold a firm offer of a place on your course.

qa.southwales.ac.uk/accommodation



* Based on 2022 prices. Please check our website for the latest information.



STUDENT LIFE

You are expected to study, but your time at university should also be fun. Whatever your interests, there is a huge range of clubs, societies and a diverse social life at USW.



Students' Union Building, USW Pontypridd

Students' Union

The Union is where you can play sport, make new friends from all over the world, get advice, find work and have your voice heard. You automatically get membership of the Students' Union when you enrol.

Clubs and societies

If you join a club or society, you will meet lots of new people and get involved in all sorts of activities, from demonstrations and day trips, to nights out and parties.

Social life

There is lots of entertainment at the Union. It's a friendly place, where you can watch live sport on the big screen, enjoy a meal, grab a coffee, or just take a break and relax. In the evenings, you can enjoy live bands, pub quizzes, film screenings, theme nights and more.

Want to know more about living in South Wales or what it's like to study at USW?

Message one of our friendly student ambassadors – they're here to help:
www.southwales.ac.uk/chat/



USW Bloggers

Students' Union Officers, 2022-23



SPORT AT USW

USW Sport has some of the best facilities in the UK, offering clubs, courses and qualifications.

USW Sport is for everyone. Trying a new sport or joining a club is a great way to make friends – from indoor climbing to yoga, archery and everything in between, there's sure to be something you'll enjoy.

Get active, stay healthy

The Sport Centre at USW Pontypridd has everything you'll need. All students can use the Sport Centre at Pontypridd, but we've arranged discounted rates with gyms and health clubs in Cardiff and Newport for students who live or study in the city.

USW has a strong competitive sport environment and it's a major part of student life. We have over 60 teams playing in the British Universities and Colleges (BUCS) leagues. Over the last few years, we've had outstanding success in football, rugby, basketball, water polo, swimming, volleyball and badminton.

www.southwales.ac.uk/sport

USW Sport Park

This is one of the best university sport coaching and training venues in the country.



Our full-sized indoor football pitch is the only one at a university in England and Wales and is built to FIFA Pro and World Rugby 22 standard.

We have 11 other pitches, including four floodlit pitches, an artificial training pitch and a 3G rubber crumb floodlit football pitch.



Our sports hall includes a national standard six badminton court with sprung floor.

Specialist centre for strength and conditioning with 12 lifting platforms, providing a high-performance environment for aspiring athletes.



USW Sport Park

OUR PATHWAY PROGRAMMES



If you're looking to study at the University of South Wales and need to build on your existing qualifications to meet the entry requirements, our Pathway programmes are perfect for you. Our Pathway programmes will help you develop your English language ability and academic study skills to offer you progression onto your chosen undergraduate degree at the University of South Wales.

- Prepare yourself for UK undergraduate studies
- Become familiar with living and studying in the UK
- Different start dates depending on your English level
- Be a part of a university campus from day one, with access to all of the university's facilities
- Learn alongside like-minded international students, from all across the world, who are progressing onto further study at the University of South Wales

Courses

International Foundation Programme

- Business & Social Science Pathway
- Computer Science Pathway
- Creative Industries Pathway
- Engineering Pathway
- Applied Science Pathway
- Sports Science Pathway

See page 28

International Year One Business

Fast-track entry to Year two of a number of undergraduate degrees offered by the South Wales Business School, including:

- BA (Hons) Business and Management
- BA (Hons) Human Resource Management
- BSc (Hons) Logistics, Procurement and Supply Chain Management
- BSc (Hons) Marketing Management

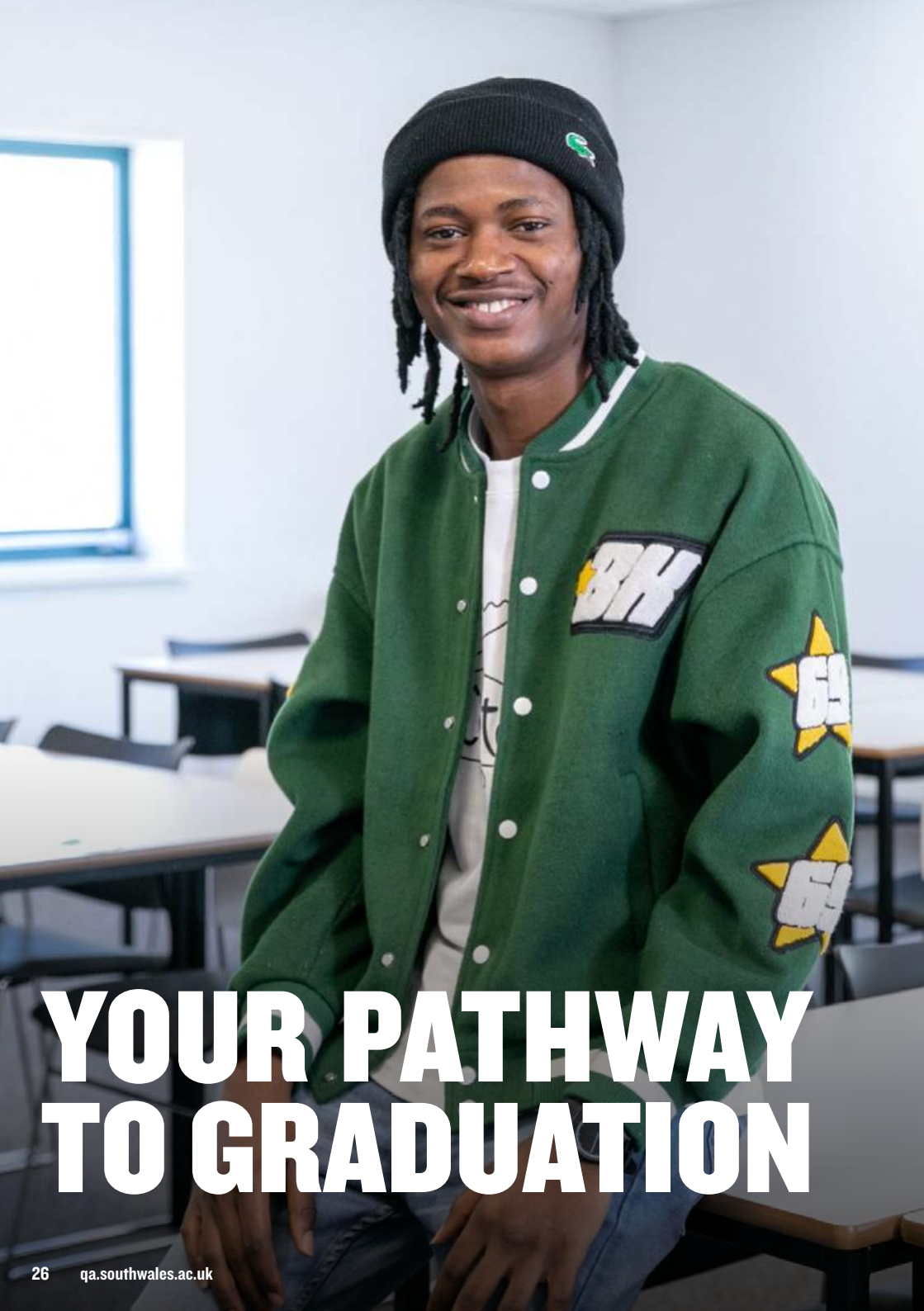
See page 30



Find out more:

For information on course content, start dates and fees make sure you visit qa.southwales.ac.uk/courses





YOUR PATHWAY TO GRADUATION

International Foundation Programme:

Entry Requirements:

GCSE/IGCSE – 5 Passes at 9-4/A-C

English Language Requirements (from a UKVI SELT):

2 terms: IELTS 5.0,
with no single element below 4.5

3 terms: IELTS 4.5,
with no single element below 4.0

International Year One Business:

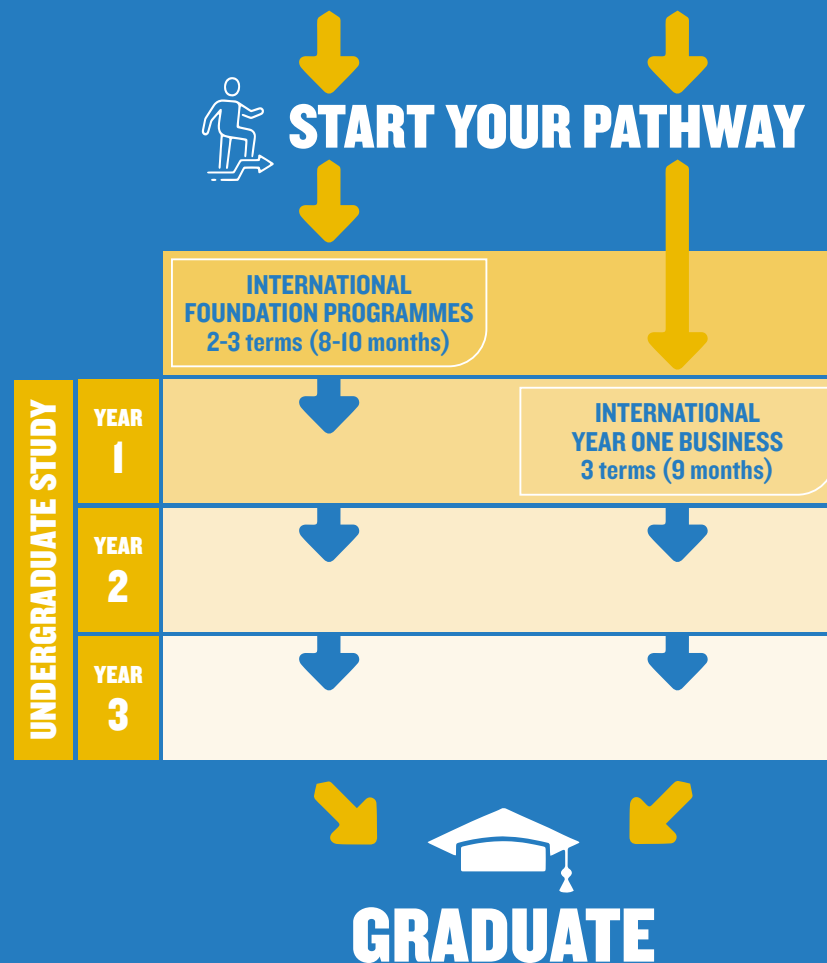
Entry Requirements:

Good high school grades or equivalent

English Language Requirements (from a UKVI SELT):

IELTS 5.5 with no band below 5.5

If you have the equivalent of IELTS 5.5 overall with no sub-score below 5.5, you will be able to apply for a joint CAS.



INTERNATIONAL FOUNDATION PROGRAMME

Level	Foundation – NQF Level 3	
Start dates	October and January	
Duration	2 terms (8 months)	3 terms (10 months)
Tuition fee	£11,000	£13,500
Mode of study	Full time, seminars, lectures, workshops and tutorials	
Class hours per week	16-20	
Maximum class size	18	
Assessment	Coursework, presentations, portfolios, projects and in-class tests	

The International Foundation Programme offers an excellent opportunity to fully prepare for your undergraduate studies and adjust to life in the UK.

You will develop English language skills relevant to your subject, studying alongside other international students in a friendly and supportive learning environment. You will be guided by academics, tutors and support staff with experience in supporting international students in this important transition.

- Prepare for UK undergraduate studies
- Build your intercultural skills and integrate with UK student life
- We offer 2 and 3 term course durations on this course, depending on your English language level
- 6 subject specific pathways, guaranteeing you entry to one of over 60 undergraduate degrees at the University of South Wales
- Study in a fully embedded Pathway College where you're part of the university campus from day one

Example Modules

English Term 3 term programme only	<ul style="list-style-type: none"> • Language & Skills for Academic Study (0 credits)
Core Modules	<ul style="list-style-type: none"> • Academic English • Academic Language in Context • Applied Academic Skills • Research Project
Pathway specific modules All single modules are 20 credits unless otherwise stated.	<p>Applied Science</p> <ul style="list-style-type: none"> • Physical and Earth Sciences Fundamentals • Biological Sciences Fundamentals <p>Business & Social Science</p> <ul style="list-style-type: none"> • Humanities & Social Science in Action • Management Fundamentals <p>Computer Science</p> <ul style="list-style-type: none"> • Foundation Mathematics • Introduction to Computing and Coding <p>Creative Industries</p> <ul style="list-style-type: none"> • Foundations for the Creative Industries • Creative Project <p>Engineering</p> <ul style="list-style-type: none"> • Foundation Mathematics • Introduction to Engineering Design and Problem Solving <p>Sports Science</p> <ul style="list-style-type: none"> • Management Fundamentals • Biological Sciences Fundamentals

Further study

In order to progress onto your chosen undergraduate degree you must achieve a minimum of 40% on your Pathway programme. For more information on progression, see page 32.



INTERNATIONAL YEAR ONE BUSINESS

Level	NQF Level 4 – first year of an undergraduate degree
Start dates	October and January
Duration	3 terms (9 months)
Tuition fee	£13,500
Mode of study	Full time, seminars and workshops
Class hours per week	16-20
Maximum class size	18
Assessment	Coursework, presentations, unseen exams and online tests

The International Year One Business is a degree preparation programme for international students who want to study on one of the many undergraduate business degrees at the University of South Wales, but need additional support to gain direct entry into year two of their undergraduate degree.

The programme is the equivalent of the first year of an undergraduate degree and on successful completion of the International Year One, you will join directly into year two of your chosen programme of study.

- Progress to South Wales Business School
- Equivalent to first year of undergraduate degree
- More support and teaching hours than a typical first year undergraduate degree
- Gradual introduction to UK academic life
- Study modules that mirror those delivered by the Business School on the undergraduate year one
- Complete your degree in 3 years (4 years with a work placement year)

Example Modules

Core modules

All modules are 20 credits unless stated otherwise.

- Business Academic Skills (0 credits)
- Business Entrepreneurship
- Business in a Global Context
- Organisational Behaviour
- Principles of Marketing
- Professional Enquiry
- Supply Chain and Operation Management

Further study

In order to progress onto your chosen undergraduate degree you must achieve a minimum of 40% on your Pathway programme. Upon successful completion you can progress to the second year of the following undergraduate degrees at the South Wales Business School:

- BA (Hons) Business and Management
- BA (Hons) Human Resource Management
- BSc (Hons) Logistics, Procurement and Supply Chain Management
- BSc (Hons) Marketing Management

For more information on progression, see page 32.

PROGRESSION

On this page you can see the undergraduate courses that are available to you, beneath the Pathway programme that you will need to study. When you find your target undergraduate degree, you will also see which campus your undergraduate studies will be taught at.

International Foundation Programmes:

To progress onto the **first year** of your chosen undergraduate degree you must achieve a minimum of 40% on your Pathway programme.

International Year One:

To progress onto the **second year** of your chosen undergraduate degree you must achieve a minimum of 40% on your Pathway programme.

- USW Cardiff Campus
- ▲ USW Newport Campus
- ◆ USW Pontypridd Campus

Progression degrees for this Pathway are currently under review and may change. Please refer to the course page online for the most up-to-date information.

All course information is correct at the time of printing in January 2023. To ensure you have the most up-to-date information please visit our website.

Progression degrees are under review and may change. Please refer to the course pages online for the most up-to-date information.

*Additional entry requirements apply. This includes a DBS check and for creative courses an interview and portfolio.

**Please note that professional body accreditation may not be applicable to USW Pathway College students progressing to these courses.

APPLIED SCIENCE

BSc (Hons) Biology	◆
BSc (Hons) Biomedical Science	◆
BSc (Hons) Environmental Science	◆
BSc (Hons) Forensic Investigation	◆
BSc (Hons) Forensic Science	◆
BSc (Hons) International Wildlife Biology	◆
BSc (Hons) Medicinal and Biological Chemistry	◆
BSc (Hons) Natural History	◆
BSc (Hons) Pharmaceutical Science	◆

BUSINESS & SOCIAL SCIENCE

BA (Hons) Accounting and Finance	▲ ◆
BA (Hons) Business and Management	◆
BSc (Hons) Childhood Development*	◆
LLB (Hons) Criminal Justice	◆
BSc (Hons) Criminology and Criminal Justice and Youth Justice	◆
BSc (Hons) Criminology and Criminal Justice with Psychology	◆
BA (Hons) Fashion Business and Marketing	●
BA (Hons) Forensic Accounting	◆
BSc (Hons) Health and Social Care Management*	◆
BA (Hons) Hotel and Hospitality Management	▲
BA (Hons) Human Resource Management	◆
BA (Hons) International Business and Management	◆
BA (Hons) Journalism	●
LLB (Hons) Law	◆
BSc (Hons) Logistics, Procurement and Supply Chain Management	◆

BSc (Hons) Marketing Management	◆
BA (Hons) Media, Culture and Journalism	●
BA (Hons) Music Business	●
BSc (Hons) Psychology	◆
BSc (Hons) Psychology with Counselling	◆
BSc (Hons) Psychology with Criminology and Criminal Justice*	◆
BSc (Hons) Psychology with Developmental Disorders*	◆
BSc (Hons) Sociology	◆
BA (Hons) Sports Journalism	●

CREATIVE INDUSTRIES

BA (Hons) Advertising Design	●
BA (Hons) Animation (2D and Stop Motion)	●
BA (Hons) Computer Animation	●
BA (Hons) Computer Games Design	●
BA (Hons) Creative and Therapeutic Arts*	◆
BA (Hons) Documentary Photography	●
BA (Hons) Fashion Design	●
BA (Hons) Fashion Promotion	●
BA (Hons) Film	●
BA (Hons) Graphic Communication	●
BA (Hons) Illustration	●
BA (Hons) Interior Design	●
BA (Hons) Media Production	●
BA (Hons) TV and Film Set Design	●
BA (Hons) Visual Effects and Motion Graphics	●

COMPUTER SCIENCES

BSc (Hons) Applied Cyber Security	▲
BSc (Hons) Computer Forensics	◆
BSc (Hons) Computer Games Development	◆
BSc (Hons) Computer Science	◆

BSc (Hons) Computer Security	◆
BSc (Hons) Computing	▲ ◆
BSc (Hons) Information Communication Technology	◆

ENGINEERING

BEng (Hons) Aeronautical Engineering	◆
BSc (Hons) Aircraft Engineering and Maintenance Systems	◆
BEng (Hons) Automotive Engineering	◆
BEng (Hons) Civil Engineering	◆
BSc (Hons) Civil Engineering	◆
BSc (Hons) Construction Project Management	◆
BEng (Hons) Electrical and Electronic Engineering	◆
BEng (Hons) Mechanical Engineering	◆
BSc (Hons) Mechanical Engineering	◆
BSc (Hons) Quantity Surveying and Commercial Management	◆

SPORTS SCIENCE

BSc (Hons) Sport and Exercise Therapy	◆
BSc (Hons) Sport and Exercise Science	◆
BSc (Hons) Strength and Conditioning	◆
BSc (Hons) Football Coaching and Performance	◆

INTERNATIONAL YEAR ONE BUSINESS

BA (Hons) Business and Management	◆
BA (Hons) Human Resource Management	◆
BSc (Hons) Logistics, Procurement and Supply Chain Management	◆
BSc (Hons) Marketing Management**	◆

STUDENT SUPPORT

Students at the University of South Wales have access to a variety of specialist support services. As international students you're bound to have some questions, and we make sure that there are teams available to best support you.

Advice Zones

Each campus has its own Advice Zone where students can ask questions and book appointments with specialist advisers. The team provide fast, accurate advice, so you can focus on your studies.

Immigration & International Student Advice (IISA)

Our IISA team provide advice on immigration regulations and offer specialised advice and information for international students. They also provide opportunities that improve the international student experience and promote internationalisation.



Disability Service:

The Disability Service provides information, advice and guidance, and co-ordinates disability-related support for USW students.

Religion:

The Chaplaincy at USW is available as an open and affirming service to all students on all campuses.

Wellbeing Service:

The Wellbeing Services offers free advice, counselling and support. Get support and resources for your overall wellbeing, including physical and mental health, and social welfare.

Campus Life Co-ordinators:

Co-ordinators look after students living in Halls and are a useful contact for any Halls-related issues.

Student Mentoring:

Student-to-student mentoring schemes aim to make your start to university life easy and enjoyable, with practical advice and support.

USW Careers:

USW Careers can help you find your career direction, check your CV, secure a placement, provide a mock interview and more and also provide support after graduation.





As a Pathway student, you will have two main types of expenses – tuition fees and your living costs. Some courses may have additional or optional costs – for field visits or equipment, for example – and you can find details of these on our online course pages.

Cost is an important factor for most students and we fully appreciate what a big investment you are making in your future. We want to support you so that financial pressures do not get in the way of your studies.

Contact our team and view all our information on finances and payments here:
qa.southwales.ac.uk/finance

Scholarships and Bursaries

You may be eligible for one of our generous scholarship or bursary packages. We aim to support self-funded international students on their journey to study with us, so get in touch to see how we

can help you. You can find details of our financial support packages and eligibility here:
qa.southwales.ac.uk/finance

Progression Discount

You may be eligible for a progression discount that will reduce your undergraduate fees. For more information please visit: qa.southwales.ac.uk/finance

Tuition Fees

International Foundation Programme:

2 terms: £11,000

3 terms: £13,500

International Year One:

£13,500

Paying your fees

For more information and guidance on paying your tuition fees, please visit:
qa.southwales.ac.uk/finance

Available payment methods include:

- Bank Transfer
- Visa Credit
- Visa Debit
- Visa Electron
- Mastercard
- American Express

If you are experiencing any unforeseen financial difficulties in paying your Tuition Fees you must contact the Finance Team for support and advice as soon as possible.

QAHEFinanceSupport@qa.com
+44 (0)20 4502 7909



HOW TO APPLY



1

CHECK YOUR ELIGIBILITY

Check which Pathway course is most suitable for you and the minimum grades for your progression course.

Find out more: qa.southwales.ac.uk/progression-degrees



2

CONTACT US qa.southwales.ac.uk/contact

If you would like more information, please contact us and our advisers will be able to discuss the details of your academic history and recommend the best Pathway programme for you.



3

START YOUR APPLICATION

Once you have decided on the course you want to apply for, click the 'Apply online' link on the course page to begin your online application.



4

COLLECT YOUR SUPPORTING DOCUMENTS

To submit a successful application to the University of South Wales Pathway, you need to submit supporting materials. This will include a copy of your passport, references and current and previous UK visas.



5

DRAFT YOUR PERSONAL STATEMENT

Be sure to draft your personal statement carefully so that it reflects your choice of course(s) and why you have chosen to apply for the University of South Wales Pathway.



6

SUBMIT YOUR APPLICATION

Submit your application along with your supporting documents.



The Pathway programmes in this prospectus are delivered by the University of South Wales Pathway Campus, a college of the University of South Wales which is jointly owned by the University of South Wales and QA Higher Education – a UK higher education provider. These programmes are validated by the University and taught by the University of South Wales Pathway campus staff.

The University of South Wales and QA Higher Education are committed to being equal opportunities education providers and will therefore make reasonable adjustments for disabled applicants and students. The information given in this publication is accurate at the time of going to print in January 2023 and the University and QA Higher Education will use all reasonable efforts to deliver the programmes as described.

The University and QA Higher Education reserve the right to withdraw or change the programmes or programme combinations included in this prospectus. These changes will only be made as a result of UK legal compliance, minimum student number requirements or for course validation reasons and applicants will be contacted by the University or QA Higher Education at the earliest opportunity in the instance of these changes occurring.

Please check the website for up-to-date information on our programmes.

WHAT NEXT?

There are lots of ways to connect with us and find out more about USW.

1



Find out more about USW:
qa.southwales.ac.uk

2



Visit the 'Your Country' pages on our website.

3



Check the latest fees and scholarships information.

4



Contact us or our representatives in your country to answer any questions you may have.

5



Search:
USW International



新浪微博
weibo.com

