



**Northumbria
University**
NEWCASTLE

Newcastle • London • Amsterdam

#TakeOn Tomorrow

**London Campus
Prospectus 2024/25**

london.northumbria.ac.uk

University of the Year, 2022. Times Higher Education (THE) Awards.

The impressive win recognises exceptional performance, as well as bold, imaginative and innovative initiatives that have advanced a Higher Education institution's reputation during the academic year 2020/21.

It marks Northumbria's remarkable transformation to become the UK's first research-intensive modern university.

The strategy, which began in 2008, embedded quality research at the centre of everything that the University does, alongside a clear social mobility mission, and alignment to business and the demands of the regional and local economy.

To find out more about the win, visit northumbria.ac.uk/theawards

Chancellor
Baroness Tanni Grey-Thompson
DBE DL

Vice-Chancellor and Chief Executive
Professor Andy Long
FREng

Academic Registrar
Maureen McLaughlin
BA, PGDip

CONTENTS

Why Northumbria?

Discover why you should study at Northumbria – a research-rich, business focussed, professional university with a global reputation for academic excellence.

Check out pages 4 – 11

Where You Belong

Learn more about life both at Northumbria and in the city of London. Become part of the #IAmNorthumbria family.

Check out pages 12 – 21

This is Your Time

Discover how to make the most of your time studying at Northumbria. Enhance your CV and build connections for your future.

Check out pages 22 – 27

Careers and Employment

At Northumbria we'll support you at every step of the journey. Whether it's helping you understand the application process, applying for that dream job, or just coping with the transition to university life.

Check out pages 28 – 33

It Starts Here

Whatever your passion or career ambitions, it's time to get into the details and find the perfect course for you. Read our admissions and selection process, and find out how to get in touch.

Check out pages 34 – 127

WE STAND READY

At Northumbria University we embrace tomorrow. We pursue new thinking, forge new partnerships, create and exchange new knowledge, and find new solutions.

Our inspirational academics, partners and students work together to tackle tomorrow's challenges head on. We're ready for the future whatever it may hold.

Confident and creative in everything we do, we offer leadership and direction in this fast-changing world. Those with courage will transform lives and make a remarkable impact on the world.

Tomorrow. How will you handle it? Join us today and we can tackle this exciting new world together.



OUR ACADEMICS ARE TAKING ON TOMORROW

Northumbria is leading debate and responding to today's challenges through ground-breaking research which is brought into the classroom.

Northumbria ranked in the top 25 in the UK for research power (Research Excellence Framework 2021): recording the highest rise in any institution for the second time. Our academics explore some of the world's most urgent and complex problems and use their research to fight disease, increase life expectancy and protect our planet. They ask the questions that mean we can tackle tomorrow's challenges.



Professor Clare Watt

*Department of Mathematics,
Physics and Electrical Engineering*

Creating new models of space weather to protect humanity in space.



Dr Andrew Nelson

Department of Applied Sciences

Using genomics sequencing to prevent pathogenic bacterial communities in pre-term infants.



Dr Sainan Sun

*Department of Geography
and Environmental Sciences*

Predicting the Antarctic's future contribution to sea level rise in a warming world.



Professor Neil Beattie

*Department of Mathematics,
Physics and Electrical Engineering*

Developing new materials for solar photovoltaics that will power the future world.



Professor Katy Jenkins

*Department of Geography and
Environmental Sciences*

Supporting women activists in the global south to demand more sustainable and equitable futures.



Dr Kyle Montague

*Department of Computer
and Information Sciences*

Designing accessible digital technologies to empower marginalised communities.

LEAD ON

We create confident leaders with the stamina, determination, talent and commitment to inspire and get results.

Fit for the 21st century and beyond, our students, staff and alumni do amazing things. Here are a handful of examples:



Michelle Poole
President, Crocs

Michelle graduated from Fashion Marketing (1992). She has held roles at Sperry, Top-Sider, Timberland, Kangol, Converse, MTV Europe and Pepe Jeans, and is currently President of footwear brand Crocs.



Sir Jonathan Ive KBE, Hon DCL, Hon FEng, RDI
Co-founder, LoveFrom & former Chief Design Officer, Apple

Sir Jony is a designer and joined Apple in 1992 as Chief Design Officer. Jony was responsible for all hardware, user interface and packaging design, as well as the major architectural projects Apple Park and Apple retail stores. In 2019, Jony and long-time friend and collaborator Marc Newson gathered the creative collective LoveFrom. He is a Design for Industry (1985) graduate.



Professor Sir Chris Whitty
KCB, FMedSci, Hon DSc
Chief Medical Officer (CMO) for England

Professor Whitty is the UK government's Chief Medical Adviser and head of the public health profession. He is also Chief Scientific Adviser for the Department of Health and Social Care and a practising NHS Consultant Physician. He is an LLM Medical Law (2005) graduate.



Professor Matt Baillie Smith
International Development

Working with the Swedish Red Cross, Matt is bringing to light the challenges faced by volunteering and developing ways to protect and support all volunteers.



TOP OF OUR GAME

Top 25 in the UK for research power

Research Excellence Framework, 2021

Research University of the Year and Modern University of the Year

Daily Mail University Guide, 2024

London is ranked No.1 world's best student city

QS Best Student Cities, 2024

Top 40 UK university

The Guardian University Guide and
Complete University League Tables, 2024

University of the Year

Times Higher Education Awards, 2022

Ranked in the top 30 UK universities

Times Higher Education Impact
Rankings, 2023

One of the best UK young universities in global rankings

Times Higher Education Young
Universities Rankings, 2023

Rated first class for sustainability

People and Planet University League
Table, 2023

WHERE YOU BELONG

Our London campus is based in the heart of the UK's capital, a world-recognised centre of enterprise and international commerce.

Our London campus boasts state-of-the-art resources and technology, ensuring our students receive a modern and engaging learning experience.

Ranked No.1 for the fourth consecutive year in the QS Best Student Cities (2024). London offers an opportunity to experience university life in a fast-paced and industry-focused environment.

We provide a secure base for you to enjoy all that a world-class city has to offer, so you get the best

of both worlds: engaging groups and individualised learning, within a city that has as many as 369,900 students in any one year.

Close to London's financial district, the London Campus is also ideally located for working professionals looking to study for a part-time postgraduate degree, enabling you to connect with like-minded individuals from various industries and leading companies, offering invaluable networking opportunities. Our highly popular postgraduate degrees can immediately benefit your current position as well as support you in the next step in your career.

Find out more:
london.northumbria.ac.uk



I AM NORTHUMBRIA



At Northumbria we welcome talented, curious, confident and creative students and staff from all around the world.

We want you to embrace life at Northumbria, explore new opportunities, get involved and be part of our community of inclusive, like-minded people, who are making a difference.

Our culturally-diverse environment will stimulate ideas, innovation and debate to enhance your learning and student experience. We're passionate about what we do and we are proud of our community.

By joining Northumbria you are joining a global family. Our alumni stay connected to Northumbria to offer future talent new opportunities. So even after you graduate, you'll always be a part of Northumbria.



London is internationally recognised as being one of the most popular student cities in the world*. We're proud to call it our home.

Its diverse and inclusive culture and vibrant atmosphere make it one of the most exciting cities in the UK.

There's something for everyone with its blend of old and new, classic and modern, and memorable architecture and landscapes.

**QS Best Student Cities 2024*

16 Visit us at northumbria.ac.uk/london



The city offers a wealth of entertainment and activities to fulfil your university experience. From galleries and museums to theatres and music venues; from restaurants and cafés to pubs and clubs, there is so much to do within walking distance of our city campus.

"We're in central London. What could be better? It's very multicultural, dynamic and full of lots of opportunities."

Muhammad Taimoor | MSc Project Management with Advanced Practice

17



London is home to a wide range of accommodation; from en-suite top-of-the-range residences, to traditional student housing. Whether you're looking to socialise and meet new friends or prefer a quieter environment – there's something to suit all tastes and budgets.

Choosing where to live while you're studying in London is extremely important because it's where you'll spend most of your time when you're off campus. You can decide between en-suite rooms or standard rooms with shared living facilities. Most residences provide self-catering options, but there are also residences with catering available if you don't want to worry about cooking.

If you have any questions about the different options for accommodation or any other queries, please contact us:

T: +44 (0)20 3627 6101



Our London Campus allows students to combine the excellence of Northumbria University with a location in the capital's business and finance district. This offers you an excellent base to take full advantage of all that studying in one of the world's leading cities has to offer, including work experience and networking opportunities.

The campus is located a short walk from Liverpool Street, Shoreditch High Street, and Aldgate stations as well as being near numerous bus stops, making it easily accessible for travelling in from your accommodation.

London Living Costs – NatWest Student Living Index 2023

In addition to your course fees, there are other expenses that you will need to take into consideration when studying at university; below provides an average monthly breakdown of these costings:

Rent: £840.03 pm

Food: £106.77 pm

Social life: £39.57 pm

Household Bills: £35.76* pm

**Based on similar student spends within the city.*

The costs highlighted above are a rough indication only and were accurate at the time of printing in January 2023 - NatWest Student Living Index 2023.

WORLDWIDE CONNECTIONS

London is a very accessible city. With multiple airports, national rail links, and a well-known underground transport system, it is easy to explore the UK, Europe and more, and is why our Northumbria community hosts students from more than 100 countries across the world.

TRAVEL BY AIR

London has six major airports operating both domestic and international flights to cities including Newcastle, Manchester, Dublin, Amsterdam, Paris, Rome, New York and Lisbon. These are:

London City

London Gatwick

London Heathrow

London Luton

London Stansted

London Southend

TRAVEL BY COACH

National Express operates services from London. Approximate travelling times are:

Edinburgh - 10 hours

Newcastle - 6 hours

Manchester - 5 hours

Birmingham - 3 hours

TRAVEL BY RAIL

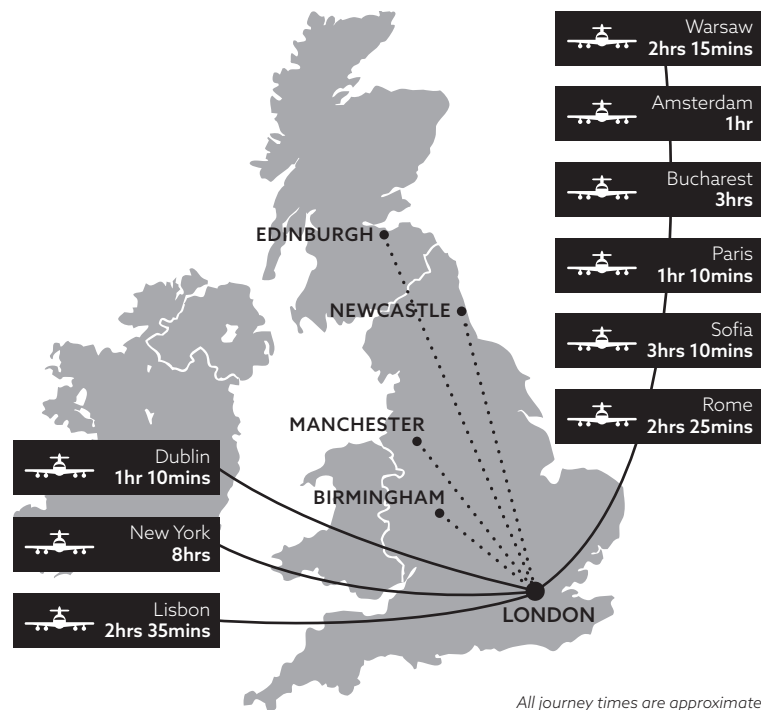
Rail services operate to many cities via national rail services and the Eurostar. Approximate travelling times are:

Edinburgh - 4h 30m

Newcastle - 3 hours

Manchester - 2h 10m

Paris - 2h 30m



TRAVEL BY ROAD

London is very well connected by the road system in the UK, with the A1(M) running from Scotland and the North, the M4 to the West and the M3 and M20 to the south coast.

TRAVEL BY SEA

Car and passenger ferry services link several ports around the UK with northern and southern Europe.

The South coast seaports are particularly accessible with train services running into central London.

THIS IS YOUR TIME

Make it count.

Join a talented, global learning community filled with ambitious, inquisitive people – just like you.

Northumbria is the place to study courses shaped by world-leading research and created in consultation with students, employers and professionals, statutory and regulatory bodies. Here, you'll learn to question, analyse, challenge, innovate, and make an impact.

"This is your opportunity to develop personally and professionally, transforming who you are, what you do and how you do it, in the best research-rich learning environment."

Professor Tom Lawson | Deputy Vice-Chancellor

We play to your strengths.

At Northumbria, everything we do is about you. We're connected, so you'll get the chance to work with global companies, expand your horizons, stretch your knowledge, and build your CV.

Our inspirational academics will equip you with everything you need to fulfil your potential – professionally and personally. Your learning experience will be tailored to ensure you're ready for life beyond graduation – for a future yet to be explored.





Northumbria has a long and successful relationship with a number of professional and statutory bodies accrediting a range of our courses.

Studying a course with accreditation strengthens your employability and may provide a license to work in a particular discipline or specialist area.

Working with over 60 Professional, Statutory, and Regulatory Bodies, over 400 of our courses are accredited and are subject to stringent compliance processes such as annual review and monitoring, inspection, and periodic reaccreditation. This ensures course curriculum is compliant and up to date with professional standards.

Academic staff hold professional registrations where required and are subject to annual registration requirements.





SUPERCHARGE YOUR CV

To build that perfect CV, you need to get hands-on experience.

Working on projects or choosing an Advanced Practice programme will build upon your skills and make your CV stand out to future employers.

An Advanced Practice programme will allow you to get workplace ready, test your knowledge and skills, and gain invaluable work experience.



At the heart of our network is the Careers and Employment Service supported by our JobsOnline website which provides access to information about job vacancies and routes to apply.

In addition, you can take advantage of our integrated programme for careers, employability and development of leadership and management skills.

Our programmes blend academic theory with expert practitioners, teaching you not only the foundation tools and skills of your chosen

subject, but also how to apply them to your existing or desired position.

Many of our postgraduate courses offer an Advanced Practice option, where you will have the opportunity to put your learning into practice in a 12-15 week internship or a research study project in your second year.

By the time you graduate, you'll really know what it takes to succeed in the workplace: to respond to a brief, develop innovative solutions and present yourself with confidence.

"I chose to study at Northumbria University London, because I wanted more of a focused route of study for my postgraduate degree. My experience here has been so positive and studying MSc Digital Marketing with Advanced Practice is the best step to make myself career ready."

Hannah Hussain | MSc Digital Marketing with Advanced Practice



CAREERS AND EMPLOYMENT



Throughout your time at Northumbria, our Careers and Employability Team will work with you to help you get that job, start your own business, or apply for further study.

This service includes:

- Careers guidance
- Advice on CVs, applications and portfolios
- Better use of LinkedIn
- Enterprise skills workshops and events

All of this will maximise your opportunities when you graduate.

Get ahead with tools for success

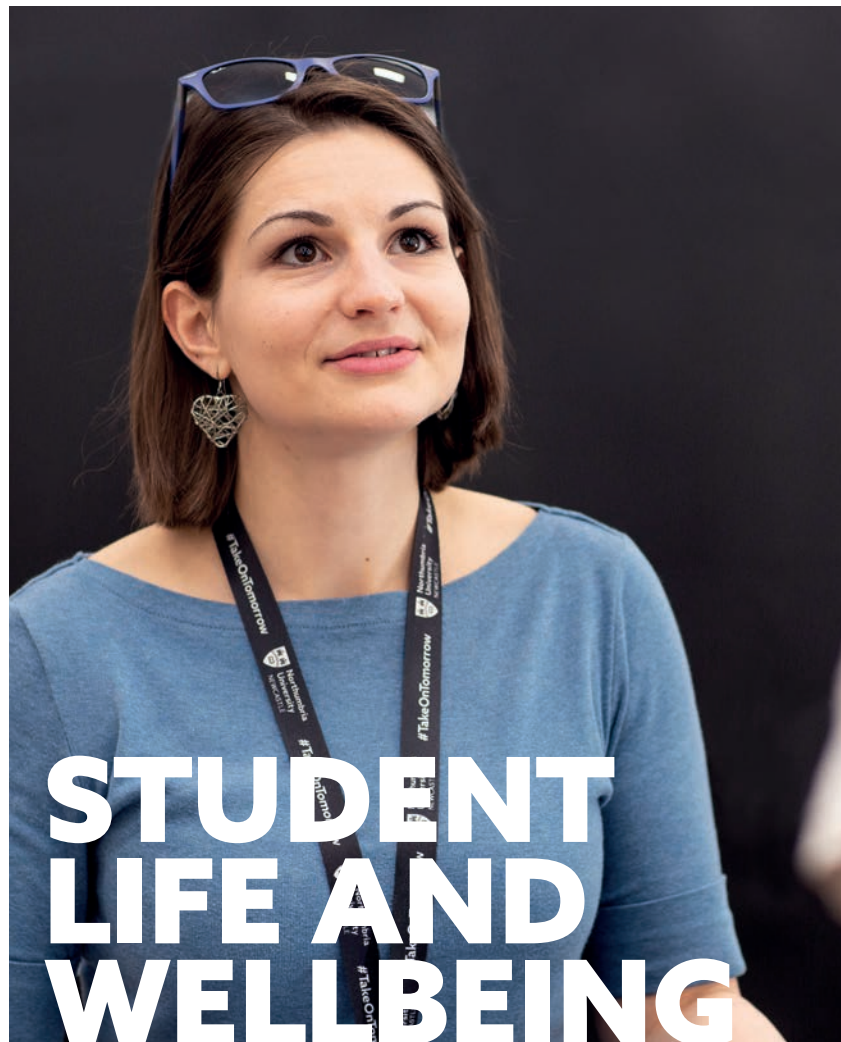
Use the interactive resources in Careers Online, your employability hub, to help you explore your career options, research employers and write effective applications.

Find job opportunities

Employers targeting Northumbria students and graduates advertise vacancies on JobsOnline. You'll get exclusive access to all of these, including graduate jobs, student and graduate internships, part-time work, volunteering and work experience opportunities.

"The Careers and Employment Service are an excellent bunch of staff who really care about your development and expanding your knowledge. There's a genuine focus on graduate employment and ensuring the best for your future."

Student Feedback from the National Student Survey



"Receiving support from Student Life and Wellbeing throughout my time at Northumbria has had a very positive impact on my self-esteem and the way I approach my studies. I consider it one of the most valuable things I've done throughout my time at university, and will take it with me through the rest of my life."

Undergraduate student of Northumbria University

Our Student Life and Wellbeing service is always on hand to support you throughout your student journey.

Before you apply, our specialist advisors are here to explain your funding options, including information on scholarships, loans and grants. They can also advise you on how to apply for extra support, such as childcare.

If you have a disability, we can explain how you can be assessed for support, so that any help you need can be put in place as early as possible. This support will continue throughout your studies and we can provide you with tailored advice on any disability or specific learning difficulty, such as dyslexia.

If you're an international student, we offer immigration and visa advice together with information on working in the UK.

This service includes:

- Financial support
- International student support
- Student accessibility and inclusion support
- Counselling and mental health support
- Welfare and health support

MONEY MATTERS

Financial support for UK students

Undergraduate Tuition Fee Loans

Tuition fee loans pay for your course and all undergraduate students are eligible for a loan to cover the cost of these fees, regardless of your household income. The money is paid directly to the university and you aren't required to start repaying the loan until you earn over the threshold amount.

For more information please visit:
gov.uk/student-finance

Government Loan for Postgraduate study

UK students are now able to apply for a £10,000+ postgraduate loan. The loan can be used to pay your course fees and help with living expenses.

You are able to split your loan across the duration of your course if your course lasts more than one year.

For more information please visit:
gov.uk/postgraduateloan

Instalment plan

For self-financing students studying our part-time postgraduate programmes, we are happy to offer an interest-free payment plan, allowing you to spread the cost of your course over 24 months.

For more information please visit:
london.northumbria.ac.uk/fees

Alumni Discount

If you are a graduate (both UK or international) of Northumbria University you will automatically receive a 20% discount on the annual tuition fees of most postgraduate courses.

Full terms and conditions, including exempt courses or modes of delivery, are available at:
northumbria.ac.uk/alumni

Budget calculator

Use our free tool to understand how to manage your money.

For more information please visit:
london.northumbria.ac.uk/student-budget-calculator

Financial support for International students

Bursaries and scholarships

The Northumbria University Bursary and Scholarship packages will provide financial help to a wide range of students, including rewarding high-achieving students and supporting those with an 'overseas' fee status.

All Scholarships and Bursaries awarded by the University are support that does not need to be paid back.

What is a bursary?

Northumbria University Bursaries are an automatic contribution towards the total cost of your tuition fees. The amount you get will depend on criteria such as income, background and personal circumstances, and in some cases geographical area.

For more information please visit:
london.northumbria.ac.uk/scholarships-bursaries

What is a scholarship?

Scholarships are contributions towards tuition fees that are awarded to high-achieving students. It is non-repayable and will certainly help with your day-to-day finances.

For more information please visit:
london.northumbria.ac.uk/scholarships

Instalment plan

For self-financing international applicants studying our full-time postgraduate programmes, we are happy to offer the option of spreading the cost of your course over three months interest-free.

For more information please visit:
london.northumbria.ac.uk/fees

Cost of living

We have put together some helpful information and support about the cost of living, to help our students make their money go further.

For more information please visit:
london.northumbria.ac.uk/cost-of-living



IT STARTS HERE



You'll be part of a vibrant learning community engaging in lectures, seminars, workshops and experiential study. You'll help to shape your learning by choosing modules, projects and a dissertation topic to take you exactly where you want to be in your career.

Pre-Sessional

Ideal for those who wish to improve their English language and academic skills as well as reading, writing, listening and speaking. It is also a great introduction to the UK and British culture.

Undergraduate Top-Up degrees

Our undergraduate degrees offer flexible entry points to suit your needs. Join directly on levels 4, 5 or 6, depending on your English language level and academic qualifications.

Pre-Master's

A great way to develop subject knowledge and prepare students for Master's-level study. These programmes aim to support academic development and introduce you to university life.

Postgraduate

An ideal way to continue education, support career progression and develop subject knowledge and confidence. Postgraduate degrees are designed with employability in mind and provide the chance to grow experience - putting students ahead of the competition.



The following pages list the courses we have to offer, how to apply, and some of your finance options.

Once you know which course you are interested in, how do you know what you need to achieve to get here? On every course page we've highlighted the entry points we would typically ask for. These requirements are provided as a guide to our standard offer levels and we may take into account alternative equivalent qualifications.

At Northumbria, we have a flexible and inclusive approach to assessing potential candidates. We know there are many different qualifications, skills and experiences which can all contribute to your application.

We make an offer based on the individual and our published entry requirements are typical of our standard offer, so just think of them as a guideline.

Feel free to get in touch to talk to us about any queries that you may have. A member of our dedicated recruitment team will be happy to help.

Pre-Sessional	p38
Undergraduate Top-Up	p42
Pre-Master's	p68
Postgraduate	p74

PRE-SESSIONAL ENGLISH AND STUDY SKILLS



Our Pre-Sessional English programme is designed to build your English language abilities ready for undergraduate or postgraduate study.

The programme teaches you the language and other academic skills necessary for you to gain the maximum benefit from your future academic course.

You will develop academic English skills via a content-based approach to learning as well as the ideas and concepts necessary to participate in the global academic community.

- Improve your academic study skills, as well as your reading, writing, listening and speaking skills
- Introduce yourself to life in the UK and British culture
- Develop your understanding of university systems, services and facilities

Duration	6 weeks	12 weeks
Tuition fee	£1,625	£3,250
Start dates	July, November, March	June, October, February
Assessment method	Coursework and final exam	
Delivery method	Full-time classroom based - 16 hours of seminars and lectures + 3 hours of tutorials, per week.	
Teaching methods	Lectures, tutorials and workshops with additional independent study	
Entry requirements	Relevant target degree admissions requirements apply and must be over 18 years old.	
English language requirements	IELTS scores are no more than 0.5 below your programme's English language entry requirements.	IELTS scores are no more than 1.0 below your programme's English language entry requirements.

How will I be taught and assessed?

A particular emphasis is placed on reading and writing academic English and you will be supported in producing an extended essay as part of your assessment. You will also work in teams to engage in research projects and present your findings orally.

You will be assigned your own personal guidance tutor who will provide academic and pastoral support.



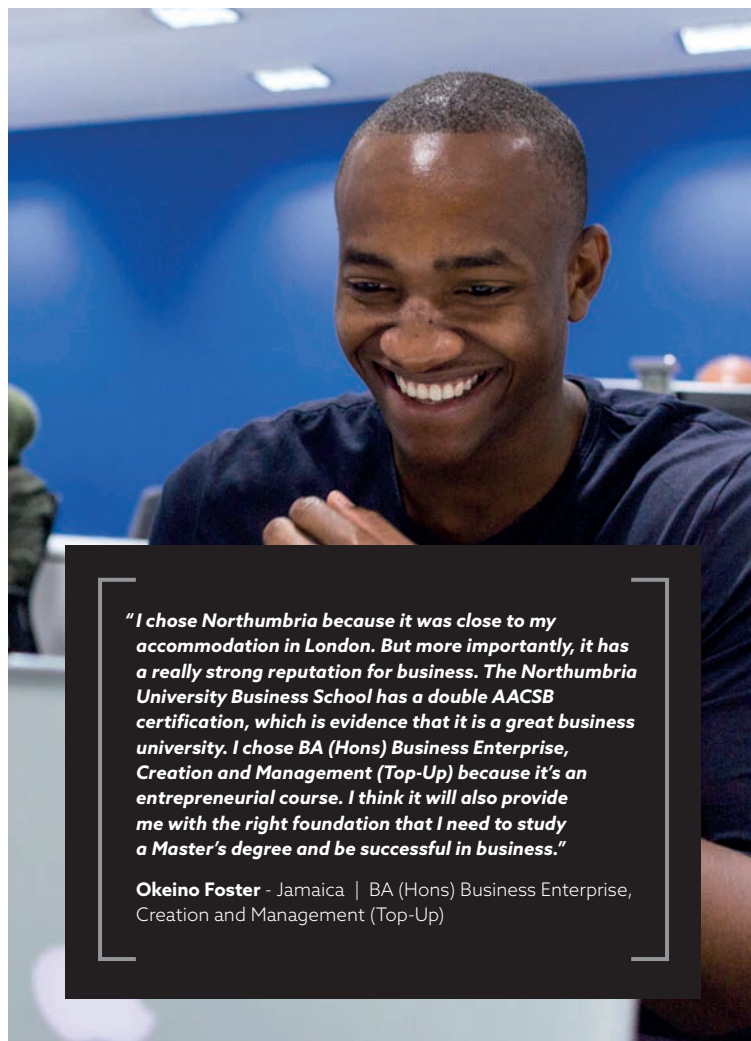
Careers and further study

Progression on to your chosen academic course depends on a mix of continuous assessment and an end-of-semester examination (not IELTS).

Example modules:

- Listening and Speaking
- Reading Skills
- Writing Skills
- Researching Life in Britain
- Social English

All modules are core and 0 credits unless otherwise stated.



UNDERGRADUATE TOP-UP DEGREES



There are lots of different routes into higher education, each depending on the qualifications you hold, and at which level.

Prepare for your undergraduate degree with the additional support of the International Year One, or top up your existing qualification to gain a full honours degree in one or two years.

- Flexible entry points to suit your needs - join directly on levels 4, 5 or 6
- Multiple start dates through the year

International Year One Business	p44
BSc (Hons) Business Enterprise and Innovation Management (Top-Up)	p46
BSc (Hons) Accounting and Finance (Top-Up)	p48
BSc (Hons) Global Business Management including:	p50
<ul style="list-style-type: none"> • Human Resources • Logistics and Supply Chain • Marketing 	
BSc (Hons) International Banking and Finance (Top-Up)	p54
BSc (Hons) International Tourism, Hospitality and Events (Top-Up)	p56
BSc (Hons) Computing with Artificial Intelligence Technology	p58
BSc (Hons) Computing with Cyber Security Technology	p60

BSc (Hons) Computing with Data Science and Big Data Technology p62

BSc (Hons) Computing with Information Technology Management p64

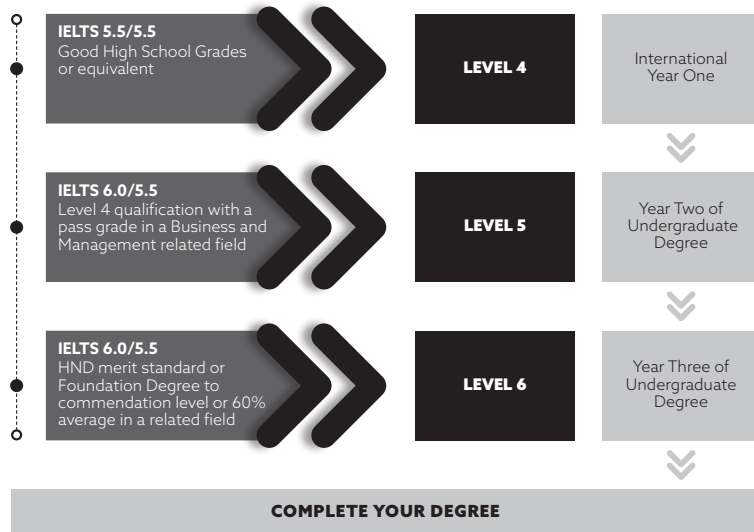
BSc (Hons) Computing with Technology p66

Progression options for Top-Up degrees

We offer a range of industry-focused postgraduate degrees designed with employability in mind, each developing the key skills and expertise that employers look for when hiring new recruits.

Find out more:
london.northumbria.ac.uk/pg

International Year One in Business



Our International Year One in Business is specifically designed to help international students develop academic and English language skills, so they are ready to progress onto the second year of an undergraduate business degree.

This programme is perfect for you if you wish to study one of the many Northumbria University London undergraduate business degrees, but you require additional support to gain direct entry.

This course is the equivalent of the first year of an undergraduate degree, allowing you to get the additional support that you need while still finishing your degree in three years.

For more information visit our course page at:
London.northumbria.ac.uk/IY1

Entry level	Level 4
Duration	9 months
Tuition fee	International: £16,750
Start dates	September, January
Assessment method	Coursework and exams
Delivery method	Full-time classroom based
Teaching methods	Lectures, tutorials and workshops with additional independent study
Entry requirements	Good High School Grades, or equivalent
English language requirements	IELTS 5.5 with no single element below 5.5, or equivalent Internal English language test is also accepted.

Further study

Upon successful completion and subject to specific entry requirements, you will join the second year of a business undergraduate degree at Northumbria University London, choosing from the following BSc (Hons) options:

- Business Enterprise and Innovation Management **p46**
- Accounting and Finance **p48**
- Global Business Management and specialisms **p50**
- International Banking and Finance **p54**
- International Tourism, Hospitality and Events **p56**

Example modules:

- Introducing Marketing
- Business Interaction with Society and the Economy
- Managing People in Organisations
- Financial Information for Decision Making
- Analysis for Business Decision Making
- Academic Business Skills

All modules are core and 20 credits unless otherwise stated.

BSc (Hons) Business Enterprise and Innovation Management (Top-Up)



Our world is constantly being reshaped by the innovating entrepreneur, from cutting-edge technological advancements to life saving social innovations.

Entrepreneurship and innovation are at the core of the 4th industrial revolution, and now with the UK ranked 4th in the Global Innovation Index 2021, continuous innovation – both incremental and radical – is increasingly seen as essential to maintain competitive advantage and a prosperous economy.

As such studying these closely related subjects will give you a real insight into the way they are becoming increasingly critical to business and enterprise success.

Key features

- Develop your skills required to set up and manage your own business or work within an SME across a range of sectors.
- Learn to use various IT tools such as Excel and SPSS.
- Newcastle Business School is part of a select group of business schools worldwide, following accreditation by the Association to Advance Collegiate Schools of Business (AACSB) in business and accounting – the first in Europe to gain the double accreditation.

	Level 5 (Year 2)	Level 6 (Year 3)
Duration	2 years	1 year
Tuition fee	UK: £9,250 (per annum) International: £19,750 (per annum)	
Start dates	January, May, September	
Assessment method	Coursework and projects	
Delivery method	Full time classroom	
Teaching methods	Lectures, tutorials and workshops with additional independent study	
Entry requirements	Level 4 qualification with a pass grade in a business and management-related field	BTEC HND/Foundation Degree or equivalent in a business and management related field
English language requirements	IELTS 6.0 with no element less than 5.5 (or approved equivalent)	

Careers and further study

Examples of roles graduates could progress onto include:

- Innovation consultant
- Design engineer
- Product designer

If you pass with a minimum of a 2:2 and would like to continue your studies, you may be eligible to progress on to one of our postgraduate business degrees and specialise in either:

- Business Analytics
- Entrepreneurship
- Hospitality and Tourism Management

- Human Resource Management
- Financial Management or Marketing Management as part of your Business Masters

Example modules:

Level 5

- Management Research and Analysis
- Innovation Consultancy Project
- Innovation in Practice

Level 6

- Design for Innovation
- Contemporary Business Enquiry
- Leadership and Management in Practice

BSc (Hons) Accounting and Finance (Top-Up)



The BSc (Hons) Accounting and Finance (Top-Up) programme will help you build all-round business knowledge, with additional expertise in accounting and finance as well as transferable professional and managerial techniques. The course provides excellent preparation for a career in finance, banking, government, and general business leadership.

Key features

- The Newcastle Business School is part of a select group of business schools worldwide, following accreditation by the Association to Advance Collegiate Schools of Business (AACSB) in business and accounting – the first in Europe to gain the double accreditation
- Learn about contemporary issues in accounting and finance
- Boost your personal and career progression with employability-focused modules

Careers and further study

Graduates of this programme are well placed to progress into accounting and finance roles, including training contracts with leading accounting practices. Typical roles include:

- Consulting Financial Analyst
- Bank Branch Manager
- Banking Analyst
- Global Commodity Manager
- Asset Liability Manager

Graduates of this programme may also pursue postgraduate studies in Accounting and Finance and related fields.

	Level 5 (Year 2)	Level 6 (Year 3)
Duration	2 years	1 year
Tuition fee	UK: £9,250 (per annum) International: £19,750 (per annum)	
Start dates	September, January	
Assessment method	Coursework only	
Delivery method	Full-time classroom based	
Teaching methods	Lectures, tutorials and workshops with additional independent study	
Entry requirements	Level 4 qualification with a pass grade in a business and management-related field	BTEC HND/Foundation Degree or equivalent in a related subject
English language requirements	IELTS 6.0 with no element less than 5.5 (or approved equivalent). Internal English language test is also accepted.	

Example modules:

- Digital Business Models, Marketing and Operations
- Decision Making in the Financial Environment
- Contemporary Business Enquiry
- Contemporary Corporate Reporting
- International Finance and Responsible Management

All modules are core and 20 credits unless otherwise stated. Please note, study modules may vary depending on the entry year.

Final project options:

- Consultancy Project - work with a real client who have identified a business problem requiring a solution
- Management Dissertation - in-depth, independent academic research project

Depending on your qualifications and English language level, you can start this course in Year 1, 2 or 3. If you would need to start in Year 1, please also see **page 44**.

BSc (Hons) Global Business Management (Top-Up)



This programme will develop your knowledge, understanding, application and critical evaluation of key subjects related to global business management.

The internationalised curriculum will boost your awareness of the globally diverse environment in which modern businesses and management operate, preparing you for a career in the UK or around the world. We also offer the opportunity to specialise in HR, Logistics or Marketing.



Key features

- Explore the theory and practice of responsible business and management in an international context
- Learn how to effectively communicate with diverse audiences through a range of formats and media
- Boost your personal and career progression with employability-focused modules
- Specialised options available

	Level 5 (Year 2)	Level 6 (Year 3)
Duration	2 years	1 year
Tuition fee	UK: £9,250 (per annum) International: £19,750 (per annum)	
Start dates	September, January	
Assessment method	Coursework only	
Delivery method	Full-time classroom based	
Teaching methods	Lectures, tutorials and workshops with additional independent study	
Entry requirements	Level 4 qualification with a pass grade in a business and management-related field	BTEC HND/Foundation Degree or equivalent
English language requirements	IELTS 6.0 with no element less than 5.5 (or approved equivalent). Internal English language test is also accepted.	

Final project options:

- Consultancy Project - work with a real client who have identified a business problem requiring a solution
- Management Dissertation - in-depth, independent academic research project
- Management Enquiry - independent investigation into an applied business problem or issue

Careers and further study

Graduates of this programme are well placed to progress into successful business and management roles. Typical roles include:

- International Operations Manager
- International Project Manager
- Business Manager
- Global Business Analyst
- International Business Developer

Graduates of this programme will also be ready to specialise further through postgraduate studies.

Depending on your qualifications and English language level, you can start this course in Year 1, 2 or 3. If you would need to start in Year 1, please also see **page 44**.

Global Business Management Programmes

These programmes develop your knowledge, understanding, application and evaluation of subjects related to global business management.

The following information shows additional example modules specific to each programme.

BSc (Hons) Global Business Management:

- Human Resource Management Essentials
- Communications and Content Marketing
- Management Research and Analysis
- Contemporary Business Enquiry

Careers and further study

Graduates of this programme are well placed to progress into successful business and management roles. Typical roles include:

- International Operations Manager
- International Project Manager
- Business Manager
- Global Business Analyst
- International Business Developer

BSc (Hons) Global Business Management (Human Resources):

- Resourcing and Development for Diversity
- Critical HRD (Human Resource Development)

Careers and further study

Graduates of this programme are well placed to progress into successful business and human resources roles. Typical roles include:

- Human Resources Manager
- HR Advisor
- People Consultant
- Head of Operations
- Employee Relations Specialist
- Recruitment Manager
- Head of Human Resources

*All modules are core and 20 credits unless otherwise stated.
Please note, study modules may vary depending on the entry year.*



BSc (Hons) Global Business Management (Logistics and Supply Chain):

- Applied Logistics and Supply Chain Management
- International Operations Management

Careers and further study

Graduates of this programme are well placed to progress into successful logistics and supply chain roles. Typical roles include:

- Fulfilment Operations Manager
- Supply Chain Business Managers
- Supply Quality Manager
- E-commerce Operations Manager
- Freight Account Manager
- Global Distribution Manager

BSc (Hons) Global Business Management (Marketing):

- Market Research and Planning
- Responsible Marketing Strategy

Careers and further study

Graduates of this programme are well placed to progress into successful marketing roles. Typical roles include:

- Marketing Manager
- Business Development Manager
- Head of Marketing
- Content Marketing Manager
- Regional Sales Manager

BSc (Hons) International Banking and Finance (Top-Up)



This programme will equip you with the skills and knowledge to help you join the banking and finance industry. You will gain first-hand experience of the financial market, learning from real-time data.

Key features

- Learn about financial markets and contemporary issues in the international business environment
- Boost your personal and career progression with employability and academic-focused modules
- Gain first-hand experience of current market developments
- Study at an Association to Advance Collegiate Schools of Business (AACSB) accredited business school

Careers and further study

Graduates of this programme are well placed to progress into the banking and finance industry in areas such as financial advisory and international banking. Typical roles include:

- Finance Manager
- Business Banker
- Banking Operations Specialist
- Corporate Audit Manager
- Stock Trader
- Financial Controller

Graduates of this programme may also pursue postgraduate studies.

	Level 5 (Year 2)	Level 6 (Year 3)
Duration	2 years	1 year
Tuition fee	UK: £9,250 (per annum) International: £19,750 (per annum)	
Start dates	September, January	
Assessment method	Coursework only	
Delivery method	Full-time classroom based	
Teaching methods	Lectures, tutorials and workshops with additional independent study	
Entry requirements	Level 4 qualification with a pass grade in a business and management-related field	BTEC HND/Foundation Degree or equivalent in a related subject
English language requirements	IELTS 6.0 with no element less than 5.5 (or approved equivalent). Internal English language test is also accepted. GCSE English Grade C or above.	

Example modules:

- Financial Markets and Institutions
- Digital Business Models, Marketing and Operations
- Decision Making in the Financial Environment
- International Finance, Trade, and the Banking Sector
- Responsible Strategy
- Risk in Financial Services I and II
- International Finance and Responsible Management

All modules are core and 20 credits unless otherwise stated. Please note, study modules may vary depending on the entry year.

Final project options:

- Consultancy Project - work with a real client who have identified a business problem requiring a solution
- Management Dissertation - in-depth, independent academic research project
- Management Enquiry - independent investigation into an applied business problem or issue

Depending on your qualifications and English language level, you can start this course in Year 1, 2 or 3. If you would need to start in Year 1, please also see **page 44**.

BSc (Hons) International Tourism, Hospitality and Events (Top-Up)



This programme is for those who aspire to enter the exciting world of international tourism. Through an academically engaging, industry-relevant and stimulating range of modules, you will develop an understanding of the changing nature of this global industry.

Key features

- Learn the theory and practice of tourism, hospitality and events management in an international context
- Develop an understanding of the changing nature of this global industry
- Boost your personal and career progression with employability-focused modules
- Investigate how to implement sustainable tourism solutions and how tourism can adapt to challenges of an ageing population

Careers and further study

Graduates of this programme are well placed to progress into roles within the tourism and hospitality and events industry, either in the UK or worldwide. Typical roles include:

- Hospitality Manager
- Events Manager
- Special Events Planner

Graduates of this programme may also pursue postgraduate studies.

	Level 5 (Year 2)	Level 6 (Year 3)
Duration	2 years	1 year
Tuition fee	UK: £9,250 (per annum) International: £19,750 (per annum)	
Start dates	September, January	
Assessment method	Coursework only	
Delivery method	Full-time classroom based	
Teaching methods	Lectures, tutorials and workshops with additional independent study	
Entry requirements	Level 4 qualification with a pass grade in a business and management-related field	BTEC HND/Foundation Degree or equivalent in a related subject
English language requirements	IELTS 6.0 with no element less than 5.5 (or approved equivalent). Internal English language test is also accepted. GCSE maths grade C or above.	

Example modules:

- Digital Business Models, Marketing and Operations
- Strategic Frameworks and Cultural Contexts in International Management
- Events Design, Planning and Production
- International Hospitality Operations Management
- Innovation and Creativity in THE
- Global Challenges and Tourism Futures

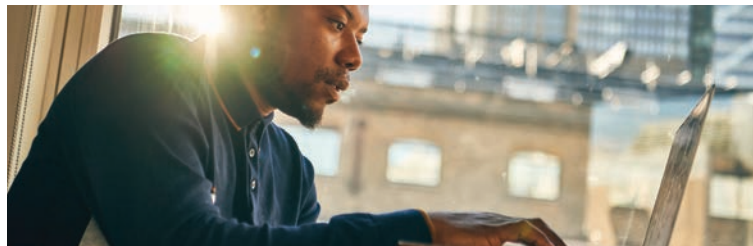
All modules are core and 20 credits unless otherwise stated. Please note, study modules may vary depending on the entry year.

Final project options:

- Consultancy Project - work with a real client who have identified a business problem requiring a solution
- Management Dissertation - in-depth, independent academic research project
- Management Enquiry - independent investigation into an applied business problem or issue

Depending on your qualifications and English language level, you can start this course in Year 1, 2 or 3. If you would need to start in Year 1, please also see **page 44**.

BSc (Hons) Computing with Artificial Intelligence Technology



This programme will provide you with a recognised undergraduate qualification combining a range of computing subject areas with AI Technology. You will be exposed to the in-depth concepts, principles, technologies, and techniques to train and deploy distributed machine learning models using cloud-based platforms such as Google Cloud or AWS.

Key features

- Learn AI Programming, develop understanding of IoT peripherals, IoT data analytics and how to incorporate local machine learning (ML).
- Deploy ML models using platforms such as Google Cloud or AWS.
- Satisfy the educational requirements of the BCS, The Chartered Institute for IT for professional membership.

Careers and further study

The programme will develop your skills and competencies for careers in a range of job roles, such as:

- Software Engineer
- Database Developer
- AI Data Analyst
- AI Engineer
- Machine Learning Engineer

Example modules:

- Programming for AI
- Machine Learning on Cloud

All modules are core and 20 credits unless otherwise stated. Please note, study modules may vary depending on the entry year.

	Level 5	Level 6
Duration	2 years	1 year
Tuition fee	UK: £9,250 (per annum) International: £19,750 (per annum)	
Start dates	September, January	
Assessment method	Coursework and exams	
Delivery method	Full-time classroom based	
Teaching methods	Lectures, tutorials and workshops with additional independent study	
Entry requirements	HNC or equivalent Level 4 qualification in a computing or IT subject area.	HND or Foundation Degree in a computing or IT related field.
English language requirements	IELTS minimum score of 6.0 with 5.5 in each component (or approved equivalent).	

Year two module options:

- **Internship (optional)** - A semester internship enhances your employability prospects.
- **Group Consultancy Project (optional)** - Develop hands-on experience of working on a real-life project.
- **Professional Practice (optional)** - Embark on relevant technical training delivered in class, online learning, a mini project, or another appropriate form approved by the academic team.

Final year UG Project (40 credits):

In this year-long module, you will have the opportunity to work independently to research and build a significant computing solution directly related to your specialist programme of study.

- Apply a wide range of development skills to your product development.
- Gain practical experience of all aspects of the development life cycle.
- Examine wider legal, ethical, social and professional implications.

Depending on your qualifications and English language level, you can start this course in Year 1, 2 or 3. If you would need to start in Year 1, please also see **page 44**.

BSc (Hons) Computing with Cyber Security Technology



The UK Government Cyber Security Strategy 2022-2030 highlights the need for developing cyber security skills to meet the skills shortage in cyber domain. This programme aims to develop your knowledge and skills set in information governance, information assurance, cyber security risk management and more.

Key features

- Learn about challenges related to digital forensics, legal frameworks, the forensics investigation process.
- Explore methodologies used by hackers and systematic process of hacking phases.
- Satisfy the educational requirements of the BCS, The Chartered Institute for IT for professional membership.

Careers and further study

The programme will develop your skills and competencies for careers in a range of job roles, such as:

- Penetration Tester
- Security Analyst
- Cyber Security Consultant
- Cyber Defence Analyst

Example modules:

- Digital Forensics
- Cyber Security Governance and Assurance

All modules are core and 20 credits unless otherwise stated. Please note, study modules may vary depending on the entry year.

	Level 5	Level 6
Duration	2 years	1 year
Tuition fee	UK: £9,250 (per annum) International: £19,750 (per annum)	
Start dates	September, January	
Assessment method	Coursework and exams	
Delivery method	Full-time classroom based	
Teaching methods	Lectures, tutorials and workshops with additional independent study	
Entry requirements	HNC or equivalent Level 4 qualification in a computing or IT subject area.	HND or Foundation Degree in a computing or IT related field.
English language requirements	IELTS minimum score of 6.0 with 5.5 in each component (or approved equivalent).	

Year two module options:

- **Internship (optional)** - A semester internship enhances your employability prospects.
- **Group Consultancy Project (optional)** - Develop hands-on experience of working on a real-life project.
- **Professional Practice (optional)** - Embark on relevant technical training delivered in class, online learning, a mini project, or another appropriate form approved by the academic team.

Final year UG Project (40 credits):

In this year-long module, you will have the opportunity to work independently to research and build a significant computing solution directly related to your specialist programme of study.

- Apply a wide range of development skills to your product development.
- Gain practical experience of all aspects of the development life cycle.
- Examine wider legal, ethical, social and professional implications.

Depending on your qualifications and English language level, you can start this course in Year 1, 2 or 3. If you would need to start in Year 1, please also see **page 44**.

BSc (Hons) Computing with Data Science and Big Data Technology



According to UK National Data Strategy (Department for Digital, 2020) there is a need for those with qualifications and skills in Data Science technology. This programme can prepare you for a range of careers in Big Data and Data Science including technical, management, and leadership opportunities in this discipline.

Key features

- Learn to develop and test various data science applications for business intelligence.
- Learn to programme with SQL, MySQL, Python, R language or similar and deploy distributed machine learning models using Google Cloud, Microsoft Azure or AWS.
- Satisfy the educational requirements of the BCS, The Chartered Institute for IT for professional membership.

Careers and further study

The programme will develop your skills and competencies for careers in a range of job roles, such as:

- Data Scientist
- Data Engineer
- Machine Learning Engineer

Example modules:

- Data Science and Data Analytics
- Machine Learning on Cloud

All modules are core and 20 credits unless otherwise stated. Please note, study modules may vary depending on the entry year.

	Level 5	Level 6
Duration	2 years	1 year
Tuition fee	UK: £9,250 (per annum) International: £19,750 (per annum)	
Start dates	September, January	
Assessment method	Coursework and exams	
Delivery method	Full-time classroom based	
Teaching methods	Lectures, tutorials and workshops with additional independent study	
Entry requirements	HNC or equivalent Level 4 qualification in a computing or IT subject area.	HND or Foundation Degree in a computing or IT related field.
English language requirements	IELTS minimum score of 6.0 with 5.5 in each component (or approved equivalent).	

Year two module options:

- **Internship (optional)** - A semester internship enhances your employability prospects.
- **Group Consultancy Project (optional)** - Develop hands-on experience of working on a real-life project.
- **Professional Practice (optional)** - Embark on relevant technical training delivered in class, online learning, a mini project, or another appropriate form approved by the academic team.

Final year UG Project (40 credits):

In this year-long module, you will have the opportunity to work independently to research and build a significant computing solution directly related to your specialist programme of study.

- Apply a wide range of development skills to your product development.
- Gain practical experience of all aspects of the development life cycle.
- Examine wider legal, ethical, social and professional implications.

Depending on your qualifications and English language level, you can start this course in Year 1, 2 or 3. If you would need to start in Year 1, please also see **page 44**.

BSc (Hons) Computing with Information Technology Management



The UK Government Innovation design strategy 2020-2024 foresees long term benefits of human centred design to wider social and environment outcomes. This programme will provide you with a recognised undergraduate qualification in information management technologies and is designed for those who wish to study IT management.

Key features

- Develop a solid understanding of systems and processes in business context.
- Explore fundamental concepts of website design, cloud computing technologies and cyber security.
- Satisfy the educational requirements of the BCS, The Chartered Institute for IT for professional membership.

Careers and further study

The programme will develop your skills and competencies for careers in a range of job roles, such as:

- UX/UI Designer
- Application Designer
- Business Intelligence Analyst

Example modules:

- Cloud Computing Technologies
- Cyber Security

All modules are core and 20 credits unless otherwise stated. Please note, study modules may vary depending on the entry year.

	Level 5	Level 6
Duration	2 years	1 year
Tuition fee	UK: £9,250 (per annum) International: £19,750 (per annum)	
Start dates	September, January	
Assessment method	Coursework and exams	
Delivery method	Full-time classroom based	
Teaching methods	Lectures, tutorials and workshops with additional independent study	
Entry requirements	HNC or equivalent Level 4 qualification in a computing or IT subject area.	HND or Foundation Degree in a computing or IT related field.
English language requirements	IELTS minimum score of 6.0 with 5.5 in each component (or approved equivalent).	

Year two module options:

- **Internship (optional)** - A semester internship enhances your employability prospects.
- **Group Consultancy Project (optional)** - Develop hands-on experience of working on a real-life project.
- **Professional Practice (optional)** - Embark on relevant technical training delivered in class, online learning, a mini project, or another appropriate form approved by the academic team.

Final year UG Project (40 credits):

In this year-long module, you will have the opportunity to work independently to research and build a significant computing solution directly related to your specialist programme of study.

- Apply a wide range of development skills to your product development.
- Gain practical experience of all aspects of the development life cycle.
- Examine wider legal, ethical, social and professional implications.

Depending on your qualifications and English language level, you can start this course in Year 1, 2 or 3. If you would need to start in Year 1, please also see **page 44**.

BSc (Hons) Computing with Technology



With IT services playing an important part in meeting customer requirements, DevOps and Enterprise Architecture job roles remain highly in demand (HULME, 2021). This programme will help equip you with key knowledge and skills in cutting-edge computing technologies.

Key features

- Use and evaluate a variety of computing and technology systems software, tools and techniques.
- Plan and manage the development and use of computing and technology systems.
- Get on track for fulfilling the educational requirements of the BCS, The Chartered Institute for IT, to achieve professional membership.

Careers and further study

After graduating from this programme, you will be equipped to work in a variety of careers in the IT industry, or to progress to academic or research-orientated careers, such as:

- Enterprise Architect
- Network Analyst
- DevOps Engineer
- Business Analyst

Example modules:

- Advanced Computer Networks
- DevOps Principles
- Enterprise Architecture

All modules are core and 20 credits unless otherwise stated. Please note, study modules may vary depending on the entry year.

	Level 5	Level 6
Duration	2 years	1 year
Tuition fee	UK: £9,250 (per annum) International: £19,750 (per annum)	
Start dates	September, January	
Assessment method	Coursework and exams	
Delivery method	Full-time classroom based	
Teaching methods	Lectures, tutorials and workshops with additional independent study	
Entry requirements	HNC or equivalent Level 4 qualification in a computing or IT subject area.	HND or Foundation Degree in a computing or IT related field.
English language requirements	IELTS minimum score of 6.0 with 5.5 in each component (or approved equivalent).	

Year two module options:

- **Internship (optional)** - A semester internship enhances your employability prospects.
- **Group Consultancy Project (optional)** - Develop hands-on experience of working on a real-life project.
- **Professional Practice (optional)** - Embark on relevant technical training delivered in class, online learning, a mini project, or another appropriate form approved by the academic team.

Final year UG Project (40 credits):

In this year-long module, you will have the opportunity to work independently to research and build a significant computing solution directly related to your specialist programme of study.

- Apply a wide range of development skills to your product development.
- Gain practical experience of all aspects of the development life cycle.
- Examine wider legal, ethical, social and professional implications.

Depending on your qualifications and English language level, you can start this course in Year 1, 2 or 3. If you would need to start in Year 1, please also see **page 44**.

PRE - MASTER'S



If you are looking to gain the entry qualifications to study one of our postgraduate degrees, our Pre-Master's programmes have been specifically designed to help further develop your academic skills, subject knowledge and prepare you for Master's-level study.

If you have a minimum of a third class pass or ordinary degree from a UK university or equivalent, then you will be eligible to study one of our Pre-Master's programmes.

Progression options

Upon successful completion of the Graduate Certificate, subject to a minimum pass mark, you will be able to progress on to one of our full-time postgraduate degrees at either our London or Newcastle Campus. You will automatically receive a conditional offer to study with us on one of our postgraduate programmes.

Fast-track your career

Whether you're looking to fast-track your first steps on the career ladder, change your direction, or take your knowledge and skills to the next level, our postgraduate degrees provide you with the chance to expand your horizons and give your career the edge, whether you want to work for yourself or another organisation.

Change direction

Northumbria University London enables you to specialise in a variety of subject areas including computing and project management courses as well as a diverse list of 'Business with' programmes featuring finance, marketing, international and entrepreneurship specialities.

Industry experience

Another additional advantage of choosing to progress on to one of our postgraduate courses, is the opportunity to complete either an internship or a group consultancy/ research project by choosing to study the Advanced Practice option. This route involves extending your studies, providing you with an opportunity to gain real experience in a business environment to help you stand out from the crowd.

For more information on our Pre-Master's programmes please visit: london.northumbria.ac.uk/pre-masters

Graduate Certificate in Business



If you require additional academic support to study one of our Master's programmes, the Graduate Certificate in Business is designed to build your knowledge and skills to bridge this gap.

The Graduate Certificate in Business consists of two modules that will prepare you for the transition into our Master's programmes. These modules are designed to build your skills, knowledge and the confidence needed to study successfully at postgraduate level.

Duration	4 months/1 semester
Tuition fee	UK: £3,495 International: £6,750
Start dates	September, January, May
Assessment method	Coursework, presentation and exams
Delivery method	Full-time classroom based
Teaching methods	Lectures, tutorials and workshops with additional independent study
Entry requirements	Minimum of a third class pass or ordinary degree from a UK university or equivalent.*
English language requirements	IELTS 6.0 with no single element below 5.5. Internal English language test is also accepted.

How will I be taught and assessed?

Throughout the course, you will be expected to attend and engage in lectures and seminars to help you understand how to apply theory to practice. We use a range of materials and case studies to support your learning throughout the course.

Your assessments take place through coursework, presentation and exams.

Careers and further study

Studying the Graduate Certificate in Business is the ideal preparation for studying one of our Master's programmes at the London Campus. These programmes are heavily research-informed and designed in consultation with industry partners.

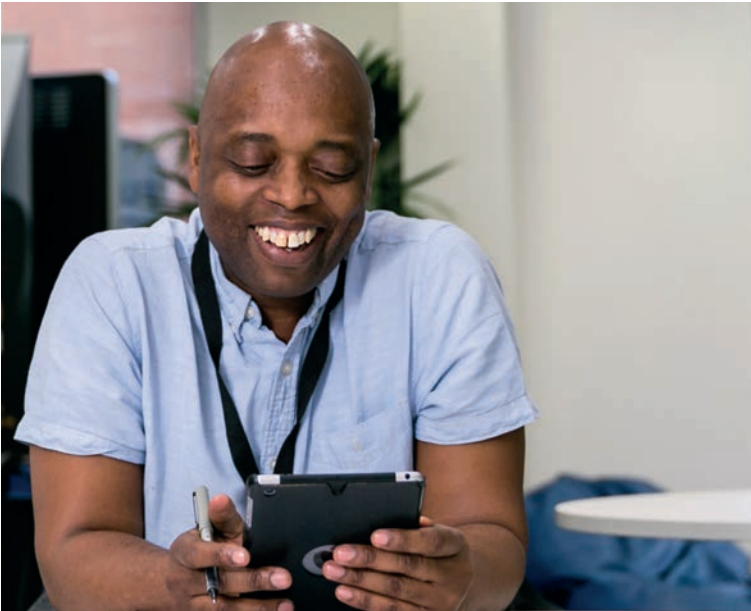
Example modules:

- Developing Academic Skills for Business and Management
- Business and Management in Context (40 credits)

All modules are core and 20 credits unless otherwise stated.

*For students from China, Da Zhuan Diploma is accepted

Graduate Certificate in Computing and Technology



If you require additional academic support to study one of our computing Master's programmes, the Graduate Certificate in Computing and Technology is designed to build your knowledge and skills to bridge this gap.

The Graduate Certificate in Computing and Technology aims to develop your knowledge and understanding of essential computing concepts and gain the academic skills required to think critically and to write academically. This will provide you with a unique opportunity to embark on postgraduate study.

Duration	4 months/1 semester
Tuition fee	UK: £3,495 International: £6,750
Start dates	September, January, May
Assessment method	Coursework
Delivery method	Full-time classroom based
Teaching methods	Lectures, tutorials and workshops with additional independent study
Entry requirements	Minimum of a third class pass or ordinary degree from a UK university or equivalent.
English language requirements	IELTS 6.0 with no single element below 5.5. Internal English language test is also accepted.

How will I be taught and assessed?

Throughout the course, you will be expected to attend and engage in lectures, seminars, tutorials and workshops to help you understand how to apply theory to practice. We use a range of materials and case studies to support your learning throughout the course. All modules will be assessed through written coursework.

Example modules:

- Academic Development for Postgraduate Studies
- Implementing and Managing IT Projects
- Computer Information Systems

All modules are core and 20 credits unless otherwise stated.

Careers and further study

On completing this programme, you will have achieved a number of the Northumbria graduate attributes and be in a position to meet the subject content entry requirement of Northumbria London Campus Master's programmes in computing.

POSTGRADUATE DEGREES



Whether you've just completed your undergraduate degree, are in the early stages of your career and want to take the next step, or you're currently juggling a career and family, this is your time. Use it wisely – develop your knowledge, pursue your interests, build your skills and career, and join a talented, global learning community filled with ambitious, inquisitive people – just like you.

Our inspirational academics will equip you with everything you need to fulfil your potential – professionally and personally. Ready for life beyond graduation – for a future yet to be explored.

Advanced Practice

If you are interested in studying a postgraduate degree in London you can choose between the standard course structure of two semesters of teaching followed by a dissertation or project, or you can choose to study an Advanced Practice programme.

See **pages 76 – 79** for more information.

Find out more:
**[london.northumbria.ac.uk/
advanced-practice](https://london.northumbria.ac.uk/advanced-practice)**

Professional Pathways

We want to make sure you have the professional skills to advance your career and believe that learning should be an ongoing process. Through our partner, QA Higher Education, each of our full-time London Campus Master's students may be eligible to undertake 3 short professional training courses through QA, on completion of your programme.

The Professional Pathways are available for eligible students at no extra cost. This gives you the opportunity to add further training which, depending on your course choice, can be worth more than £3,000, adding value to your CV and continuing to develop your skills from one of the UK's largest corporate training providers, QA.

Find out more:
**[london.northumbria.ac.uk/
professional-pathways](https://london.northumbria.ac.uk/professional-pathways)**

COMPUTING WITH ADVANCED PRACTICE

The Advanced Practice element of the programme allows you to extend your studies to include either an Internship (may be paid or unpaid), a Group Consultancy Project or a Research Project, enabling you to work on a business problem, developing valuable work experience and industry insight.

Fast-track your career

The programmes offer you an opportunity to stand out in interviews, allowing you to recall real examples of skills learnt when applying for future jobs. Whether it is attending meetings, gathering market research or analysing recent figures – contributing to an organisation and communicating with staff will give you experience beyond the classroom.

Course structure

This stage commences in your penultimate semester. If you start your programme in September, this will be after a summer break.

If you start your programme in January you will have a summer break between semester 1 and 2, and again between the Advanced Practice stage and final semester. If you start in May this will be straight after your second semester. You will work closely with our Employment and Placement Teams who will help you secure an internship of between 12 and 15 weeks, equivalent to a full-time position.

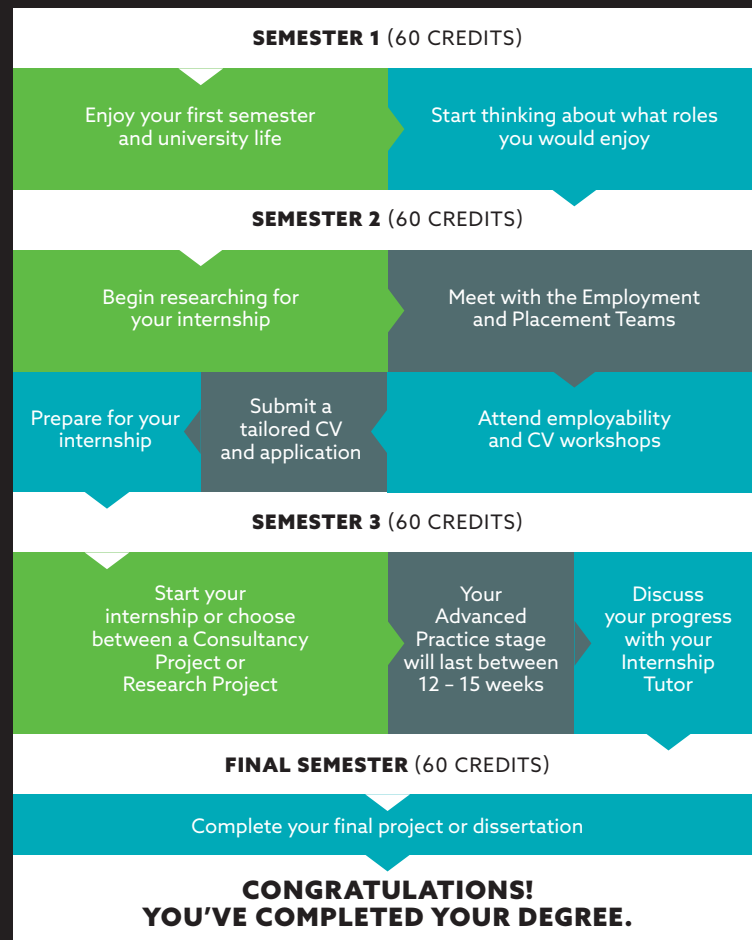
Advanced Practice fees*:

UK: £3,000

International: £3,000

For more information on the options available refer to your specific programme page, or our website: london.northumbria.ac.uk/advanced-practice

*This fee is in addition to the fees of your chosen course. However, the tuition fees on the respective course pages are inclusive of the additional fees for the Advanced Practice.



The above diagram represents the typical route to undertake an Internship. Consultancy Projects and Research Projects will differ - your tutor will guide you through this process.

BUSINESS WITH ADVANCED PRACTICE

Extend your studies to include either an **Internship (may be paid or unpaid)**, a **Group Consultancy Project**, **Enterprise Business Start Up**, or **Professional Skills Practice**, enabling you to work on a business problem, developing valuable work experience and industry insight.

Fast-track your career

The programmes offer you an opportunity to stand out in interviews, allowing you to recall real examples of skills learnt when applying for future jobs.

Course structure

The Business with specialisms Advanced Practice programme has 4 options of a Masters Internship, Consultancy Study, Enterprise Business Start Up and Professional Skills Practice. The Masters dissertation will be completed in the penultimate semester, before you

begin your Advanced Practice module in your final semester. You will work closely with our Employment and Placement Teams who will help you secure an internship of between 12 and 15 weeks. This will be equivalent to a full-time position.

This allows you to complete your studies and apply to your Advanced Practice module, before completing your degree.

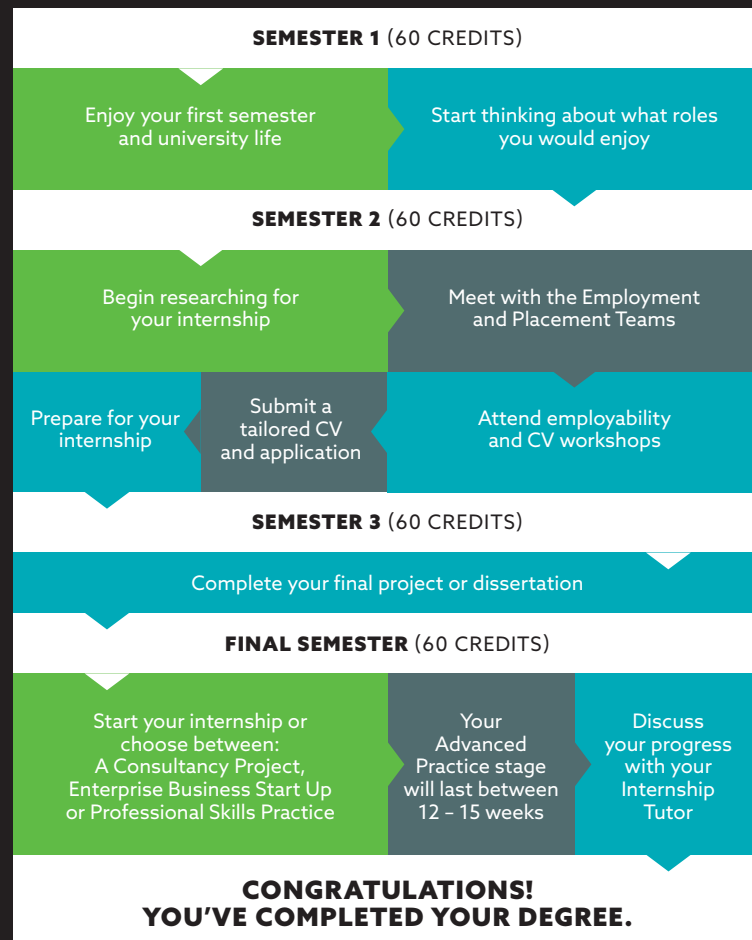
Advanced Practice fees*:

UK: £3,000

International: £3,000

For more information on the options available refer to your specific programme page, or our website: london.northumbria.ac.uk/advanced-practice

*This fee is in addition to the fees of your chosen course. However, the tuition fees on the respective course pages are inclusive of the additional fees for the Advanced Practice.



The above diagram represents the typical route to undertake an Internship. Consultancy Projects and Enterprise Business Start Up and Professional Skills Practice will differ - your tutor will guide you through this process.

MSc Artificial Intelligence Technology



MSc Artificial Intelligence Technology focuses on developing your abilities as a digital leader, capable of identifying and implementing technical solutions to deliver future improvements to your organisation.

This programme offers exposure to the theories and principles of testing software, using AI, exploring data analysis using IoT and deploying machine-learning models to critically analyse IT solutions.

Key features:

- Develop in-demand skills to work in a range of roles within the IT industry.
- Train and deploy distributed machine learning modules using cloud-based platforms such as Google Cloud, AWS, Microsoft Azure, or similar.
- Learn programming with R and how to incorporate local machine learning (ML) using Python Programming.

Careers and further study

This programme aims to accelerate your skills and competence in a range of job roles, including roles in leadership and management in IT as well as titles such as:

- Software Engineer
- Database Developer
- AI Data Analyst
- Information Security Professional
- Business Analyst
- AI Engineer
- Machine Learning Engineer
- Technologist – Artificial Intelligence

	Master's Programme	Advanced Practice
Duration	1 year	16 - 24 months
Tuition fee	UK: £9,960 International: £19,750	UK: £12,960 International: £22,750
Start dates	September, January, May	
Assessment method	Coursework	
Delivery method	Full-time classroom based	
Teaching methods	Lectures, seminars and tutorials with additional independent study	
Entry requirements	Minimum of a 2:2 honours degree or equivalent in any discipline. Professional qualifications may also be accepted.	
English language requirements	IELTS 6.5, with no single element below 5.5 or equivalent. Internal English language test is also accepted.	

Example modules:

- Information Governance and Cyber Security
- Leadership in a Digital Age
- Programming for AI
- Academic Language Skills for Computer and Information Sciences (0 credits)
- Research Methods for Professional Practice
- Artificial Intelligence for IoT
- Machine Learning on Cloud
- Computing and Digital Technologies Project (60 credits)

Advanced Practice stage

Students will choose one of the following modules:

- Consultancy Project (60 credits)
- Research Project (60 credits)
- Internship (60 credits)

All modules are core and 20 credits unless otherwise stated.

MSc Big Data and Data Science Technology



MSc Big Data and Data Science Technology is specifically designed to enable you to develop in-depth technical knowledge that will allow you to discover new data-driven solutions. There is a need in the market for those with qualifications and skills in data analytics and machine learning.

Key features:

- Develop in-demand skills to work in a range of roles within the IT industry.
- Enhance your knowledge of SPSS and Tableau software packages; MySQL, Python, R language or similar.
- Train and deploy distributed machine learning modules using cloud-based platforms such as Google Cloud, AWS, Microsoft Azure, or similar.

Careers and further study

This Master's programme has been designed to ensure that graduates will be equipped to work in a variety of careers in the IT industry or to progress to academic or research-orientated careers. Possible job roles include:

- Machine Learning Engineer
- Data Engineer
- Business Analyst
- Data and Analytics Manager
- Business Intelligence Analyst
- AI Cloud Architect
- Data Architect

	Master's Programme	Advanced Practice
Duration	1 year	16 - 24 months
Tuition fee	UK: £9,960 International: £19,750	UK: £12,960 International: £22,750
Start dates	September, January, May	
Assessment method	Coursework	
Delivery method	Full-time classroom based	
Teaching methods	Lectures, seminars and tutorials with additional independent study	
Entry requirements	Minimum of a 2:2 honours degree or equivalent in any discipline. Professional qualifications may also be accepted.	
English language requirements	IELTS 6.5, with no single element below 5.5 or equivalent. Internal English language test is also accepted.	

Example modules:

- Information Governance and Cyber Security
- Leadership in a Digital Age
- Applied Data Science
- Academic Language Skills for Computer and Information Sciences (0 credits)
- Research Methods for Professional Practice
- Big Data Analytics
- Machine Learning on Cloud
- Computing and Digital Technologies Project (60 credits)

Advanced Practice stage

Students will choose one of the following modules:

- Consultancy Project (60 credits)
- Research Project (60 credits)
- Internship (60 credits)

All modules are 20 credits unless otherwise stated.

MSc Technology for Sustainable Cities



This programme offers a multidisciplinary approach to planning sustainable urban solutions, developing computing expertise with urban planning technologies to prepare you for an exciting career applying technologies to more sustainable urban living. Gain exposure to theories and principles relating to the design, development and testing of applications used in smart cities.

Key features:

- Develop essential skills required to help you become a digital leader.
- Work in QGIS (Quantum Geographic Information System) or a similar cross-platform to view, edit and analyse spatial data and be introduced to C++ or Python to create plugins.
- Design an IoT solution for a sustainable smart city as part of your assessment.

Careers and further study

This Masters programme prepares you for a range of careers in the field of urban planning for smart cities, including management and leadership in computing. Typical job roles include:

- Sustainable City Designer
- Smart City Planner and Data Scientist
- IoT Infrastructure Designer
- Machine Learning Scientist
- Data Scientist

	Master's Programme	Advanced Practice
Duration	1 year	16 - 24 months
Tuition fee	UK: £9,960 International: £19,750	UK: £12,960 International: £22,750
Start dates	September	
Assessment method	Coursework	
Delivery method	Full-time classroom based	
Teaching methods	Lectures, seminars and tutorials with additional independent study	
Entry requirements	Minimum of a 2:2 honours degree or equivalent in any discipline. Professional qualifications may also be accepted.	
English language requirements	IELTS 6.5, with no single element below 5.5 or equivalent. Internal English language test is also accepted.	

Example modules:

- Information Governance and Cyber Security
- Leadership in a Digital Age
- GIS for Smart Cities
- Academic Language Skills for Computer and Information Sciences (0 credits)
- Research Methods for Professional Practice
- IoT for Sustainable Development
- Blockchain for Sustainability
- Computing and Digital Technologies Project (60 credits)

Advanced Practice stage

Students will choose one of the following modules:

- Consultancy Project (60 credits)
- Research Project (60 credits)
- Internship (60 credits)

All modules are 20 credits unless otherwise stated.

MA Luxury Brand Management



The programme aims to develop an innovative approach to the professional luxury brand management of luxury consumable goods (cars, cosmetics, fashion, transport and beverage).

The programme provides you with the critical knowledge and awareness of the complex issues involved in the luxury consumable goods sector in the 21st century, working on concepts and platforms such as brand management, marketing, advertising and social media.

Key features:

- Develop your skills in enterprise and leadership in the growing luxury brand sector.
- The programme includes a live project, giving you a hands-on experience with a luxury brand company based on real-life situations.
- Enhance your understanding of the production, distribution and strategic positioning of luxury goods.

Careers and further study

This programme encourages the development of entrepreneurial behaviours such as setting clear goals that you need to succeed in your future career. You will learn essential critical thinking skills needed to tackle the day-to-day challenges of the industry and succeed in a career as a global luxury brand manager or in sectors such as:

- PR
- Brand management
- Hospitality / Events
- Project management
- Marketing
- Advertising

	Master's Programme	Advanced Practice
Duration	1 year	21 - 24 months
Tuition fee	UK: £9,250 International: £19,750	UK: £12,250 International: £22,750
Start dates	September	
Assessment method	Coursework	
Delivery method	Full-time classroom based	
Teaching methods	Lectures, seminars and tutorials with additional independent study	
Entry requirements	Minimum of a 2:2 honours degree or equivalent from a recognised university. Professional qualifications may also be accepted.	
English language requirements	IELTS 6.5 (or above) with no single element below 5.5 or equivalent. Internal English language test is also accepted.	

Example modules:

- Academic and Professional Development (0 credits)
- Luxury Brand Management
- Luxury Brand Value
- Luxury Industry Project
- Design Process
- Luxury Brand Management Dissertation (60 credits)

Advanced Practice stage

For students completing an internship:

- Internship (60 credits)

For students not completing an internship:

- Consultancy Project (60 credits)

or

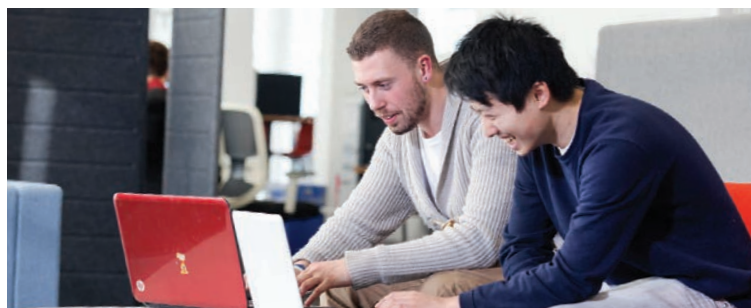
- Research Project (60 credits)

All students will then progress to:

- Luxury Brand Management Dissertation (60 credits)

All modules are 30 credits unless otherwise stated.

MSc Business with Specialisms*



The 'MSc Business with' programmes are postgraduate degrees that develop broad business skills while offering a specialist pathway. This specialism focuses on a particular sector and provides a competitive edge that will enhance your employability.

Available programmes

MSc Business with Business Analytics

MSc Business with Entrepreneurship

MSc Business with Financial Management

MSc Business with Hospitality and Tourism Management

MSc Business with Human Resource Management

MSc Business with International Management

MSc Business with Marketing Management

Example modules:

- Strategy, Innovation and Change (20 credits)
- Leadership and Management in Professional Practice (20 credits)
- Data Analytics and Project Management for Business Intelligence (20 credits)
- Academic and Employability Skills and Research Methods and Masters Dissertation (60 credits)
- International Business Simulation (20 credits)

	Master's Programme	Advanced Practice
Duration	1 year	16-24 months
Tuition fee	UK: £11,250 International: £19,750	UK: £14,250 International: £22,750
Start dates	September, January, May	
Assessment method	Coursework	
Delivery method	Full-time classroom based	
Teaching methods	Lectures, seminars, studios, tutorials, and workshops	
Entry requirements	Minimum 2:2 honours degree from a UK university or equivalent. Substantial experience in a business organisation or relevant professional qualifications may also be considered.	
English language requirements	IELTS 6.5 (or above) with no single element below 5.5 or equivalent. Internal English language test is also accepted.	

Advanced practice option for the "Business with" specialisms involves the masters dissertation being done before the advanced practice modules, and these include students choosing 1 out of 4 options:

- Masters Internship
- Consultancy Study
- Enterprise Business Start up
- Professional Skills Practice

Careers and further study

Graduates of the MSc Business with programmes typically go into professional and graduate management positions.

The Newcastle Business School is part of a select group of business schools worldwide, following accreditation by the Association to Advance Collegiate Schools of Business (AACSB) in business and accounting - the first in Europe to gain the double accreditation.

Specialist Pathways

The following information details the additional example modules specific to each programme, as well as any differences in how the programme is presented.

MSc Business with Business Analytics

- Strategic Marketing and Analytics
- Business Intelligence in Practice

MSc Business with Entrepreneurship

- New Venture Development
- Design for Digital Enterprise

MSc Business with Financial Management

- Financial Technologies for Market Modelling and Analysis
- Corporate Finance

MSc Business with Hospitality and Tourism Management

- Hospitality Management with Digital Innovation
- International Tourism Management and Development

MSc Business with Human Resource Management

- Analysing Organisational Dynamics
- HRM and People Analytics

MSc Business with International Management*

- Advances in Responsible Global Business Management
- Strategic Marketing and Analytics

MSc Business with Marketing Management

- Consumer Behaviour in Contemporary Consumption Context
- Strategic Marketing and Analytics

**Also available part time for UK/Home students*



"International Management appealed to me because of the potential to communicate and work with people across the entire world. I feel that the course has given me a lot of knowledge and I truly feel like I'm learning from the best."

Diana Sanda Faieran | *MSc Business with International Management*

MSc Computing and Technology



The MSc Computing and Technology has been designed in consultation with partners in the industry to ensure you graduate with up-to-date and industry-relevant skills and knowledge.

The programme develops competencies in a range of computing techniques alongside softer skills in leadership, communication, problem solving and commercial reasoning.

Key features:

- Develop your business intelligence and leadership capabilities.
- Enhance your knowledge in the application of programming language, big data and software life cycle modelling.
- Learn how to develop an innovation strategy whilst assessing associated risks and innovation capabilities in an organisation.

Careers and further study

This Masters programme has been designed to ensure that graduates will be equipped to work in a variety of careers in the IT industry or to progress to academic or research-orientated careers. The qualification is designed to accelerate your skills and competence in a range of job roles, including:

- Software Engineer
- Database Developer
- Data Analyst
- Information Security professional
- Business Analyst

	Master's Programme	Advanced Practice
Duration	1 year	16-24 months
Tuition fee	UK: £9,960 International: £19,750	UK: £12,960 International: £22,750
Start dates	September, January, May	
Assessment method	Coursework	
Delivery method	Full-time classroom based	
Teaching methods	Lectures, seminars and tutorials in computing labs with additional independent study	
Entry requirements	Minimum of a 2:2 honours degree or equivalent in any discipline. Professional qualifications may also be accepted.	
English language requirements	IELTS 6.5 (or above) with no single element below 5.5, or equivalent. Internal English language test is also accepted.	

Example modules:

- Information Governance and Cyber Security
- Leadership in a Digital Age
- Principles of Software Engineering
- Database and Analytics Principles
- Innovations in Business and Technology
- Research Methods for Professional Practice
- Academic Language Skills for Computer and Information Sciences (0 credits)
- Computing and Digital Technologies Project (60 credits)

Advanced Practice stage

For students completing an internship:

- Internship (60 credits)

For students not completing an internship:

- Group Consultancy Project (60 credits)
- or**
- Research Project (60 credits)

All modules are 20 credits unless otherwise stated.

MSc Cyber Security



Our MSc Cyber Security provides you with a critical understanding of information governance and assurance, combined with technology risk management practices.

You will be introduced to key theoretical and practical aspects using real-world scenarios and case studies. The course will develop and enhance your ability to handle security incidents as well as identifying new and existing threats and determining methods to minimise them.

Key features:

- Develop key skills which are in high demand by employers to take on a leading role within the computer science industry.
- Enhance your ability to handle and minimise security threats and incidents.
- Expand your knowledge on key topics such as Information Governance and Security, Network Security, Ethical Hacking for Cyber Security, and more.

Careers and further study

For those with high career aspirations, this programme can give you an extra edge in today's competitive job market. Graduates from the programme will be equipped to work in a variety of careers in the IT industry or to progress to academic or research-orientated careers. Potential job roles include:

- Cyber Security Engineer
- Cyber Security Analyst
- Cyber Security Consultant
- Software engineer
- Artificial intelligence analyst
- IT consultant



	Master's Programme	Advanced Practice
Duration	1 year	16-24 months
Tuition fee	UK: £9,960 International: £19,750	UK: £12,960 International: £22,750
Start dates	September, January, May	
Assessment method	Coursework	
Delivery method	Full-time classroom based	
Teaching methods	Lectures, tutorials and practicals with additional independent study	
Entry requirements	Minimum of a 2:2 honours degree or equivalent from a recognised university in a related subject area. Professional qualifications may also be accepted.	
English language requirements	IELTS 6.5 (or above) with no single element below 5.5 or equivalent. Internal English language test is also accepted.	

Example modules:

- Information Governance and Security
- Ethical Hacking for Cyber Security
- Network Security
- Information Assurance and Risk Management
- Research Methods and Project Management
- Wireless Networks and Security
- MSc Computer Science and Digital Technologies Project (60 credits)

Advanced Practice stage

For students completing an internship:

- Master's Internship (60 credits)

For students not completing an internship:

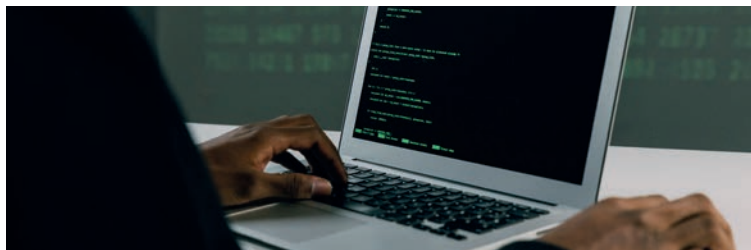
- Research Placement (60 credits)

All modules are 20 credits unless otherwise stated.

Also available as a part-time programme. See page 108 for more information.

This MSc Cyber Security received full certification in Cyber Security from the NCSC (National Cyber Security Centre).

MSc Cyber Security Technology



Our MSc Cyber Security Technology has been designed for those who have an undergraduate degree in any discipline, with no prior cyber security experience, and wish to study a cyber security qualification in order to develop a career path in this discipline.

Key features:

- Develop your business intelligence and leadership capabilities.
- Enhance your employability by developing your theoretical and applied knowledge in the rapidly growing cyber security industry.
- Demonstrate your security capabilities in important emerging technologies such as the cloud and big data.

Careers and further study

This master's programme has been designed to ensure that graduates from the programme will be equipped to work in a variety of careers in the cyber security/IT industry or to progress to academic or research-orientated careers. The qualification is designed to accelerate your skills and competence in a range of job roles, including:

- Cyber Security Engineer
- Cyber Security Analyst
- Cyber Security Consultant
- IT Security and Support Manager
- Information Security professional
- Business Analyst Consultant

	Master's Programme	Advanced Practice
Duration	1 year	16-24 months
Tuition fee	UK: £9,960 International: £19,750	UK: £12,960 International: £22,750
Start dates	September, January, May	
Assessment method	Coursework	
Delivery method	Full-time classroom based	
Teaching methods	Lectures, workshops, labs, seminars and tutorials with additional independent study	
Entry requirements	Minimum of a 2:2 honours degree or equivalent from a recognised university in any subject (except Cyber Security). Professional qualifications may also be accepted.	
English language requirements	IELTS 6.5 (or above) with no single element below 5.5 or equivalent. Internal English language test is also accepted.	

Example modules:

- Information Governance and Cyber Security
- Leadership in a Digital Age
- Big Data and Cloud Security
- Computer Networks and Security
- Computer Security
- Research Methods for Professional Practice
- Academic Language Skills for Computer and Information Sciences (0 credits)
- Computing and Digital Technologies Project (60 credits)

Advanced Practice stage

For students completing an internship:

- Master's Internship (60 credits)

For students not completing an internship:

- Advanced Practice Research Project (60 credits)

or

- Advanced Practice Group Consultancy Project (60 credits)

All modules are 20 credits unless otherwise stated.

Also available as a part-time programme. See page 108 for more information.

MSc Digital Marketing



Whether you are a business student looking to specialise in the digital domain or looking to join the marketing world, the MSc Digital Marketing programme has been designed to accelerate your career potential in a rapidly growing sector.

You will understand the value of, and methods for, determining return on investment of internet marketing programs, as well as online visitor and buyer behaviour, customer journey mapping, mobile marketing and social media.

We have established working relationships with key bodies such as the Chartered Institute of Marketing (CIM) and the Institute of Data and Marketing (IDM) allowing the course content to be reflective of their syllabus.

Key features:

- Learn how to integrate new tactics and strategies with traditional marketing tools and practices.
- Develop your understanding of leadership and management.
- Enhance your employability within the marketing industry.

Graduates will be well suited to secure potential job roles such as:

- Brand manager
- Digital marketer
- Social media manager
- Advertising director
- Public relations

	Master's Programme	Advanced Practice
Duration	1 year	16-24 months
Tuition fee	UK: £11,250 International: £19,750	UK: £14,250 International: £22,750
Start dates	September, January, May	
Assessment method	Coursework and exams	
Delivery method	Full-time classroom based	
Teaching methods	Lectures, seminars and workshops with additional independent study	
Entry requirements	Minimum of a 2:2 honours degree or equivalent from a recognised university. Professional qualifications may also be accepted.	
English language requirements	IELTS 6.5 (or above) with no single element below 5.5 or equivalent. Internal English language test is also accepted.	

Example modules:

- Marketing Metrics and Analysis
- Strategic Marketing in the Digital Era
- The Digital Customer Journey: Data, Profiling and CRM
- Leadership and Management Development
- Research Methods for Analytics for Business Practice
- Master's Dissertation (60 credits)

Advanced Practice stage

For students completing an internship:

- Master's Internship (60 credits)
- Master's Dissertation (60 credits)

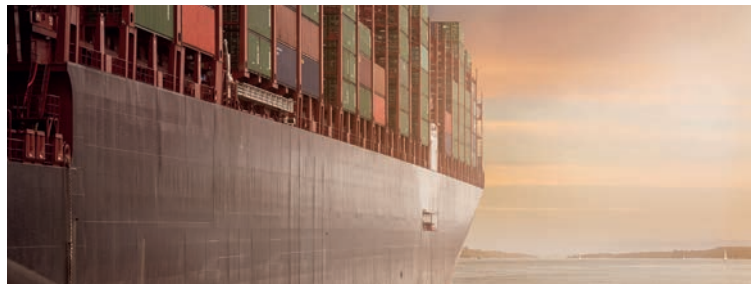
For students not completing an internship:

- Business Clinic PG Group Consultancy Project (60 credits)
- Applied Management Work Investigation (60 credits)*

All modules are 20 credits unless otherwise stated.

**Progression to the Applied Management Work Investigation is subject to specific entry requirements, otherwise you will progress on to a Dissertation.*

MSc Global Logistics Operations and Supply Chain Management



This course has been designed to enable you to acquire an in-depth understanding of the major areas of knowledge and philosophical approaches that underpin the concept of the global supply process.

Key features:

- Develop your expertise in this dynamic sector where individuals are in high demand.
- Enhance your employability by learning how to contribute effectively to global businesses.
- Innovate and apply emerging models, theories, technologies and ideas to solve business problems.

This programme is accredited by the Chartered Institute of Purchasing and Supply (CIPS) and the Chartered Institute of Logistics and Transport (CILT).

Careers and further study

Graduates can expect to secure roles in areas such as Operations Management, Materials Management, Purchasing and Quality Management. Typical roles include:

- Supplier Quality Manager
- Transport Consultant
- Distribution Services Manager
- E-commerce Operations Manager
- Freight Account Manager
- Logistics Project Manager



	Master's Programme	Advanced Practice
Duration	1 year	21-24 months
Tuition fee	UK: £9,960 International: £19,750	UK: £12,960 International: £22,750
Start dates	September, January, May	
Assessment method	Coursework and exams	
Delivery method	Full-time classroom based	
Teaching methods	Lectures, seminars and workshops with additional independent study	
Entry requirements	Minimum of a 2:2 honours degree or equivalent from a recognised university. Professional qualifications may also be accepted.	
English language requirements	IELTS 6.5 (or above) with no single element below 6.0, or equivalent. Internal English language test is also accepted.	

Example modules:

- Global Supply Chain and Operations Improvement
- Supply Chain Sustainability, Resilience and Risk Management
- Leadership and Management Development
- Research Methods and Analytics for Business Practice
- Strategic Supply Chain Relationship and Innovation
- Master's Dissertation (60 credits)
- Strategic Procurement and International Logistics

Advanced Practice stage

For students completing an internship:

- Master's Internship (60 credits)
- Master's Dissertation (60 credits)

For students not completing an internship:

- Business Clinic PG Group Consultancy Project (60 credits)
- Applied Management Work Investigation (60 credits)*

All modules are 20 credits unless otherwise stated.

**Progression to the Applied Management Work Investigation is subject to specific entry requirements, otherwise you will progress on to a Dissertation.*

MSc International Project Management



This programme has received the Association for Project Management (APM) academic accreditation and addresses the knowledge, skills and behaviours required to successfully overcome project challenges and manage projects that span organisations, national boundaries and cultural differences.

In this programme, you will explore the effects of various social and political contexts on project management. You will develop your knowledge on how factors such as culture, ethics, religious and legal practices impact projects on an international scale and learn how to approach such challenges.

Key features:

- Develop your cultural awareness skills and understanding of different legal, social and political norms.
- Learn how to lead international projects and teams on budget and to a high standard.
- Enhance your strategic thinking and decision-making abilities.

Careers and further study

Past Northumbria University graduates have gone on to work for multinational companies such as BAE Systems, Volvo Car Group, the NHS, Siemens, IBM, Hewlett-Packard, Shell and Virgin Money. Potential job roles include:

- Project manager
- Programme manager
- Project portfolio manager
- Management consultant
- Business developer
- Entrepreneur
- Quality manager and director



	Master's Programme	Advanced Practice
Duration	1 year	16-24 months
Tuition fee	UK: £9,960 International: £19,750	UK: £12,960 International: £22,750
Start dates	September, January, May	
Assessment method	Coursework	
Delivery method	Full-time classroom based	
Teaching methods	Lectures, seminars and workshops with additional independent study	
Entry requirements	Minimum of a 2:2 honours degree or equivalent from a recognised university. Professional qualifications may also be accepted.	
English language requirements	IELTS 6.5 (or above) with no single element below 5.5 or equivalent. Internal English language test is also accepted.	

Example modules:

- Strategic Management
- Project Implementation in a Multinational Context
- International Financial and Contractual Management
- Managing Programmes and Projects
- Research Methods for Professional Practice
- People Management in Global Organisations
- Academic Language Skills (0 credits)
- Professional Practice in Project Management Project (60 credits)

Advanced Practice stage

For students completing an internship:

- Internship (60 credits)

For students not completing an internship you will choose between one of the following:

- Research Project (60 credits)
- Consultancy Project (60 credits)

All students will then progress to:

- Professional Practice in Project Management Project (60 credits)

All modules are 20 credits unless otherwise stated.

MSc Web and Mobile Development Technologies



The MSc Web and Mobile Development Technologies is designed to help you develop the lifelong skills needed to rise to the challenge and opportunity of emerging technologies.

During this course key themes of study include theories and principles relating to emerging design, the development and testing of web and mobile applications and User Experience/User Interface (UX/UI) design processes.

Key features:

- Develop technical skills in the design, development and testing of web and mobile applications.
- Understand the current shape of emerging technologies in the web, mobile and cloud.
- Learn the mobile development and web development skills needed to succeed in the cutting edge of technology.

Duration	1 year
Tuition fee	UK: £9,250 International: £19,750
Start dates	September
Assessment method	Coursework
Delivery method	Full time classroom based
Teaching methods	Lectures, tutorials and workshops with additional independent study
Entry requirements	Minimum of a 2:2 honours degree or equivalent from a recognised university in a related subject area. Professional qualifications may also be accepted.
English language requirements	IELTS 6.5 with no single element below 5.5, or equivalent. Internal English language test is also accepted.

Careers and further study

This programme has been designed in consultation with partners from the industry to ensure you learn up-to-date computing knowledge required by employers across the industry. Potential job roles include:

- Leadership and management in IT
- Cloud Architect
- Web Security Analyst
- Software Engineer
- Web Designer and Developer
- User Experience Designer and Developer
- Mobile Application Design

Example modules:

- Web Engineering
- UX/UI Theory, Experience and Development
- Web & Mobile Application Security
- Cloud Computing
- Internet of Things
- Mobile App Development
- MSc Computer Science and Digital Technologies Project (60 credits)

All modules are 20 credits unless otherwise stated.

MA/MSc Multidisciplinary Innovation



This exciting course will give you a transformative educational experience that combines design thinking, entrepreneurial leadership and real-world client briefs from start-up charities to Fortune 500 corporations to develop your innovative and entrepreneurial mindset.

You will learn in a creative environment and undertake live projects across the whole year, working with our academics and researchers alongside real-world clients in the designated design studio that replicates an agency environment.

Key features:

- Available as an MA or MSc, depending on the research methods used in your thesis
- Enhance your employability & expand your professional network by working directly with potential employers and have between 5-7 client projects to add to your CV.
- Be supported and coached by the Innovator in Residence at the design studio which replicates an agency environment.

Duration	1 year
Tuition fee	UK: £9,250 International: £18,250
Start dates	September, January
Assessment method	Coursework
Delivery method	Part-time classroom based blended learning
Teaching methods	Lectures, workshops, simulations, and seminars with additional independent study
Entry requirements	Minimum 2:2 honours degree, or equivalent, from a recognised university in any subject
English language requirements	IELTS 6.5 (or above) with no single element below 5.5 or equivalent.

Careers and further study

At the end of this course, you will be prepared to take on strategic roles by adding your critical thinking skills, strategic innovation, and research projects to your CV that you have undertaken with organisations from the likes of micro-charities to global corporations.

Previous graduates from this course have secured senior roles within large organisations, including roles such as:

- Creative Account Manager
- Innovation Strategy Consultant
- User Experience Researcher
- Global Category Manager

Regardless of your discipline, MDI opens the door to many different options post-study. These can include finding an innovation-based career in a consultancy, starting up an enterprise or even a small business.

Example modules:

- Design-led Innovation Practice – focuses on project planning, coordination, and management skills.
- Strategic Innovation Practice – focuses on brand development, strategic goal setting, and business modelling.
- Responsible Innovation Practice – focuses on responsible business practice, resilient communities, and mega trends.

PART-TIME POSTGRADUATE DEGREES



Our part-time postgraduate degrees are specifically designed to allow you to advance your career whilst accommodating work and personal life.

Build your network

Throughout your course you will be taught by experienced academics and practitioners, learning alongside like-minded working professionals from a wealth of industries and backgrounds, growing your professional network.

Change direction

Whether you are looking for a career change or to advance in your current role, our highly applied, practical programmes in project management, IT and technology can enable you to reach your career goals.

Accessible education

All applications are reviewed and approved by Northumbria University on an individual basis. We take into consideration your full education and working background and as such, we do accept students who do not have an undergraduate degree.

If you would like to contact us directly, please email pt.admissions@northumbria.ac.uk

MSc Cyber Security and MSc Cyber Security Technology



"MSc Cyber Security was a must-do on my list from the moment I came in contact with networking. I am balancing my studies whilst currently working as a Network Security Engineer. My role, as part of the team, is to manage remote access connections, build risk mitigation strategies and ensure fault tolerance in the network."

Diana Balasa | MSc Cyber Security (Part-Time)

	MSc Cyber Security	MSc Cyber Security Technology
Duration	2 years	
Tuition fee	UK: £9,960	
Start dates	October, January	
Assessment	Coursework	
Delivery method	Part-time, classroom based and blended learning	
Teaching methods	Lectures, workshops, simulations, and seminars with additional independent study	
Entry requirements	Minimum of a 2:2 honours degree or equivalent from a recognised university in a related subject area	Minimum of a 2:2 honours degree or equivalent from a recognised university in any subject (except Cyber Security)
	Professional qualifications and experience may also be accepted	
English language requirements	GCSE English Grade 4/C, or equivalent	
Full-time available	Yes; see page 94	Yes; see page 96

MSc Programme and Project Management



This programme has received the Association for Project Management (APM) academic accreditation. Designed for those who have an undergraduate degree from any discipline, or suitable work experience, who wish to further develop knowledge, skills and career prospects in Programme and Project Management.

You will be introduced to theories and principles relating to financial and contractual management, leading teams including those that are geographically diverse, strategic leadership and the management of change, risk and opportunities.



Key features:

- Demonstrate complex and specialised knowledge and skills in the areas of Programme and Project Management.
- Appreciate and evaluate innovations, advances and major issues at the forefront of Project Management and related technologies and their implications.

Duration	2 years
Tuition fee	UK: £9,960
Start dates	October, January
Assessment method	Coursework
Delivery method	Part-time classroom based blended learning
Teaching methods	Lectures, workshops, simulations, and seminars with additional independent study
Entry requirements	Minimum of a 2:2 (second class) honours or equivalent or professional qualifications that are equivalent to an honours degree or work experience may also be acceptable.
English language requirements	GCSE English Grade 4/C, or equivalent. Internal English language test is also accepted.

Careers and further study

Past Northumbria University graduates have gone on to work for multinational companies such as BAE Systems, Volvo Car Group, NHS, Siemens, IBM, Hewlett-Packard, Shell and Virgin Money.

This qualification is designed to accelerate your skills and competence in a range of job roles, including the specific roles of:

- Project Manager
- Senior Project Manager
- Programme Manager
- Programme / Project Director

Example modules:

- Strategic Management
- Managing Programmes and Projects
- Research Methods for Professional Practice
- Financial and Contractual Management
- Professional Practice in Project Management Project (60 credits)

All modules are core and 20 credits unless otherwise stated.

MSc Business with International Management



This programme will build upon your current business knowledge and develop your professional & personal skills, which are essential for a wide variety of managerial-level roles.

This part-time programme is open to students from both business and non-business academic backgrounds, and will cover aspects of international business, strategic management, innovation, leadership, business decision-making, and organisational analysis. These will develop your strategic awareness, leadership potential and understanding of the theory and practice of international business and management.

Key features:

- Apply your learning in international business within a realistic simulated environment and use this experience as a tool to develop your skills as a future manager, team shaper, and strategic-level decision maker.
- In the first module "Leadership and Management in Professional Practice" you will have a 2-day residential event where you will participate in a variety of practical activities and deal with complex scenarios.
- Strategise and problem-solve in studio-based sessions where you will work dynamically with your team to design innovative responses to business scenarios.

Duration	2 years
Tuition fee	UK: £9,960
Start dates	October, January
Assessment method	Coursework and exams
Delivery method	Part-time classroom and virtual sessions
Teaching methods	Workshops, tutorials, directed study and discussion forums.
Entry requirements	Minimum of a 2:2 (second class) honours degree from a UK university or its equivalent.
English language requirements	IELTS 6.5 (or above) with no single element below 6.0 or equivalent.

Careers and further study

Thanks to the specialist modules on this programme, you'll gain expert knowledge in areas related to international management, including contemporary global issues, marketing strategy, and business management practices that will enable you to enhance your employability in this field.

Potential career routes after this course include but are not limited to:

- Management consultant
- Business Development Manager
- Chief Executive / Senior Official
- Marketing and Sales Director
- Business Analyst
- Public Affairs Consultant

Example modules:

- Leadership and Management in Professional Practice
- Strategy, Innovation and Change
- Data Analytics and Project Management for Business Intelligence
- International Business Simulation
- Advances in Responsible Global Business Management
- Strategic Marketing and Analytics
- Academic and Employability Skills and Research Methods and Masters Dissertation (60 credits)

All modules are core and 20 credits unless otherwise stated.

ADMISSIONS AND SELECTION



Entry requirements

All of our entry requirements can be found on individual course pages and on our website. At Northumbria we accept a wide variety of academic and vocational qualifications for entry.

Advice and information

If you require any additional information about any of our courses, or need advice on entry requirements or the application process, please contact our Admissions team on:

+44 (0)20 8023 7118

Selection process

We will read your application in detail, looking very carefully at the information you have told us about yourself. We are interested in your academic qualifications and potential; work and life experiences; and your personal skills and qualities.

For further information on the selection process for a specific course, please visit the course pages on our website.

UK APPLICANTS

This is a quick guide to your application journey.
For more information on applying to Northumbria,
visit our website.

UK applicants follow the application process outlined overleaf. Once you have selected a course, you need to ensure that you have, or are working towards, the appropriate entry qualifications.

Undergraduate courses

To apply for an undergraduate programme at Northumbria University London, you should apply via UCAS at: **ucas.com**

The UCAS institution code for Northumbria University is NORTH N77.

Postgraduate courses

Applications for all postgraduate courses should be made direct to the University via our online application form. You can find this form on our website: **london.northumbria.ac.uk/pg**

While most of our courses do not set an exact deadline for applications, you are advised to apply early to secure your place and organise any student funding.

HOW DO YOU APPLY?

Choose the course
you want to study

Upload all supporting documents
and submit your application

Complete all required sections
of the application form

ACCEPTING YOUR OFFER

Accept
your offer

Review
and
meet any
outstanding
conditions

Wait for the decision about
your application

CONGRATULATIONS YOU'RE COMING TO NORTHUMBRIA!

Await any further instruction
from the University

Ensure your Finance and
accommodation needs are arranged

WELCOME TO NORTHUMBRIA!
ATTEND ENROLMENT AND INDUCTION WEEK

INTERNATIONAL APPLICANTS

This is a quick guide on how to apply for a course at Northumbria. For more details visit our website.

Applications can be made to most undergraduate and postgraduate taught courses by using the Apply Now buttons on our online course pages. For information on international entry qualifications visit: **london.northumbria.ac.uk-applications**

1

Completing your application

Once you have completed all sections of your application form, you can either submit it directly to the Admissions Team or the Northumbria University Regional Office responsible for your country (see **page 126** for details).

Please ensure you include all required supporting documents with your application as indicated by the guidelines.

2

Entry requirements

Full details about the academic entry requirements for each course can be found on the course information pages accessed via **london.northumbria.ac.uk-courses**



3

What happens next?

Once we receive your completed application, you should receive a decision by email within a few weeks. This will include any outstanding conditions you will need to meet to satisfy the conditions of your offer.



4

Accepting your offer

To accept your offer, you should complete and return an Offer Acceptance Form, and, unless your fees are being paid by a recognised financial sponsor, you will also need to pay a deposit and send us your Deposit Payment Form.

If your offer is conditional, please send us evidence that you have met the conditions of your offer as soon as possible so that we can confirm your place on your course.



5

Applying for a Visa

In order to apply for a Student Route visa (if applicable), you will need a Confirmation of Acceptance for Studies (CAS), which you can request on your Offer Acceptance Form once you have satisfied all conditions and paid any necessary deposit. Please note, in order for you to receive your CAS in time for your visa application and the start of your course, you will need to send your offer acceptance and CAS request to us by the advertised deadlines on our website.

You are required to inform us of any previous immigration history or student visas you may have previously held, or your current visa if you currently live in the UK.



6

Deadlines

We strongly recommend that you apply as early as possible to allow enough time to complete all the preparations you need. After receiving an offer it can take several months to arrange your finances and apply for a visa and it is important that you arrive in good time for our international enrolment session.

Further details on important dates can be found at **london.northumbria.ac.uk-deadlines**

YOUR COUNTRY

At Northumbria University London Campus, we are proud to be able to welcome students all across the world to study on our programmes. The diversity of our London Campus reflects the true cosmopolitan feel of the city it calls home.

By visiting our website you can access a country-specific guide containing lots of useful information to help you apply to study with us.

Find out more here: **london.northumbria.ac.uk/your-country**

China

Over 120,000 Chinese people live in London. There are many Chinese community centres across the city, found in: Chinatown, Barnet, Camden, Hackney, Islington, Lambeth, Haringey and Tower Hamlets. In addition, there are large organisations such as the London Chinese Community Centre, London Chinatown Chinese Association and the London Cultural Centre which all organise regular community events that you can attend.

Depending on your selected course programme, different entry requirements apply. Find out more: **london.northumbria.ac.uk/china**

Colombia

As a Colombian student, you have access to financial support, where loans (dependant on the institution) are available to help cover some, if not all of your fees.

Depending on your selected course programme, different entry requirements apply. Find out more: **london.northumbria.ac.uk/colombia**

India

British Indians make up just over 6% of the city's population with large communities in West and East London. Every year there are large Eid and Diwali festivals in Trafalgar Square, with many smaller community celebrations also taking place in the different London boroughs.

Depending on your selected course programme, different entry requirements apply. Find out more: **london.northumbria.ac.uk/india**



Morocco

International students make up 33% of the total student population in the city. For those looking for a taste of home, Golborne Road in North Kensington is known as 'little Morocco' and you can find plenty of Moroccan owned cafés, grocery stores and community organisations to get involved in.

Depending on your selected course programme, different entry requirements apply. Find out more: **london.northumbria.ac.uk/morocco**

Nigeria

London is home to 100,000 Nigerians. Several areas all have strong Nigerian communities devoted to religion, business, parties and food. If you're looking for the taste of Nigeria in London, or to catch the latest Nigerian beats, there are lots of places to try.

Depending on your selected course programme, different entry requirements apply. Find out more: **london.northumbria.ac.uk/nigeria**

Vietnam

There are large Vietnamese communities in Lewisham, Hackney and Southwark. If you are looking for bánh mì, pho, or another taste of home, there are a growing number of Vietnamese restaurants nearby located on Kingsland Road (a 15 minute walk from the Campus) or Mare Street (a 15 minute bus ride away).

You can also find several Asian supermarkets in nearby if you are looking to cook for yourself.

Depending on your selected course programme, different entry requirements apply. Find out more: **london.northumbria.ac.uk/vietnam**

CONTACT US



There are a range of ways you can get in touch. Please contact the relevant team via our channels.

Campus:

London Campus,
Northumbria University,
110-114 Middlesex Street,
London E1 7HT



/NorthumbriaLondon

Student applications/admissions: london.admissions@northumbria.ac.uk

Part-time enquiries/admissions: pt.admissions@northumbria.ac.uk

Recruitment line (international students): +44 (0)20 8003 0673

Recruitment line (part-time students): +44 (0)20 8108 3750

OVERSEAS OFFICES

Thailand - Bangkok

Also responsible for Indonesia, Cambodia, Myanmar, Pakistan and Vietnam.

Northumbria University
Thailand Office, 283/46 Unit 1001-1,
10th Floor, Home Place Building,
Sukhumvit 55 (Thonglor 13),
Bangkok 10110, Thailand

T: (+66) 2044 6430
E: thaioffice@northumbria.ac.uk

P. R. China - Beijing

Northumbria University
China Office, Room 1610, Block B,
Winterless Center,
Jia 1, Xi Da Wang Road
Chaoyang District,
Beijing 100026, P.R.China

T: (+86) 10 6538 8135
F: (+86) 10 6538 8136
E: teresa.zhao@northumbria.ac.uk

Malaysia

Also responsible for Hong Kong SAR, the Philippines, Singapore, Taiwan and South Korea.

Northumbria University
Malaysia Office, A-8-3, 8th Floor,
Northpoint Building @ Midvalley City,
1 Jalan Syed Putra Utara,
59200 Kuala Lumpur, Malaysia

T: (+60) 3 2287 8080
F: (+60) 3 2287 8282
E: malaysiaoffice@northumbria.ac.uk

Nigeria

Northumbria University
Pathway College, 5 Mekong,
Wuse, Abuja, Nigeria

T: (+234) 9065 235553
E: qahe.africa@qa.com

India

Also responsible for Bangladesh and Nepal.

308, Plot No-2, Sector-5,
Aggarwal Tower, MLU Plaza,
Dwarka, New Delhi – 110075, India

T: (+ 91) 999 959 8771
E: vikas.sharma@northumbria.ac.uk

Colombia

M: (+44) 7367 193 956
T: (+57) 312 361 9711
E: juliana.cortes@northumbria.ac.uk

Northumbria University and QA Higher Education are committed to being equal opportunities education providers and will therefore make reasonable adjustments for disabled applicants and students. All programmes included in this prospectus are delivered as part of a partnership between Northumbria University and QA Higher Education – a UK higher education provider. All of our programmes at the London Campus are validated by the University and taught by QA Higher Education and University staff.

The information given in this publication is accurate at the time of going to print in January 2024 and the University and QA Higher Education will use all reasonable efforts to deliver the programmes as described. The University and QA Higher Education reserve the right to withdraw or change the programmes or programme combinations included in this prospectus. These changes will only be made as a result of UK legal compliance, minimum student number requirements or for course validation reasons and applicants will be contacted by the University or QA Higher Education at the earliest opportunity in the instance of these changes occurring. Please check the website for up-to-date information on our programmes.

V1 01/24



Northumbria
University
NEWCASTLE

Newcastle • London • Amsterdam

london.northumbria.ac.uk