



In partnership with



# INTERNATIONAL PATHWAY PROGRAMMES

2023/24

[qa.solent.ac.uk/pathway](https://qa.solent.ac.uk/pathway)

**MAKE  
WAVES**



## Contents

Solent in the city	4
Cutting-edge campus	8
Why Solent	14
Living in Southampton	16
Our student residences	18
International pathways	20
International Foundation Programme	22
Money and support	28
Application journey	30
Our campus	33
Solent stories	34



## Solent in the city

We're a city centre campus, which means everything Southampton has to offer is right on your doorstep. If you're looking for arts, culture, sports and entertainment then the south-coast's biggest city delivers it all.

But we're also part of a warm, welcoming and diverse local community – working with our city partners and neighbours to celebrate Pride, support the local marathon, enjoy film and music festivals and much more.

Southampton is also a great place to get ahead. We're here to support your ambitions, so our close ties with businesses across the city help us deliver all the professional experience you'll need for your future career.

And why wait until you graduate to get started? Our Solent Creatives agency connects our student freelancers with the businesses that need their skills, our health and fitness students deliver popular community coaching programmes, and Re:So – our award-winning retail outlet – is run and stocked by our talented students and their design and fashion creations.

With everything you need for student life and beyond, we can't wait to welcome you.





## Food and drink

Southampton is jam-packed with seriously good food. Eat your way around the world with everything from tapas and dim sum to Mauritian street food, all at budget-friendly price points. And if it's drinks you are looking for, you're spoiled for choice with a huge range of coffee, cocktails and everything in between.



## Retail therapy

The city is home to one of the biggest shopping centres in the country with over 100 big name retailers. Explore beyond the bustling high street to find independent boutiques, vintage stores and retro markets where you can hunt for a bargain or find something special.



## Celebrate culture

Soak up some culture in your downtime – watch the latest West End tours at the south coast's biggest theatre, enjoy exhibitions at the city's art galleries and museums, see new releases and art-house classics at our two cinemas, or even join Solent's own community arts programme.



## Adventure awaits

Enjoy the freedom to explore, discover new places and meet new people. With Southampton's fast rail and road links to London and flights from Southampton Airport across Europe and beyond, your adventure starts here.



## Love music

Southampton loves music – and we've got something for everyone. You can head out to iconic indie venues or massive club nights, discover up-and-coming performers at local bars or catch the biggest names when they visit on tour. Whatever gets you moving, you'll find it here.



## Live sport

With Premier League football and international cricket at the heart of the city, it's an exciting place for sports fans. And if you'd rather get active yourself, then our coastal location opens up a world of new activities, from sailing to windsurfing.



## Room to breathe

If you're a runner, walker or cyclist, or just feel happier when you're surrounded by nature, you'll be right at home in our garden city. Our campus is surrounded by Southampton's parks, and with the woodlands of Southampton Common and the New Forest National Park on our doorstep, you'll never be far from a breath of fresh air.



## Campus life

We're right in the heart of the city – a five-minute walk through the park gives you convenient access to shops, restaurants, bars, and music and sport venues. Perfect for popping out with friends between lectures, celebrating the end of a busy week, and enjoying everything Southampton has to offer.



# Cutting-edge campus

Over the last few years we have made a £100 million investment in our campus, introducing state-of-the-art facilities to enhance your learning.

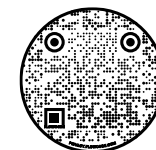
## The Spark building

Our award-winning teaching and learning building, the Spark, is a centrepiece of our campus – and everything about it is centred around you and your learning. Our lecture theatres include at-seat charging sockets for laptops and tablets, while the latest lecture-capture technology uploads to our virtual learning environment.

**The Spark is a BREEAM 'excellent'-rated building for its sustainability credentials.**

## Virtual tour

Take a virtual tour of our facilities; visit [www.solent.ac.uk/virtual-tour](http://www.solent.ac.uk/virtual-tour)





### Sports complex

Featuring two sports halls, two fitness studios, a health and fitness gym, a strength and conditioning gym and high-quality teaching facilities.



### Fully equipped broadcast vehicle

Used by Solent students to broadcast live from events such as the Glastonbury Festival, and package up footage for international broadcasters such as the BBC.



### A 60-metre hydrodynamic testing tank

Provides professional testing facilities for watercraft design. Students also have access to our temperature-controlled composite materials lab, 3D scanning and printing facilities, and a dedicated design suite.



### Library with flexible opening hours

Our well-stocked library is open 24 hours a day during term-time, and features a huge range of books, journals and other materials in both print and electronic format. There are over 800 study places, including group and individual study rooms and silent study areas.



### Digital cinema

Our student-run cinema makes us one of just a handful of universities worldwide with Dolby Atmos encoding capabilities.



### £43m invested in our maritime technology and campuses

Together with new high-tech campuses and a world leading model ship-handling centre, we continue to deliver high standards of professional port training and engineering education.



### Specialist photography studio

Our campus is also home to a specialist infinity cove – a photography studio specifically designed to give the impression that the background of an object extends to infinity.



### Bespoke nursing lab

Built to a bespoke design following consultation with industry, our six-bed simulated nursing ward reflects acute patient care in a clinical environment, enabling student nurses to practise their skills without any risk to patients. State-of-the-art equipment includes a high-fidelity Nursing Anne simulator – capable of verbal noises, breathing, blinking, and palpate pulses.





### £1m recording studios

Recently updated, the technology in our recording studios is professional standard throughout. The primary studio features an industry-leading 24-fader, six-knob Avid S6 M40 control surface. All nine studios run on Pro Tools HD and Logic Pro X software, complemented by quality microphone pre-amps and hardware compressors, EQs and a suite of plug-ins from Sonnox, McDSP, Avid and Melodyne.



### Performance space and HDTV studio

One of the biggest HD studios in the south of England. Plus two fully equipped HD TV studios, eight radio studios and ten audio recording studios; photography, animation and green-screen studios; and a professional-grade newsroom.



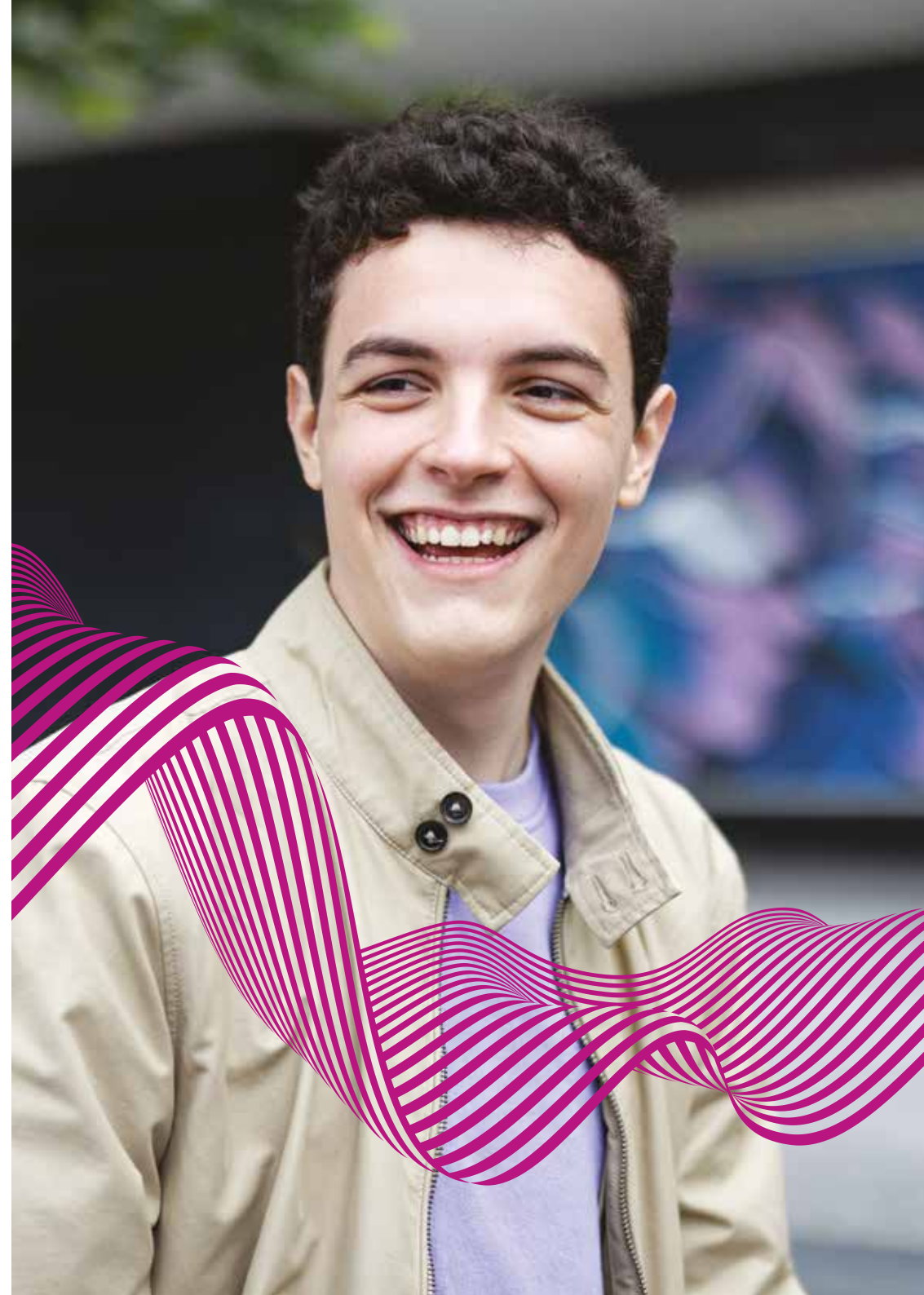
### Biomedical science lab

Our biomedical science laboratory is purpose-built to support teaching and research in biomedical science and nutrition. The space includes two teaching laboratories, one tissue culture laboratory and one preparation and instrumentation room.



### £1.3m sport science labs

Including purpose-built labs for biomechanics, nutrition and psychology, and a BASES-accredited physiology lab. You will have access to all the tools you need to monitor your subjects: data collection software, motion capture, eye-tracking, reaction timers, force transducers and more.



## Why Solent

At Solent, we offer the freedom to achieve. Through innovation, inspiration, and real-world opportunities. Through the latest tech and the latest theory, and practical chances to get hands-on with both. Through conversations with experts, with professionals, with mentors and peers. Through space to imagine and explore.

Grit, heart and imagination – that's what our students bring. We give them – give you – the skills, the connections, and the opportunities you need. So whatever you want from your career, from life? Solent Uni is here to help you get it.

## Strong links within the industry

Our course teams have strong links with local, national and international industries. While our mentoring programme can match you with a local industry specialist to help you develop your professional confidence.

Plus, our online student jobs board and our inhouse creative agencies provide employment and experience opportunities throughout your studies.

## Knowledge at your fingertips

Our modern libraries are home to a huge range of online and offline resources, plus award-winning service and support, and hundreds of bookable, wi-fi-enabled study spaces. Plus, our online learning environment puts learning materials, study guides and a personal eportfolio page at your fingertips.



Solent Business School, winner of the Outstanding Higher Education Training Provider of the Year at the CMI Awards 2022.



We've welcomed students of over 100 different nationalities and have a network of 75,000 alumni around the world



Official university partner of Premier League football club, Southampton FC



Our teaching is research-led, incorporating the latest thinking and developments across environment and engineering; social research and policy; human function and health; media, culture and the arts; and more.



11th in the sector for number of graduate start-ups (HESA 2022)



One of the world's leading maritime training academies



A photograph of three young adults walking on a city street. On the left, a man with a beard and a headband walks in a dark tank top. In the middle, a man with glasses and a dark sweater walks with a crossbody bag. On the right, a woman with blonde hair in a ponytail, wearing a pink shirt and a black leather jacket, walks with a white bag. They are walking past a cafe with a red awning that has 'St. Charles' written on it. The bottom of the image features a decorative graphic of green wavy lines.

# Living in Southampton

Our campus is right in the heart of this exciting city, giving you easy access to everything from food and drink to culture and sport.

## Entertainment

Southampton's Westquay and Marlands shopping centres offer around 150 shops along with varied selection of dining options.

Our high street has all the familiar names, while Oxford Street, Bedford Place and other venues offering a more boutique shopping experience. Southampton has a wide selection of pubs, bars, microbreweries and restaurants -everything from well-known chains to the unique menus of independent gems.

## Culture

Film lovers are spoiled for choice, with multiplexes - including the glamorous Showcase Cinema de Lux - and arthouse releases at Harbour Lights.

Southampton is home to one of the largest regional theatres in the UK, the Mayflower, which hosts all the West End's major touring productions, while Guildhall Square - just five minute walk from Solent's main campus - is at the heart of the city's cultural quarter. Here you'll find the new Nuffield theatre, the John Hansard Gallery, Southampton City Art Gallery, Sea City Museum and more.

## Space to relax

Whether you're looking for a place to sit and read, a quiet cafe for lunch with friends or somewhere for a quick football game, there's plenty of room to relax. Southampton is also spoiled for green spaces, with five central parks clustered around Solent's East Park Terrace campus, plus a vast 326-acre common.



# Our student residences

Where you live while studying means more than just a roof over your head. It's a place of your own – to relax, study and spend time with your friends.

#SOLENTSTORIES

**Giorgia Pizzimenti**  
BA (Hons) Fashion Journalism student

I lived in Kimber in my first year of university, which is in a lovely location. There was always someone to chat to in the common room or kitchen – we were all from different countries, so it was nice to find out about other cultures.



## David Moxon

117 rooms | En-suite  
8 minute walk to campus



## Chantry

208 rooms | Shared bathrooms  
10 minute walk to campus



## Kimber

274 rooms | En-suite  
8 minute walk to campus



## Deanery

422 rooms | En-suite  
12 minute walk to campus



## Hamwick

228 rooms | En-suite  
8 minute walk to campus

## What's included?

- Up to 100Mb WiFi access in each study-bedroom
- Personal contents insurance
- Social rooms with table tennis and pool tables
- All utility bills
- Cleaning of communal areas
- Repairs and maintenance
- Residence management team available 24 hours a day
- Adapted and accessible rooms for students with disabilities



## Virtual tour

Take a closer look at our modern student residences; visit [solent.ac.uk/virtual-tour](https://solent.ac.uk/virtual-tour)



## Private housing

Do you want a bit more independence? Southampton offers many private housing options – for details, visit [solent.ac.uk/accommodation](https://solent.ac.uk/accommodation) or contact our dedicated housing adviser on [accommodation@solent.ac.uk](mailto:accommodation@solent.ac.uk)



# International pathway programmes

If you're looking to study at Solent University and need to build on your existing qualifications to meet the entry requirements, our pathway programmes are designed to do just that.

Our pathway programmes will support and develop your English language ability and academic study skills to offer you progression onto creative, engineering, art, computing and business undergraduate degrees at Solent University.

## Why study with us?



Prepare yourself for UK academic study



Taught by lecturers and academics with experience supporting international students



Be part of a university campus from day one, with access to all of the universities facilities



Gradual introduction to living and studying in the UK

Visit us at [qa.solent.ac.uk/pathway](https://qa.solent.ac.uk/pathway)



#SOLENTSTORIES

**Tenu Evans**  
International Foundation Programme

My best experience so far is how welcoming the university is to international students. They threw a welcome party and the teaching techniques here are very understandable.

# International Foundation Programme

The International Foundation Programme is designed to develop your academic skills and English language levels to progress on to an undergraduate programme in a specific subject area.

<b>Level</b>	Foundation – NQF Level 3
<b>Duration</b>	2 terms
<b>Start dates</b>	October, January
<b>Tuition fee</b>	£12,000
<b>English language requirements</b>	IELTS 5.5 overall (minimum 5.5 in each individual component), or equivalent from a UKVI approved centre
<b>Academic entry requirements</b>	12 or 13 years of schooling dependent on the education system in country. Specific country entry requirements apply.
<b>Mode of study</b>	Full-time: lectures, seminars and workshops
<b>Assessment methods</b>	Coursework, in-class tests and portfolios
<b>Class hours per week</b>	16-20 hours
<b>Minimum age</b>	17 years old - you must turn 18 within the first 6 months of your undergraduate degree

EXAMPLE MODULES		
Term 1 and 2	Academic English	
	Academic Language in Context	
	Applied Academic Skills	
	Research project	
Pathway specific modules	Business and Management Pathway	Business Environment Management Fundamentals
	Creative Industries Pathway*	Introduction to Creative Practice or, Introduction to Media*
		Creative Project
	STEM Pathway	Foundation Mathematics Problem Solving

All single modules are 20 credits unless otherwise stated  
For a full list of module visit: [qa.solent.ac.uk/pathway/courses](http://qa.solent.ac.uk/pathway/courses)

\* Which module you study will depend on your target undergraduate degree.





## Business and Management Pathway

The Business and Management Pathway equips you with the essential skills to maximise your learning in a wide range of disciplines, from business and management, to marketing and accounting.

Investigating the business world through multiple lenses, you will develop an understanding of the environment in which businesses operate and the roles different functions play within a business. The pathway also introduces management theories practically, approaching business operations through the role of a manager.

## Creative Industries Pathway

The Creative Industries Pathway introduces you to the key principles and skills in media, art and design. You will have the opportunity to develop your knowledge in an area of which you have a particular interest within the creative industries. The aim is to develop your knowledge in an area of the creative industries which you are particularly interested in.

The course involves a creative project module which allows you to build upon your ideas, preparing you to progress on to a creative industries or media-related programme at undergraduate level.

## STEM Pathway

The STEM Pathway will teach you the fundamentals of scientific and mathematical reasoning, developing your use of statistics to test hypotheses and validity of scientific data. Assessments are based on demonstrating the application of the theory in projects and portfolios that are typical at undergraduate level, leaving you well-placed for successful undergraduate studies in a range of fields including sustainability, biomedical science and design and manufacture.



## International pathways progression options

On these pages, you can find the typical progression routes that feed into each undergraduate degree at Solent University.

Combined CAS options are available for your pathway programme and all of these undergraduate degrees, meaning you will have just one visa application that covers all of your studies at Solent.

Upon successfully completing your pathway programme you will be able to progress onto the following degrees:

### Business and Management Pathway

- BSc (Hons) Accountancy and Finance
- BSc (Hons) Business Management
- BSc (Hons) Business Management with Digital Technologies
- BSc (Hons) Business Management with Finance
- BSc (Hons) Business Management with Marketing
- BSc (Hons) Construction Management
- BA (Hons) Fashion Management with Marketing
- BSc (Hons) Football Studies
- BSc (Hons) International Business Management
- BSc (Hons) Maritime Business
- BA (Hons) Music Business
- BSc (Hons) Shipping and Port Management
- BA (Hons) Sociology
- BSc (Hons) Sport Management

### Creative Industries Pathway

- BA (Hons) Acting and Performance
- BA (Hons) Animation
- BA (Hons) Architectural Design and Technology
- BA (Hons) CGI and Visual Effects
- BA (Hons) Computer Games (Art)
- BA (Hons) Fashion and Beauty Media
- BA (Hons) Fashion Photography
- BA (Hons) Fashion Styling and Creative Direction
- BA (Hons) Film and Television
- BA (Hons) Film Production
- BA (Hons) Fine Art
- BA (Hons) Graphic Design
- BA (Hons) Illustration
- BA (Hons) Interior Design
- BA (Hons) Interior Design Decoration
- BA (Hons) Make Up and Hair Design
- BA (Hons) Media Production
- BA (Hons) Photography
- BSc (Hons) Popular Music Production
- BA (Hons) Post Production for Film and Television
- BA (Hons) Prosthetics and Special Effects Design
- BA (Hons) Television Production

### STEM Pathway

- BA (Hons) Computer Games (Design)
- BSc (Hons) Computer Games Technology
- BSc (Hons) Computer Systems and Networks Engineering
- BSc (Hons) Computing
- BSc (Hons) Criminal Investigation with Psychology
- BSc (Hons) Criminology and Psychology
- BSc (Hons) Cyber Security Management
- BEng (Hons) Electronic Engineering
- BSc (Hons) Health, Nutrition and Exercise Science
- BEng (Hons) Mechanical Engineering
- BSc (Hons) Psychology
- BSc (Hons) Psychology with Counselling and Mental Health
- BSc (Hons) Psychology and Sociology
- BEng (Hons) Renewable Energy Engineering
- BSc (Hons) Software Engineering
- BSc (Hons) Sport and Exercise Psychology
- BSc (Hons) Sport and Exercise Science
- BEng (Hons) Yacht and Powercraft Design
- BEng (Hons) Yacht Design and Production

Find out more:  
[qa.solent.ac.uk/progression](https://qa.solent.ac.uk/progression)







# Money and support

---

As a pathway student, you'll have two main types of expenses - tuition fees and your living costs. Some courses also have additional or optional costs - for example, field visits or equipment - and you can find details of these on our online course pages.

## Finance

Cost is an important factor for most students and we fully appreciate what a big investment you are making in your future. We have a number of measures in place to help make your study more affordable.

View all our information on finances and payments here: [qa.solent.ac.uk/pathway-finance](https://qa.solent.ac.uk/pathway-finance)

## Scholarships and bursaries

Scholarships and bursaries are available for eligible students. You can find details of our financial support packages and eligibility here:

[qa.solent.ac.uk/scholarships](https://qa.solent.ac.uk/scholarships)

# Your application journey



## 1: Check your entry point

Check which entry point is most suitable for you and the minimum grades for your target course.

Find out more:

[qa.solent.ac.uk/pathway-entry](https://qa.solent.ac.uk/pathway-entry)



## 2: Talk to us

If you would like more information, please contact us and our advisers will be able to discuss the details of your academic history and recommend the best entry point for you.



## 3: Supporting documents

In order for you to make a successful application to Solent University, you are required to submit supporting materials. This will include; references, a copy of your passport, and current and previous UK visas.



## 4: Start your application

Once you have decided which course you want to apply for, click the 'Apply online' link on the course page on our website, to begin your online application.



## 5: Draft your statement

Draft your personal statement carefully so that it reflects your choice of course(s) and why you have chosen this/these course(s) at Solent.



## 6: Submit your application

Submit your application along with your supporting documents via our online admissions portal.





## Our campus







# SOLENT STORIES



My International Foundation Programme has helped me prepare for my undergraduate degree as it enabled me to understand the basics and what to expect. Studying the STEM pathway has introduced me to what code programming will look like.

**DESTINY SUNDAY AYO**  
International Foundation Programme  
– STEM Pathway



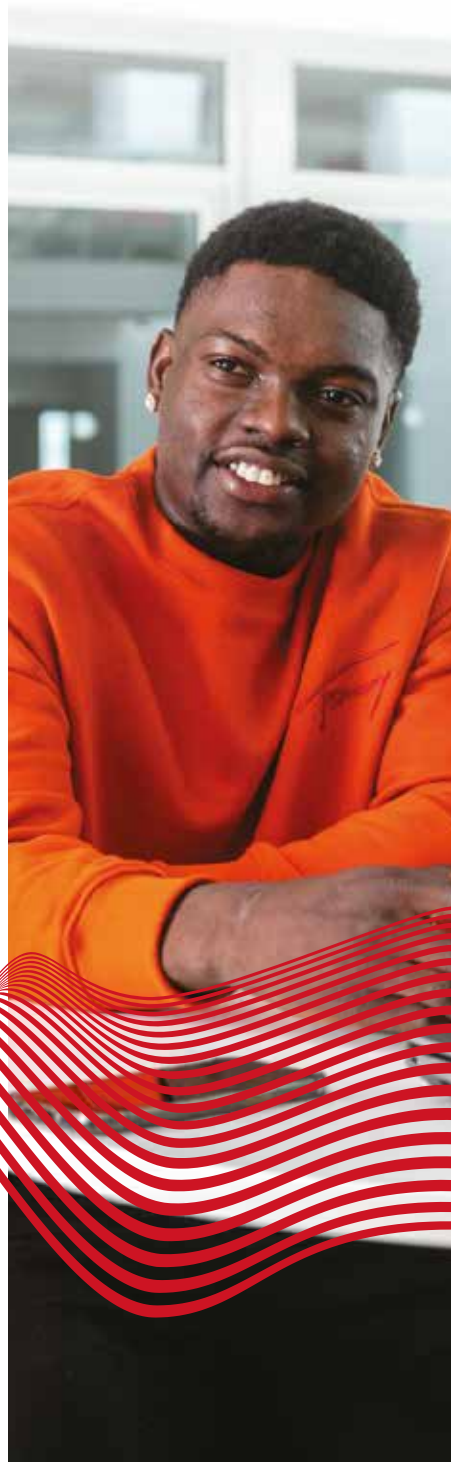




Whilst studying the International Foundation Programme, I have received great academic and welfare support. Specifically, the academic staff that have tutored me have been of immense help to me. I hope I can successfully apply what I have learned during my studies to solve real life problems.

**OGHENEKEVWE JEFFREY  
AKPOTAIRE**

**International Foundation  
Programme, Foundation Year**



I've learned a lot of things during my time here. The UK is very different to my home country, and the education system here is much clearer and more organised, the professors are more helpful, the streets are really clean and the people are accommodating. It is easy to adjust as I've met lots of students from my home country, so if I could give a potential student advice it would be to not be scared to make the leap.

**MALAK LABRINI**

**International Foundation  
Programme – Creative  
Industries Pathway**



## How to find us

### By road

Southampton is just 75 miles from London.

- From the north, London and the home counties: the M3, M27 and A34 provide fast, direct road links to the city.
- From the west: the M4/A34 and the A36 are the major routes from the West Country, Bristol and Wales.
- From the east: follow the A27/M27 and leave at Junction 8.

The University's postcode is SO14 0YN.

**Parking:** As a city-centre university, there is little parking on campus, but there are plenty of car parks close by.

A map can be found at

[www.southampton.gov.uk/roads-parking/parking](http://www.southampton.gov.uk/roads-parking/parking)

### By rail

The closest train station is Southampton Central. From London, take the regular train service from London Waterloo station.

### By coach

National Express provides regular services to Southampton.



For more information and downloadable maps (including our accessibility map), visit [www.solent.ac.uk/find-us](http://www.solent.ac.uk/find-us)





In partnership with



-  solentuniversity
-  @solentuni
-  solentuniversity
-  solentuni
-  Solent University
-  @solentuniofficial

**+44 (0)20 3475 0351**  
**[qa.solent.ac.uk/pathway](https://qa.solent.ac.uk/pathway)**

The pathway programmes in this prospectus are delivered by Solent Pathway Campus, a college of Solent University which is jointly owned by Solent University and QA Higher Education – a UK higher education provider. These programmes are validated by the University and taught by Solent Pathway Campus staff.

Solent University and QA Higher Education are committed to being equal opportunities education providers and will therefore make reasonable adjustments for disabled applicants and students. The information given in this publication is accurate at the time of going to print in January 2023 and the University and QA Higher Education will use all reasonable efforts to deliver the programmes as described.

The University and QA Higher Education reserve the right to withdraw or change the programmes or programme combinations included in this prospectus. These changes will only be made as a result of UK legal compliance, minimum student number requirements or for course validation reasons and applicants will be contacted by the University or QA Higher Education at the earliest opportunity in the instance of these changes occurring.

Please check the website for up-to-date information on our programmes.