



In partnership with



INTERNATIONAL PATHWAY PROGRAMMES

2024/25

qa.solent.ac.uk/pathway

**MAKE
WAVES**





Contents

Solent in the city	4
Cutting-edge campus	8
Why Solent	14
Living in Southampton	16
Our student residences	18
International Pathways	20
International Foundation Programme	22
Money and support	28
Application journey	30
Our campus	33
Solent stories	34

Solent in the city

We're a city-centre campus, which means that everything Southampton has to offer is right on your doorstep. If you're looking for arts, culture, sports or entertainment, then the south coast's biggest city delivers it all – and it's one of the south's most affordable places to live, too.

Solent is wrapped up in the city – its people, its events. We're an active part of Southampton's warm, welcoming and diverse local community: working with our city partners and neighbours to celebrate Pride, supporting the local marathon, helping put on film and music festivals, and much more.

And Southampton is a great place to launch your career. Whatever you're looking for, you'll find it here – and our close ties with businesses of all kinds, all across the city, help us deliver the essential professional experience you'll need to start your future with a bang.

But why wait until you graduate to get started? Our Solent Creatives agency connects our student freelancers with the businesses that need their skills, our health and fitness students deliver popular community coaching programmes, and Re:So – our award-winning retail outlet – is stocked and run by our talented students and their design and fashion creations.

With everything you need for student life and beyond, we can't wait to welcome you.





**Deanery
student residence**



**Chantry
student residence**



**Kimber
student residence**



**David Moxon
student residence**

East Park Terrace campus



Food

Southampton is jam-packed with seriously good food. Eat your way around the world with everything from tapas and dim sum to Mauritian street food, all at budget-friendly price points. And if it's drinks you are looking for, you're spoiled for choice with a huge range of coffee, cocktails and everything in between.



Shopping

The city is home to one of the biggest shopping centres in the country with over 100 big-name retailers. Explore beyond the bustling high street to find independent boutiques, vintage stores and retro markets where you can hunt for a bargain or find something special.



Music

Southampton loves music – and we've got something for everyone. You can head out to iconic indie venues or massive club nights, discover up-and-coming performers at local bars or catch the biggest names when they visit on tour. Whatever gets you moving, you'll find it here.



Sport

With Championship football and international cricket at the heart of the city, it's an exciting place for sports fans. And if you'd rather get active yourself, then our coastal location opens up a world of new activities, from sailing to windsurfing.



Culture

Soak up some culture in your downtime – watch the latest West End tours at the south coast's biggest theatre, enjoy exhibitions at the city's art galleries and museums, see new releases and art-house classics at our two cinemas, or even join Solent's own community arts programme.



Explore

Enjoy the freedom to explore, discover new places and meet new people. With Southampton's fast rail and road links to London and flights from Southampton Airport across Europe and beyond, your adventure starts here.



Nature

If you're a runner, walker or cyclist, or just feel happier when you're surrounded by nature, you'll be right at home in our garden city. Our campus is surrounded by Southampton's parks, and with the woodlands of Southampton Common and the New Forest National Park on our doorstep, you'll never be far from a breath of fresh air.



Campus

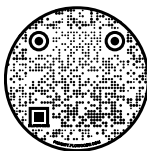
The campus is both compact and community-focused compared to other universities - designed around some lovely social spaces and cafés, it's the perfect place to chat, relax and make new friends, mixing with students from all different backgrounds and courses. So stick around between your lectures, grab a coffee and make friends for life.

Cutting-edge campus

Over the last few years we have made a £100 million investment in our campus, introducing state-of-the-art facilities to enhance your learning.

Virtual tour

Take a virtual tour of our facilities;
visit www.solent.ac.uk/virtual-tour





The Spark Building

Our award-winning teaching and learning building, the Spark, is a centrepiece of our campus – and everything about it is centred around you and your learning. Our lecture theatres include at-seat charging sockets for laptops and tablets, while the latest lecture-capture technology uploads to our virtual learning environment.

The Spark is a BREEAM 'excellent'-rated building for its sustainability credentials.



New virtual production stage

Training for the future of film and TV

Virtual production (VP) is the latest innovation in film and TV, made famous by Disney's hit Star Wars show The Mandalorian and since featured in blockbusters like The Batman. And our latest addition to the media facilities at Solent puts this cutting-edge technology straight into the hands of our students.



£43m invested in our maritime technology and campuses

Together with new high-tech campuses and a world leading model ship-handling centre, we continue to deliver high standards of professional port training and engineering education.



Fully equipped broadcast vehicle

Used by Solent students to broadcast live from events such as the Glastonbury Festival, and capture footage for international broadcasters such as the BBC.



Digital cinema

Our student-run cinema makes us one of just a handful of universities worldwide with Dolby Atmos encoding capabilities.



Sports complex

Featuring two sports halls, two fitness studios, a health and fitness gym, a strength and conditioning gym and high-quality training facilities.



A 60-metre hydrodynamic testing tank

Provides professional testing facilities for watercraft design. Students also have access to our temperature-controlled composite materials lab, 3D scanning and printing facilities, and a dedicated design suite.



Library with flexible opening hours

Our well-stocked library has long opening hours through the year and features a huge range of books, journals and other materials in both print and electronic format. There are over 800 study places, including group and individual study rooms and silent study areas.



Infinity cove photography studio

Our campus is also home to a specialist infinity cove – a photography studio specifically designed to give the impression that the background of an object extends to infinity.



Bespoke nursing lab

Built to a bespoke design following consultation with industry, our six-bed simulated nursing ward reflects acute patient care in a clinical environment, enabling student nurses to practise their skills without any risk to patients. State-of-the-art equipment includes a high-fidelity Nursing Anne simulator – capable of verbal noises, breathing, blinking, and palpate pulses.



£1m recording studios

Recently updated, the technology in our recording studios is of professional standard throughout. The primary studio features an industry-leading 24-fader, six-knob Avid S6 M40 control surface. All nine studios run on Pro Tools HD and Logic Pro X software, complemented by quality microphone pre-amps and hardware compressors, EQs and a suite of plug-ins from Sonnox, McDSP, Avid and Melodyne.



Biomedical science lab

Our biomedical science laboratory is purpose-built to support teaching and research in biomedical science and nutrition. The space includes two teaching laboratories, one tissue culture laboratory and one preparation and instrumentation room.



Performance space and HDTV studio

One of the biggest HD studios in the south of England. Plus two fully equipped HD TV studios, eight radio studios and ten audio recording studios; photography, animation and green-screen studios; and a professional-grade newsroom.



£1.3m sport science labs

Including purpose-built labs for biomechanics, nutrition and psychology, and a BASES-accredited physiology lab. You will have access to all the tools you need to monitor your subjects: data collection software, motion capture, eye-tracking, reaction timers, force transducers and more.

SOUTH COAST

I O T

Part of the South Coast Institute of Technology

Solent University is a leading member of the South Coast Institute of Technology (IoT), a partnership of education providers and industry-leading employers that are working together to develop opportunities for education and employment in the local maritime, engineering, and digital industries.

The South Coast IoT offers high-quality training, expert teachers, and state-of-the-art equipment and facilities, alongside real-world experience, to prepare you for a fantastic career. We work with well-known employers to deliver the courses the maritime, engineering and digital industries are looking for – industries which are hungry for new, talented engineers, technologists, technicians and creatives.

At Solent, IoT funding is supporting the creation of a new engineering centre of excellence.

Find out more, visit www.solent.ac.uk/IOT



Why Solent?

Practical, real-world learning

To get ahead, you'll need more than just the theory. Employers in every industry want experience, practicality and proactive, innovative thinking.

So at Solent, that's what you'll get.

At every stage, on every course, you'll have the opportunity to develop your professional and career skills – alongside practical real-world experience.

Informed by the industry

Our connections in the industry are right up to date, giving you access to guest lectures from experienced professionals – alongside plenty of opportunities to build your network, secure work experience and develop great professional habits.

Everything Solent offers has been designed to help you become exactly what employers are looking for – a highly skilled, highly motivated graduate who is ready to jump straight in.

Knowledge at your fingertips

Our modern library is home to a huge range of online and offline resources, plus award-winning service and support, and hundreds of bookable, wi-fi-enabled study spaces. Plus, our online learning environment puts learning materials, study guides and a personal eportfolio page at your fingertips.





Gold-standard teaching
In the latest Teaching Excellence Framework (TEF) review,
we achieved triple gold rating for our teaching.



Solent Business School, winner of the Outstanding
Higher Education Training Provider of the
Year at the CMI Awards 2022.



15th in the sector for graduate start-ups
(HESA 2023)



We've welcomed students of over 100 different
nationalities and have a network of 75,000
alumni around the world



Official university partner of Championship
football club, Southampton FC



One of the world's leading
maritime training academies

Living in Southampton

Our campus is right in the heart of this exciting city, giving you easy access to everything from food and drink to culture and sport.





Southampton is one of the UK's top 10 student cities, and the best in the southeast

(StudentCrowd, Best Student Cities UK 2023)

An affordable city

Despite being just over an hour away from London, Southampton is one of the most affordable cities in the region. From accommodation costs to going out, your money stretches further here than London, Bristol, Portsmouth and other cities. So you'll have more chances to get out and explore – whether that's food, shopping or sport.

Campus life

We're right in the heart of the city – a five minute walk through the park gives you convenient access to shops, restaurants, bars, and music and sport venues. Perfect for popping out with friends between sessions on campus, celebrating the end of a busy week, and enjoying everything Southampton has to offer.



Our student residences

Where you live while studying means more than just a roof over your head. It's a place of your own – to relax, study and spend time with your friends.



#SOLENTSTORIES

I lived in Kimber in my first year of university, which is in a lovely location. There was always someone to chat to in the common room or kitchen – we were all from different countries, so it was nice to find out about other cultures.

Giorgia Pizzimenti
BA (Hons) Fashion Journalism
student



David Moxon

117 rooms | En-suite
10 minute walk to campus



Chantry

208 rooms | En-suite and non-en-suite
15 minute walk to campus



Kimber

274 rooms | En-suite
10 minute walk to campus



Deanery

422 rooms | En-suite
15 minute walk to campus

What's included?

- Up to 100Mb WiFi access in each study-bedroom
- Personal contents insurance
- Social rooms with table tennis and pool tables
- All utility bills
- Cleaning of communal areas
- Residence support team available 24 hours a day
- Accessible rooms for students with disabilities



Virtual tour

Take a closer look at our modern student residences; visit solent.ac.uk/virtual-tour



Private housing

Do you want a bit more independence? Southampton offers many private housing options – for details, visit solent.ac.uk/accommodation or contact our dedicated housing adviser on accommodation@solent.ac.uk

International pathway programmes

If you're looking to study at Solent University and need to build on your existing qualifications to meet the entry requirements, our pathway programmes are designed to do just that.

Our pathway programmes are designed to fully support and help develop your English language proficiency and academic study skills. With this strong foundation, you'll have the opportunity to progress towards various undergraduate degrees in creative fields, engineering, art, computing, and business at Solent University.

Why study with us?



Get ready for UK academic study



Taught by lecturers and academics with experience supporting international students



Be part of a university campus from day one, with access to all of the university's facilities



Gradual introduction to living and studying in the UK

Visit us at qa.solent.ac.uk/pathway



#SOLENTSTORIES

My best experience so far is how welcoming the university is to international students. They threw a welcome party and the teaching techniques here are very understandable.

Tenu Evans

International Foundation Programme



International Foundation Programme

The International Foundation Programme is designed to help you improve your academic skills and English language levels, so you can advance to an undergraduate programme in a specific subject area.

Level	Foundation – NQF Level 3	
Duration	2 terms	3 terms
Start dates	October, January	October
Tuition fee	£12,500	£15,000
English language requirements	IELTS 5.0 (with no single element below 4.5). Students with IELTS 5.5 (with no single element below 5.5) can benefit from an integrated CAS to study this IFP, meaning you only make one visa application for the duration of your studies.	IELTS 4.5 (with no single element below 4.0)
Academic entry requirements	12 or 13 years of schooling dependent on the education system in country. Specific country entry requirements apply.	
Mode of study	Full-time: a range of teaching and learning activities	
Assessment methods	Coursework, in-class tests and portfolios	
Class hours per week	16-20 hours	
Minimum age	17 years old - you must turn 18 within the first 6 months of your undergraduate degree	

EXAMPLE MODULES		
Term 1, 2 and 3	Academic English	
	Academic Language in Context	
	Applied Academic Skills	
	Research Project	
Pathway specific modules	Business and Management Pathway	Business Environment
		Management Fundamentals
	Creative Industries Pathway*	Introduction to Creative Practice or, Introduction to Media*
		Creative Project
	STEM Pathway	Foundation Mathematics
		Problem Solving

All single modules are 20 credits unless otherwise stated
For a full list of module visit: qa.solent.ac.uk/pathway/courses

* Which module you study will depend on your progression undergraduate degree.



Business and Management Pathway

The Business and Management Pathway equips you with the essential skills to maximise your learning in a wide range of disciplines, from business and management, to marketing and accounting.

Investigating the business world through multiple lenses, you will develop an understanding of the environment in which businesses operate and the roles different functions play within a business. The pathway also introduces management theories practically, approaching business operations through the role of a manager.

Creative Industries Pathway

The Creative Industries Pathway introduces you to the key principles and skills in media, art and design. You will have the opportunity to develop your knowledge in an area of which you have a particular interest within the creative industries.

The course involves a creative project module which allows you to build upon your ideas, preparing you to progress on to a creative industries or media-related programme at undergraduate level.

STEM Pathway

The STEM Pathway will teach you the fundamentals of scientific and mathematical reasoning, developing your use of statistics to test hypotheses and validity of scientific data. Assessments are based on demonstrating the application of the theory in projects and portfolios that are typical at undergraduate level, leaving you well-placed for successful undergraduate studies in a range of fields including sustainability, biomedical science and design and manufacture.



International pathways progression options

On these pages, you can find the typical progression routes that feed into each undergraduate degree at Solent University.

Combined CAS options are available for your pathway programme and all of these undergraduate degrees, meaning you will have just one visa application that covers all of your studies at Solent.

Upon successfully completing your pathway programme you will be able to progress onto the following degrees:

Business and Management Pathway

- BSc (Hons) Accountancy and Finance
- BSc (Hons) Business Management
- BSc (Hons) Business Management with Digital Technologies
- BSc (Hons) Business Management with Finance
- BSc (Hons) Business Management with Marketing
- BSc (Hons) Construction Management
- BA (Hons) Fashion Management with Marketing
- BSc (Hons) Football Studies
- BSc (Hons) International Business Management
- BSc (Hons) Maritime Business
- BA (Hons) Music Business
- BSc (Hons) Shipping and Port Management
- BA (Hons) Sociology
- BSc (Hons) Sport Management

Creative Industries Pathway

- BA (Hons) Acting and Performance
- BA (Hons) Animation
- BA (Hons) Architectural Design and Technology
- BA (Hons) CGI and Visual Effects
- BA (Hons) Computer Games (Art)
- BA (Hons) Fashion
- BA (Hons) Fashion and Beauty Media
- BA (Hons) Fashion Photography
- BA (Hons) Fashion Styling and Creative Direction
- BA (Hons) Film and Television
- BA (Hons) Film Production
- BA (Hons) Fine Art
- BA (Hons) Graphic Design
- BA (Hons) Illustration
- BA (Hons) Interior Design
- BA (Hons) Interior Design Decoration
- BA (Hons) Make Up and Hair Design
- BA (Hons) Media Production
- BA (Hons) Photography
- BSc (Hons) Popular Music Production
- BA (Hons) Post Production for Film and Television
- BA (Hons) Prosthetics and Special Effects Design
- BA (Hons) Television Production

STEM Pathway

- BSc (Hons) Computer Games Programming and Design
- BSc (Hons) Computer Networks Engineering
- BSc (Hons) Computer Science
- BSc (Hons) Criminal Investigation with Psychology
- BSc (Hons) Criminology and Psychology
- BSc (Hons) Cyber Security
- BEng (Hons) Electronic Engineering
- BSc (Hons) Health, Nutrition and Exercise Science
- BEng (Hons) Mechanical Engineering
- BSc (Hons) Psychology
- BSc (Hons) Psychology with Counselling and Mental Health
- BSc (Hons) Psychology and Sociology
- BEng (Hons) Renewable Energy Engineering
- BSc (Hons) Software Engineering
- BSc (Hons) Sport and Exercise Psychology
- BSc (Hons) Sport and Exercise Science
- BEng (Hons) Yacht and Powercraft Design
- BEng (Hons) Yacht Design and Production


Find out more:

qa.solent.ac.uk/progression



Money and support





As a pathway student, you'll have two main types of expenses - tuition fees and your living costs. Some courses also have additional or optional costs - for example, field visits or equipment - and you can find details of these on our online course pages.

Finance

Cost is an important factor for most students and we fully appreciate what a big investment you are making in your future. We have a number of measures in place to help make your study more affordable.

View all our information on finances and payments here:

qa.solent.ac.uk/pathway-finance

Student budget calculator

Ease your student life with our free money management tool - understand your spending and make better financial decisions.

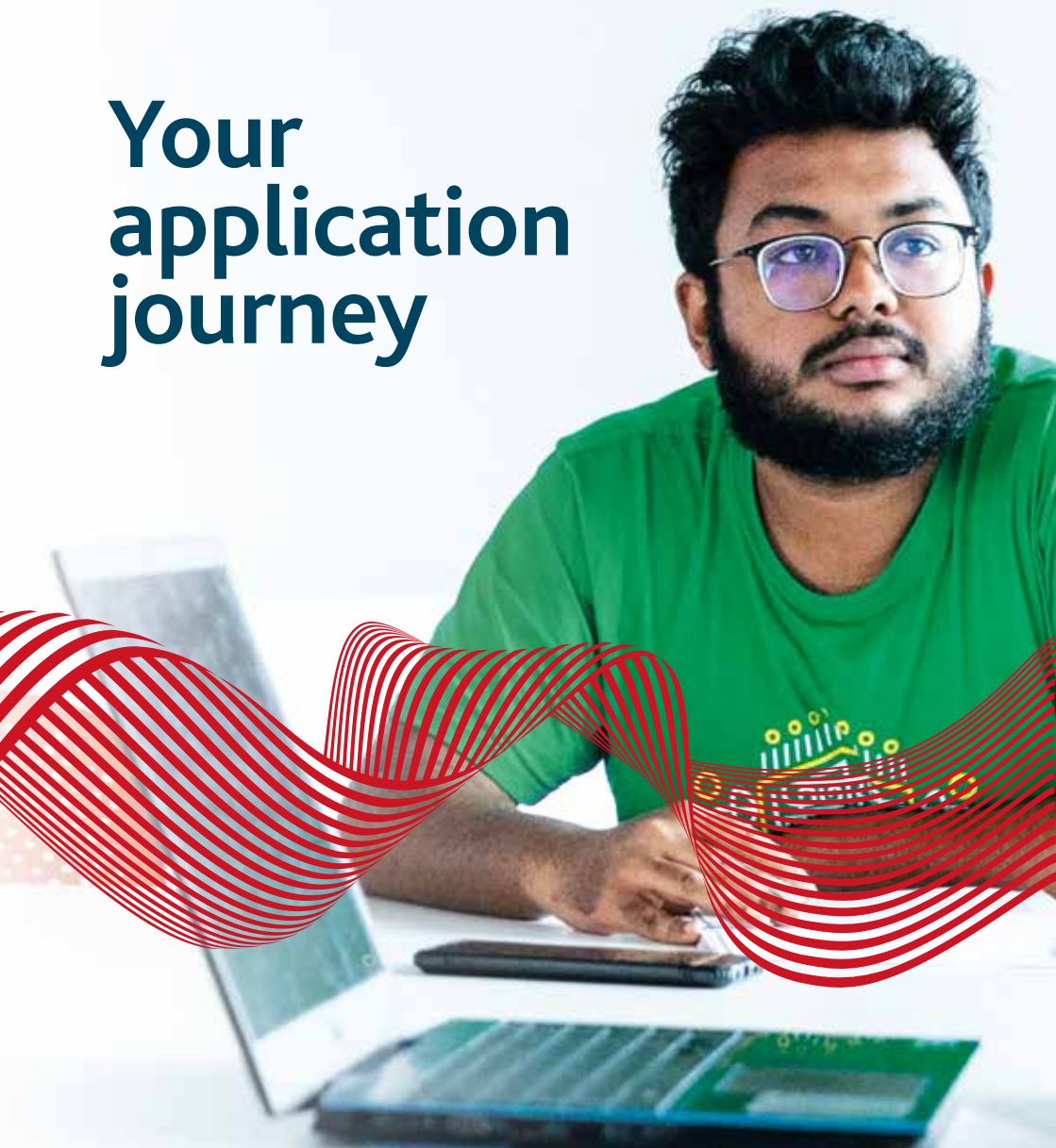
qa.solent.ac.uk/pathway/budget-calculator

Student Support

At Solent University, international students have access to specialised support services. This ensures your questions are promptly answered and help is always available.

qa.solent.ac.uk/pathway/student-support

Your application journey





1: Check your entry point

Check which entry point is most suitable for you and the minimum grades needed for your progression course.

Find out more:

qa.solent.ac.uk/pathway-entry



2: Talk to us

If you would like more information, please contact us and our advisers will be able to discuss the details of your academic history and recommend the best entry point for you.



3: Supporting documents

In order for you to make a successful application to Solent University, you are required to submit supporting materials. This will include references, a copy of your passport, and current and previous UK visas.



4: Start your application

Once you have decided which course you want to apply for, click the 'Apply online' link on the course page on our website to begin your online application.



5: Draft your statement

Draft your personal statement carefully, so it reflects your choice of studies and why you have chosen this/these course(s) at Solent.

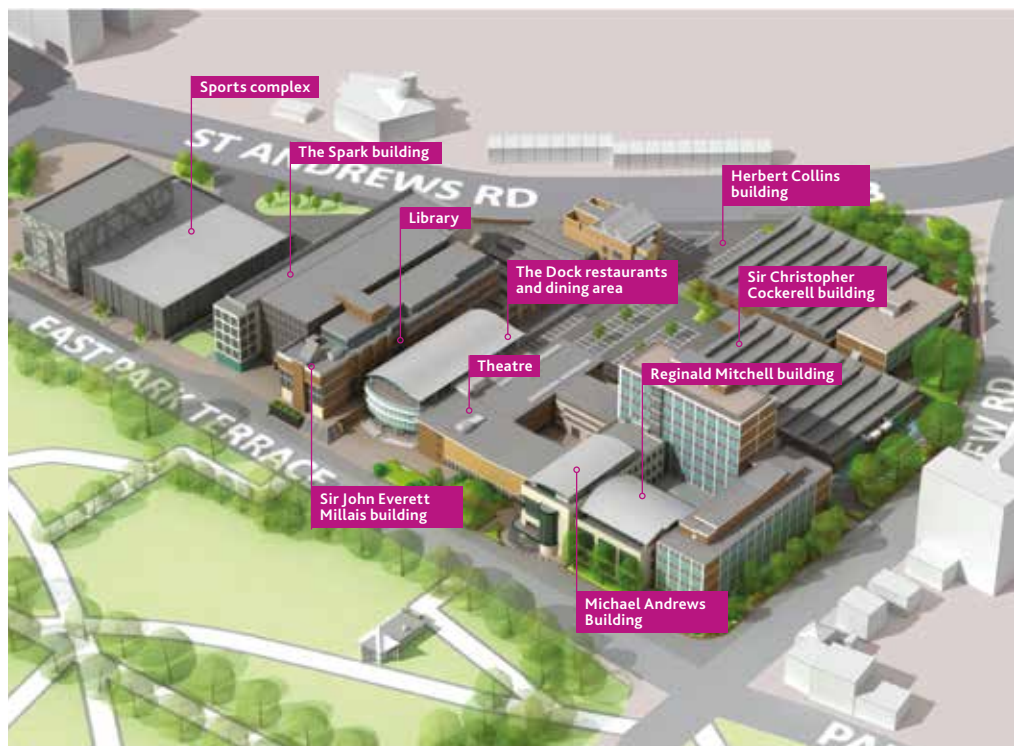


6: Submit your application

Submit your application along with your supporting documents via our online admissions portal.



Our campus







SOLENT STORIES



At first, I found it difficult, but later on throughout the programme, I learned valuable insights, providing me with a steady and clear path to help me in the coming years.

The community is very welcoming, and you'll always see friendly faces. Additionally, you get to meet people from different countries. Pathway staff, like Linda, have been incredibly supportive. If I mention something that concerns me via email, she'll come and find me as soon as possible! Furthermore, she follows up with me to ensure I'm doing better!*

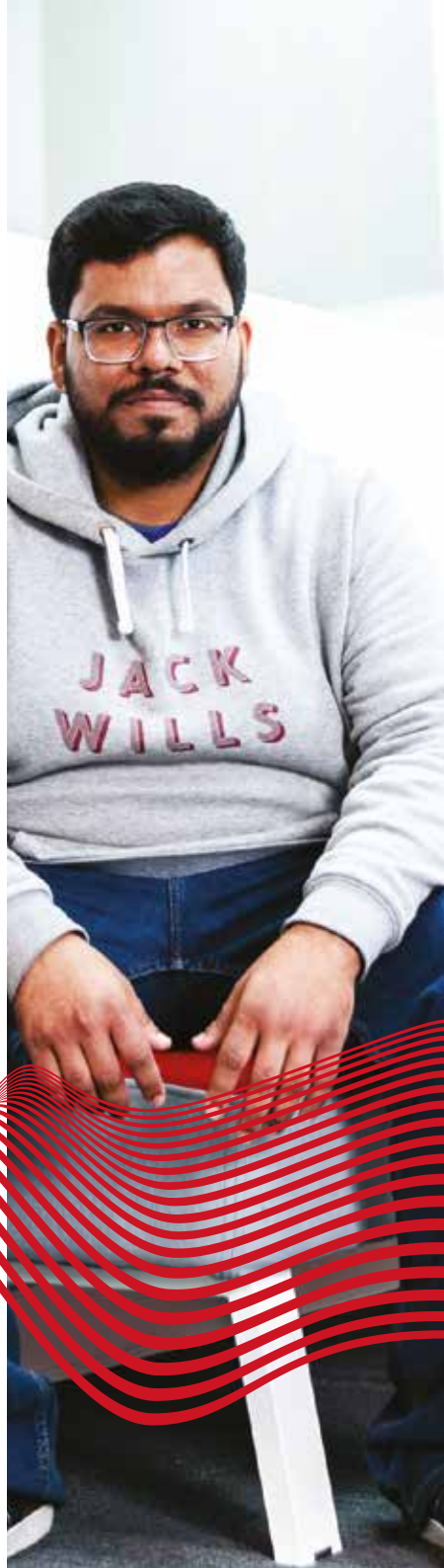
Jawahir Mohamed
Solent IFP





This course is great because you study the fundamentals that will truly give you an insight to the specific industry you'd like to work into. I also really enjoy the culture here in the UK, as everything is organised, and clean and the teachers here are so nice!*

Youssef Chaki
International Foundation
Programme - Business and
Management Pathway





I have gained invaluable knowledge and insights from my tutors during my studies, and they have been instrumental in guiding me on adapting to life in the UK. Their support extends beyond academic matters; whenever I faced challenges with my coursework or felt overwhelmed, they were there to lend a helping hand. Thanks to their continuous support, I have made significant progress, and my English skills have greatly improved.*

Malak Labrini
International Foundation
Programme – Creative
Industries Pathway



*Quotes not relative to imagery



How to find us

By road

Southampton is just 75 miles from London.

- From the north, London and the home counties: the M3, M27 and A34 provide fast, direct road links to the city.
- From the west: the M4/A34 and the A36 are the major routes from the West Country, Bristol and Wales.
- From the east: follow the A27/M27 and leave at Junction 8.

The University's postcode is SO14 0YN.

Parking: As a city-centre university, there is little parking on campus, but there are plenty of car parks close by.

A map can be found at

www.southampton.gov.uk/roads-parking/parking

By rail

The closest train station is Southampton Central. From London, take the regular train service from London Waterloo station.

By coach

National Express provides regular services to Southampton.



For more information and downloadable maps (including our accessibility map), visit www.solent.ac.uk/find-us





In partnership with



Gold-standard teaching and opportunities

Our focus on practical knowledge and employment opportunities is just one of the reasons we're rated triple gold in the latest Teaching Excellence Framework (TEF) review from the UK government Office for Students. TEF recognises excellence in teaching, learning and achieving positive outcomes for students - with gold status awarded only to universities offering outstanding student experience and career outcomes.



+44 (0)20 3475 0351
qa.solent.ac.uk/pathway

The pathway programmes in this prospectus are delivered by Solent Pathway Campus, a college of Solent University which is jointly owned by Solent University and QA Higher Education – a UK higher education provider. These programmes are validated by the University and taught by Solent Pathway Campus staff.

Solent University and QA Higher Education are committed to being equal opportunities education providers and will therefore make reasonable adjustments for disabled applicants and students. The information given in this publication is accurate at the time of going to print in January 2024 and the University and QA Higher Education will use all reasonable efforts to deliver the programmes as described.

The University and QA Higher Education reserve the right to withdraw or change the programmes or programme combinations included in this prospectus. These changes will only be made as a result of UK legal compliance, minimum student number requirements or for course validation reasons and applicants will be contacted by the University or QA Higher Education at the earliest opportunity in the instance of these changes occurring.

Please check the website for up-to-date information on our programmes.